

**Job Name: 25-3303 INDOT B44119-A ORX-Sect. 3 - Vanderburgh Co.**  
**Job Location: Evansville, IN**  
**Contractor: Blankenberger Brothers, Inc.**

PC: A. Chambers  
 TECH: J. Horsley  
 Plant: 100



Structure ID: 110 (4242+59)  
 Spec: INDOT  
 Type: INDOT MH H - TRANS.  
 Size: 60"

Rim: 387.98'  
 Invert: 375.69'  
 Rim to Invert: 12.29'

Sump: 0"  
 Floor (Top): 375.69'  
 Floor Height: 8"

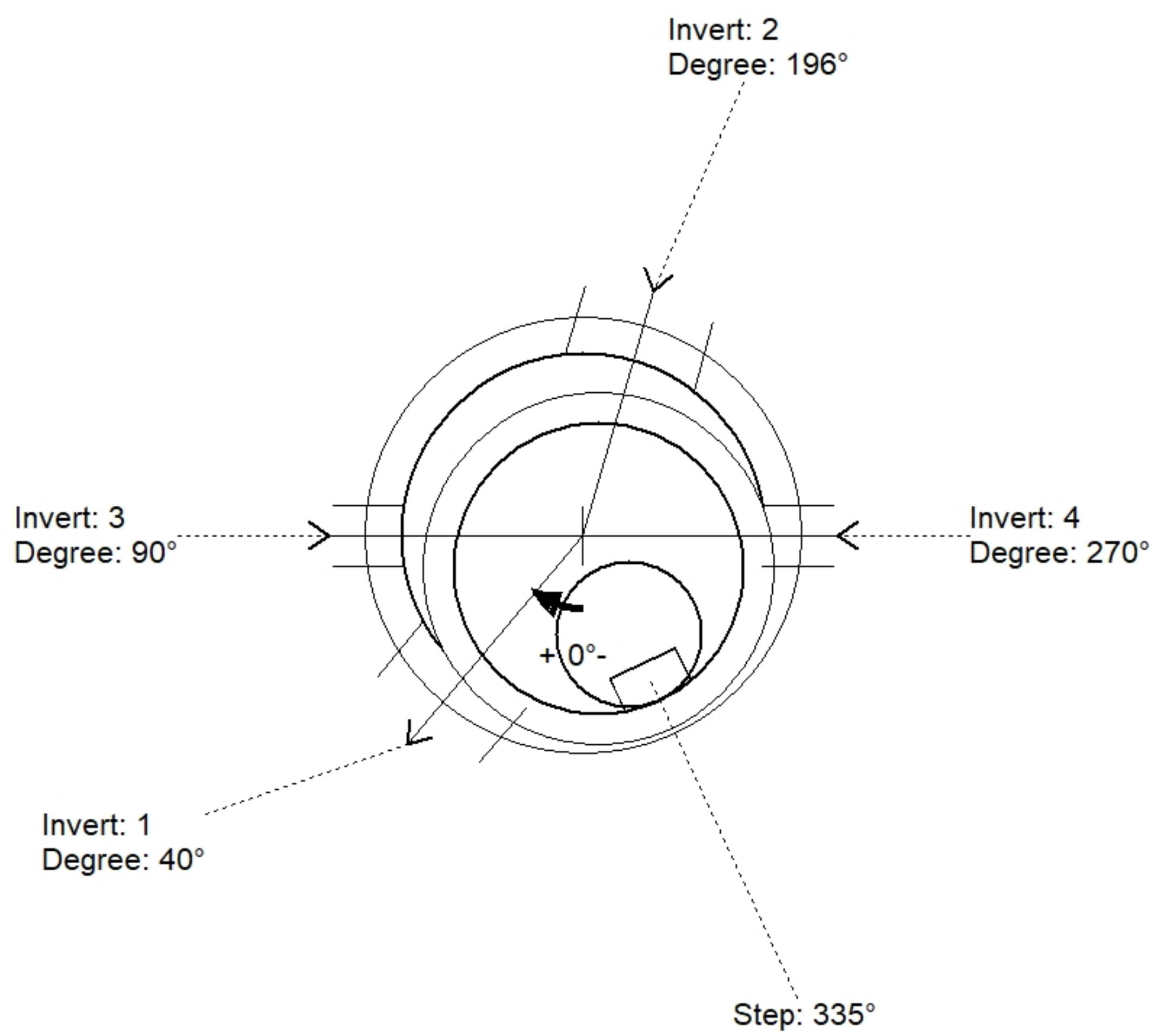
Floor (Bot): 375.023'  
 Overall Height: 12.833'  
 Slack: 1.48"

**Structure Notes:**  
**\*\*INDOT STATE PROJECT\*\***  
 1. INDOT MH TYPE C / ASTM C478 SPEC'S.  
 2. CONCRETE = 4,000 PSI AT 28 DAYS.  
 3. NO INVERT CHANNEL.  
 4. CASTING BY ICAST (INDOTY TY.4/ EJ 1925 F/C)

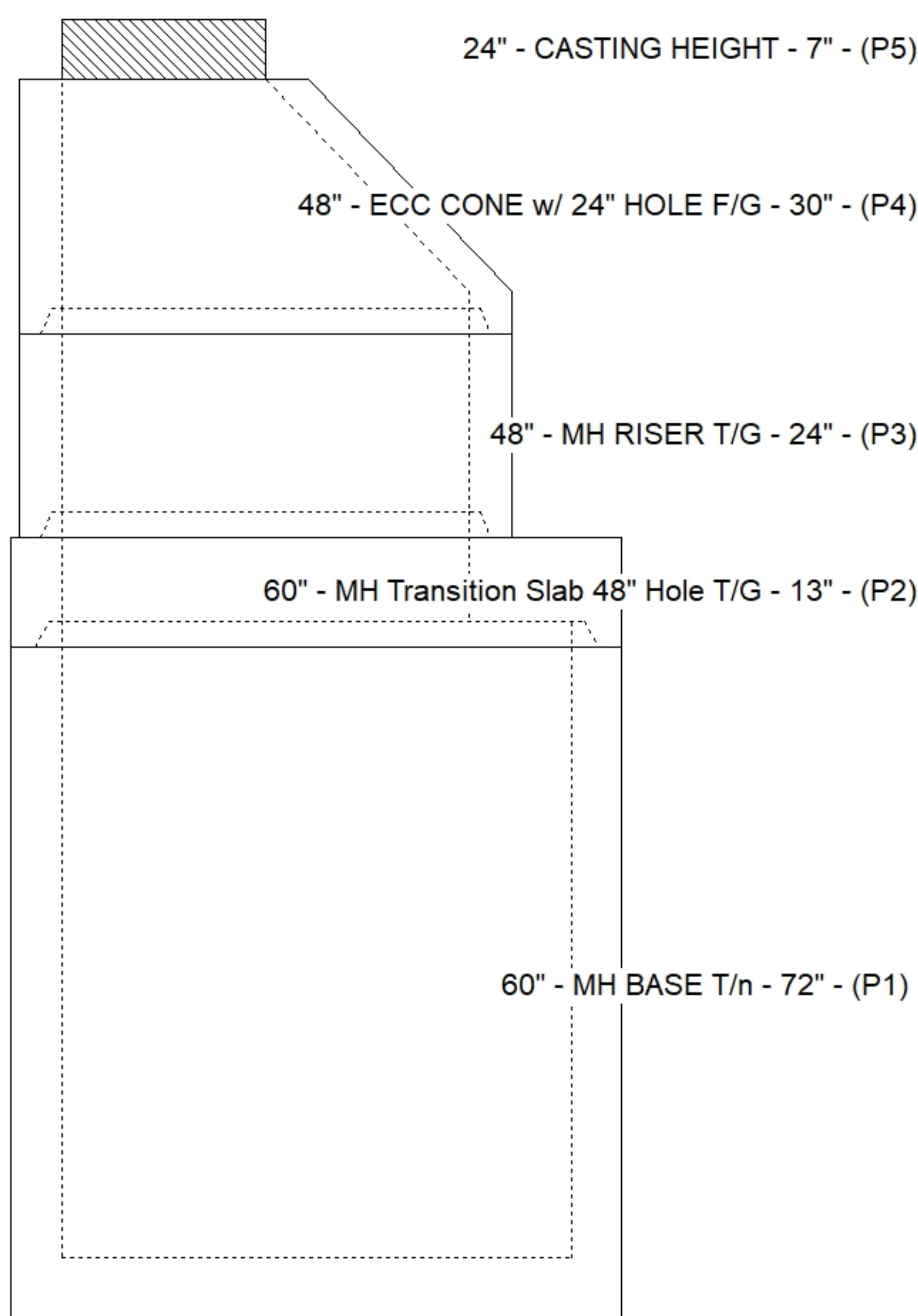
REINFORCING PER ASTM A615 (GRADE 60).  
 - CONE (As .12)  
 - RISER/WALLS (As .12)  
 - FLOOR (As .62) #5 BARS AT 6" C.C.E.W.

**STRUCTURE SUMMARY:**

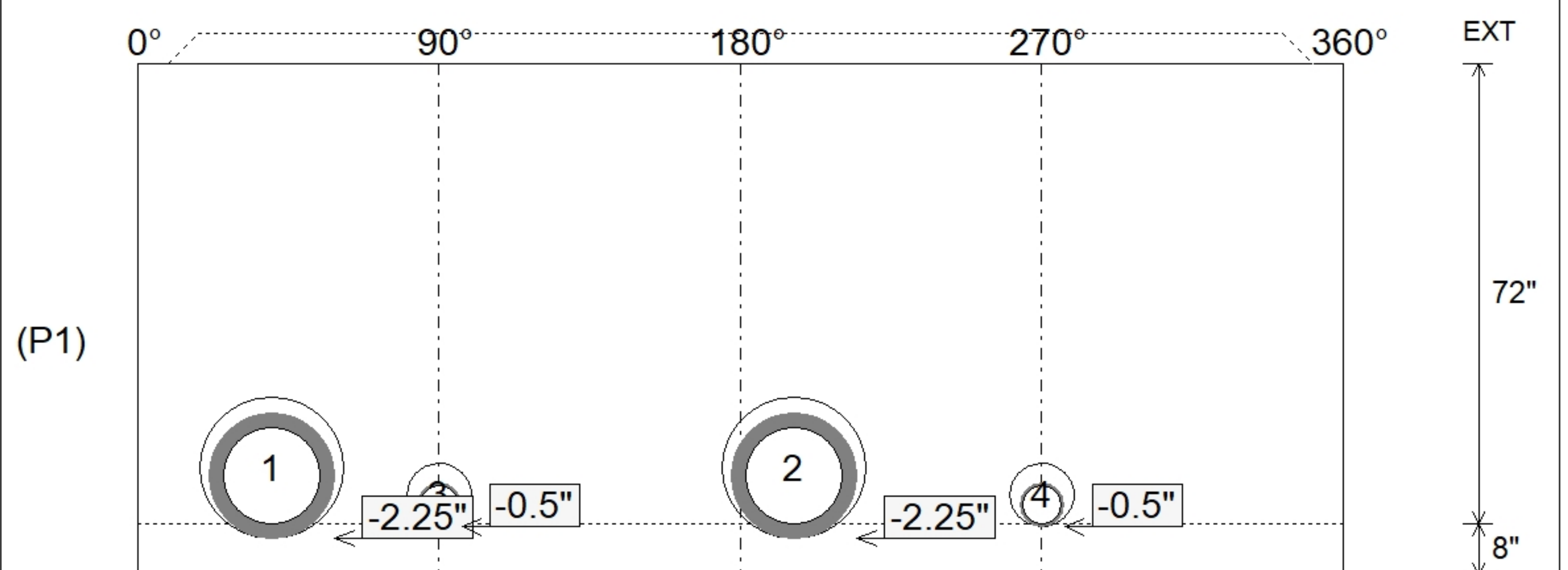
P5) 24" - CASTING HEIGHT - 7"	0 lb
P4) 48" - ECC CONE w/ 24" HOLE F/G - 30"	2050 lb
P3) 48" - MH RISER T/G - 24"	1677 lb
P2) 60" - MH Transition Slab 48" Hole T/G - 13"	1928 lb
P1) 60" - MH BASE T/n - 72"	9780 lb
1) CASTING - EJ 1925 F/C	250 lb
1) 60" - SGL 1"x14.5' Butyl (2x)	0 lb
2) 48" - SGL 1"x14.5' Butyl (2x)	0 lb
2) Hole - 22	0 lb
2) Hole - 10	0 lb
11) MH Step ML-10-TDS-NCR - 10"	0 lb
<b>Structure Total:</b>	<b>15684 lb</b>



Position	Elev	Angle	Pipe	Pipe OD	Hole	Connector	Up ( )	Ref
Rim	387.98'							
Reducer	381.69'							
Invert 1	375.69'	40°	15" RCP B WALL	19.5"	22"	Hole 22	-2.25"	P1
Invert 2	375.69'	196°	15" RCP B WALL	19.5"	22"	Hole 22	-2.25"	P1
Invert 3	375.69'	90°	6" HDPE (perf pipe)	6.9"	10"	Hole 10	-0.5"	P1
Invert 4	375.69'	270°	6" HDPE (perf pipe)	6.9"	10"	Hole 10	-0.5"	P1
Invert 5								
Invert 6								
Invert 7								
Invert 8								



**Cast (Int. Dim.) - Interior Dimensions**



Submittal Drawing  
 10/21/2025 7:33:29 PM

SUBMITTAL  
 APPROVED BY: