

Job Name: 25-3303 INDOT B44119-A ORX-Sect. 3 - Vanderburgh Co.
 Job Location: Evansville, IN
 Contractor: Blankenberger Brothers, Inc.

Plant: 100

10/21/2025 7:34:44 PM

Tech: J. Horsley

PC: A. Chambers



Structure ID: 106 (108+08)

P4 MH048LD12S

MH FLAT TOP w/30"x30" Hole F/G

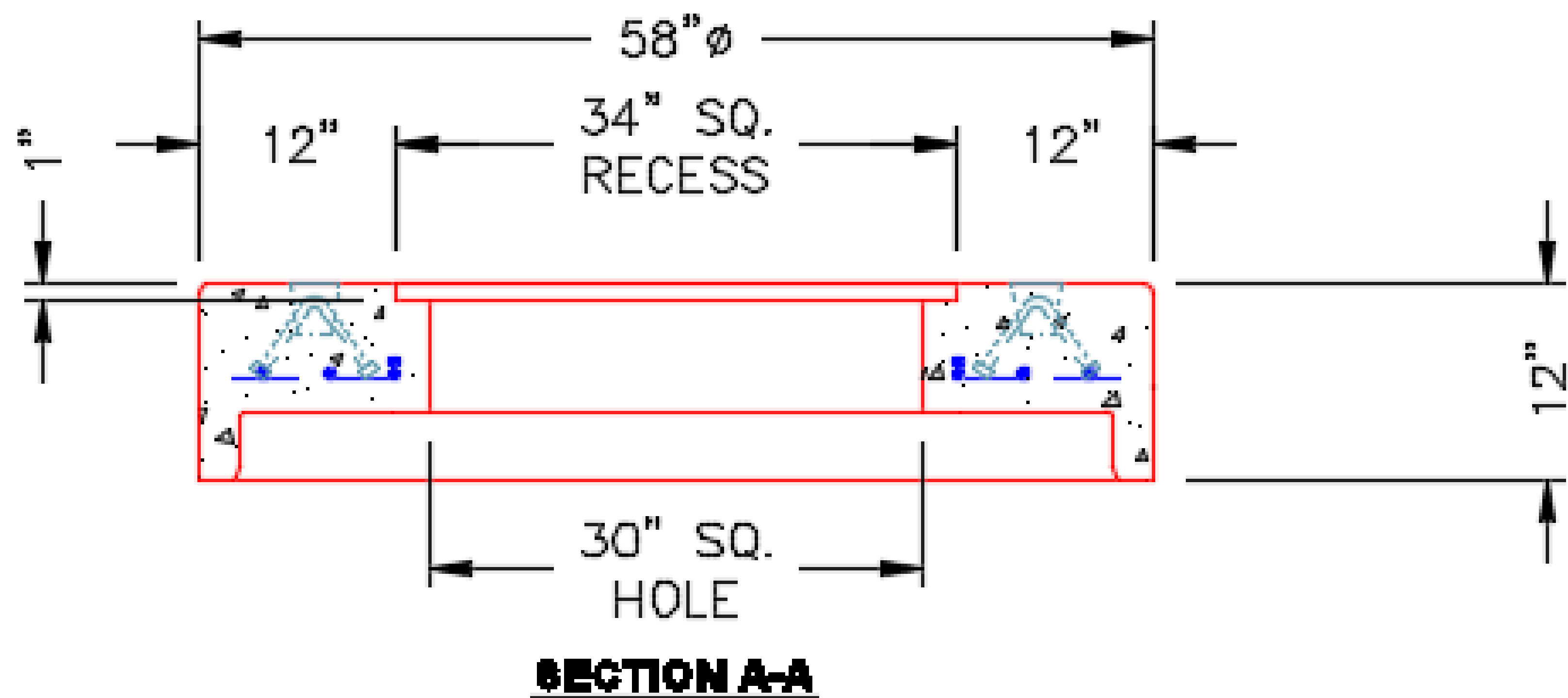
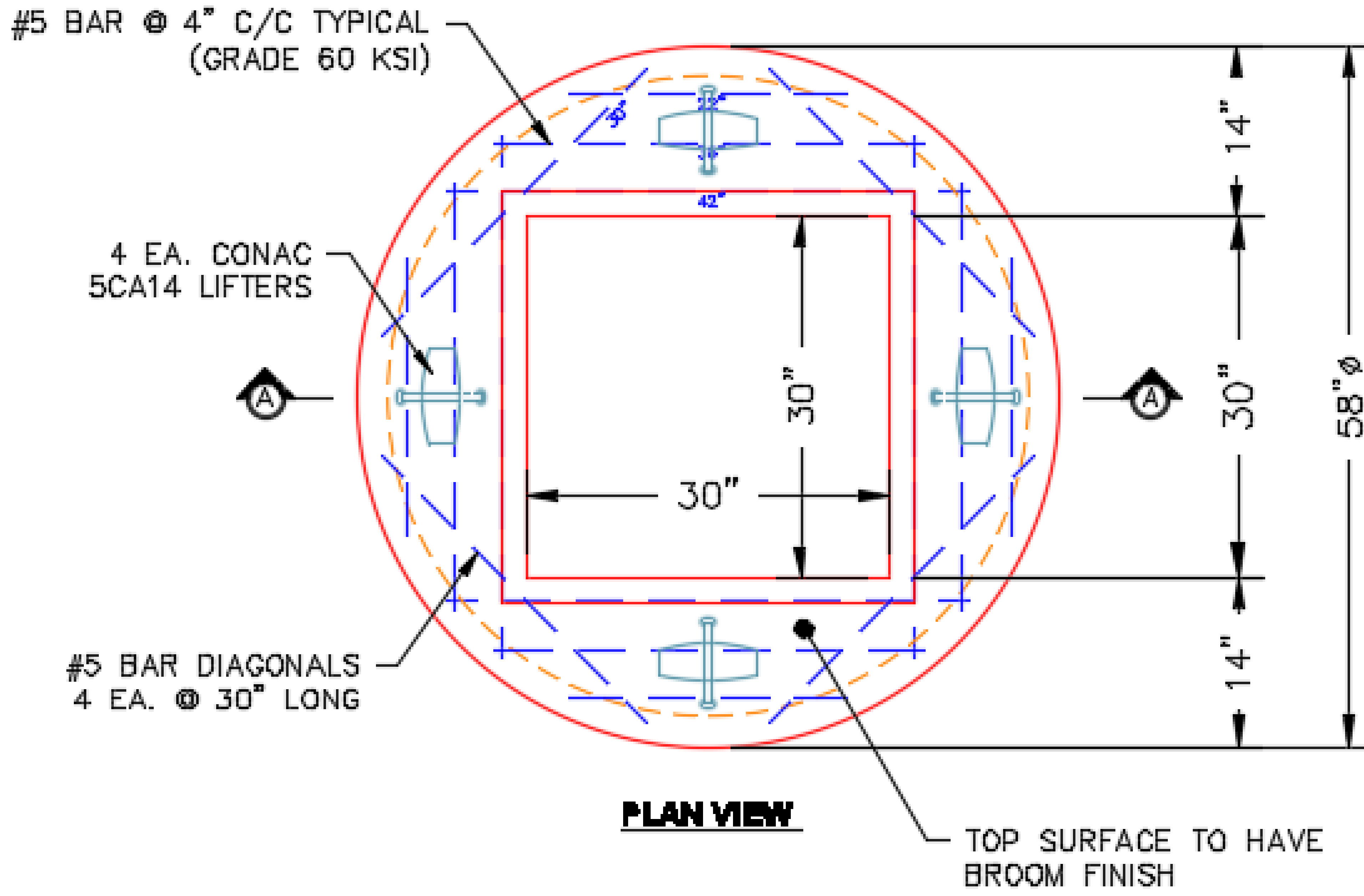
- P5) 34" x 34" - RECESS/GRATE SEAT - 1"
- P4) 48" - MH FLAT TOP w/30"x30" Hole F/G - 12"
- P3) 48" - MH RISER T/G - 24"
- P2) 60" - MH Transition Slab 48" Hole T/G - 13"
- P1) 60" - MH BASE Custom Ht T/n - 57"
- 1) CASTING - EJ 6610 GRT
- 1) 60" - SGL 1"x14.5' Butyl (2x)
- 2) 48" - SGL 1"x14.5' Butyl (2x)
- 1) Hole - 40
- 6) MH Step ML-10-TDS-NCR - 10"

0 lb
 1350 lb
 1677 lb
 1928 lb
 8002 lb
 250 lb
 0 lb
 0 lb
 0 lb
 0 lb

 Structure Total: 13206 lb

Structure Notes:
 INDOT STATE PROJECT
 1. INDOT MH TYPE C / ASTM C478 SPEC'S.
 2. CONCRETE = 4,000 PSI AT 28 DAYS.
 3. NO INVERT CHANNEL.
 4. CASTIN BY ICAST (INDOT TY.7 / EJ 6610 GRT).

 REINFORCING PER ASTM A615 (GRADE 60).
 - TOP SLAB = H2O LOADING
 - RISER/WALLS (As .18)
 - FLOOR (As .47) #5 BARS AT 8" C.C.E.W.



Coating (Int): Coating (Ext):	Seam Up: Flat Seam Dn: Groove	Wall Thickness: 5"	Height (Ext): 12"	Weight (Net): 1350 lb Volume (Net): 0.33cu.yd
----------------------------------	----------------------------------	--------------------	-------------------	--