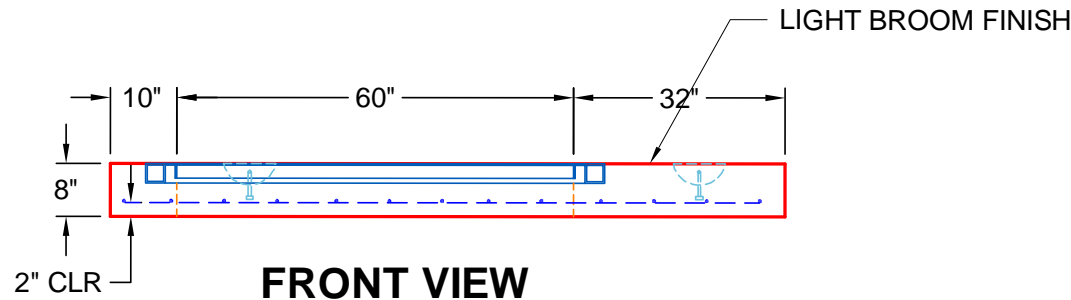


**TOP VIEW**

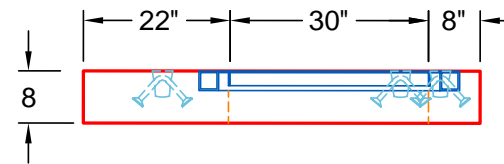
30"X60" HALLIDAY W1S3060 HATCH PROVIDED BY ICAST & CAST INTO TOP SLAB. (VERIFY LOCATION)

**GENERAL NOTES :**

1. CONCRETE 28 DAY COMPRESSIVE STRENGTH OF 5000 PSI.
2. REINFORCING PER ASTM A-615.  
TOP SLAB: #5 BAR @ 8"C.C.E.W.
3. VAULT JOINT TO BE SEALED WITH CONCRETE SEALANTS, INC. CS-102 ROLL BUTYL MASTIC
4. WEIGHT: TOP SLAB = 2,900 LBS
5. HALLIDAY 30"X60" HATCH & AL LADDER PROVIDED BY ICAST



**FRONT VIEW**



**SIDE VIEW**

REVISION INFORMATION

REV.  DATE:	NO REVISIONS TO DATE



PRODUCTION DRAWING: 4'X7.5'x5' DOGHOUSE RISER		
CUSTOMER: WARREN COUNTY WATER DISTRICT		
PROJECT: SOUTHERN TIRE MART VAULTS		
STRUCTURE: ICAST LI3		
QUOTE/SALES ORDER NO: 25-3294		
CHK BY: B SMITH	DRAWN BY: C. RUSS	
DATE: 09/5/25	SCALE: NTS	PG. 1 of 1