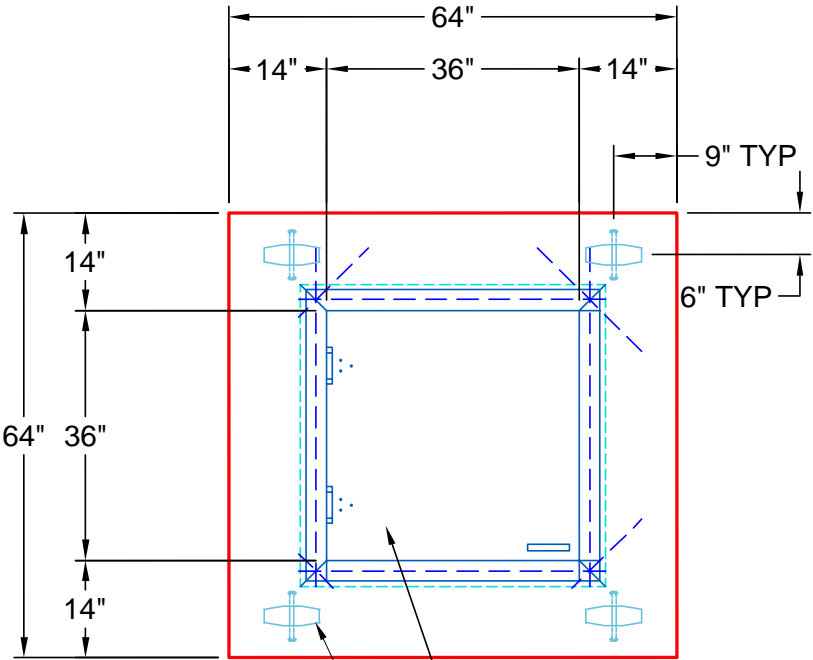


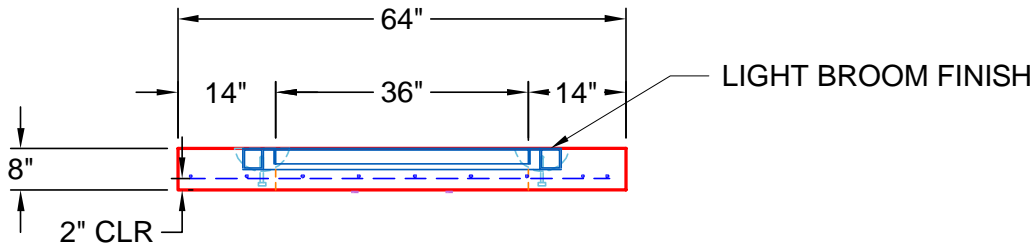
GENERAL NOTES

1. CONCRETE 28 DAY COMPRESSIVE STRENGTH OF 5000 PSI.
2. REINFORCING PER ASTM A-615.
TOP SLAB: #5 BAR @ 3"C.C.E.W.
3. VAULT JOINT TO BE SEALED WITH CONCRETE SEALANTS, INC. CS-102 ROLL BUTYL MASTIC
4. WEIGHT: TOP SLAB = 1,880 LBS
5. HALLIDAY 36"X36" HATCH & AL LADDER PROVIDED BY ICAST



4 EA.- 5CA14 A-ANCHORS

36"X36" HALLIDAY HATCH PROVIDED BY ICAST (CAST IN CENTERED)



REVISION INFORMATION

REV. Δ DATE:	NO REVISIONS TO DATE



PRODUCTION DRAWING: 48"X48"x8" FLAT LID		
CUSTOMER: WARREN COUNTY WATER DISTRICT		
PROJECT: SOUTHERN TIRE MART VAULTS		
STRUCTURE: ICAST LI2		
QUOTE/SALES ORDER NO: 25-3294		
CHK BY: B SMITH	DRAWN BY: C. RUSS	
DATE: 09/5/25	SCALE: NTS	PG. 1 of 1