

Job Name: 25-3292 Arbor View Sec. 2
Job Location: Eminence, KY
Contractor: Core & Main LP (Lou)

PC: J.Jarvis
 TECH: C.Russ
 Plant: Beaver Dam



Structure ID: **MH-A4**

Spec: Storm
 Type: STM.MH (Recessed pipe)
 Size: 48"

Rim: 890.72'
 Invert: 886.25'
 Rim to Invert: 4.47'

Sump: 0"
 Floor (Top): 886.25'
 Floor Height: 6"

Floor (Bot): 885.75'
 Overall Height: 4.917'
 Slack: 0.64"

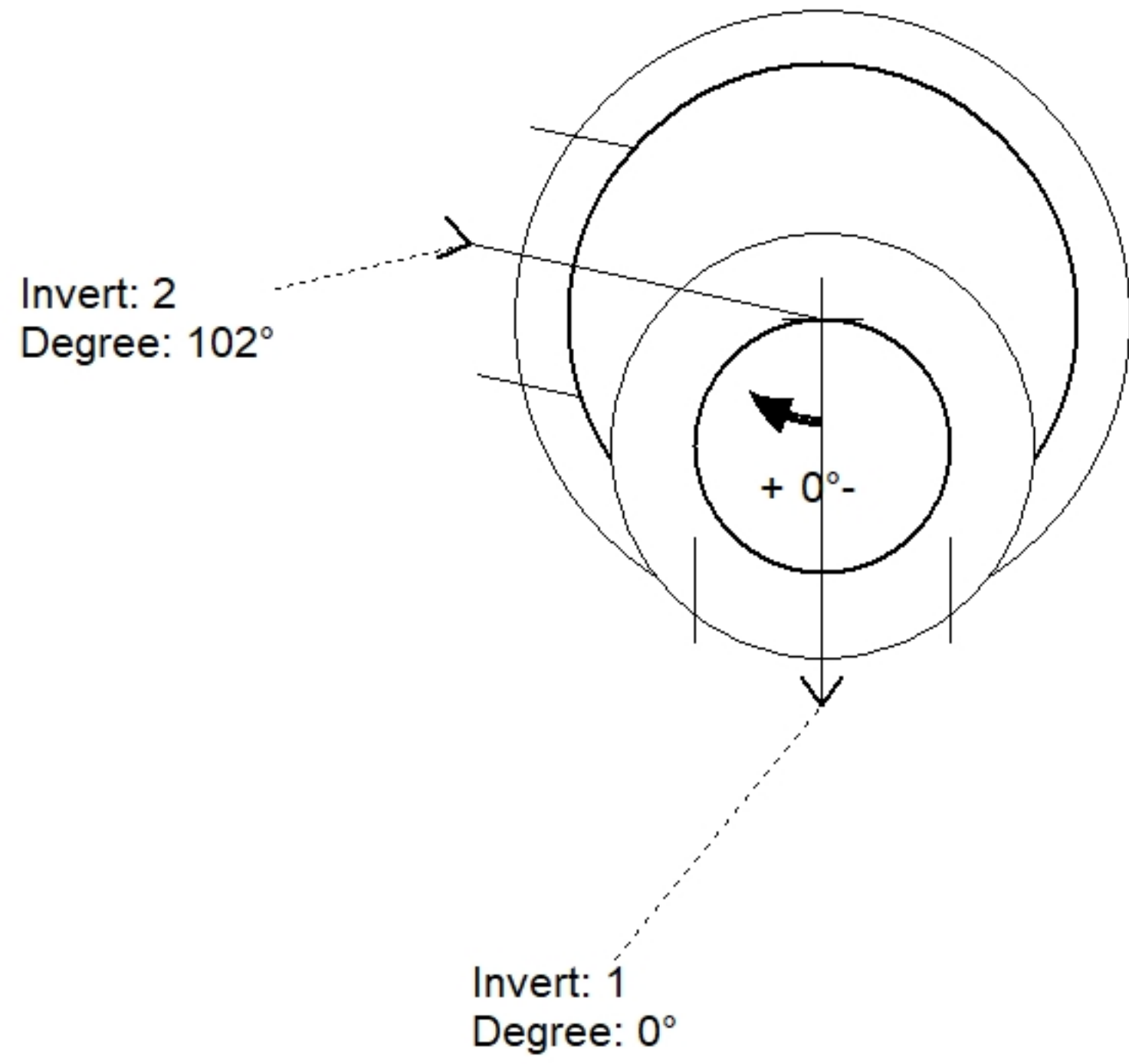
Structure Notes:

1. PER ASTM C478 SPECIFICATIONS.
2. CONCRETE = 4,000 PSI AT 28 DAYS.
3. HOE MC-315 "STORM" BY ICAST
4. REINFORCING PER ASTM A615 (GRADE 60).
 - TOP SLAB (As .62) #5 BARS AT 6" C.C.E.W..
 - RISER/WALLS (As .12)
 - FLOOR (As .31) #5 BARS AT 12" C.C.E.W.

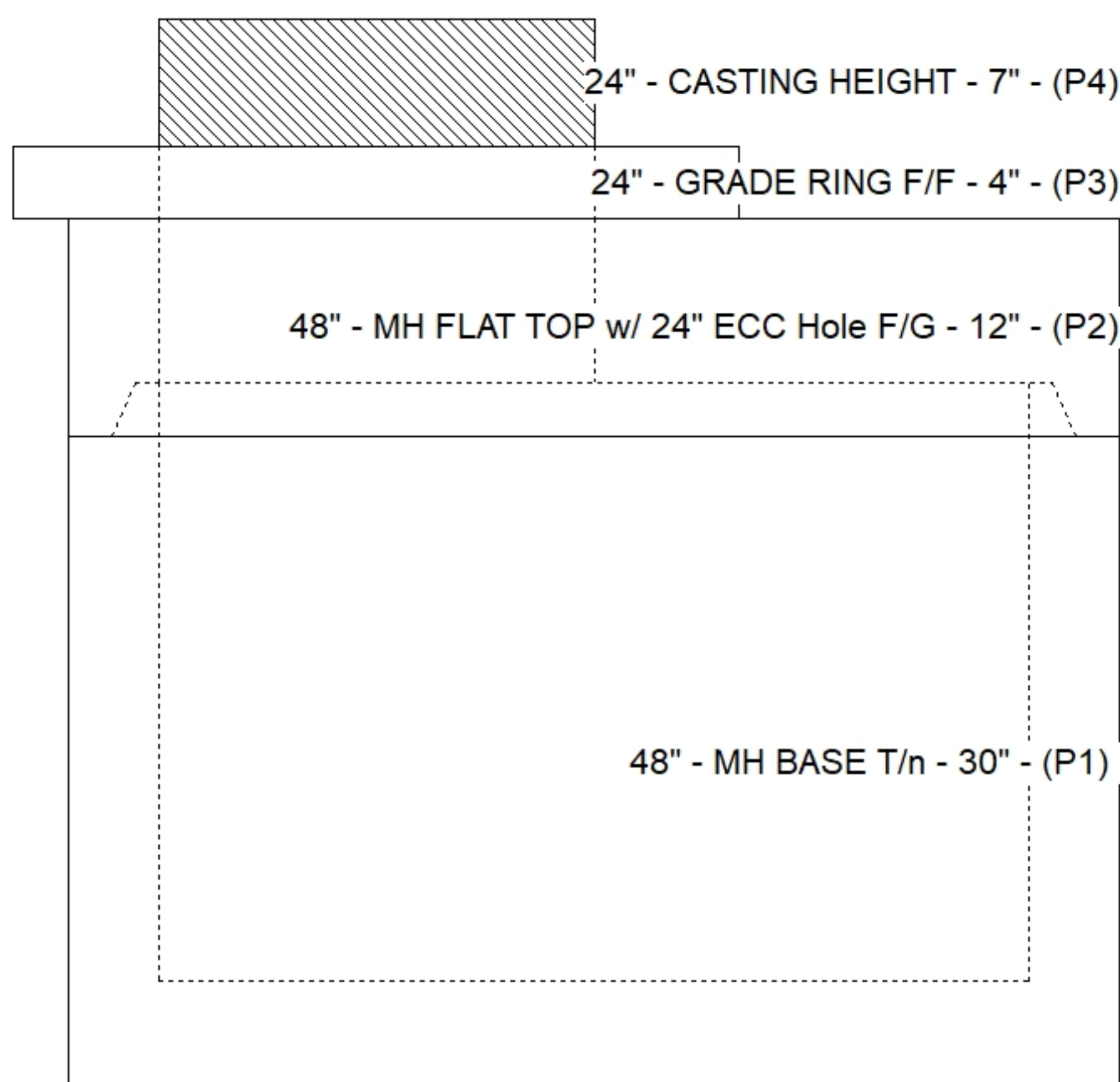
STRUCTURE SUMMARY:

P4) 24" - CASTING HEIGHT - 7"	0 lb
P3) 24" - GRADE RING F/F - 4"	270 lb
P2) 48" - MH FLAT TOP w/ 24" ECC Hole F/G - 12"	1561 lb
P1) 48" - MH BASE T/n - 30"	3032 lb
1) CASTING - HOE MC-315 F/C Storm	258 lb
1) 48" - SGL 1"x14.5' Butyl (2x)	0 lb
2) Hole - 24	0 lb

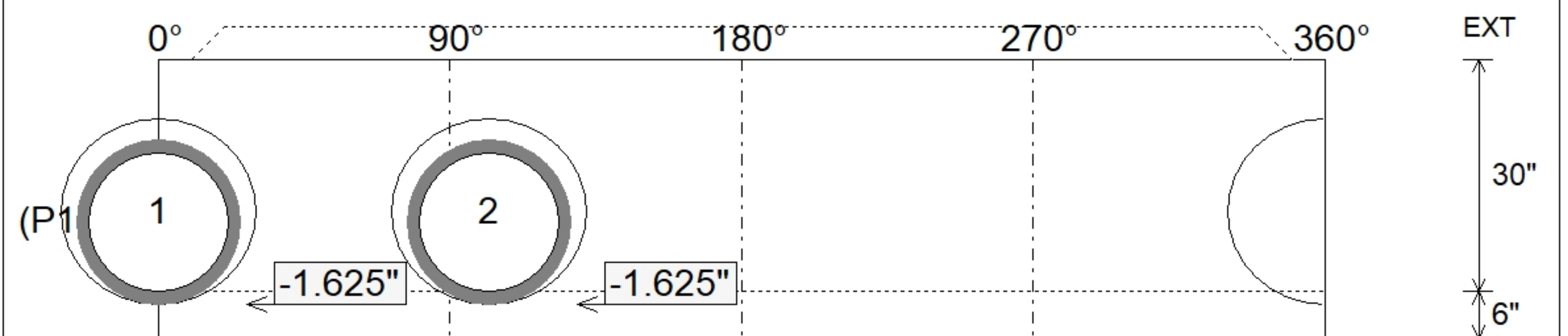
Structure Total:	5120 lb



Position	Elev	Angle	Pipe	Pipe OD	Hole	Connector	Up (L)	Ref
Rim	890.72'							
Reducer								
Invert 1	886.25'	0°	18" HDPE	21.2"	24"	Hole 24	-1.625"	P1
Invert 2	886.25'	102°	18" HDPE	21.2"	24"	Hole 24	-1.625"	P1
Invert 3								
Invert 4								
Invert 5								
Invert 6								
Invert 7								
Invert 8								



Cast (Int. Dim.) - Interior Dimensions



Submittal Drawing
 10/21/2025 9:20:59 AM

SUBMITTAL
 APPROVED BY: