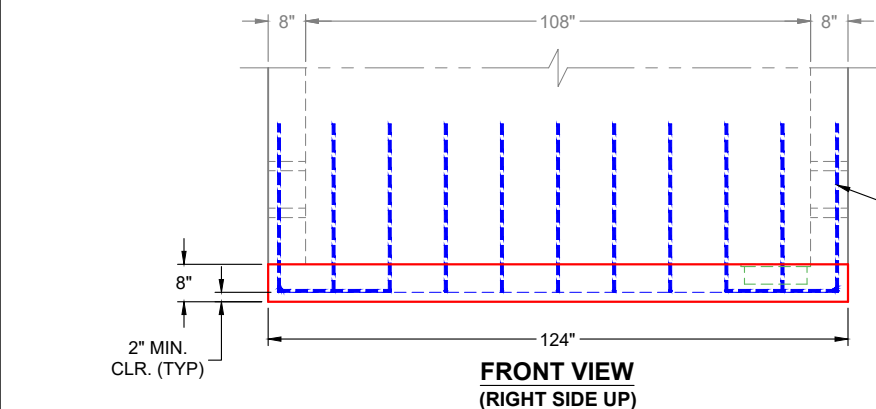
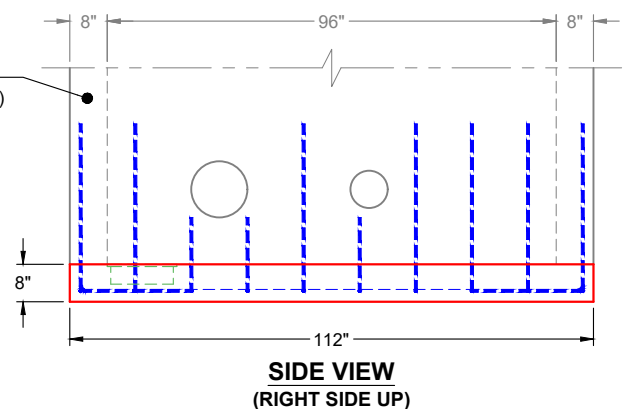


**PLAN VIEW
(RIGHT SIDE UP)**



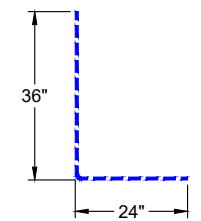
**FRONT VIEW
(RIGHT SIDE UP)**



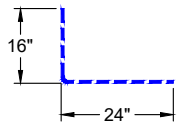
**SIDE VIEW
(RIGHT SIDE UP)**

GENERAL NOTES:

1. PER TO ASTM C-913 (LATEST REVISION) SPECIFICATIONS
2. CONCRETE: 5,000 PSI AT 28 DAYS
3. REINFORCEMENT: #5 BAR @ 12" C.C. E.W. (GRADE 60) - 2" MIN. REBAR CLEARANCE (TYP)
4. TOTAL WEIGHT: 30,370 LBS
 - FIRST POUR (FLOOR): 9,323 LBS
 - SECOND POUR (WALLS): 21,047 LBS
5. PRODUCTION TO WET STICK #5 L-BARS SPACED @ 12" C.C. (GRADE 60) OUT OF FLOOR FOR WALL POUR TIE-IN (SEE L-BAR DETAILS)
6. SEE PAGE 2 OF 2 FOR WALL POUR (SECOND POUR)



**L-BAR "A" (TYP)
32 EA. REQUIRED**




**L-BAR "B"
6 EA. REQUIRED**

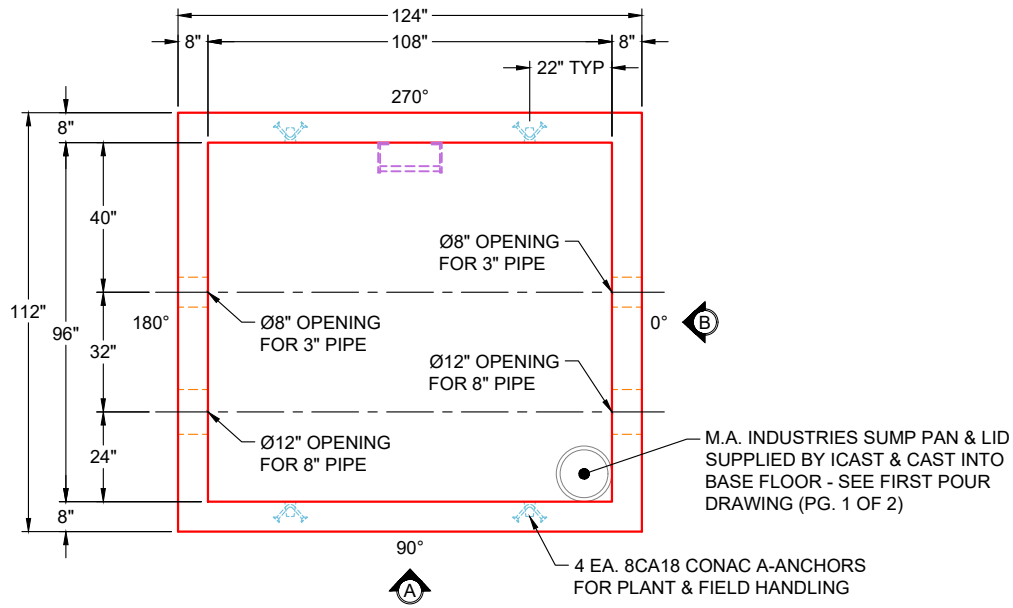
M.A. INDUSTRIES SUMP PAN & LID SUPPLIED BY ICAST - TO BE CAST INTO BASE FLOOR

WALL POUR - SEE SECOND POUR DRAWING (PG. 2 OF 2)

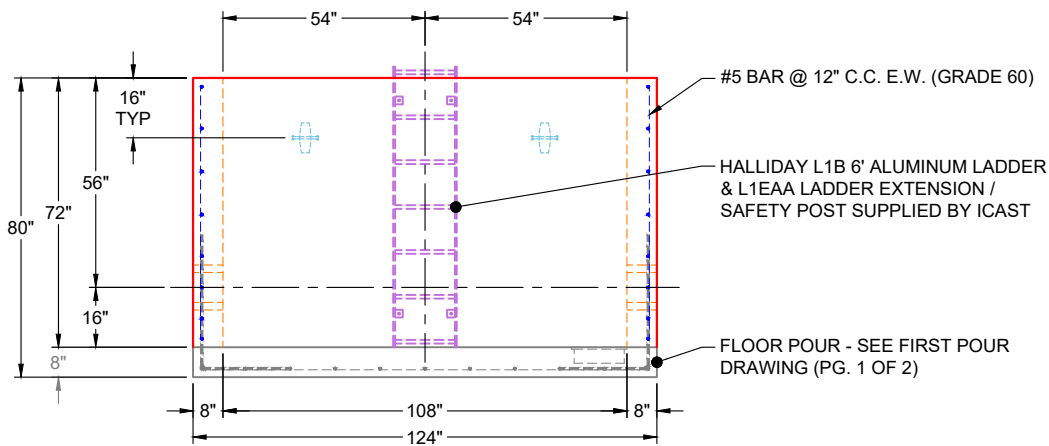
WET STICK #5 L-BARS SPACED @ 12" C.C. (GRADE 60) FOR WALL POUR TIE-IN (SEE L-BAR DETAILS)

PRODUCTION WORK ORDER		PRODUCT I.D.: BX96108-08BAVF	DESCRIPTION: 112" X 124" X 8" THICK VAULT BASE FLOOR (FIRST POUR)	
	QUALITY CONTROL CHECKLIST <input type="checkbox"/> ALL DIMENSIONS CORRECT. <input type="checkbox"/> LIFTERS INSTALLED. <input type="checkbox"/> CORRECT THICKNESS. <input type="checkbox"/> REINFORCING CORRECT. <input type="checkbox"/> #4 L-BAR STUBS CORRECT. <input type="checkbox"/> BASE MAT CORRECT. <input type="checkbox"/> PRODUCT SQUARE.	PRODUCT VIEW: RIGHT SIDE UP	CUSTOMER: ENDESOL, INC.	
		PLANT: BEAVER DAM, KY	PROJECT: KROGER L-756 FIRE DEPARTMENT VAULT	
		WEIGHT: 9,323 LBS (30,370 LBS TOTAL)	STRUCTURE: VAULT	
		TOP SECTION JOINT: N / A	ORDER NO: 25-3281	
		BASE SECTION JOINT: N / A	PE: J.H. ROSS	DRAWING: K. CARDWELL
QC CHECK INITIALS:	DATE: 01/15/26	SCALE: NTS	PG. 1 OF 2	

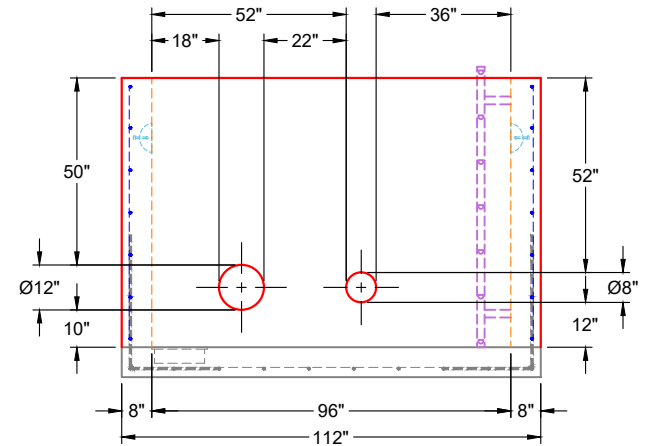
THIS DRAWING IS THE PROPERTY OF INFRASTRUCTURE PRECAST, INC. ANY USE OR DUPLICATION OF THIS DRAWING WITHOUT PRIOR AUTHORIZATION IS STRICTLY PROHIBITED.



**PLAN VIEW
(RIGHT SIDE UP)**



**VIEW A
(RIGHT SIDE UP)**



**VIEW B
(RIGHT SIDE UP)**

GENERAL NOTES:

1. PER TO ASTM C-913 (LATEST REVISION) SPECIFICATIONS
2. CONCRETE: 5,000 PSI AT 28 DAYS
3. REINFORCEMENT: #5 BAR @ 12" C.C. E.W. (GRADE 60) - 2" MIN. REBAR CLEARANCE (TYP)
4. TOTAL WEIGHT: 30,370 LBS
 - FIRST POUR (FLOOR): 9,323 LBS
 - SECOND POUR (WALLS): 21,047 LBS
5. SEE PAGE 2 OF 2 FOR FLOOR POUR (FIRST POUR)
6. HALLIDAY L1B 6' TALL ALUMINUM LADDER & L1EAA LADDER EXTENSION / SAFETY POST SUPPLIED BY ICAST

PRODUCTION WORK ORDER

PRODUCT I.D.: BX96108-08BAVF

DESCRIPTION: 96" X 108" X 72" VAULT BASE WALLS (SECOND POUR)



QUALITY CONTROL CHECKLIST

- ALL DIMENSIONS CORRECT.
- LIFTERS INSTALLED.
- HOLE LOCATION(S) CORRECT.
- REINFORCING CORRECT.
- SURFACE QUALITY ACCEPTABLE.
- EDGES CHAMFERED.
- ALL PATCHWORK ACCEPTABLE.

PRODUCT VIEW: RIGHT SIDE UP

CUSTOMER: ENDESOL, INC.

PLANT: BEAVER DAM, KY

PROJECT: KROGER L-756 FIRE DEPARTMENT VAULT

WEIGHT: 21,047 LBS (30,370 LBS TOTAL)

STRUCTURE: VAULT

TOP SECTION JOINT: N / A

ORDER NO: 25-3281

BASE SECTION JOINT: FLAT

PE: J.H. ROSS

DRAWING: K. CARDWELL

QC CHECK INITIALS:

DATE: 01/15/26

SCALE: NTS

PG. 2 OF 2

Job Number:

25-3281

Job Name:

Kroger L-756 Fire Department Vault

Structure:

Vault

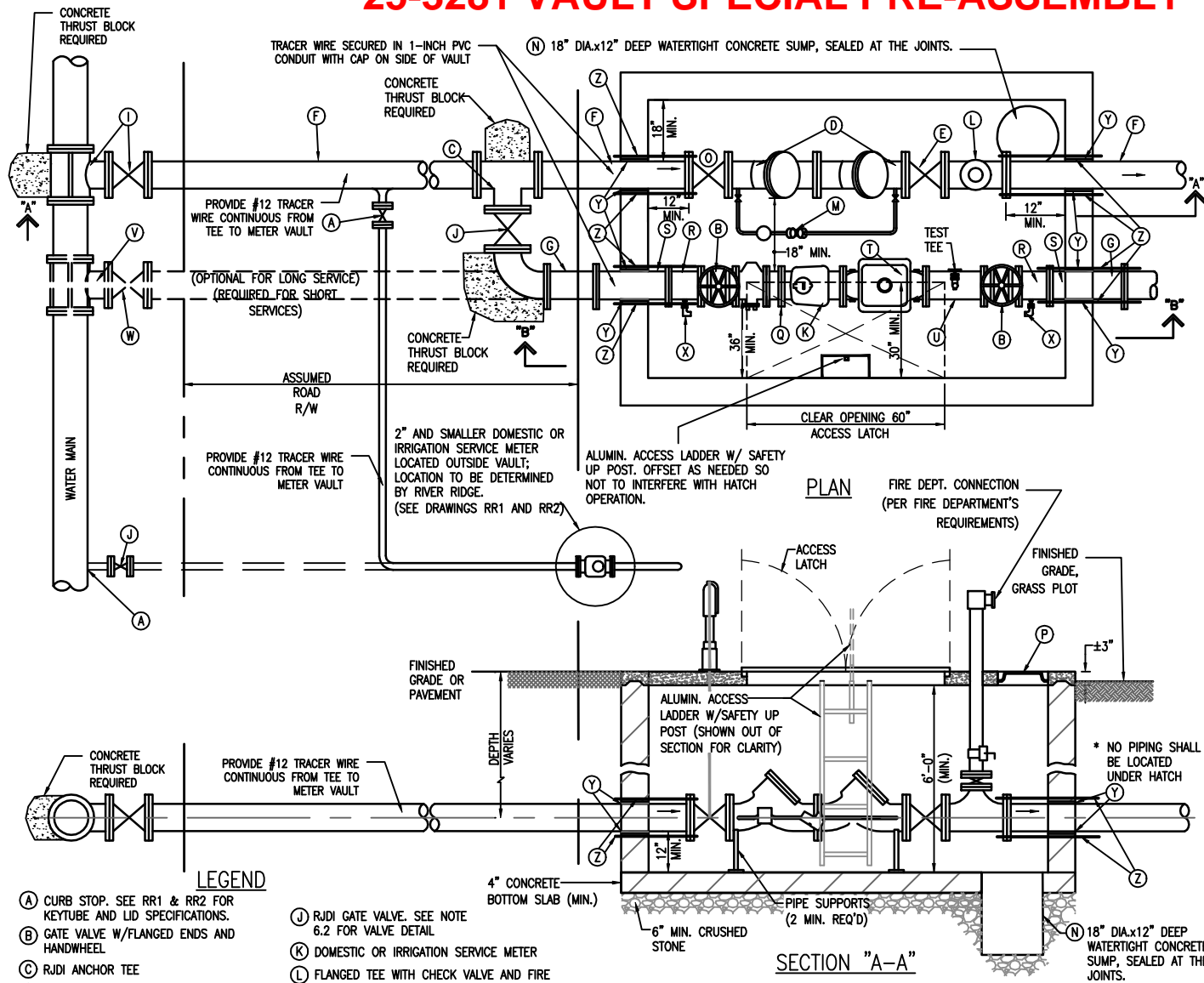
Note:

M.A. Industries Sump Pan & Lid
Supplied By iCast To Be Cast Into
Base Floor

25-3281 VAULT SPECIAL PRE-ASSEMBLY

NOTES:

- CUSTOMER SHALL FURNISH & INSTALL VAULT, INCLUDING ALL APPURTENANCES EXCEPT AS NOTED BELOW.
- VAULT SHALL BE 6'Hx10'Wx10'L (MIN.) INSIDE DIMENSIONS. VAULT SHALL BE CMU, PRE-CAST, OR CAST-IN-PLACE CONCRETE AT CUSTOMER'S SELECTION. VAULT SHALL BE BASED ON REQUIRED SPACING, AND SHALL BE SET LENGTHWISE W/SERVICE.
- TOP OF VAULT SHALL BE CONCRETE, AT LEAST 4" THICK WITH REINFORCING SUITABLE FOR ANTICIPATED LOADING. WHEN VAULT IS CONSTRUCTED IN PAVED AREAS, PAVEMENT SHALL BE LEVEL WITH TOP OF VAULT, AND THE TOP REINFORCED AS REQUIRED TO SUPPORT TRAFFIC LOADS (i.e. H-20 WHEEL LOADS). WHEN VAULT IS CONSTRUCTED OUTSIDE OF PAVEMENT, TOP OF VAULT SHALL BE 3" ABOVE FINISHED GRADE.
- BOTTOM OF VAULT SHALL BE 4" (MIN.) CONCRETE SLAB OVER 6" (MIN.) OF CRUSHED STONE. A MINIMUM CLEARANCE OF 12" BELOW BOTTOM OF FIRE SERVICE AND DOMESTIC SERVICE LINES IS REQUIRED.
- DOUBLE CHECK DETECTOR ASSEMBLY (DCDA) SHALL BE A MODEL APPROVED BY THE INDIANA DEPARTMENT OF ENVIRONMENTAL MANAGEMENT, WITH FLANGED OS&Y GATE VALVE ON INLET & OUTLET SIDES. STAINLESS STEEL BOLTS ARE REQUIRED. DCDA SHALL BE LOCATED INSIDE THE VAULT. DETECTOR METER IS FURNISHED BY RRWS AND INSTALLED BY CUSTOMER ON THE HINGE SIDE OF HATCH.
- ACCESS HATCH IN TOP OF VAULT SHALL BE 30"x60" (MIN.) ALUMIN. BILCO, HALLIDAY OR EQUAL. ACCESS HATCH SHALL HAVE SAME OR GREATER LOADING CAPACITY AS VAULT LID. PIPE HATCH FRAME SHALL DRAIN TO VAULT FLOOR OR SUMP, AS APPLICABLE.
- A SEPARATE METER PIT/VAULT SHALL BE USED FOR DOMESTIC AND IRRIGATION METER 2" AND SMALLER. SEE DETAIL RR2 & RR3 FOR DETAILS.
- A 2" TEST TEE SHALL BE INSTALLED AT LEAST 2 PIPE DIAMETERS DOWNSTREAM OF 3" OR LARGER METERS.
- TWO PIPE SUPPORTS REQUIRED FOR EACH LINE (MIN.). AS DIRECTED BY RRWS, ADDITIONAL PIPE SUPPORTS MAY BE REQUIRED FOR EACH LINE.
- SUMP LID SHALL BE 12"x12" SQUARE (MIN.) OR 12" DIAMETER (MIN.).
- THE ENTIRE BY-PASS LINE LEAK DETECTOR ASSEMBLY SHALL BE SUPPLIED AND MAINTAINED AS A CONNECTED UNIT. DO NOT DISASSEMBLE AFTER ASSEMBLY. TESTING REQUIRED WITHIN 30 DAYS AFTER INSTALL AND ANNUALLY THEREAFTER. RESULTS SHALL BE EMAILED TO WATER@RIVERRIDGECC.COM.
- BACKFLOW PREVENTER TESTING FOR FIRE, DOMESTIC, AND IRRIGATION SERVICES MUST OCCUR WITHIN 30 DAYS OF INSTALL.
- SIZE ON SIZE TAPS ONLY ALLOWED WITH RRWS APPROVAL. IF SIZE ON SIZE TAP IS APPROVED, IT SHALL INCLUDE A TAP SADDLE WITH FLANGED RIDGE (VALVE FLG X MJ).
- BRASS FITTINGS ONLY, NO STAINLESS STEEL WITHOUT RRWS APPROVAL.
- ANTI-SEIZE COMPOUND TO BE APPLIED TO ALL STAINLESS STEEL (S.S.) BOLTS.
- COORDINATE WITH RRWS AT LEAST 48 HOURS PRIOR TO TAPPING MAIN.



PLAN

SECTION "A-A"

LEGEND

- (A) CURB STOP. SEE RR1 & RR2 FOR KEYTUBE AND LID SPECIFICATIONS.
- (B) GATE VALVE W/FLANGED ENDS AND HANDWHEEL
- (C) RDJI ANCHOR TEE
- (D) DOUBLE CHECK DETECTOR ASSEMBLY(DCDA)
- (E) FLANGED OS&Y VALVE
- (F) FIRE LINE (PVC, C900, DR 18 OR DI, AWWA C151 CLASS 250)
- (G) DOMESTIC OR IRRIGATION SERVICE
- (H) NOT USED
- (I) TAPPING SLEEVE W/TAPPING VALVE & BOX (COORDINATE W/UTILITY SUPERINTENDENT)
- (J) RDJI GATE VALVE. SEE NOTE 6.2 FOR VALVE DETAIL
- (K) DOMESTIC OR IRRIGATION SERVICE METER
- (L) FLANGED TEE WITH CHECK VALVE AND FIRE DEPARTMENT CONNECTION
- (M) BY-PASS LINE LEAK DETECTOR METER (AMR REQUIRED) AND ASSEMBLY (SEE NOTES 5 AND 11)
- (N) SUMP PIT
- (O) FLANGED OS&Y VALVE WITH PIT TYPE POST INDICATOR
- (P) SUMP LID
- (Q) STRAINER W/ FLANGED ENDS
- (R) ADAPTER SPOOL WITH FLANGED ENDS
- (S) ADAPTER (FLGMJ OR FLG&PE)
- (T) CHECK VALVE W/ FLANGED ENDS
- (U) SPOOL PIECE (FLG) W/ 2" BALL VALVE ASSEMBLY
- (V) TAPPING SADDLE X MJ
- (W) RDJI GATE VALVE, 4" MIN. MJ&MJ, USE 4"x3" REDUCER AS NEEDED. SEE RR6.2 FOR VALVE DETAIL.
- (X) 2" DIA. X 3" LONG NIPPLE (MALE THREAD), 2" CURB STOP (FEMALE THREAD), 2" STREET ELL (MALE X FEMALE THREAD), AND 2" PLUG (MALE THREAD).
- (Y) LINK-SEAL, A-LOK CAST-IN OR EQUAL PIPE CONNECTORS / SEALS REQUIRED. BOOT CONNECTORS NOT ALLOWED. GROUT AND HYDRAULIC CEMENT NOT ALLOWED.
- (Z) 3/4" STAINLESS STEEL ALL-THREAD RODS W/ 1-BOLTS (2). ANCHOR ALL-THREAD RODS INTO VALVE VAULT WITH EXPANSION ANCHORS TO DEPTH RECOMMENDED BY ANCHOR MANUFACTURER.

RIVER RIDGE

COMMERCE CENTER

SHORT & LONG SIDE VALVE VAULT

STANDARD COMBINED FIRE SERVICE
METER VAULT WITH 3" AND LARGER
DOMESTIC OR IRRIGATION METER CONFIGURATION

DATE	JANUARY 2024	SCALE	NOT TO SCALE
DRAWING NO.	RR4.1	SHEET	1 OF 3