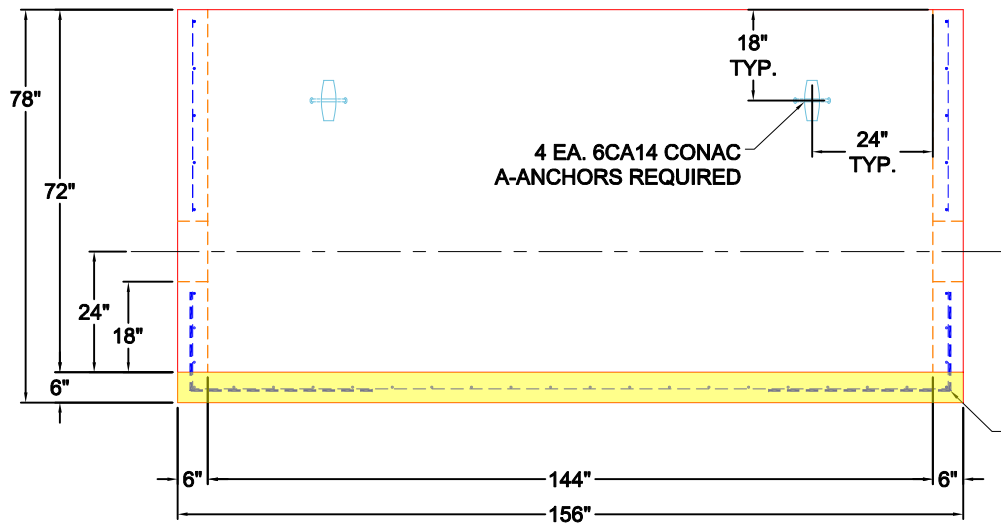


TOP VIEW

GENERAL NOTES:

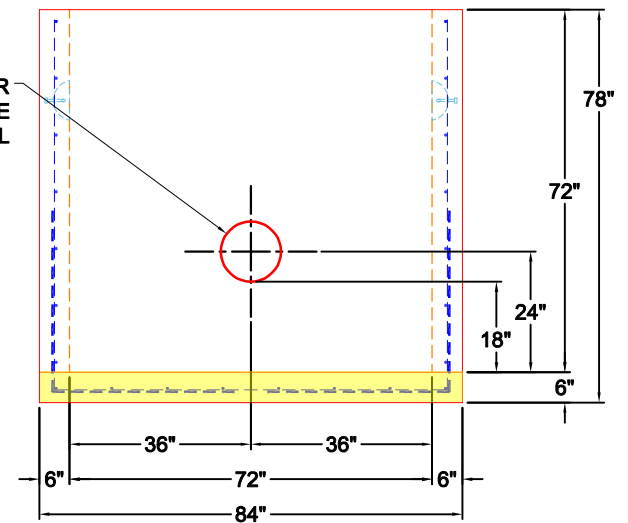
1. MANUFACTURED TO ASTM C-913 (LATEST REVISION).
2. CONCRETE: 5,000 PSI AT 28 DAYS.
3. REINFORCING: #5 BAR @ 8" C-C E.W. PER ASTM A615 (GRADE 60).
4. WEIGHTS:
FIRST POUR - 8,797 LBS.
 SECOND POUR - 14,217 LBS.
 TOTAL - 23,014 LBS
5. VAULT JOINT TO BE SEALED WITH CS-102 ROLL BUTYL MASTIC. SUPPLIED BY ICAST

FIRST POUR DRAWING




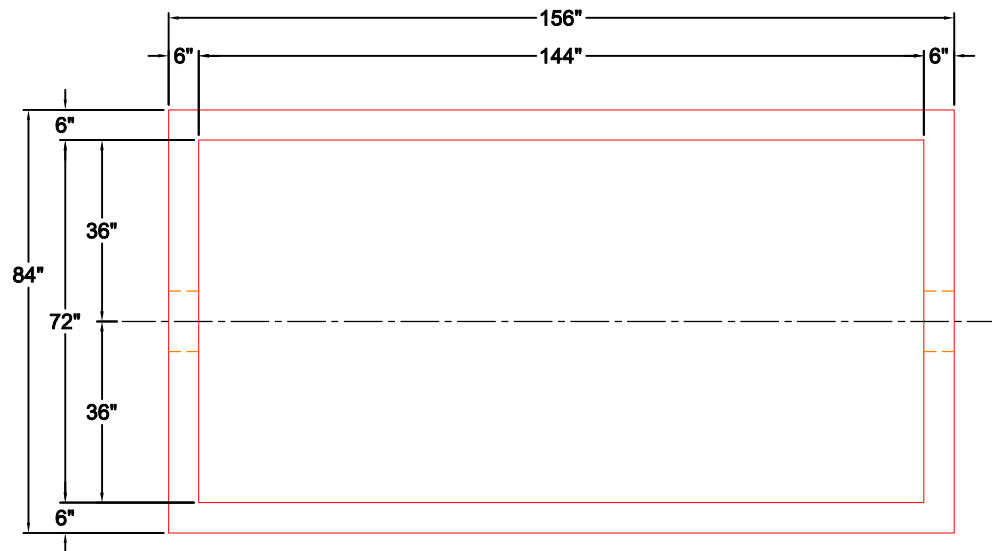
FRONT VIEW

Ø12" HOLE FOR Ø8" DUCTIE PIPE NEAR AND FAR WALL



RIGHT VIEW

PRODUCTION WORK ORDER		PRODUCT I.D.: BX072144-06W06F-VF		DESCRIPTION: 72" X 144" X 72" TALL VAULT		
	QUALITY CONTROL CHECKLIST		PRODUCT VIEW: RIGHT SIDE UP		CUSTOMER: HAYES PIPE SUPPLY	
	<input type="checkbox"/> ALL DIMENSIONS CORRECT.		PLANT: BEAVER DAM, KY.		PROJECT: GALLATIN VAULT	
	<input type="checkbox"/> LIFTERS INSTALLED.		WEIGHT: 23,014 LBS.		STRUCTURE: MASTER METER VAULT	
	<input type="checkbox"/> OPENING CORRECT LOCATION.		TOP SECTION JOINT: N/A		ORDER NO: 25-3273	
	<input type="checkbox"/> REINFORCING CORRECT.		BASE SECTION JOINT: N/A		PC: A. CHAMBERS DRAWING: J. COPPAGE	
<input type="checkbox"/> SURFACE QUALITY ACCEPTABLE.		QC CHECK INITIALS:		DATE: 11/4/25 SCALE: NTS PG. 1 of 1		
<input type="checkbox"/> EDGES CHAMFERED.						
<input type="checkbox"/> ALL PATCHWORK ACCEPTABLE.						

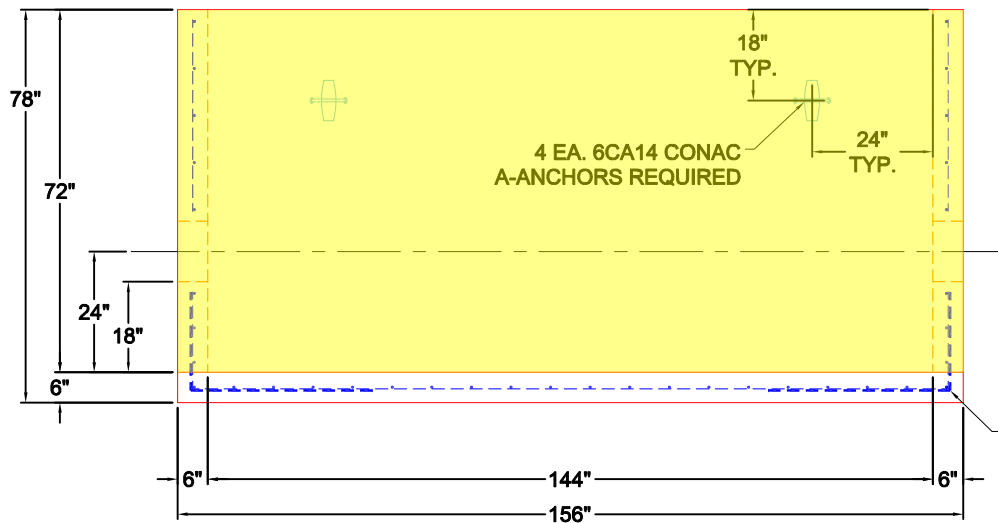


TOP VIEW

GENERAL NOTES:

1. MANUFACTURED TO ASTM C-913 (LATEST REVISION).
2. CONCRETE: 5,000 PSI AT 28 DAYS.
3. REINFORCING: #5 BAR @ 8" C-C E.W. PER ASTM A615 (GRADE 60).
4. WEIGHTS:
FIRST POUR - 8,797 LBS.
SECOND POUR - 14,217 LBS.
TOTAL - 23,014 LBS
5. VAULT JOINT TO BE SEALED WITH CS-102 ROLL BUTYL MASTIC. SUPPLIED BY ICAST

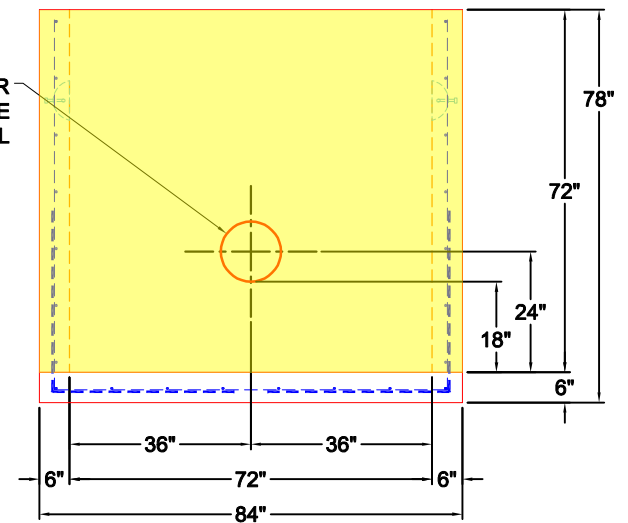
SECOND POUR DRAWING




FRONT VIEW

Ø12" HOLE FOR Ø8" DUCTIE PIPE NEAR AND FAR WALL

30" X 30" #5 BAR @ 12" ON CENTER TIED INTO THE MAT



RIGHT VIEW

		PRODUCTION WORK ORDER QUALITY CONTROL CHECKLIST <input type="checkbox"/> ALL DIMENSIONS CORRECT. <input type="checkbox"/> LIFTERS INSTALLED. <input type="checkbox"/> OPENING CORRECT LOCATION. <input type="checkbox"/> REINFORCING CORRECT. <input type="checkbox"/> SURFACE QUALITY ACCEPTABLE. <input type="checkbox"/> EDGES CHAMFERED. <input type="checkbox"/> ALL PATCHWORK ACCEPTABLE.	PRODUCT I.D.: BX072144-06W06F-VF PRODUCT VIEW: RIGHT SIDE UP PLANT: BEAVER DAM, KY. WEIGHT: 23,014 LBS. TOP SECTION JOINT: N/A BASE SECTION JOINT: N/A QC CHECK INITIALS:	DESCRIPTION: 72" X 144" X 72" TALL VAULT CUSTOMER: HAYES PIPE SUPPLY PROJECT: GALLATIN VAULT STRUCTURE: MASTER METER VAULT ORDER NO: 25-3273 PC: A. CHAMBERS DRAWING: J. COPPAGE DATE: 11/4/25 SCALE: NTS PG. 1 of 1
---	--	--	---	---