

Job Name: 25-3266 GAF Sanitary Sewer Relocation
 Job Location: MT. Vernon, IN
 Contractor: Deig Bros Lumber & Construction Co, Inc.

Plant: 100
 10/28/2025 6:25:51 PM

Tech: J. Horsley -F
 PC: A. Chambers

Structure ID: WET WELL

P3 MH048LD12S

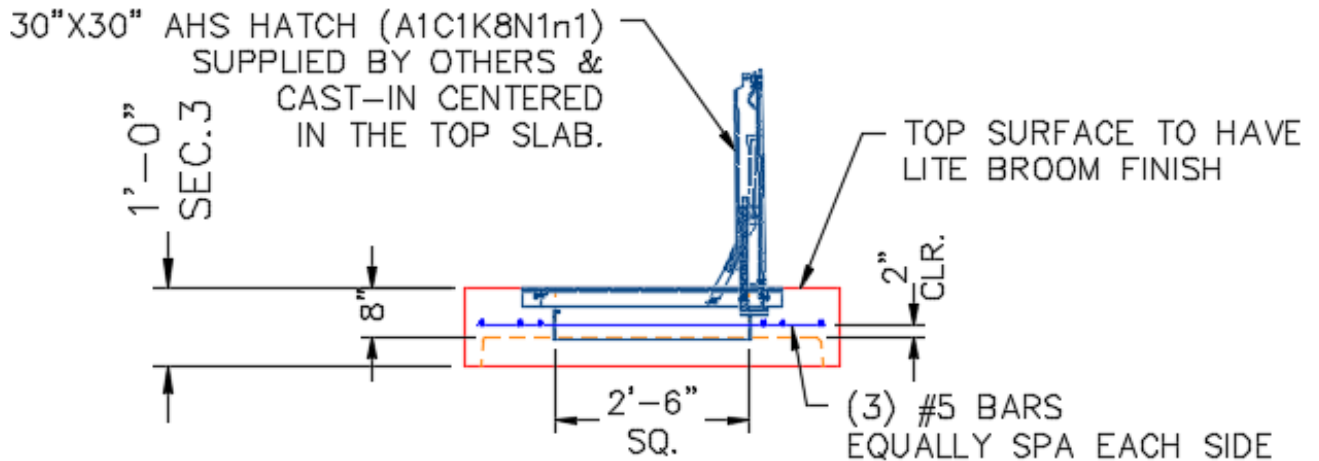
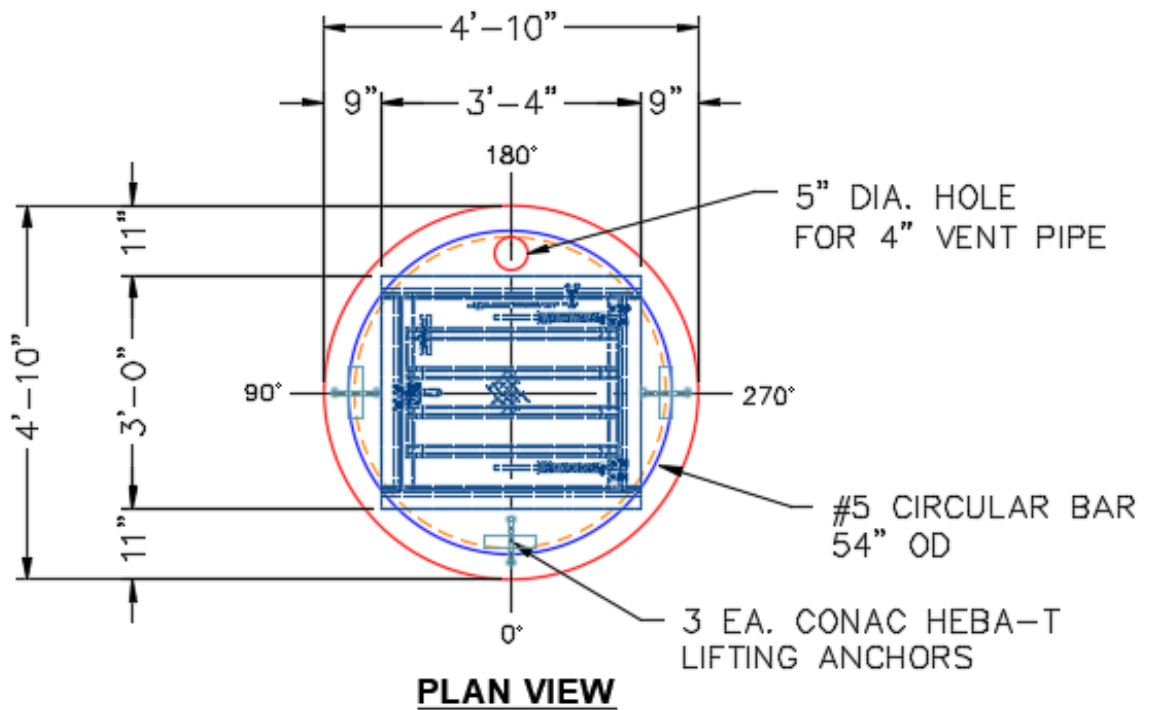
MH FLAT TOP w/30"x30" Hatch F/G

- P4) 30" x 30" - CASTING HEIGHT - 0"
- P3) 48" - MH FLAT TOP w/30"x30" Hatch F/G - 12"
- P2) 48" - MH RISER SPECIAL T/G - 66"
- P1) 48" - MH BASE w/FLANGE (12F/08EF) T/n - 72"
- 1) JOINT WRAP - 12" WD x 048" MAC WRAP
- 1) JOINT WRAP PRIMER - CONSEAL CS-75 (1 gal.)
- 2) 48" - Conseal CS-231 1.00" (Double)
- 1) PSX - 8QRS-S NYLO
- 1) PSX - 8QRS DD

0 lb
 1350 lb
 4589 lb
 9339 lb
 0 lb
 0 lb
 0 lb
 6 lb
 6 lb

 Structure Total: 15292 lb

Structure Notes:
 1. PER ASTM C478 SPECIFICATIONS.
 2. CONCRETE = 5,000 PSI AT 28 DAYS.
 3. HATCH SUPPLIED BY OTHERS (USF 30"x30" AHS)
 .
 REINFORCING PER ASTM A615 (GRADE 60).
 - TOP SLAB = H20 LOADING.
 - RISER/WALLS (As .12)
 - FLOOR (As .31) #5 BARS AT 12" C.C.E.W.



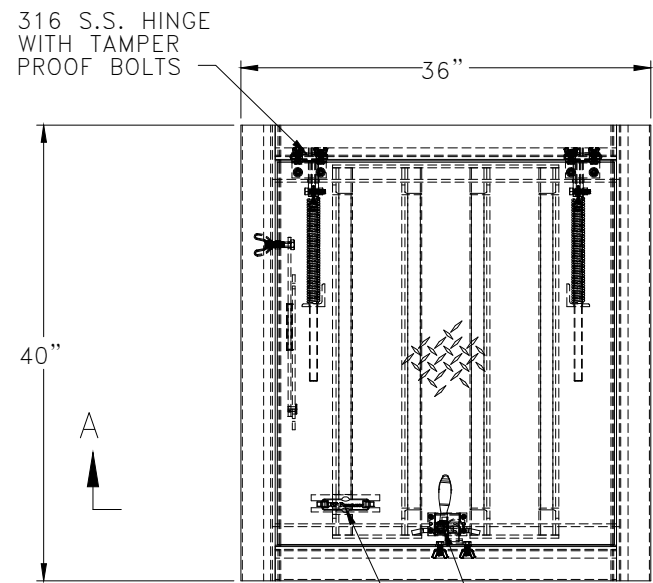
Coating (Int):
 Coating (Ext):

Seam Up: Flat
 Seam Dn: Groove

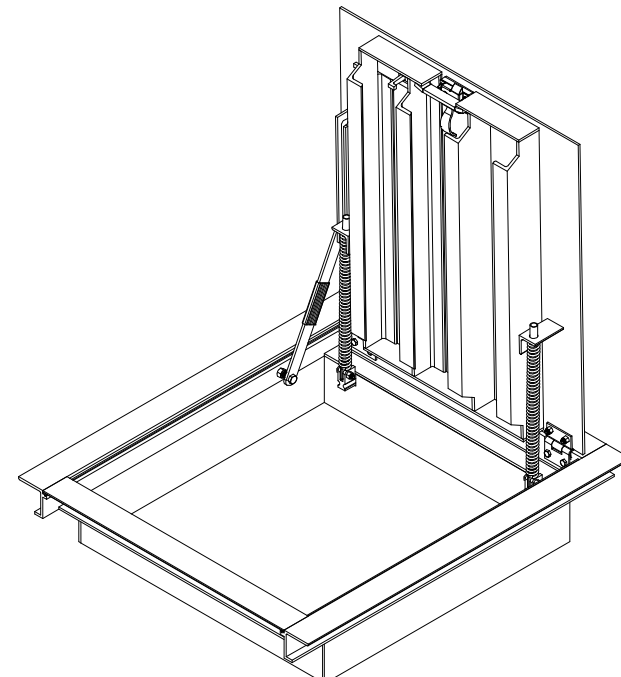
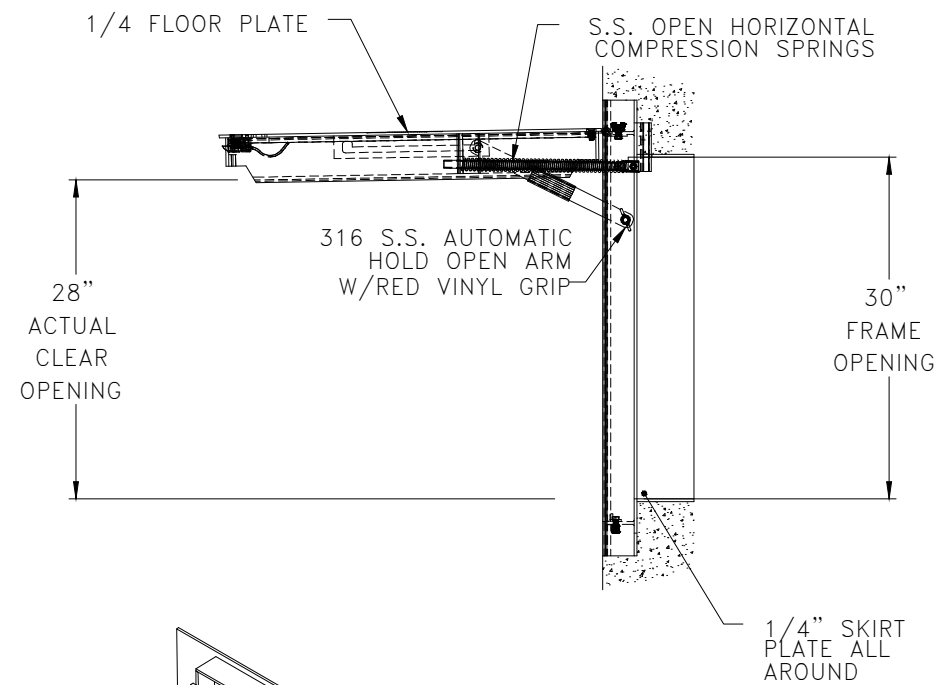
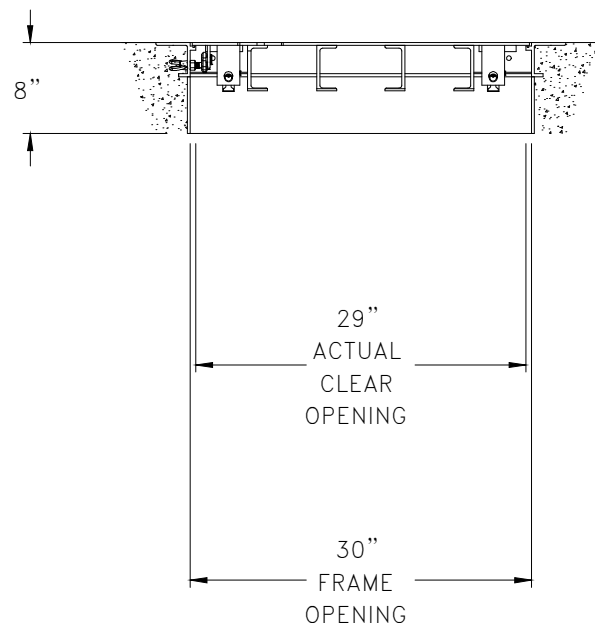
Wall Thickness: 5"

Height (Ext): 12"

Weight (Net): 1350 lb
 Volume (Net): 0.33cu.yd

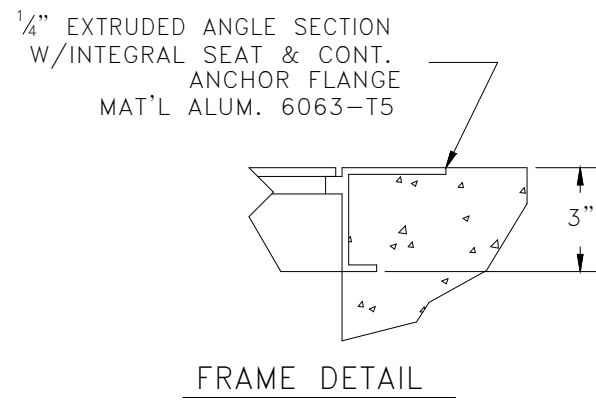


WATERTIGHT SLAMLOCK
FLUSH ALUM DROP HANDLE



OPTIONS:
 1-SPRINGS OPEN HORIZONTAL
 2-SLAMLOCK STANDARD
 3-SKIRT FOR A 8 SLAB
 4-BITUMINOUS PAINT
 5-MILL FINISH

NOTES:
 1-MATERIAL: ALUMINUM
 2-LOADING: DESIGNED FOR AASHTO H-20 WHEEL LOADS WITH MAX DEFL OF 1/150 OF THE SPAN DESIGNED FOR OCCASIONAL TRAFFIC ONLY.
 3-AREA OF FRAME IN CONTACT WITH CONCRETE TO BE PAINTED WITH BITUMINOUS COATING.
 4-APPROXIMATE WEIGHT: 105.84 LBS.



Job Name: 25-3266 GAF Sanitary Sewer Relocation
 Job Location: MT. Vernon, IN
 Contractor: Deig Bros Lumber & Construction Co, Inc.

Structure ID: WET WELL

UNLESS OTHERWISE NOTED ON THIS DRAWING, CLEARANCE BETWEEN FRAME AND COVER(S) IS DESIGNED NOT TO EXCEED 3/8".

THIS DOCUMENT IS THE PROPERTY OF U.S.F. FABRICATION, INC AND CONTAINS PROPRIETARY INFORMATION. IT SHALL NOT BE MODIFIED, COPIED, FURNISHED NOR DISTRIBUTED (IN WHOLE OR IN PART) WITHOUT PROPER AUTHORIZATION OF U.S.F. FABRICATION, INC.

INTERPRET DIMENSIONS AND TOLERANCES PER ASME Y14.5M

BREAK ALL SHARP CORNERS & EDGES

TOLERANCES UNLESS OTHERWISE SPECIFIED: INCHES AND FRACTIONS:

<10' = ± 1/8
 >10' = ± 1/4

COPYRIGHT © 2025 ALL RIGHTS RESERVED

HATCH AHS 30X30 A1C1K8N1n1 GENERAL ARRANGEMENT			
DRAWN BY: SB0B	SCALE: 1 : 16	SHEET 1 OF 1	DATE: 08/15/25
APP'D BY: SB0B	DWG. NO: 1000288058	SHEET SIZE: B	REV: 0