

Job Name: 25-3266 GAF Sanitary Sewer Relocation Job Location: MT. Vernon, IN Contractor: Deig Bros Lumber & Construction Co, Inc.	Plant: 100 10/28/2025 6:25:28 PM	Tech: J. Horsley -F PC: A. Chambers
---	-------------------------------------	--

Structure ID: WET WELL

P2 MH048RS66S

MH RISER SPECIAL T/G

P4) 30" x 30" - CASTING HEIGHT - 0"	0 lb
P3) 48" - MH FLAT TOP w/30"x30" Hatch F/G - 12"	1350 lb
P2) 48" - MH RISER SPECIAL T/G - 66"	4589 lb
P1) 48" - MH BASE w/FLANGE (12F/08EF) T/n - 72"	9339 lb
1) JOINT WRAP - 12" WD x 048" MAC WRAP	0 lb
1) JOINT WRAP PRIMER - CONSEAL CS-75 (1 gal.)	0 lb
2) 48" - Conseal CS-231 1.00" (Double)	0 lb
1) PSX - 8QRS-S NYLO	6 lb
1) PSX - 8QRS DD	6 lb
Structure Total:	15292 lb

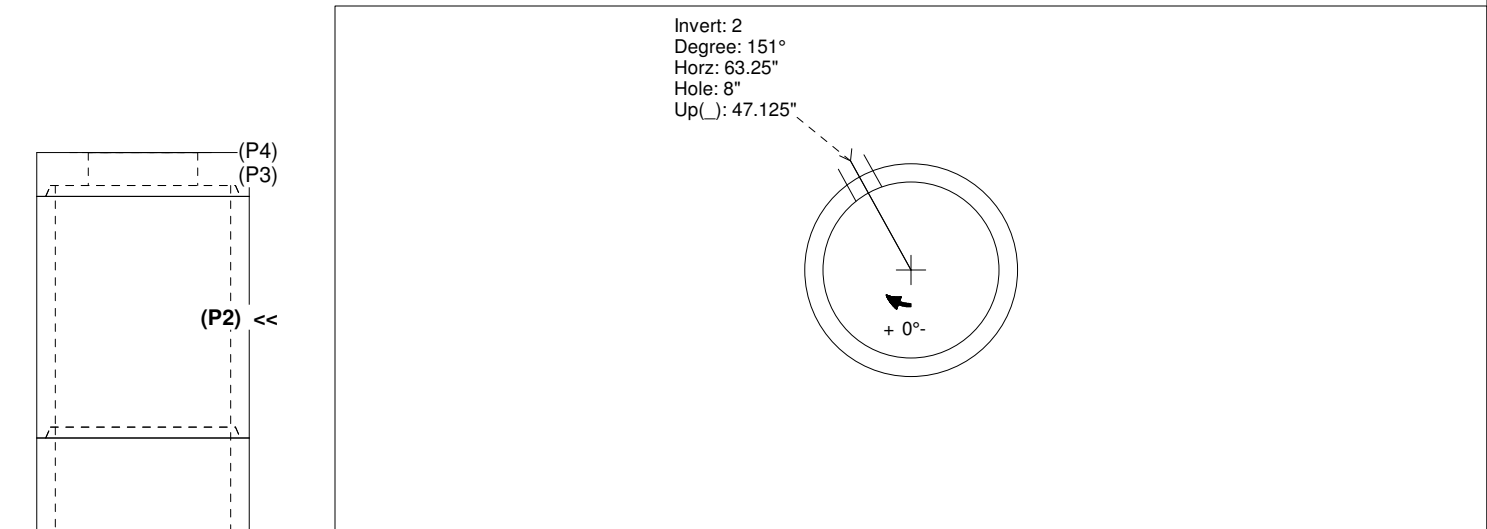
Structure Notes:
 1. PER ASTM C478 SPECIFICATIONS.
 2. CONCRETE = 5,000 PSI AT 28 DAYS.
 3. HATCH SUPPLIED BY OTHERS (USF 30"x30" AHS)

REINFORCING PER ASTM A615 (GRADE 60).
 - TOP SLAB = H20 LOADING.
 - RISER/WALLS (As .12)
 - FLOOR (As .31) #5 BARS AT 12" C.C.E.W.

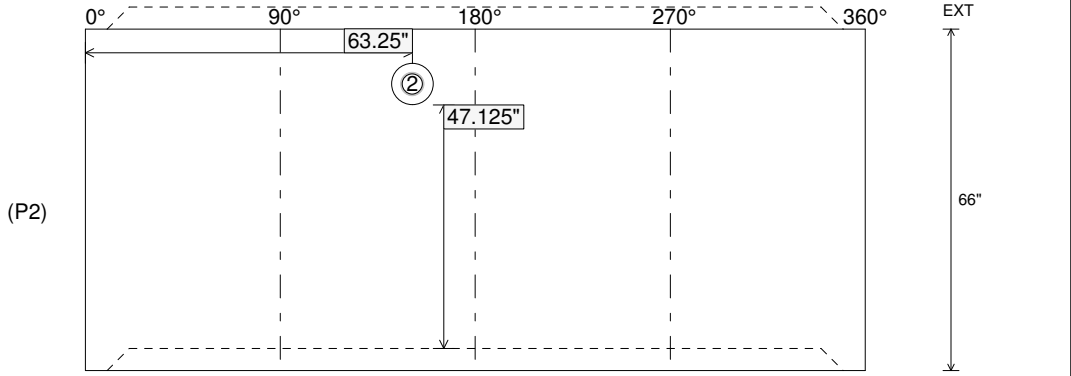
Rim: 412'	Rim to Invert: 8'	Slack: 0"	Sump: 54"	Step Position:
-----------	-------------------	-----------	-----------	----------------

Position	Elev	Angle	Ext. (cw)	Pipe	Pipe OD	Connector	Hole	Horz Size	Up ()	Offset
Invert 1										
Invert 2	409.95'	151°	76.375"	4" PVC SDR17	4.5"	PSX 8QRS DD	8"	8.038"	47.125"	0"
Invert 3										
Invert 4										
Invert 5										
Invert 6										
Invert 7										
Invert 8										

RIGHT-SIDE UP VIEW (int. dimensions)



INSIDE WALL DIMENSIONS



Coating (Int): Coating (Ext):	Seam Up: Tongue Seam Dn: Groove	Wall Thickness: 5" Floor Height: 0"	Height (Int): 66" Height (Ext): 66"	Weight (Net): 4589 lb Volume (Net): 1.17cu.yd
----------------------------------	------------------------------------	--	--	--