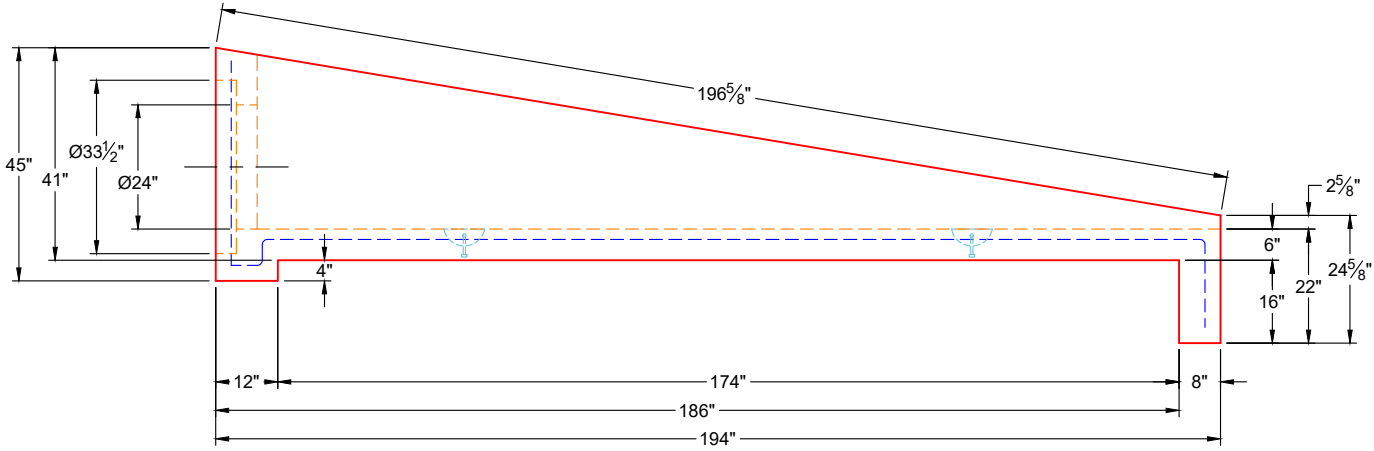


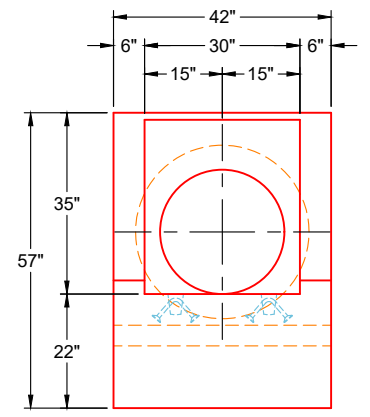
FRONT VIEW

GENERAL NOTES:

1. MANUFACTURED PER TDOT D-PE-24A SPECS
2. CONCRETE: 5,000 PSI OR GREATER AT 28 DAYS
3. REINFORCEMENT: PER TDOT D-PE-24A SPECS
4. WEIGHT: 8,645 LBS
5. CONTRACTOR TO VERIFY ALL DIMENSIONS BEFORE MANUFACTURE
6. ALL LIFT POINTS & PIPE OPENINGS TO BE GROUTED BY CONTRACTOR
7. 3 EA. STRUCTURAL STEEL GRATES (PER TDOT STANDARD DRAWING D-SEW-1A) SUPPLIED BY ICAST



FRONT VIEW



SIDE VIEW

REVISION INFORMATION

REV.	DATE	DESCRIPTION
NO REVISIONS TO DATE		



SUBMITTAL DRAWING: 24" TDOT SAFETY SIDE DRAIN 6:1		
CUSTOMER: CAPITAL CITY CONSTRUCTION SERVICES, LLC		
PROJECT: SAM RIDLEY PARKWAY ROADWAY IMPROVEMENTS		
STRUCTURE: ICAST L112 (24IN SSD 6-1)		
QUOTE/SALES ORDER NO: 25-3264		
CHECKED BY: B. SMITH	DRAWN BY: K. CARDWELL	
DATE: 12/16/25	SCALE: NTS	PG. 1 OF 1