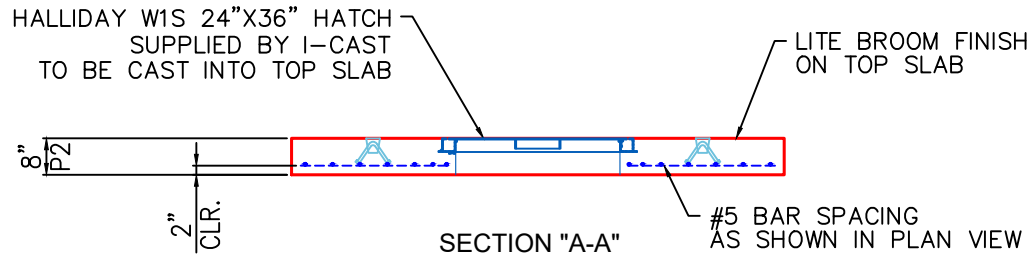


PLAN VIEW



NOTES:

1. MANUFACTURED PER ASTM C913 SPECIFICATIONS.
2. CONCRETE = 5,000 PSI AT 28 DAYS.
3. REINFORCING PER ASTM A615 (GRADE .60).
- TOP SLAB (As .62) #5 BARS AT 6" C.C.E.W
4. HATCH = HALLIDAY W1S 24"x36" WITH SKIRT FOR 8" SLAB. SUPPLIED BY ICAST TO BE CAST INTO TOP SLAB.

PRODUCTION WORK ORDER

PRODUCT I.D.: BX048096-08LD06S

DESCRIPTION: 48in x 96in x8" FLAT LID 6inW SPECIAL



QUALITY CONTROL CHECKLIST

- ALL DIMENSIONS CORRECT.
- LIFTERS INSTALLED.
- STEPPED HF CORRECT SIZE.
- REINFORCING CORRECT.
- SURFACE QUALITY ACCEPTABLE.
- EDGES CHAMFERED.
- ALL PATCHWORK ACCEPTABLE.

PRODUCT VIEW: RIGHT-SIDE UP

CUSTOMER: CORE & MAIN LP (BG)

PLANT: BEAVER DAM, KY.

PROJECT: RBELMARK VAULT 2

WEIGHT: 3,900 LBS.

STRUCTURE ID.: VAULT 3in

TOP SECTION JOINT: FLAT

SALES ORDER NO: 25-3234

BASE SECTION JOINT: FLAT

CHECK: B. SMITH

DRAWING: J. HORSLEY - F

QC CHECK INITIALS:

DATE: 11/05/25

SCALE: NTS

PG. 1 of 1