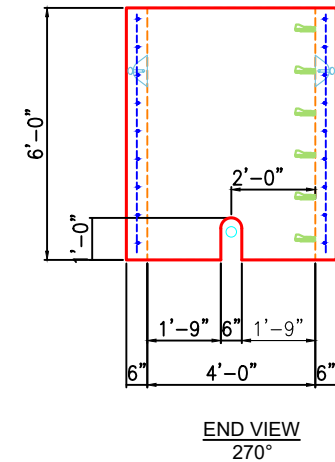
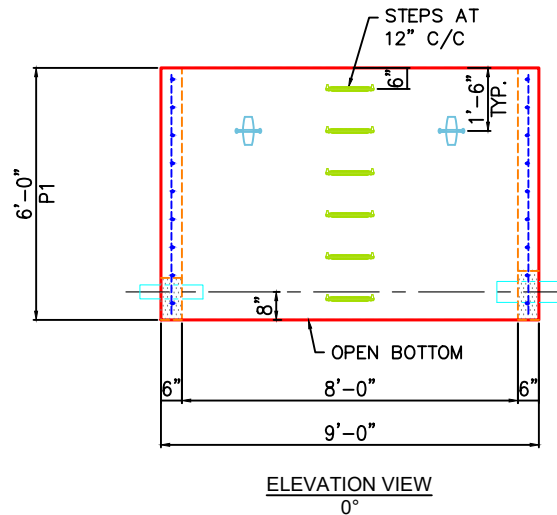
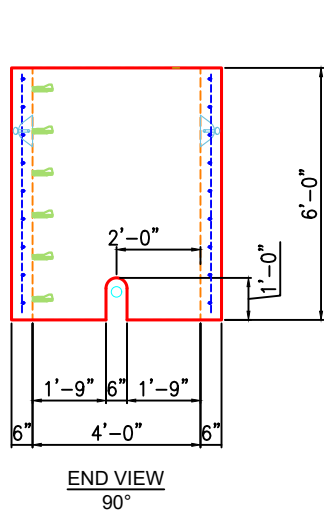
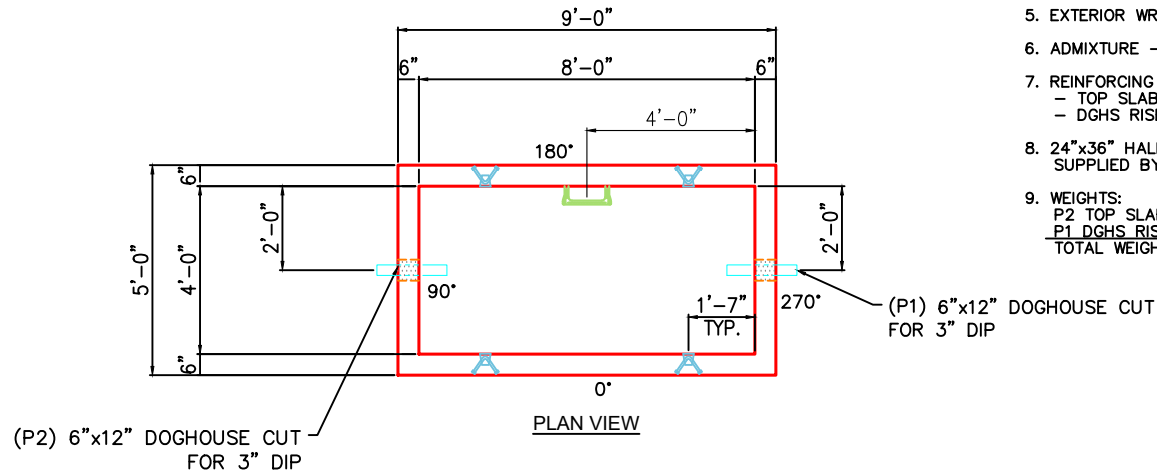


**NOTES:**

1. MANUFACTURED PER ASTM C913 SPECIFICATIONS.
2. CONCRETE = 5,000 PSI AT 28 DAYS.
3. STEPS REQUIRED.
4. JOINT SEALANT (SUPPLIED BY ICAST)  
CONSEAL CS-102 (1") DOUBLE.
5. EXTERIOR WRAP " 6" CONSEAL CS102.
6. ADMIXTURE - NOT REQUIRED.
7. REINFORCING PER ASTM A615 (GRADE 60).  
- TOP SLAB (As .62) #5 BARS AT 6" C.C.E.W.  
- DGHS RISER (As .47) #5 BARS AT 8" C.C.E.W.
8. 24"x36" HALLIDAY WIS HATCH WITH KIRT FOR 8" SLAB.  
SUPPLIED BY ICAST.
9. WEIGHTS:  
P2 TOP SLAB = 3,900 LBS  
P1 DGHS RISER = 11,241 LBS  
TOTAL WEIGHT: 15,141 LBS



**PRODUCTION WORK ORDER**

PRODUCT I.D.: BX4896-06RVF

DESCRIPTION: RISER 48in x 96in 6inW VARIABLE HT



**QUALITY CONTROL CHECKLIST**

- ALL DIMENSIONS CORRECT.
- LIFTERS INSTALLED.
- STEPPED HF CORRECT SIZE.
- REINFORCING CORRECT.
- SURFACE QUALITY ACCEPTABLE.
- EDGES CHAMFERED.
- ALL PATCHWORK ACCEPTABLE.

PRODUCT VIEW: RIGHT-SIDE UP

CUSTOMER: CORE & MAIN LP (BG)

PLANT: BEAVER DAM, KY.

PROJECT: BELMARK VAULT 2

WEIGHT: 11,241 LBS.

STRUCTURE ID.: VAULT 3in

TOP SECTION JOINT: FLAT

SALES ORDER NO: 25-3234

BASE SECTION JOINT: FLAT

CHECK: B. SMITH

DRAWING: J. HORSLEY

QC CHECK INITIALS:

DATE: 11/07/25

SCALE: NTS

PG. 1 of 1