

Structure ID: CBI 29

P1 MH048BA30

MH BASE T/n

P3) 18" x 36" - CASTING HEIGHT - 5.5" P2) 48" - MH FLAT TOP w/18"x36" Hole F/G - 12" P1) 48" - MH BASE T/n - 30" 1) 48" - Conseal CS-102 1.00" 1) 18" x 36" - Conseal CS-102 1.00" 1) Hole - 20 3) MH Step ML-10-TDS-NCR - 10"	0 lb 2008 lb 3291 lb 0 lb 0 lb 0 lb 0 lb 0 lb ----- 5299 lb
Structure Total: 5299 lb	

Structure Notes:

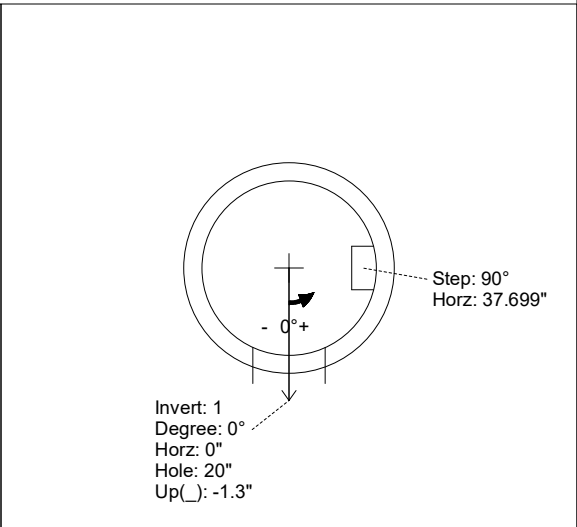
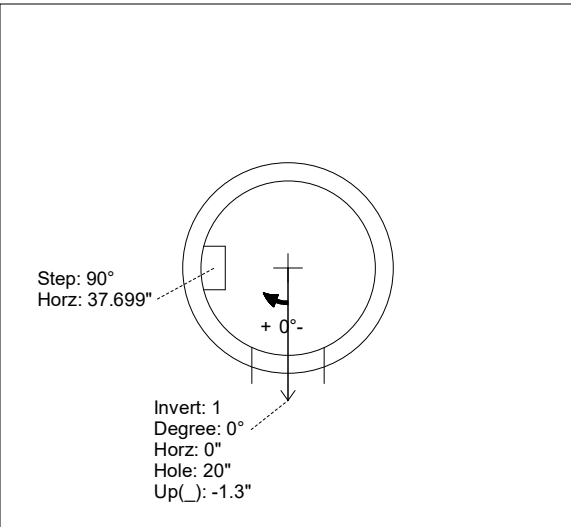
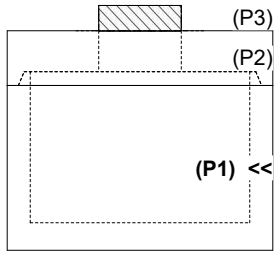
1. PER ASTM C-478 SPECIFICATIONS
2. CONCRETE: 4,000 PSI AT 28 DAYS
3. REINFORCEMENT: PER ASTM A615
4. NO STORM INVERT
5. STEPS AT 90 DEGREES
6. HOE 580-A FRAME & GRATES SUPPLIED BY OTHERS

Rim: 1052' Rim to Invert: 4' Slack: 0.5" Sump: 0" Step Position: 90

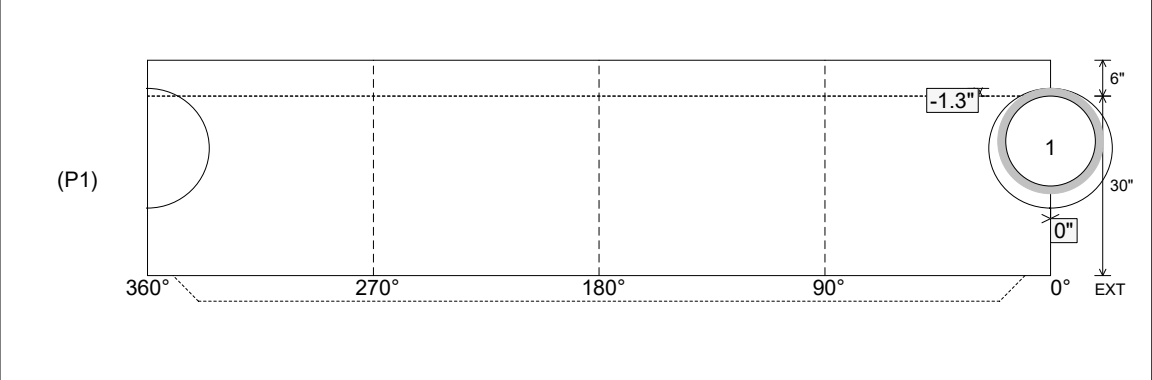
Position	Elev	Angle	Ext. (cw)	Pipe	Pipe OD	Connector	Hole	Horz Size	Up ()	Offset
Invert 1	1048'	0°	0"	15" HDPE	17.6"	Hole 20	20"	20.629"	-1.3"	0"
Invert 2										
Invert 3										
Invert 4										
Invert 5										
Invert 6										
Invert 7										
Invert 8										

RIGHT-SIDE UP VIEW (int. dimensions)

UPSIDE-DOWN VIEW (int. dimenions)



INSIDE WALL DIMENSIONS



Coating (Int): Coating (Ext):	Seam Up: Tongue Seam Dn: n/a	Wall Thickness: 5" Floor Height: 6"	Height (Int): 30" Height (Ext): 36"	Weight (Net): 3291 lb Volume (Net): 0.84cu.yd
----------------------------------	---------------------------------	----------------------------------------	----------------------------------------	--------------------------------------------------