



**Structure ID: ICAST LI6**

**P1 HWSFBIO18**

**18" - SLOPED & FLARED BOX I/O F/F**

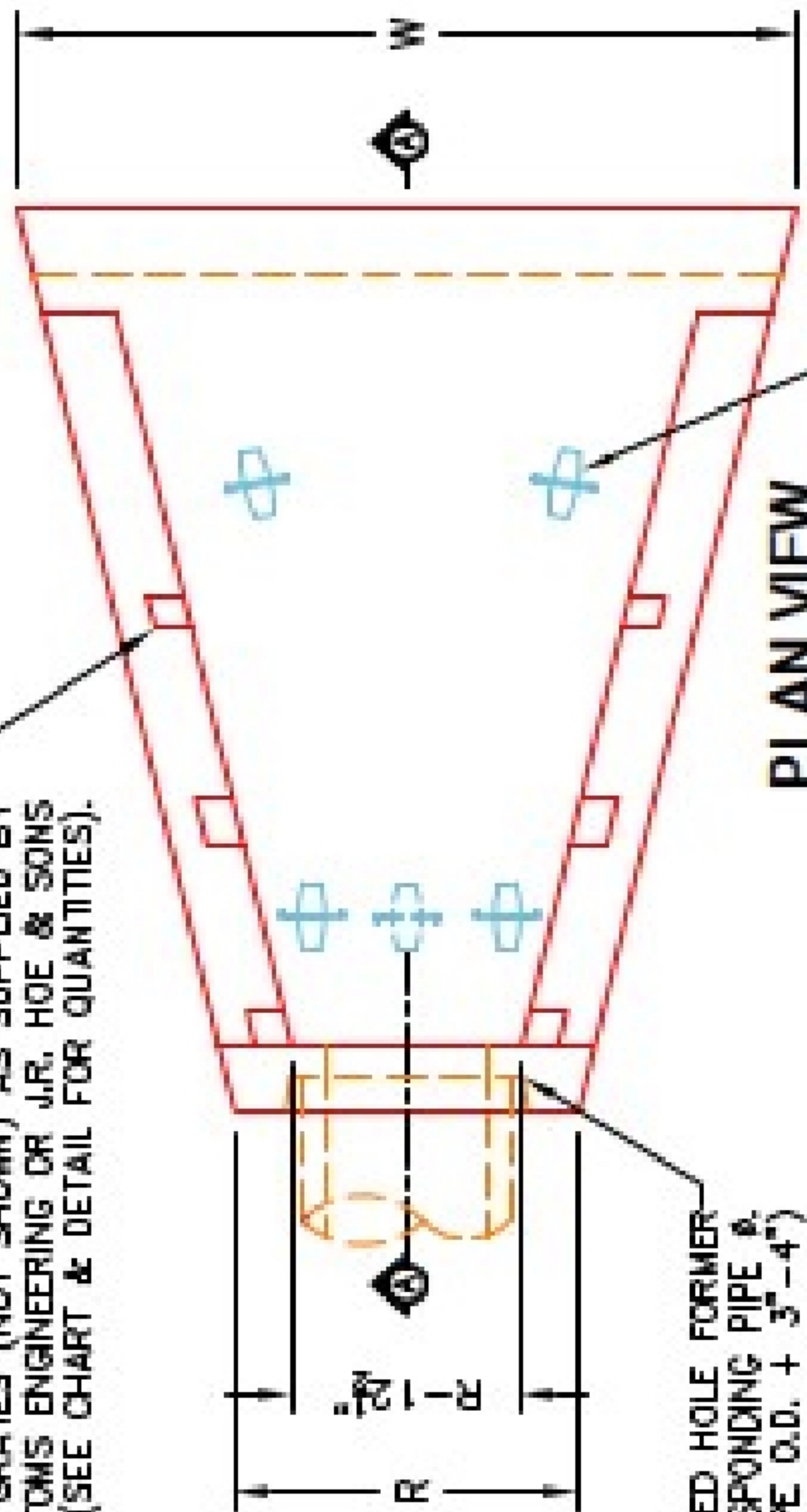
**NOTES:**

1. CONCRETE: KYTC APPROVED.
2. REINFORCING: #5 BAR @ 12" C/C E.W. - GRADE 60, (WITH 2" CONCRETE COVER MINIMUM)
3. REINFORCING BARS TO BE TACK WELDED OR TIED.
4. PIPE AND LIFTING ANCHOR POCKETS TO BE GROUTED WITH KYTC APPROVED NON-SHRINK GROUT.
5. DRAWING TO BE USED IN CONJUNCTION WITH KYTC STD. DRAWINGS RDB-105-06 & RDB-106-05 AND THE STANDARD SPECIFICATIONS FOR ROAD AND BRIDGE CONSTRUCTION.
6. 7" CHAMFER ON ALL EXPOSED EDGES.
7. PERFORMED STEPPED HOLE SIZED AS PER O.D. OF PIPE + 3"-4".

SLOTS AS REQUIRED FOR STRUCTURAL STEEL GRATES (NOT SHOWN) AS SUPPLIED BY BOTTOMS ENGINEERING OR J.R. HOE & SONS (SEE CHART & DETAIL FOR QUANTITIES).

STEPPED HOLE FORMER FOR CORRESPONDING PIPE Ø. (PIPE O.D. + 3"-4")

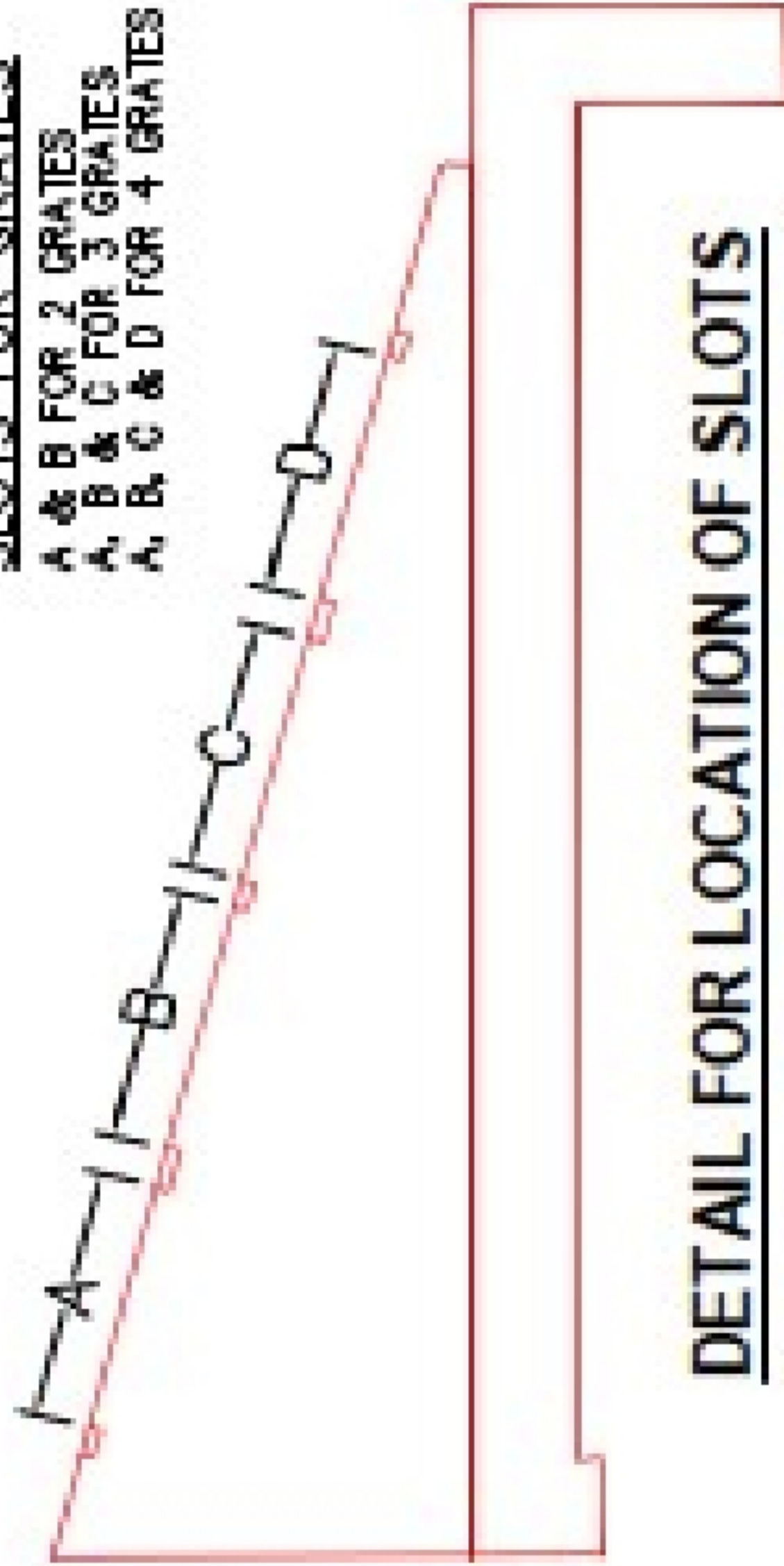
"A"-ANCHOR LIFTING SYSTEM FOR PLANT & FIELD HANDLING. (SEE CHART FOR TYPE & QTY.)



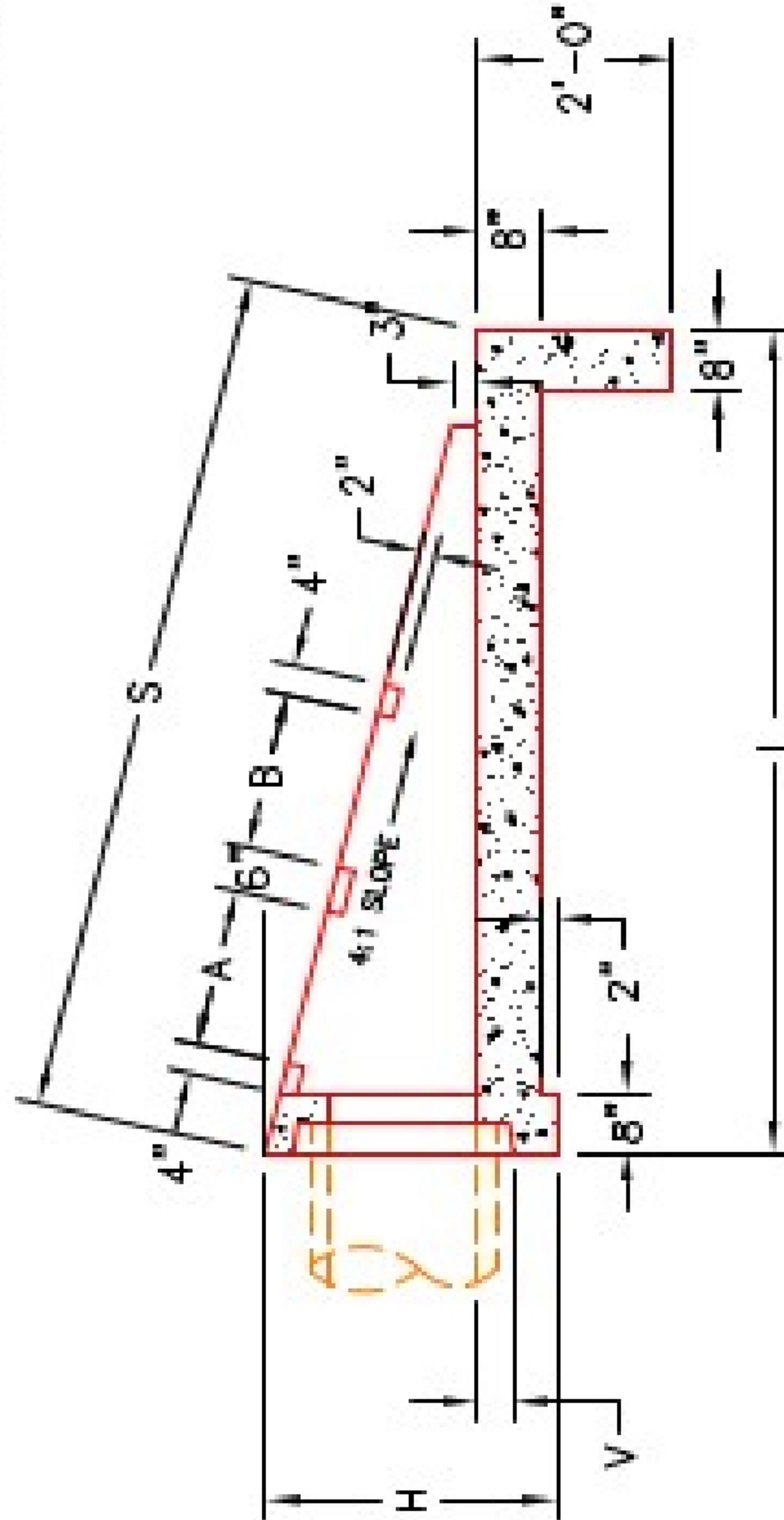
**PLAN VIEW**

**SLOTS FOR GRATES**

- A & B FOR 2 GRATES
- A, B & C FOR 3 GRATES
- A, B, C & D FOR 4 GRATES



**DETAIL FOR LOCATION OF SLOTS**



**SECTION A-A**

**FRONT ELEVATION**



INFRASTRUCTURE PRECAST, INC.  
 981 WEST 7TH ST., BEAVER DAM, KY, 42320  
 PHONE: (270) 363-2338, FAX: (270) 298-7424

KYTC 15"-36" SLOPED & FLARED BOX INLET-OUTLET HEADWALL (NO SKEW)

DRAWING NO.: ET-KYTC-124 DATE: 01-14-25  
 REVIEWED BY: JH. ROSS, PE DRAWN BY: H. RICHARDS  
 WEB: WWW.ICASTING.COM SCALE: NTS

**DIMENSIONS**

PIPE Ø	H	L	S	R	V	W	A	B	C	D	NO. GRATES		CONCRETE YD <sup>3</sup>	LBS. #4 BAR	LIFTING ANCHORS
											2	3			
15"	36"	102"	102 1/2"	36 1/2"	4"	87"	21"	21"	--	--	2 EA.	--	1.8	81	3 EA. CONAC BGA1B
18"	36"	102"	105 1/2"	36 1/2"	4"	87"	21"	21"	--	--	2 EA.	--	1.8	81	3 EA. CONAC BGA1B
24"	43"	138"	132"	43 1/2"	5"	107"	33"	33"	--	--	2 EA.	2 EA.	2.7	111	4 EA. CONAC BGA1B
30"	50"	154"	150 1/2"	49 1/2"	6"	127"	33"	33"	21"	21"	1 EA.	2 EA.	3.8	148	4 EA. CONAC BGA1B
36"	57"	180"	182 1/2"	56 1/2"	6"	147"	33"	33"	21"	21"	2 EA.	2 EA.	5.1	187	4 EA. CONAC BGA1B