

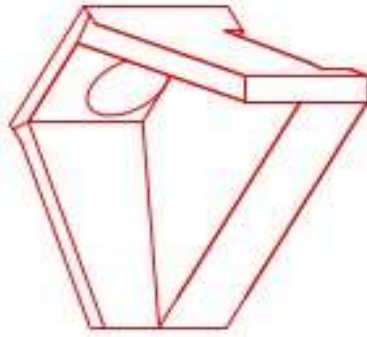


Structure ID: ST1

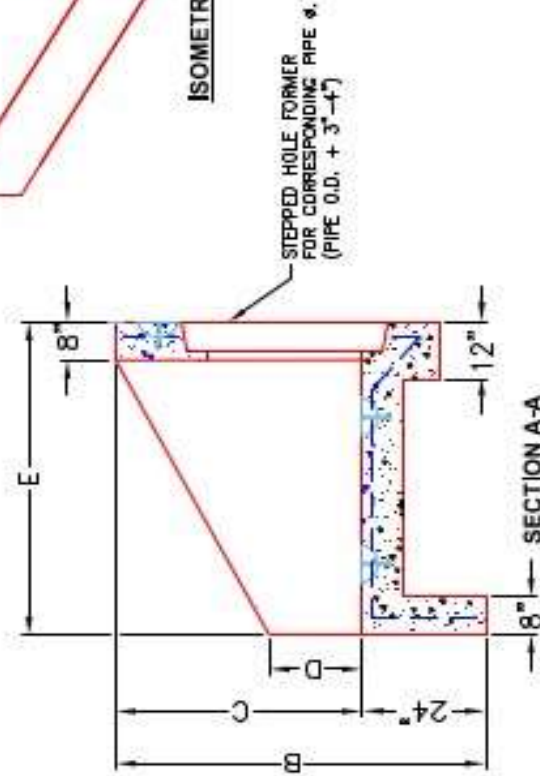
P1 HWPC30

30" - PIPE CULVERT HEADWALL

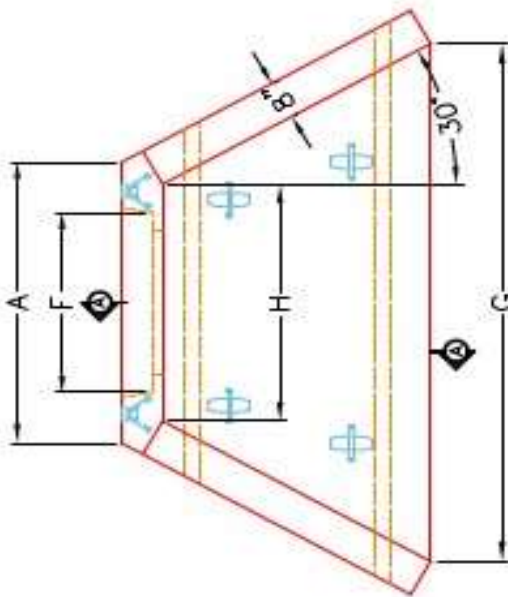
| DIMENSIONS | | | | | | | | WEIGHT | |
|------------|-------|-------|-------|-------|-------|-------|-------|--------|-------------|
| PRE # | A | B | C | D | E | F | G | H | |
| 3' | 6'-4" | 6'-4" | 4'-0" | 1'-4" | 5'-0" | 7'-6" | 1'-8" | 3'-4" | 6,820 lbs. |
| 3' | 6'-4" | 6'-4" | 4'-0" | 1'-4" | 5'-0" | 7'-6" | 1'-8" | 3'-4" | 6,820 lbs. |
| 4' | 6'-4" | 6'-7" | 5'-5" | 2'-4" | 6'-5" | 6'-6" | 1'-8" | 4'-11" | 13,233 lbs. |
| 4' | 6'-4" | 6'-7" | 5'-5" | 2'-4" | 6'-5" | 6'-5" | 1'-8" | 4'-11" | 13,233 lbs. |
| 5' | 7'-4" | 7'-4" | 6'-6" | 2'-4" | 7'-4" | 5'-8" | 0'-8" | 6'-0" | 8,422 lbs. |
| 6' | 7'-4" | 7'-4" | 6'-6" | 2'-4" | 7'-4" | 7'-4" | 0'-8" | 6'-0" | 8,422 lbs. |



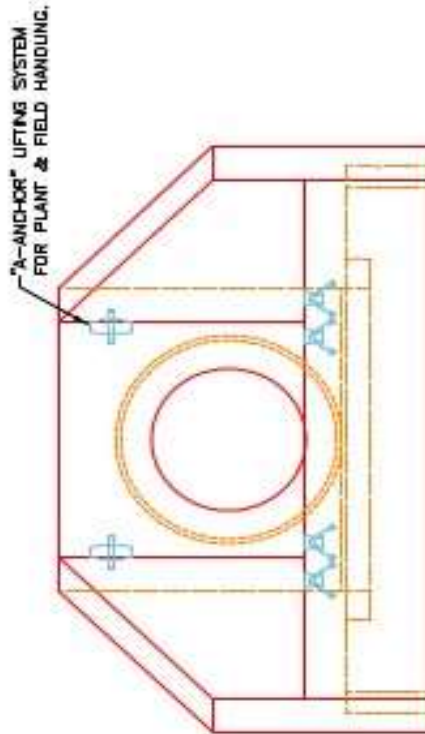
ISOMETRIC VIEW



SECTION A-A



PLAN VIEW



FRONT ELEVATION

NOTES:

1. CONCRETE: KYTC APPROVED.
2. REINFORCING: #5 BAR @ 12" C/C E.W.-GRADE 60, (WITH 2" CONCRETE COVER MINIMUM)
3. REINFORCING BARS TO BE TACK WELDED OR TIED.
4. PIPE AND LIFTING ANCHOR POCKETS TO BE GROUTED WITH KYTC APPROVED NON-SHRINK GROUT.
5. DRAWING TO BE USED IN CONJUNCTION WITH KYTC STD. DRAWING RDH-110-02, RDH-210-03 AND THE STANDARD SPECIFICATIONS FOR ROAD AND BRIDGE CONSTRUCTION.
6. 3" CHAMFER ON ALL EXPOSED EDGES.
7. PREFORMED STEPPED HOLE SIZED AS PER O.D. OF PIPE + 3"-4".

APPROVED FOR DESIGN ONLY

APPROVED
 AS PER SPECIFICATION 1012
 KYTC DIV. OF CONSTRUCTION
 DATE: 1/20/2021 9:50 AM
 INSTRUCTION



INFRASTRUCTURE PRECAST, INC.
 401 WEST 7TH ST., BOWLING GREEN, KY, 40303
 PHONE: (270) 858-2288, FAX: (270) 858-2484

KYTC 30"-80" PIPE CULVERT HEADWALL

DRAWING NO.: KYTC PC-118 DATE: 12-14-20
 DESIGNED BY: J.H. DAVIS, P.E. DRAWN BY: K. RICHARDS
 WEB: WWW.ICASTINC.COM SCALE: 1/8"