

Job Name: 25-3175 - MSU MDAB
 Job Location: Morehead, KY 40351
 Contractor: Rising Sun Development Company

Plant: Beaver Dam, KY
 10/29/2025 8:21:06 AM

Tech: K. Cardwell
 PC: J. Jarvis



Structure ID: OCS

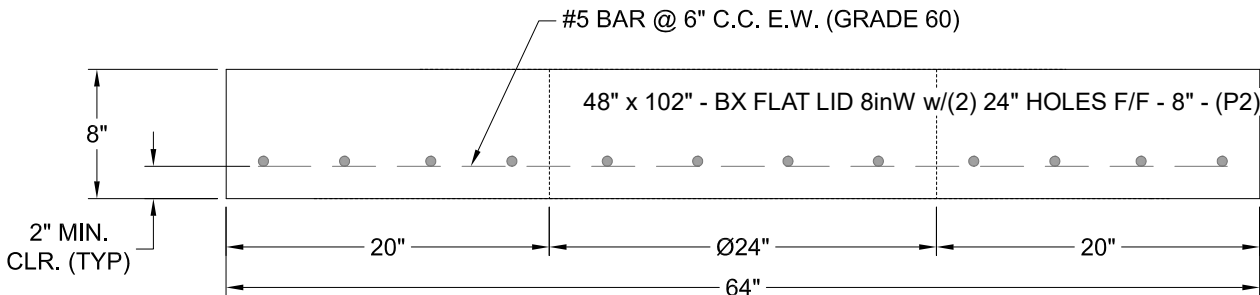
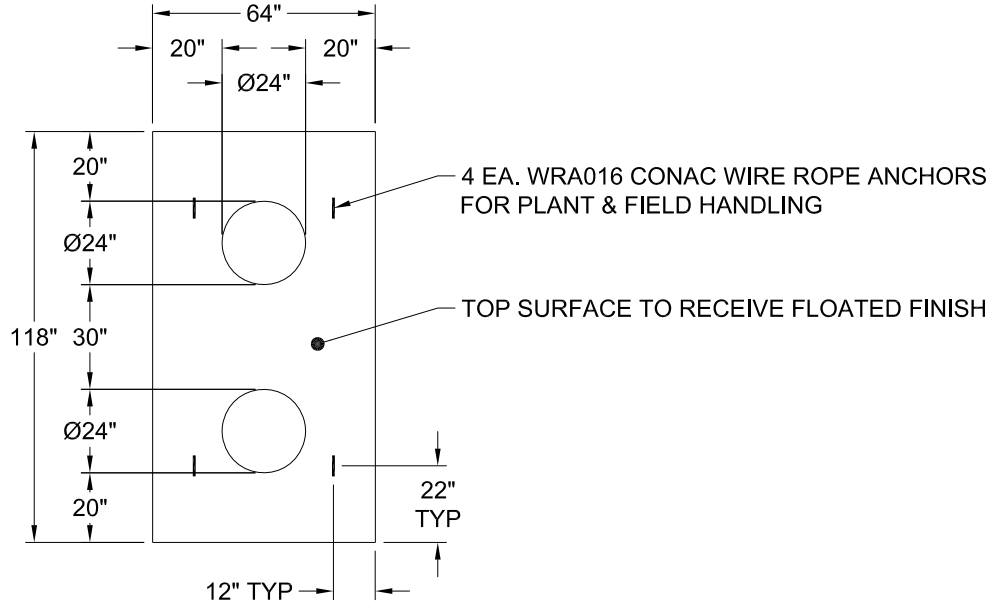
P2 BX048102-08LD08S

BX FLAT LID 8inW w/(2) 24" HOLES F/F

- P3) 24" - CASTING HEIGHT - 7"
- P2) 48" x 102" - BX FLAT LID 8inW w/(2) 24" HOLES F/F - 8"
- P1) 48" x 102" - BOX BASE 8inW, 8inF, Variable Ht F/n - 47"
- 1) WEIR WALL POUR
- 1) SECONDARY POUR
- 1) Hole - 38
- 1) Hole - 10
- 1) Hole - 30
- 1) Hole - 24

0 lb
 4766 lb
 13944 lb
 645 lb
 0 lb
 0 lb
 0 lb
 0 lb
 0 lb
 0 lb
 Structure Total: 19355 lb

- Structure Notes:**
 PLAN LABEL: OCS
1. PER ASTM C-913 SPECS
 2. CONCRETE: 4,000 PSI AT 28 DAYS
 3. REINFORCEMENT: #5 BAR @ 6" C.C. E.W. (GRADE 60) - 2" MIN. REBAR CLEARANCE (TYP)
 4. 2 EA. 7" CASTINGS SUPPLIED BY OTHERS
 5. WEIR WALL TRASH RACK SUPPLIED BY OTHERS
 6. LIFTERS: 4 EA. WRA016 CONAC WIRE ROPE ANCHORS FOR PLANT & FIELD HANDLING



Coating (Int): Coating (Ext):	Seam Up: Flat Seam Dn: Flat	Wall Thickness: 8"	Height (Ext): 8"	Weight (Net): 4766 lb Volume (Net): 1.22cu.yd
----------------------------------	--------------------------------	--------------------	------------------	--