

Job Name: 25-3175 - MSU MDAB
Job Location: Morehead, KY 40351
Contractor: Rising Sun Development Company

PC: J. Jarvis
 TECH: K. Cardwell
 Plant: Beaver Dam, KY



Structure ID: **MH3**
 Spec: Storm
 Type: STM.MH (Recessed pipe)
 Size: 48"

Rim: 748.01'
 Invert: 736.64'
 Rim to Invert: 11.37'

Sump: 0"
 Floor (Top): 736.64'
 Floor Height: 6"

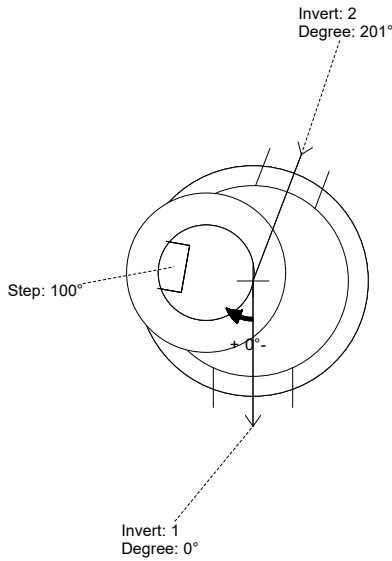
Floor (Bot): 736.14'
 Overall Height: 11.833'
 Slack: 0.44"

Structure Notes:

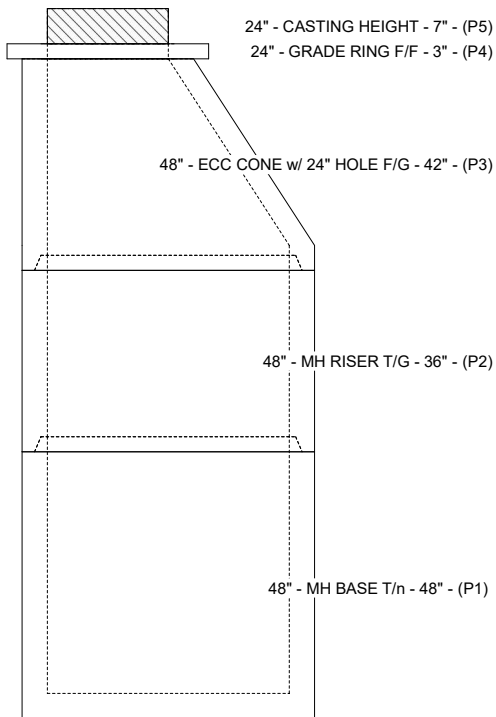
- PLAN LABEL: MH-3A
 1. PER ASTM C-478 SPECS
 2. CONCRETE: 4,000 PSI AT 28 DAYS
 3. REINFORCEMENT: PER ASTM A615
 4. STEPS AT 100 DEGREES
 5. 7" CASTING SUPPLIED BY OTHERS

STRUCTURE SUMMARY:

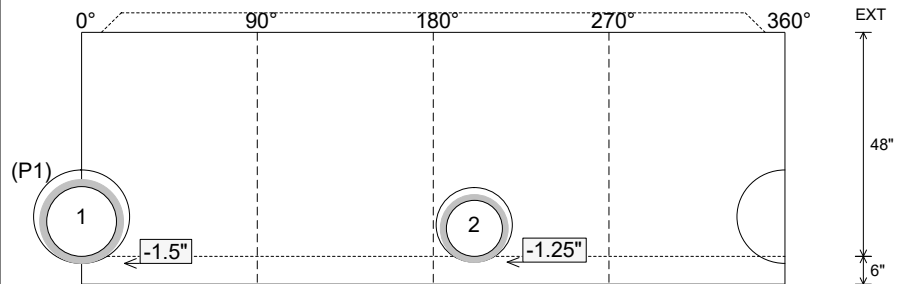
- P5) 24" - CASTING HEIGHT - 7" 0 lb
 - P4) 24" - GRADE RING F/F - 3" 202 lb
 - P3) 48" - ECC CONE w/ 24" HOLE F/G - 42" 3200 lb
 - P2) 48" - MH RISER T/G - 36" 2515 lb
 - P1) 48" - MH BASE T/n - 48" 4462 lb
 - 2) 48" - Conseal CS-102 1.00" 0 lb
 - 1) Hole - 20 0 lb
 - 1) Hole - 16 0 lb
 - 11) MH Step ML-10-TDS-NCR - 10" 0 lb
- Structure Total: 10380 lb



Position	Elev	Angle	Pipe	Pipe OD	Hole	Connector	Up (")	Ref
Rim	748.01'							
Reducer								
Invert 1	736.64'	0°	15" ADS N-12	18"	20"	Hole 20	-1.5"	P1
Invert 2	736.64'	201°	12" ADS N-12	14.5"	16"	Hole 16	-1.25"	P1
Invert 3								
Invert 4								
Invert 5								
Invert 6								
Invert 7								
Invert 8								



Cast (Int. Dim.) - Interior Dimensions



Submittal Drawing
 10/29/2025 11:02:30 AM

SUBMITTAL
 APPROVED BY: