

Job Name: 25-3175 - MSU MDAB  
 Job Location: Morehead, KY 40351  
 Contractor: Rising Sun Development Company

Plant: Beaver Dam, KY  
 10/28/2025 8:31:02 PM

Tech: K. Cardwell  
 PC: J. Jarvis



**Structure ID: MH2**

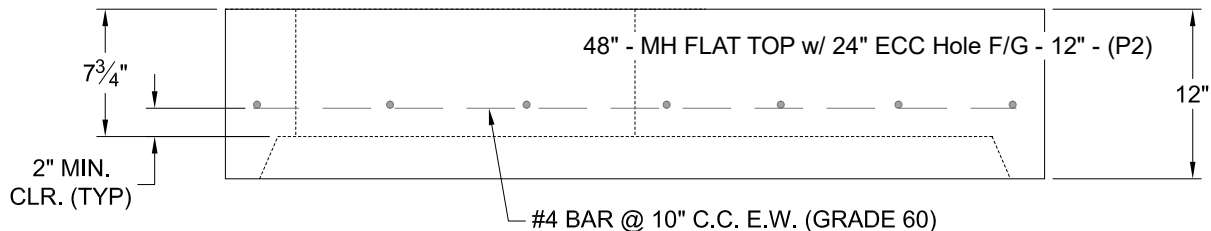
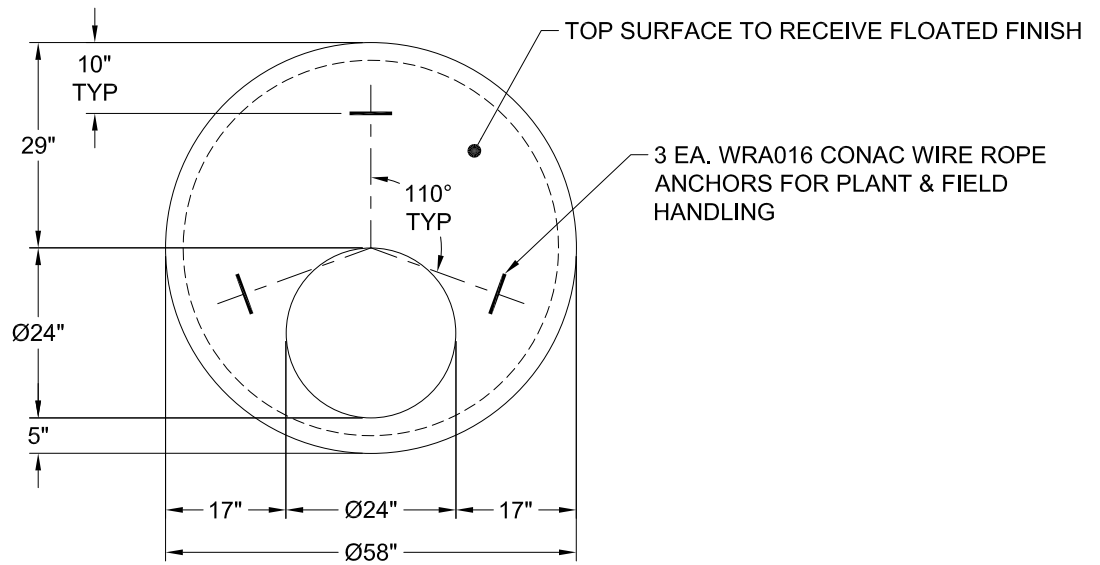
**P2 MH048LD12ECC**

**MH FLAT TOP w/ 24" ECC Hole F/G**

- P3) 24" - CASTING HEIGHT - 7"
- P2) 48" - MH FLAT TOP w/ 24" ECC Hole F/G - 12"
- P1) 48" - MH BASE T/n - 36"
- 1) 48" - Conseal CS-102 1.00"
- 3) Hole - 20
- 3) MH Step ML-10-TDS-NCR - 10"

	0 lb
	1561 lb
	3439 lb
	0 lb
	0 lb
	0 lb
Structure Total:	5000 lb

- Structure Notes:  
 PLAN LABEL: MH-2A
1. PER ASTM C-478 SPECS
  2. CONCRETE: 4,000 PSI AT 28 DAYS
  3. REINFORCEMENT: #4 BAR @ 10" C.C. E.W. (GRADE 60) - 2" MIN. REBAR CLEARANCE (TYP)
  4. STEPS AT 90 DEGREES
  5. 7" CASTING SUPPLIED BY OTHERS
  6. LIFTERS: 3 EA. WRA016 CONAC WIRE ROPE ANCHORS FOR PLANT & FIELD HANDLING



Coating (Int):  
 Coating (Ext):

Seam Up: Flat  
 Seam Dn: Groove

Wall Thickness: 5"

Height (Ext): 12"

Weight (Net): 1561 lb  
 Volume (Net): 0.42cu.yd