

Job Name: 25-3175 - MSU MDAB
 Job Location: Morehead, KY 40351
 Contractor: Rising Sun Development Company

Plant: Beaver Dam, KY
 10/28/2025 8:31:03 PM

Tech: K. Cardwell
 PC: J. Jarvis



Structure ID: MH1

P2 MH072LD10-24ECC

MH FLAT LID w/24in ECC Hole F/F

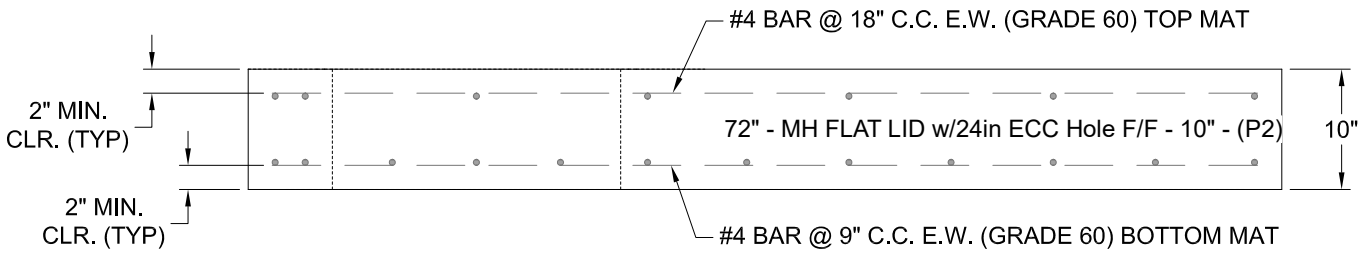
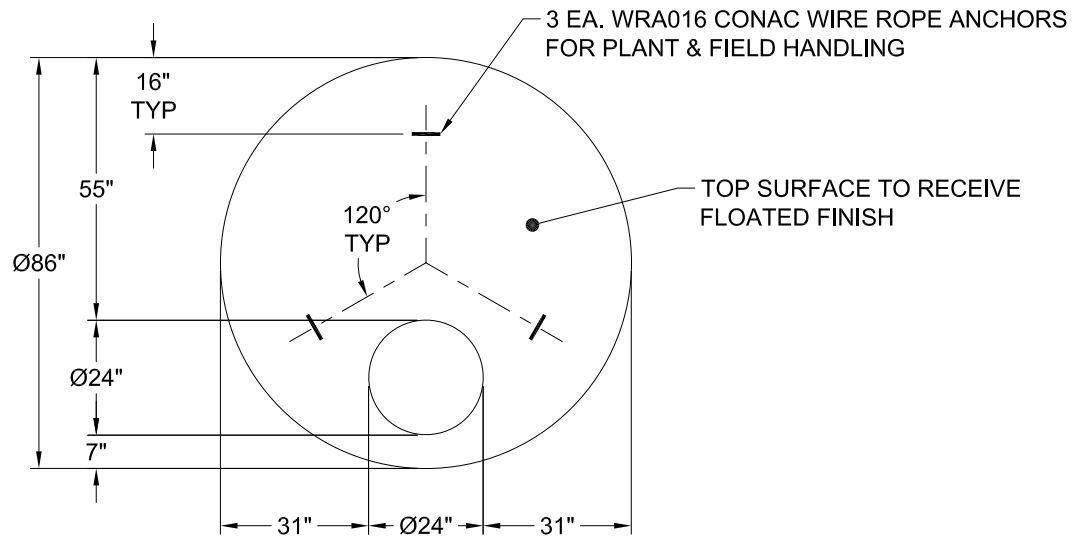
- P3) 24" - CASTING HEIGHT - 7"
- P2) 72" - MH FLAT LID w/24in ECC Hole F/F - 10"
- P1) 72" - MH BASE Custom Ht F/n - 67"
- 1) 72" - Conseal CS-102 1.00"
- 1) Hole - 30
- 2) Hole - 24
- 2) Hole - 20
- 4) MH Step ML-10-TDS-NCR - 10"

0 lb
 4495 lb
 12301 lb
 0 lb
 0 lb
 0 lb
 0 lb
 0 lb

 16796 lb

Structure Total:

- Structure Notes:**
 PLAN LABEL: MH-1A
1. PER ASTM C-478 SPECS
 2. CONCRETE: 4,000 PSI AT 28 DAYS
 3. REINFORCEMENT - 2" MIN. REBAR CLEARANCE (TYP):
 - TOP MAT: #4 BAR @ 18" C.C. E.W. (GRADE 60)
 - BOTTOM MAT: #4 BAR @ 9" C.C. E.W. (GRADE 60)
 4. STEPS AT 135 DEGREES
 5. 7" CASTING SUPPLIED BY OTHERS
 6. LIFTERS: 3 EA. WRA016 CONAC WIRE ROPE ANCHORS FOR PLANT & FIELD HANDLING



Coating (Int): Coating (Ext):	Seam Up: Flat Seam Dn: Flat	Wall Thickness: 7"	Height (Ext): 10"	Weight (Net): 4495 lb Volume (Net): 1.15cu.yd
----------------------------------	--------------------------------	--------------------	-------------------	--