

Job Name: 25-3175 - MSU MDAB
Job Location: Morehead, KY 40351
Contractor: Rising Sun Development Company

PC: J. Jarvis
 TECH: K. Cardwell
 Plant: Beaver Dam, KY



Structure ID: **CB1A**
 Spec: Storm
 Type: BX 8inW, 8inF
 Size: 24" x 24"

Rim: 733.5'
 Invert: 730.31'
 Rim to Invert: 3.19'

Sump: 0"
 Floor (Top): 730.31'
 Floor Height: 8"

Floor (Bot): 729.643'
 Overall Height: 3.833'
 Slack: 0.28"

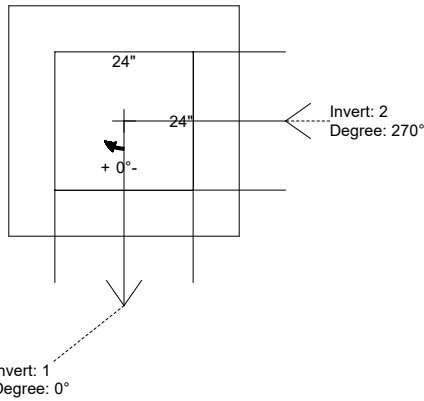
Structure Notes:
 PLAN LABEL: CB-1A
 1. PER ASTM C-913 SPECS
 2. CONCRETE: 4,000 PSI AT 28 DAYS
 3. REINFORCEMENT: #5 BAR @ 12" C.C. E.W. (GRADE 60)
 4. 4" CASTING SUPPLIED BY OTHERS

STRUCTURE SUMMARY:

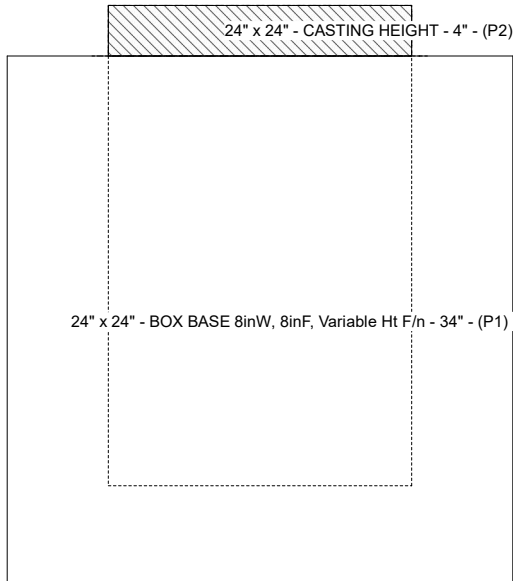
P2) 24" x 24" - CASTING HEIGHT - 4"
 P1) 24" x 24" - BOX BASE 8inW, 8inF, Variable Ht F/n - 34"
 1) 24" x 24" - Conseal CS-102 1.00"
 2) Hole - 24"

0 lb
 3540 lb
 0 lb
 0 lb

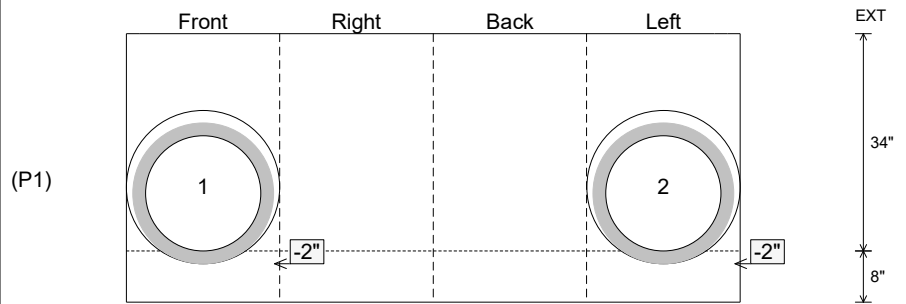
 0 lb
 Structure Total: 3540 lb



Position	Elev	Angle	Pipe	Pipe OD	Hole	Connector	Up ()	Ref
Rim	733.5'							
Reducer								
Invert 1	730.31'	0°	18" ADS N-12	22"	24"	Hole 24	-2"	P1
Invert 2	730.31'	270°	18" ADS N-12	22"	24"	Hole 24	-2"	P1
Invert 3								
Invert 4								
Invert 5								
Invert 6								
Invert 7								
Invert 8								



Cast (Int. Dim.) - Interior Dimensions



Submittal Drawing
 10/29/2025 11:02:29 AM

SUBMITTAL
 APPROVED BY: