

Job Name: 25-3170 - Publix BG
 Job Location: Bowling Green, KY
 Contractor: Scotty's Contracting & Stone, LLC

Plant: Beaver Dam, KY
 10/9/2025 7:48:41 AM

Tech: K. Cardwell
 PC: C. Goff



Structure ID: DBI6

P2 BX036036-08LD08-24x30

CB FLAT TOP 8"W w/24"x30" HOLE F/F

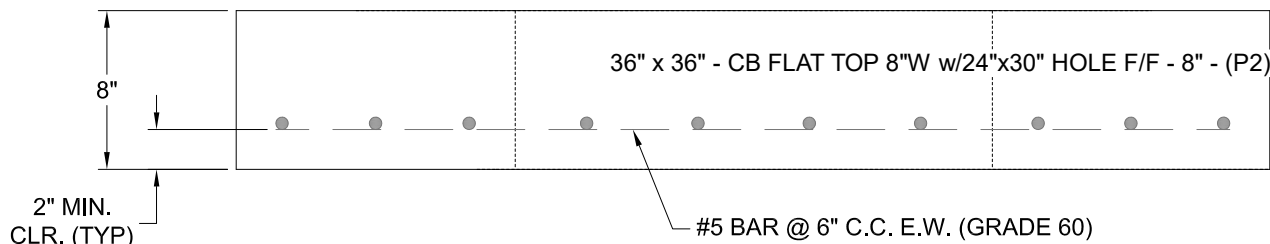
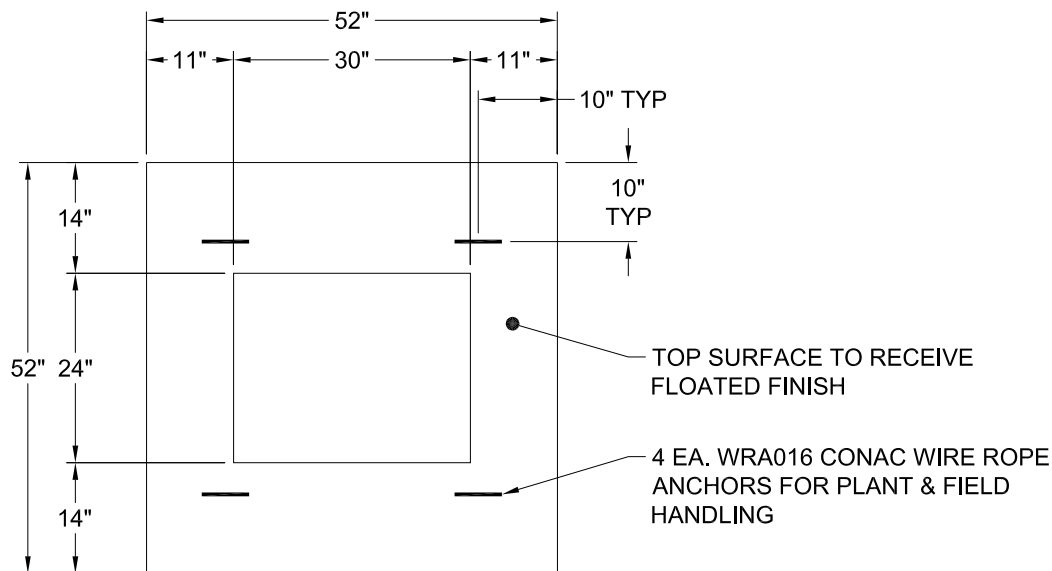
- P3) 24" x 30" - CASTING HEIGHT - 4"
- P2) 36" x 36" - CB FLAT TOP 8"W w/24"x30" HOLE F/F - 8"
- P1) 36" x 36" - BOX BASE 8inW, 8inF, Variable Ht F/n - 44"
- 1) CASTING - HOE KY-460-11 F/G (DBI 11)
- 1) 36" x 36" - Conseal CS-102 1.00"
- 1) 24" x 30" - Conseal CS-102 1.00"
- 3) Hole - 30
- 5) MH Step ML-10-TDS-NCR - 10"

0 lb
 1332 lb
 5492 lb
 421 lb
 0 lb
 0 lb
 0 lb
 0 lb

 7245 lb

Structure Total:

- Structure Notes:**
 PLAN LABEL: DBI 6
1. PER ASTM C-913 SPECS
 2. CONCRETE: 4,000 PSI AT 28 DAYS
 3. REINFORCEMENT: #5 BAR @ 6" C.C. E.W. (GRADE 60) - 2" MIN. REBAR CLEARANCE (TYP)
 4. STEPS AT 90 DEGREES
 5. KY 460 FRAME & GRATE SUPPLIED BY ICAST
 6. LIFTERS: 4 EA. WRA016 CONAC WIRE ROPE ANCHORS FOR PLANT & FIELD HANDLING



Coating (Int): Coating (Ext):	Seam Up: Flat Seam Dn: Flat	Wall Thickness: 8"	Height (Ext): 8"	Weight (Net): 1332 lb Volume (Net): 0.34cu.yd
----------------------------------	--------------------------------	--------------------	------------------	--