

Job Name: 25-3170 - Publix BG
 Job Location: Bowling Green, KY
 Contractor: Scotty's Contracting & Stone, LLC

Plant: Beaver Dam, KY
 10/9/2025 7:48:40 AM

Tech: K. Cardwell
 PC: C. Goff



Structure ID: CBI2

P2 MH060LD13-24SQ

MH FLAT TOP w/24"x24" Hole F/G

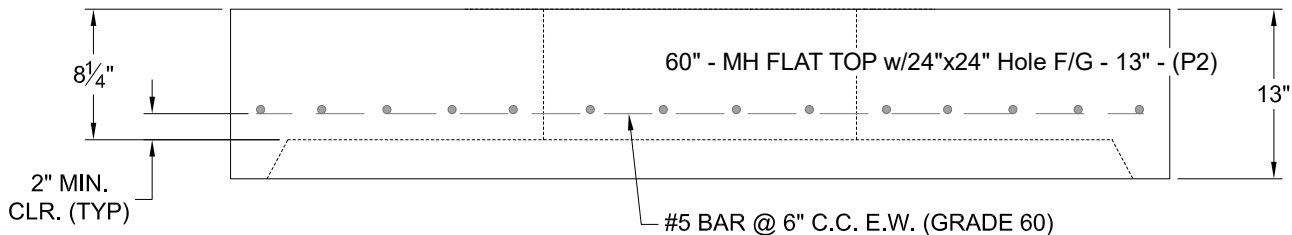
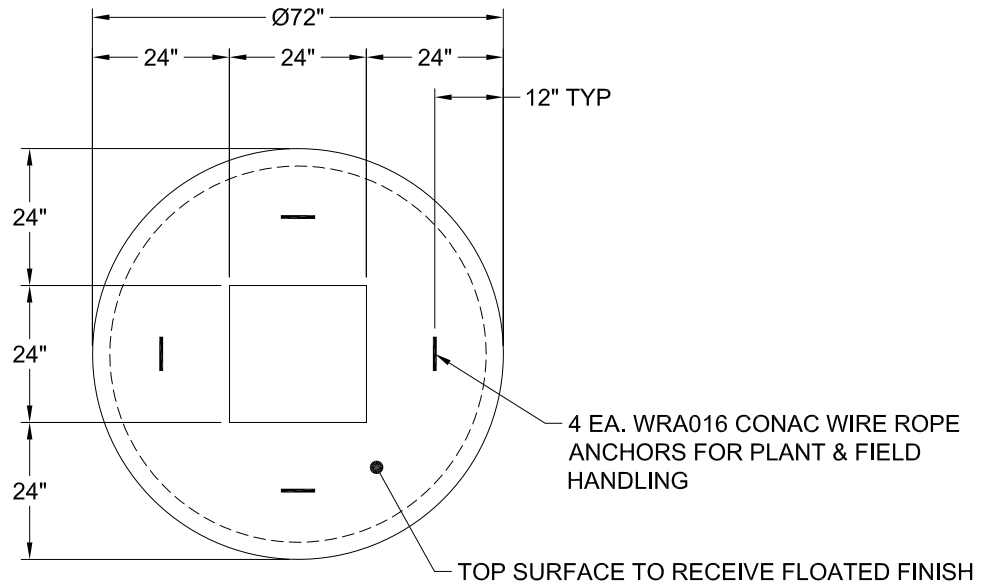
- P4) 24" x 24" - CASTING HEIGHT - 5"
- P3) 24" x 24" - GRADE RING F/F - 3"
- P2) 60" - MH FLAT TOP w/24"x24" Hole F/G - 13"
- P1) 60" - MH BASE T/n - 48"
- 1) CASTING - HOE KY-465 SET (CBI TY F)
- 1) 60" - Conseal CS-102 1.00"
- 2) 24" x 24" - Conseal CS-102 1.00"
- 1) Hole - 44
- 1) Hole - 16
- 1) Hole - 38
- 4) MH Step ML-10-TDS-NCR - 10"

0 lb
 258 lb
 2619 lb
 6190 lb
 465 lb
 0 lb
 0 lb
 0 lb
 0 lb
 0 lb
 0 lb

 9532 lb

Structure Total:

- Structure Notes:**
 PLAN LABEL: CBI 2
1. PER ASTM C-478 SPECS
 2. CONCRETE: 4,000 PSI AT 28 DAYS
 3. REINFORCEMENT: #5 BAR @ 6" C.C. E.W. (GRADE 60) - 2" MIN. REBAR CLEARANCE (TYP)
 4. STEPS AT 265 DEGREES
 5. KY 465 FRAME, GRATE, & CURB BOX SUPPLIED BY ICAST
 6. LIFTERS: 4 EA. WRA016 CONAC WIRE ROPE ANCHORS FOR PLANT & FIELD HANDLING



Coating (Int):
 Coating (Ext):

Seam Up: Flat
 Seam Dn: Groove

Wall Thickness: 6"

Height (Ext): 13"

Weight (Net): 2619 lb
 Volume (Net): 0.67cu.yd