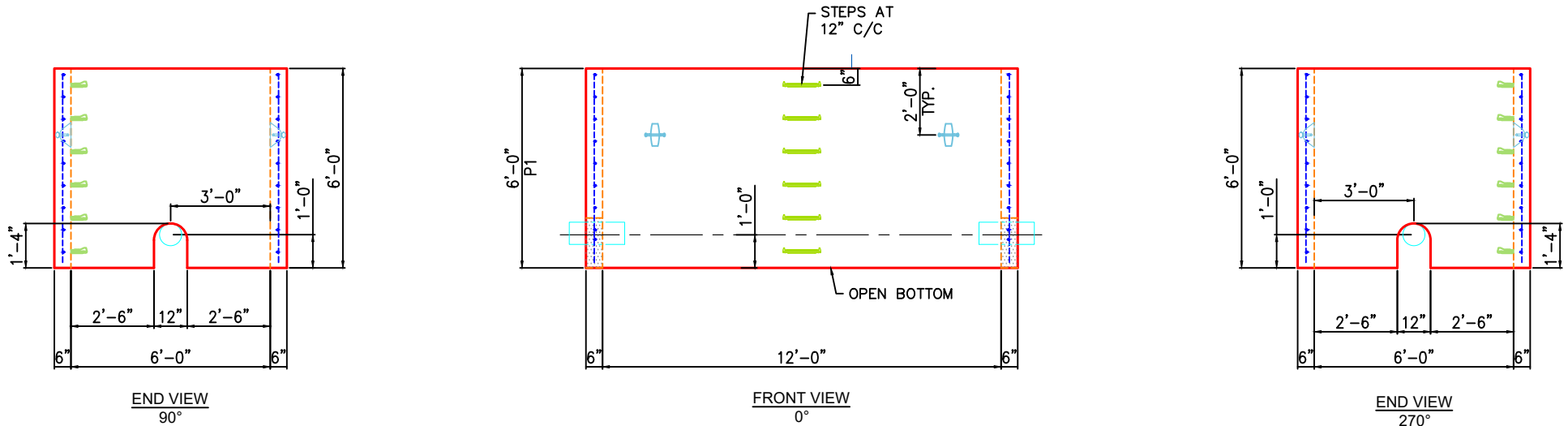
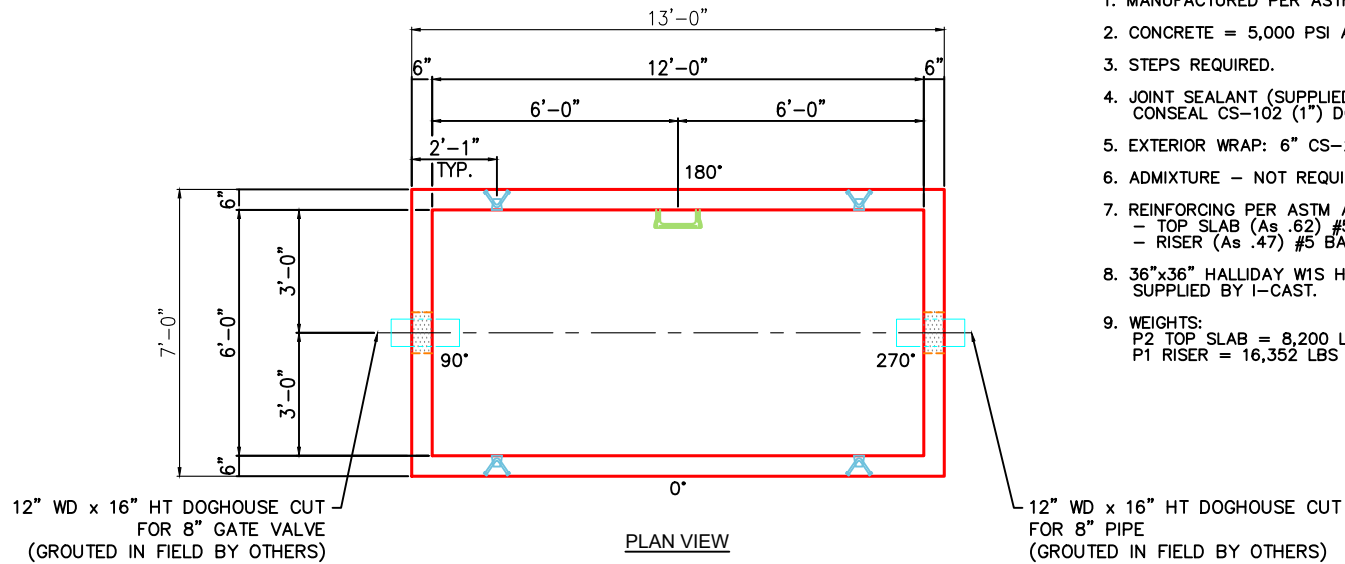


NOTES:

1. MANUFACTURED PER ASTM C913 SPECIFICATIONS.
2. CONCRETE = 5,000 PSI AT 28 DAYS.
3. STEPS REQUIRED.
4. JOINT SEALANT (SUPPLIED BY I-CAST):
CONSEAL CS-102 (1") DOUBLE.
5. EXTERIOR WRAP: 6" CS-212.
6. ADMIXTURE - NOT REQUIRED.
7. REINFORCING PER ASTM A615 (GRADE 60).
- TOP SLAB (As .62) #5 BARS AT 6" C.C.E.W
- RISER (As .47) #5 BARS AT 8" C.C.E.W.
8. 36"x36" HALLIDAY W1S HATCH WITH SKIRT FOR 8" SLAB.
SUPPLIED BY I-CAST.
9. WEIGHTS:
P2 TOP SLAB = 8,200 LBS
P1 RISER = 16,352 LBS



PRODUCTION WORK ORDER

PRODUCT I.D.: BX72144-06RVF

DESCRIPTION: RISER 72in x 144in 6inW VARIABLE HT



QUALITY CONTROL CHECKLIST

- ALL DIMENSIONS CORRECT.
- LIFTERS INSTALLED.
- STEPPED HF CORRECT SIZE.
- REINFORCING CORRECT.
- SURFACE QUALITY ACCEPTABLE.
- EDGES CHAMFERED.
- ALL PATCHWORK ACCEPTABLE.

PRODUCT VIEW: RIGHT-SIDE UP

CUSTOMER: CORE & MAIN LP (BG)

PLANT: BEAVER DAM, KY.

PROJECT: BELMARK VAULT

WEIGHT: 16,328 LBS.

STRUCTURE ID.: VAULT 8in (144x72)

TOP SECTION JOINT: FLAT

SALES ORDER NO: 25-3165

BASE SECTION JOINT: FLAT

CHECK: B. SMITH

DRAWING: J. HORSLEY

QC CHECK INITIALS:

DATE: 11/05/25

SCALE: NTS

PG. 1 of 1