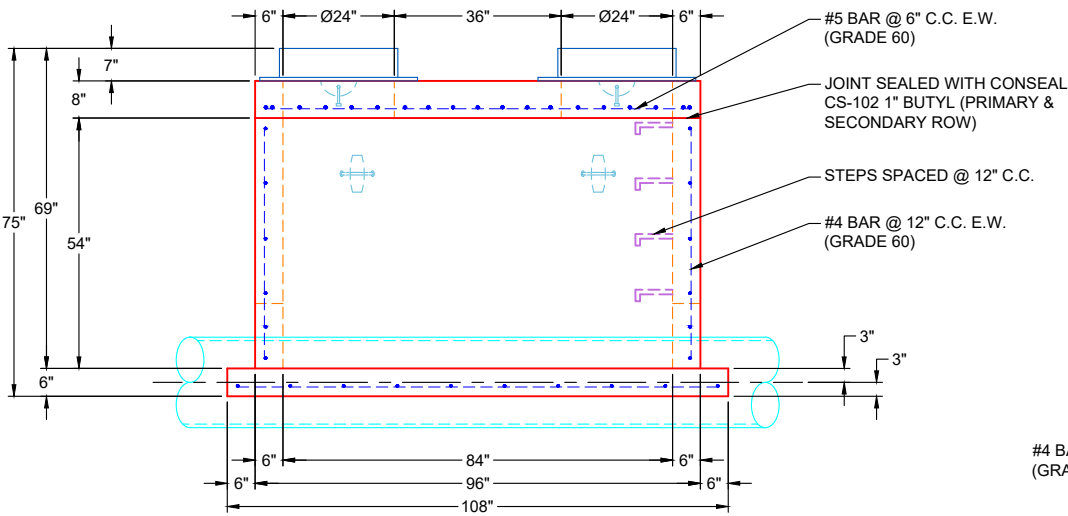
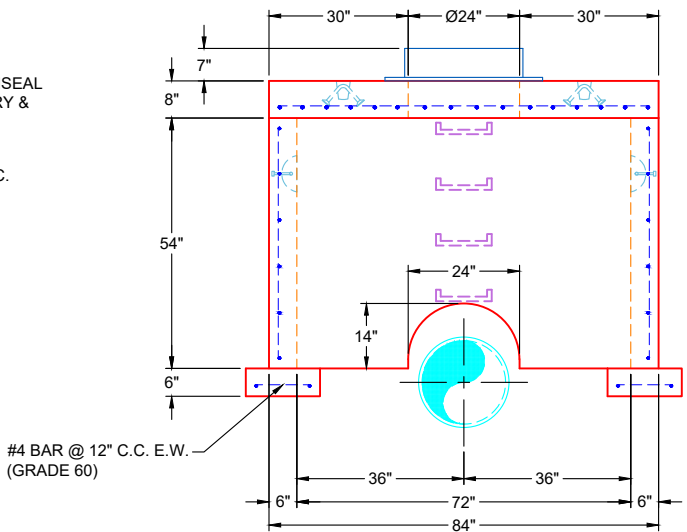


PLAN VIEW



VIEW A



VIEW B

GENERAL NOTES:

1. MANUFACTURED PER ASTM C-913 SPECIFICATIONS
2. CONCRETE: 5,000 PSI AT 28 DAYS
3. REINFORCEMENT:
 - FLAT LID: #5 BAR @ 6" C.C. E.W. (GRADE 60)
 - RISER: #4 BAR @ 12" C.C. E.W. (GRADE 60)
 - CONCRETE FOOTERS: #4 BAR @ 12" C.C. E.W. (GRADE 60)
4. WEIGHTS:

8" FLAT LID	4,806 LBS
54" RISER (6" WALLS)	8,859 LBS
108" X 16" X 6" CONCRETE FOOTERS	1,740 LBS (870 LBS EACH)
TOTAL WEIGHT	15,405 LBS
5. CONTRACTOR TO VERIFY ALL DIMENSIONS BEFORE MANUFACTURING
6. 2 EA. 7" CASTINGS SUPPLIED BY OTHERS
7. JOINT SEALANT: CONSEAL CS-102 - 1" BUTYL (PRIMARY & SECONDARY ROWS)
8. MANHOLE STEPS REQUIRED

REVISION INFORMATION	
REV. DATE:	NO REVISIONS TO DATE



SUBMITTAL DRAWING: 72" X 84" AIR RELEASE VAULT		
CUSTOMER: LYKINS CONTRACTING		
PROJECT: W6 PH 2-C FORCE MAIN IMPROVEMENTS		
STRUCTURE: ARV4		
QUOTE/SALES ORDER NO: 25-3118		
CHECKED BY: B. SMITH	DRAWN BY: ADVENSER	
DATE: 03/20/26	SCALE: NTS	PG. 1 OF 1