

Job Name: 25-3118 - W6 Ph 2-C Force Main Improvements  
 Job Location: Fort Mitchell, KY 41017  
 Contractor: Lykins Contracting

Plant: 100

Tech: J. Horsley - A

3/20/2026 1:22:28 PM

PC: Celina Goff



**Structure ID: ARV3**

**P1 CFB**

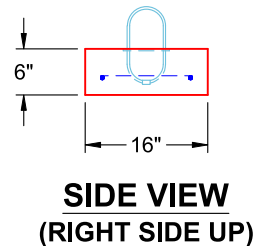
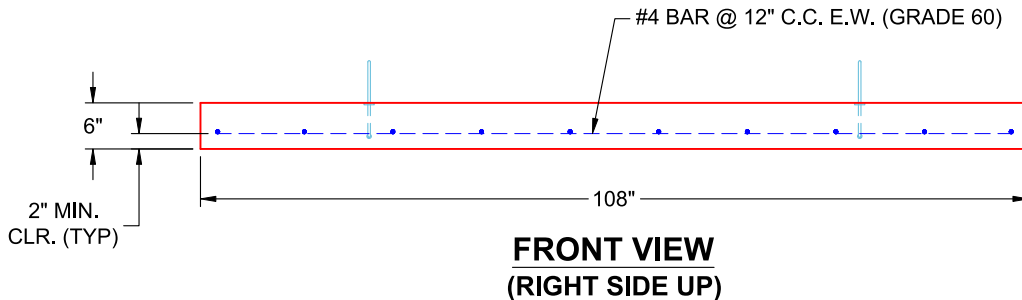
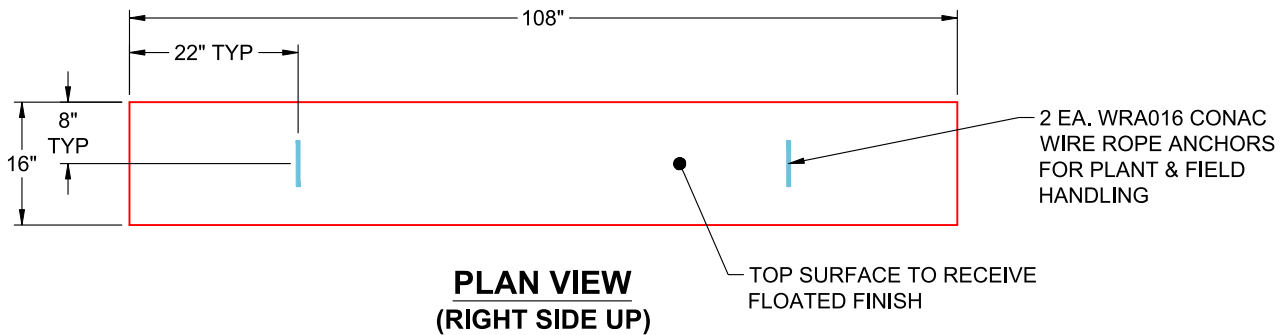
**108" X 16" X 6" Footer Blocks - 2 Ea. F/n**

P4) 24" - CASTING HEIGHT - 7"	0 lb
P3) 72" x 84" - CB FLAT TOP 6"W w/(2) 24" HOLES F/F - 8"	4806 lb
P2) 72" x 84" - BOX RISER 6inW, Variable Ht F/F - 54"	8859 lb
P1) 72" x 84" - 108" X 16" X 6" Footer Blocks - 2 Ea. F/n - 6"	1740 lb (870 lb Ea.)
2) 72" x 84" - Conseal CS-102 1.00" (Double)	0 lb
2) DOGHOUSE - 24"x14	0 lb
6) MH Step ML-10-TDS-NCR - 10"	0 lb
<b>Structure Total:</b>	<b>15405 lb</b>

- Structure Notes:
1. PER ASTM C-913 SPECIFICATIONS
  2. CONCRETE: 4,000 PSI AT 28 DAYS
  3. REINFORCEMENT: #4 BAR @ 12" C.C. E.W. (GRADE 60) - 2" MIN. REBAR CLEARANCE (TYP)
  4. LIFTERS: 2 EA. WRA016 CONAC WIRE ROPE ANCHORS FOR PLANT & FIELD HANDLING
  5. TOP SURFACE TO RECEIVE FLOATED FINISH

Rim: 5.75' Rim to Invert: 5.75' Slack: 0" Sump: 0" Step Position: 180°

**2 EA. FOOTER BLOCKS REQUIRED PER ARV**



Coating (Int):  
Coating (Ext):

Seam Up: Flat  
Seam Dn: n/a

Wall Thickness: 6"  
Floor Height: 6"

Height (Int): 0"  
Height (Ext): 0"

Weight (Net): 870 lb  
Volume (Net): 0.22cu.yd