

Job Name: 25-3118 - W6 Ph 2-C Force Main Improvements
 Job Location: Fort Mitchell, KY 41017
 Contractor: Lykins Contracting

Plant: 100

Tech: J. Horsley - A

3/20/2026 1:22:23 PM

PC: Celina Goff



Structure ID: 2301581

P1 MH048BAVF-D

MH BASE (10" F) w/DROP Custom Ht T/n

- P6) 24" - CASTING HEIGHT - 7"
- P5) 48" - CON CONE w/24" HOLE F/G - 36"
- P4) 48" - MH RISER T/G - 48"
- P3) 48" - MH RISER T/G - 48"
- P2) 48" - MH RISER w/DROP Custom Ht T/G - 72"
- P1) 48" - MH BASE (10" F) w/DROP Custom Ht T/n - 28"
- 1) 60" - MH INVERT CHANNEL - FULL HEIGHT
- 4) 48" - Conseal CS-102 1.00" (Double)
- 1) PSX - 12-08 NYLO
- 1) Drop Tee - 8" PVC
- 1) Drop Elbow - 8" PVC
- 19) MH Step ML-10-TDS-NCR - 10"

- 0 lb
- 2252 lb
- 3353 lb
- 3353 lb
- 8102 lb
- 7371 lb
- 2692 lb
- 0 lb
- 8 lb
- 0 lb
- 0 lb
- 0 lb
- 0 lb

Structure Total: 27131 lb

Structure Notes:

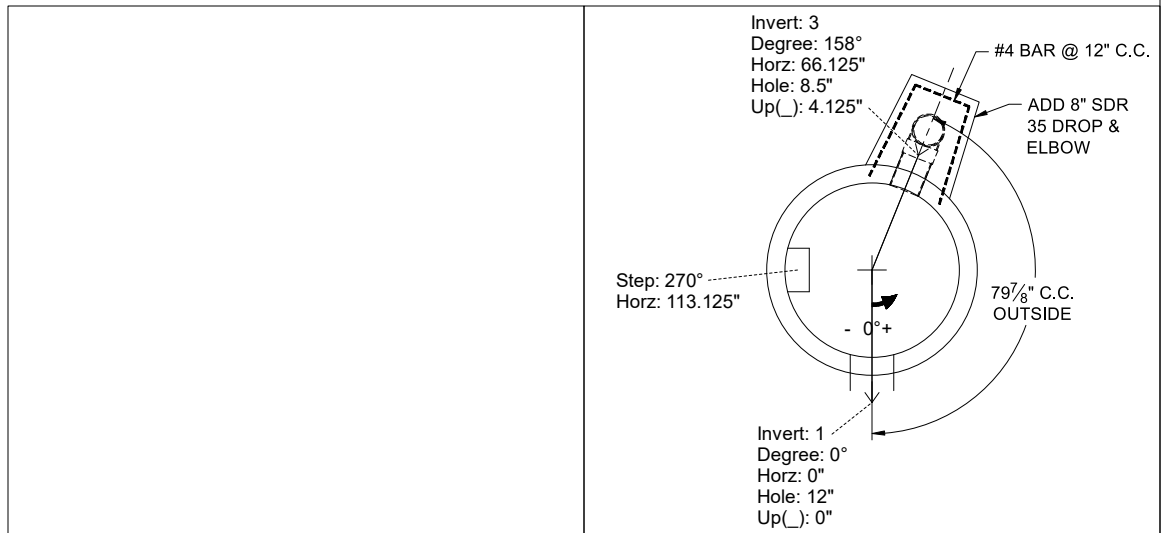
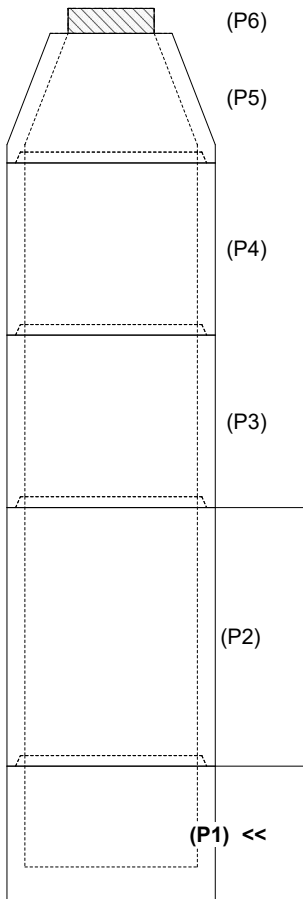
1. PER ASTM C-478 SPECIFICATIONS
2. CONCRETE: 4,000 PSI AT 28 DAYS
3. BASE REINFORCEMENT:
 - WALLS: PER ASTM A615 - DOUBLE MAT
 - FLOOR: #5 BAR @ 12" C.C. E.W. (GRADE 60) - 2" MIN. REBAR CLEARANCE (TYP)
4. EXTERIOR DROP REINFORCEMENT: #4 BAR @ 12" C.C. E.W. (GRADE 60) - 2" MIN. REBAR CLEARANCE (TYP)
5. INVERT CHANNEL REQUIRED
6. STEPS AT 270 DEGREES
7. 7" CASTING SUPPLIED BY OTHERS
8. EXTERIOR DROP AT INVERTS 2 & 3 SUPPLIED BY ICAST
9. ADD 8" SDR 35 DROP & ELBOW AT INVERT 3 (158°)

Rim: 766.6' Rim to Invert: 19.97' Slack: 2.64" Sump: 2" Step Position: 270°

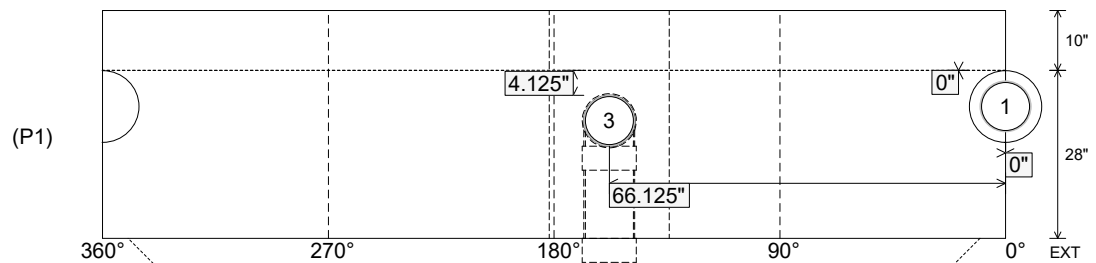
Position	Elev	Angle	Ext. (cw)	Pipe	Pipe OD	Connector	Hole	Horz Size	Up ()	Offset
Invert 1	746.63'	0°	0"	8" PVC SDR35	8.5"	PSX 12-08 NYLO	12"	12.129"	0"	0"
Invert 2										
Invert 3	746.83'	158°	80"	8" PVC SDR35	8.5"	Drop Elbow 8" PVC	8.5"	8.545"	4.125"	0"
Invert 4										
Invert 5										
Invert 6										
Invert 7										
Invert 8										

RIGHT-SIDE UP VIEW (int. dimensions)

UPSIDE-DOWN VIEW (int. dimensions)



INSIDE WALL DIMENSIONS



Coating (Int):
Coating (Ext):

Seam Up: Tongue
Seam Dn: n/a

Wall Thickness: 5"
Floor Height: 10"

Height (Int): 28"
Height (Ext): 38"

Weight (Net): 5737 lb
Volume (Net): 1.46cu.yd

Job Name: 25-3118 - W6 Ph 2-C Force Main Improvements
 Job Location: Fort Mitchell, KY 41017
 Contractor: Lykins Contracting

Plant: 100

Tech: J. Horsley - A

3/20/2026 1:22:23 PM

PC: Celina Goff



Structure ID: 2301581

P1 MH048BAVF-D

MH BASE (10" F) w/DROP Custom Ht T/n

- P6) 24" - CASTING HEIGHT - 7"
- P5) 48" - CON CONE w/24" HOLE F/G - 36"
- P4) 48" - MH RISER T/G - 48"
- P3) 48" - MH RISER T/G - 48"
- P2) 48" - MH RISER w/DROP Custom Ht T/G - 72"
- P1) 48" - MH BASE (10" F) w/DROP Custom Ht T/n - 28"
- 1) 60" - MH INVERT CHANNEL - FULL HEIGHT
- 4) 48" - Conseal CS-102 1.00" (Double)
- 1) PSX - 12-08 NYLO
- 1) Drop Tee - 8" PVC
- 1) Drop Elbow - 8" PVC
- 19) MH Step ML-10-TDS-NCR - 10"

0 lb
 2252 lb
 3353 lb
 3353 lb
 8102 lb
 7371 lb
 2692 lb
 0 lb
 8 lb
 0 lb
 0 lb
 0 lb
 0 lb

 Structure Total: 27131 lb

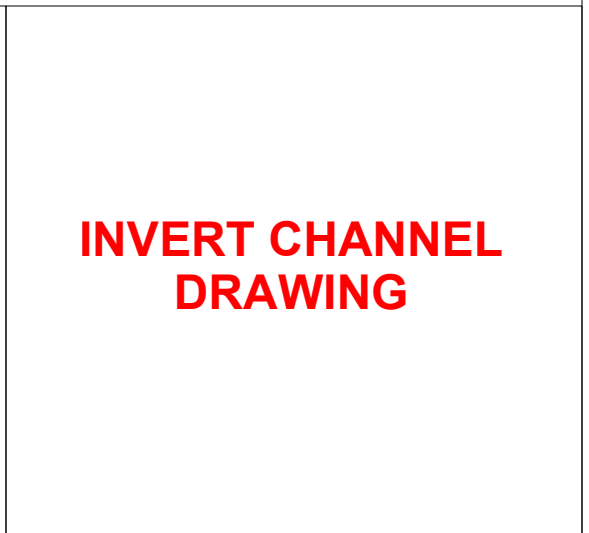
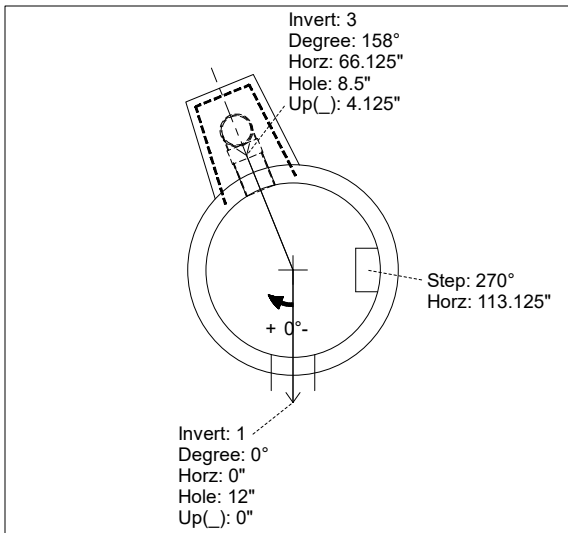
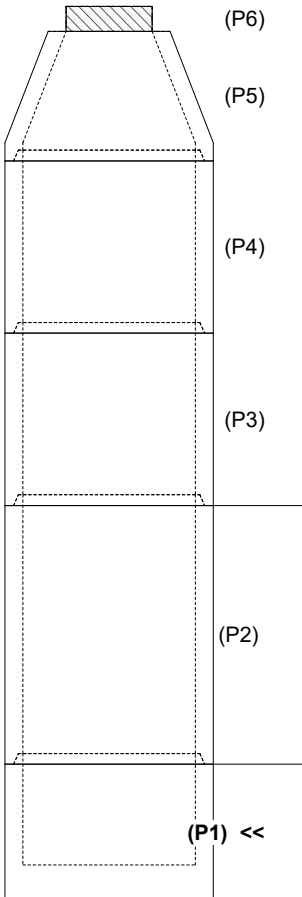
- Structure Notes:**
1. PER ASTM C-478 SPECIFICATIONS
 2. CONCRETE: 4,000 PSI AT 28 DAYS
 3. REINFORCEMENT:
 - WALLS: PER ASTM A615 - DOUBLE MAT
 - FLOOR: #5 BAR @ 12" C.C. E.W. (GRADE 60) - 2" MIN. REBAR CLEARANCE (TYP)
 4. INVERT CHANNEL REQUIRED
 5. STEPS AT 270 DEGREES
 6. 7" CASTING SUPPLIED BY OTHERS
 7. EXTERIOR DROP AT INVERTS 2 & 3 SUPPLIED BY ICAST

Rim: 766.6' Rim to Invert: 19.97' Slack: 2.64' Sump: 2' Step Position: 270°

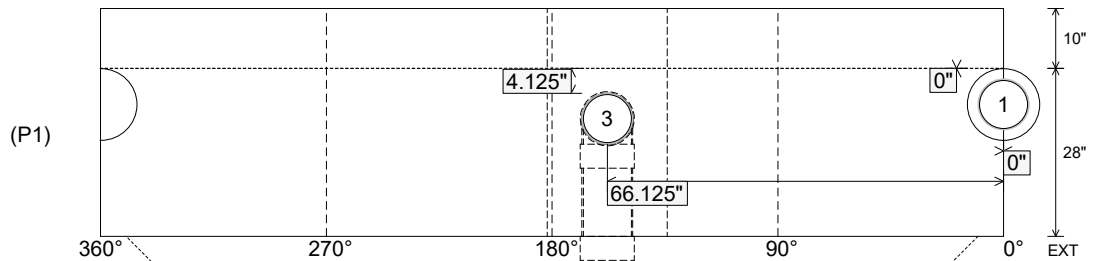
Position	Elev	Angle	Ext. (cw)	Pipe	Pipe OD	Connector	Hole	Horz Size	Up ()	Offset
Invert 1	746.63'	0°	0"	8" PVC SDR35	8.5"	PSX 12-08 NYLO	12"	12.129"	0"	0"
Invert 2										
Invert 3	746.83'	158°	80"	8" PVC SDR35	8.5"	Drop Elbow 8" PVC	8.5"	8.545"	4.125"	0"
Invert 4										
Invert 5										
Invert 6										
Invert 7										
Invert 8										

RIGHT-SIDE UP VIEW (int. dimensions)

UPSIDE-DOWN VIEW (int. dimensions)



INSIDE WALL DIMENSIONS



Coating (Int):
 Coating (Ext):

Seam Up: Tongue
 Seam Dn: n/a

Wall Thickness: 5"
 Floor Height: 10"

Height (Int): 28"
 Height (Ext): 38"

Weight (Net): 5737 lb
 Volume (Net): 1.46cu.yd