

Job Name: 25-3118 - W6 Ph 2-C Force Main Improvements
 Job Location: Fort Mitchell, KY 41017
 Contractor: Lykins Contracting

Plant: 100

3/20/2026 1:21:53 PM

Tech: J. Horsley - A

PC: Celina Goff



Structure ID: 2301565

P1 MH060DPVF

MH BASE w/DROP Custom Ht T/n

- P6) 24" - CASTING HEIGHT - 7"
- P5) 24" - GRADE RING F/F - 3"
- P4) 48" - CON CONE w/24" HOLE F/G - 36"
- P3) 48" - MH RISER T/G - 48"
- P2) 60" - MH Transition Slab 48" Hole T/G - 15"
- P1) 60" - MH BASE w/DROP Custom Ht T/n - 72"
- 1) 60" - MH INVERT CHANNEL - FULL HEIGHT
- 1) SECONDARY POUR - Add Exterior Drop to Base (P1)
- 1) 60" - Conseal CS-102 1.00" (Double)
- 2) 48" - Conseal CS-102 1.00" (Double)
- 2) A-Lok - 1235
- 1) Drop Tee - 8" PVC
- 1) Drop Elbow - 8" PVC
- 13) MH Step ML-10-TDS-NCR - 10"

- Structure Notes:**
1. PER ASTM C-478 SPECIFICATIONS
 2. CONCRETE: 4,000 PSI AT 28 DAYS
 3. REINFORCEMENT:
 - WALLS: PER ASTM A615 - DOUBLE MAT
 - FLOOR: #5 BAR @ 12" C.C. E.W. (GRADE 60) - 2" MIN. REBAR CLEARANCE (TYP)
 4. INVERT CHANNEL REQUIRED
 5. STEPS AT 75 DEGREES
 6. 7" CASTING SUPPLIED BY OTHERS
 7. EXTERIOR DROP AT INVERTS 2 & 4 SUPPLIED BY ICAST

0 lb
202 lb
2252 lb
3353 lb
2204 lb
8838 lb
2692 lb
3440 lb
0 lb
0 lb
2 lb
0 lb
0 lb
0 lb
0 lb

Structure Total: 22984 lb

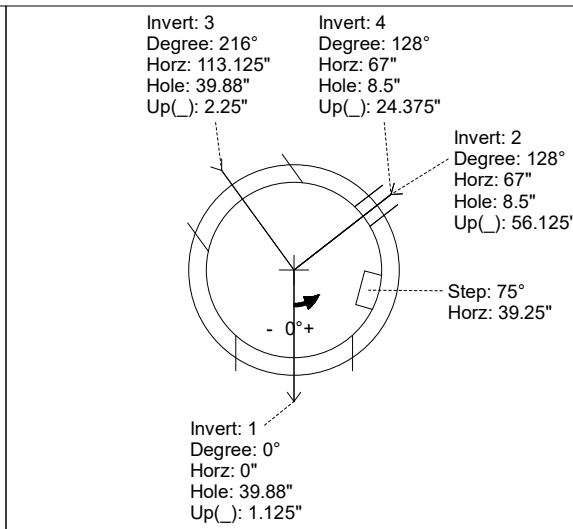
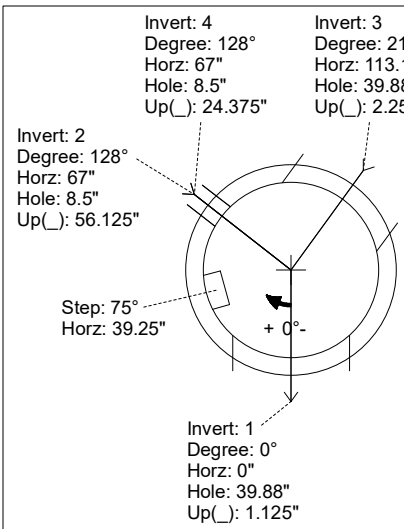
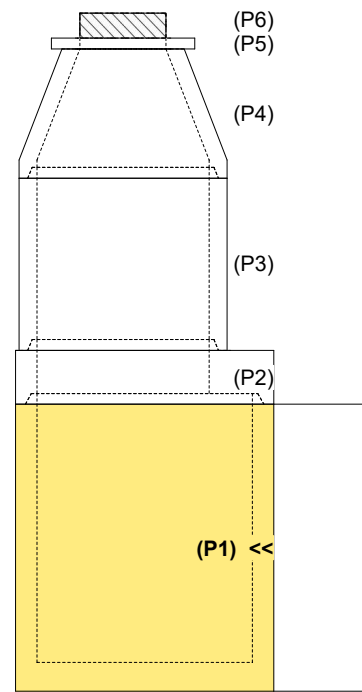
FIRST POUR (BASE): 8,838 LBS
SECOND POUR (DROP): 3,440 LBS

Rim: 760.2' Rim to Invert: 14.96' Slack: 1.52" Sump: 3" Step Position: 75°

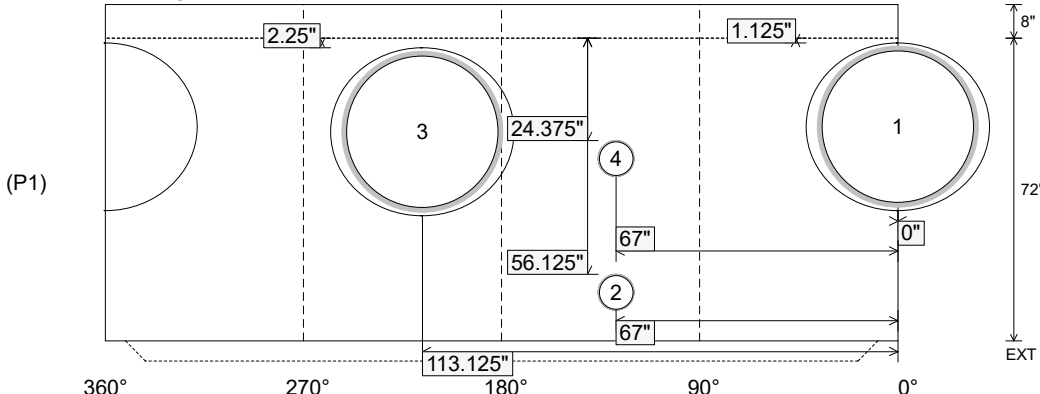
Position	Elev	Angle	Ext. (cw)	Pipe	Pipe OD	Connector	Hole	Horz Size	Up ()	Offset
Invert 1	745.24'	0°	0"	36" PVC SDR35/F679	38.3"	A-Lok 1235	39.88"	43.623"	1.125"	0"
Invert 2	749.69'	128°	80.375"	8" PVC SDR35	8.5"	Drop Tee 8" PVC	8.5"	8.529"	56.125"	0"
Invert 3	745.34'	216°	135.75"	36" PVC SDR35/F679	38.3"	A-Lok 1235	39.88"	43.623"	2.25"	0"
Invert 4	747.04'	128°	80.375"	8" PVC SDR35	8.5"	Drop Elbow 8" PVC	8.5"	8.529"	24.375"	0"
Invert 5										
Invert 6										
Invert 7										
Invert 8										

RIGHT-SIDE UP VIEW (int. dimensions)

UPSIDE-DOWN VIEW (int. dimensions)



INSIDE WALL DIMENSIONS



Coating (Int): Coating (Ext):	Seam Up: Tongue Seam Dn: n/a	Wall Thickness: 6" Floor Height: 8"	Height (Int): 72" Height (Ext): 80"	Weight (Net): 8838 lb Volume (Net): 2.26cu.yd
----------------------------------	---------------------------------	--	--	--

Job Name: 25-3118 - W6 Ph 2-C Force Main Improvements
 Job Location: Fort Mitchell, KY 41017
 Contractor: Lykins Contracting

Plant: 100

3/20/2026 1:21:53 PM

Tech: J. Horsley - A

PC: Celina Goff



Structure ID: 2301565

P1 MH060DPVF

MH BASE w/DROP Custom Ht T/n

- P6) 24" - CASTING HEIGHT - 7"
- P5) 24" - GRADE RING F/F - 3"
- P4) 48" - CON CONE w/24" HOLE F/G - 36"
- P3) 48" - MH RISER T/G - 48"
- P2) 60" - MH Transition Slab 48" Hole T/G - 15"
- P1) 60" - MH BASE w/DROP Custom Ht T/n - 72"
- 1) 60" - MH INVERT CHANNEL - FULL HEIGHT
- 1) SECONDARY POUR - Add Exterior Drop to Base (P1)
- 1) 60" - Conseal CS-102 1.00" (Double)
- 2) 48" - Conseal CS-102 1.00" (Double)
- 2) A-Lok - 1235
- 1) Drop Tee - 8" PVC
- 1) Drop Elbow - 8" PVC
- 13) MH Step ML-10-TDS-NCR - 10"

- 0 lb
- 202 lb
- 2252 lb
- 3353 lb
- 2204 lb
- 8838 lb
- 2692 lb
- 3440 lb
- 0 lb
- 0 lb
- 2 lb
- 0 lb
- 0 lb
- 0 lb
- 0 lb

- Structure Notes:**
1. PER ASTM C-478 SPECIFICATIONS
 2. CONCRETE: 4,000 PSI AT 28 DAYS
 3. EXTERIOR DROP REINFORCEMENT: DRILL & STUB #4 BAR @ 12" C.C. E.W. (GRADE 60) - 2" MIN. REBAR CLEARANCE (TYP)
 4. INVERT CHANNEL REQUIRED
 5. STEPS AT 75 DEGREES
 6. 7" CASTING SUPPLIED BY OTHERS
 7. EXTERIOR DROP AT INVERTS 2 & 4 SUPPLIED BY ICAST
 8. ADD 8" SDR 35 DROP, TEE AT INVERT 2 (128°), & ELBOW AT INVERT 4 (128°)

Structure Total: 22984 lb

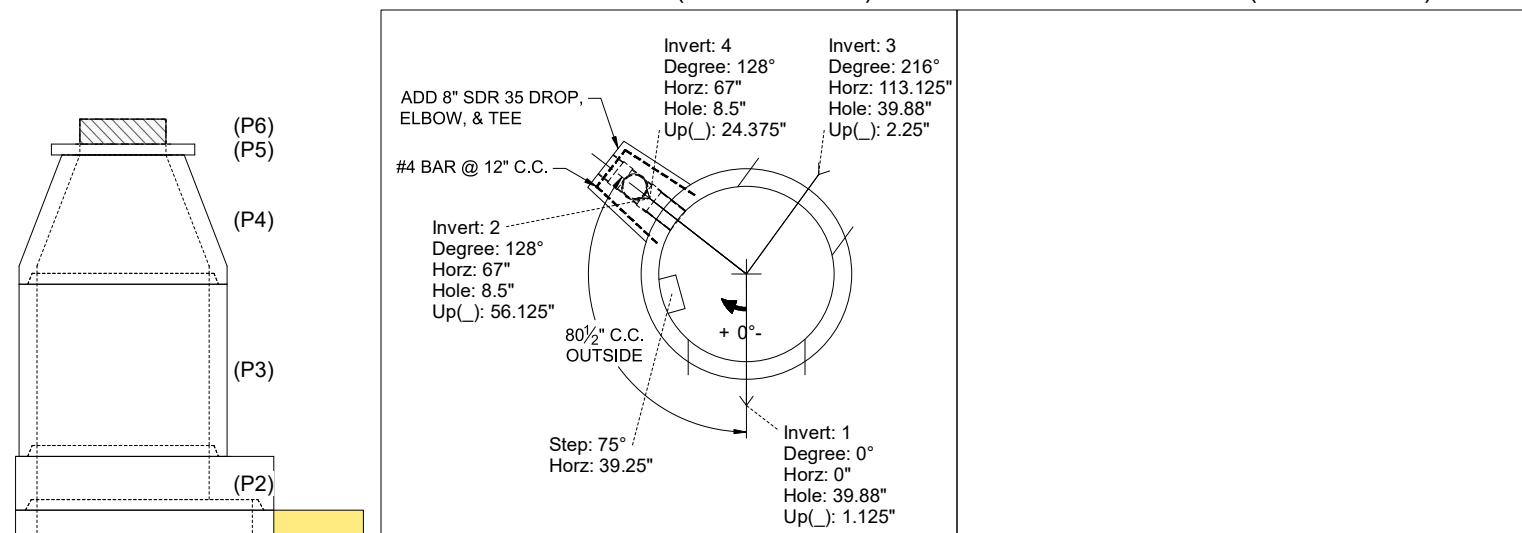
FIRST POUR (BASE): 8,838 LBS
SECOND POUR (DROP): 3,440 LBS

Rim: 760.2' Rim to Invert: 14.96' Slack: 1.52" Sump: 3" Step Position: 75°

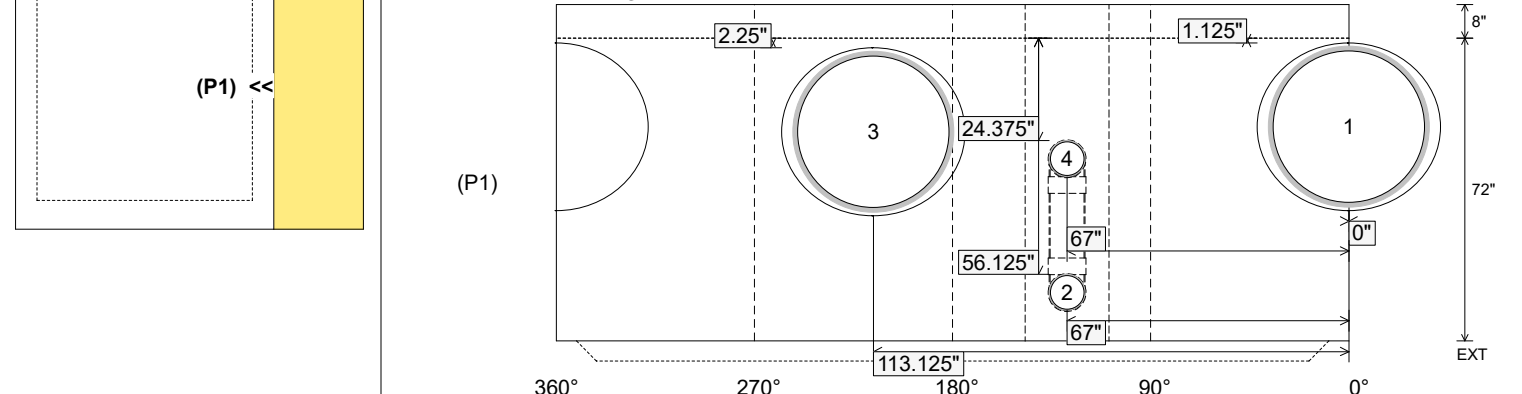
Position	Elev	Angle	Ext. (cw)	Pipe	Pipe OD	Connector	Hole	Horz Size	Up ()	Offset
Invert 1	745.24'	0°	0"	36" PVC SDR35/F679	38.3"	A-Lok 1235	39.88"	43.623"	1.125"	0"
Invert 2	749.69'	128°	80.375"	8" PVC SDR35	8.5"	Drop Tee 8" PVC	8.5"	8.529"	56.125"	0"
Invert 3	745.34'	216°	135.75"	36" PVC SDR35/F679	38.3"	A-Lok 1235	39.88"	43.623"	2.25"	0"
Invert 4	747.04'	128°	80.375"	8" PVC SDR35	8.5"	Drop Elbow 8" PVC	8.5"	8.529"	24.375"	0"
Invert 5										
Invert 6										
Invert 7										
Invert 8										

RIGHT-SIDE UP VIEW (int. dimensions)

UPSIDE-DOWN VIEW (int. dimensions)



INSIDE WALL DIMENSIONS



Coating (Int): Coating (Ext):	Seam Up: Tongue Seam Dn: n/a	Wall Thickness: 6" Floor Height: 8"	Height (Int): 72" Height (Ext): 80"	Weight (Net): 8838 lb Volume (Net): 2.26cu.yd
----------------------------------	---------------------------------	--	--	--

Job Name: 25-3118 - W6 Ph 2-C Force Main Improvements
 Job Location: Fort Mitchell, KY 41017
 Contractor: Lykins Contracting

Plant: 100

Tech: J. Horsley - A

3/20/2026 1:21:53 PM

PC: Celina Goff



Structure ID: 2301565

P1 MH060DPVF

MH BASE w/DROP Custom Ht T/n

- P6) 24" - CASTING HEIGHT - 7"
- P5) 24" - GRADE RING F/F - 3"
- P4) 48" - CON CONE w/24" HOLE F/G - 36"
- P3) 48" - MH RISER T/G - 48"
- P2) 60" - MH Transition Slab 48" Hole T/G - 15"
- P1) 60" - MH BASE w/DROP Custom Ht T/n - 72"
- 1) 60" - MH INVERT CHANNEL - FULL HEIGHT
- 1) SECONDARY POUR - Add Exterior Drop to Base (P1)
- 1) 60" - Conseal CS-102 1.00" (Double)
- 2) 48" - Conseal CS-102 1.00" (Double)
- 2) A-Lok - 1235
- 1) Drop Tee - 8" PVC
- 1) Drop Elbow - 8" PVC
- 13) MH Step ML-10-TDS-NCR - 10"

- 0 lb
- 202 lb
- 2252 lb
- 3353 lb
- 2204 lb
- 8838 lb
- 2692 lb
- 3440 lb
- 0 lb
- 0 lb
- 2 lb
- 0 lb
- 0 lb
- 0 lb
- 0 lb

- Structure Notes:**
1. PER ASTM C-478 SPECIFICATIONS
 2. CONCRETE: 4,000 PSI AT 28 DAYS
 3. REINFORCEMENT:
 - WALLS: PER ASTM A615 - DOUBLE MAT
 - FLOOR: #5 BAR @ 12" C.C. E.W. (GRADE 60) - 2" MIN. REBAR CLEARANCE (TYP)
 4. INVERT CHANNEL REQUIRED
 5. STEPS AT 75 DEGREES
 6. 7" CASTING SUPPLIED BY OTHERS
 7. EXTERIOR DROP AT INVERTS 2 & 4 SUPPLIED BY ICAST

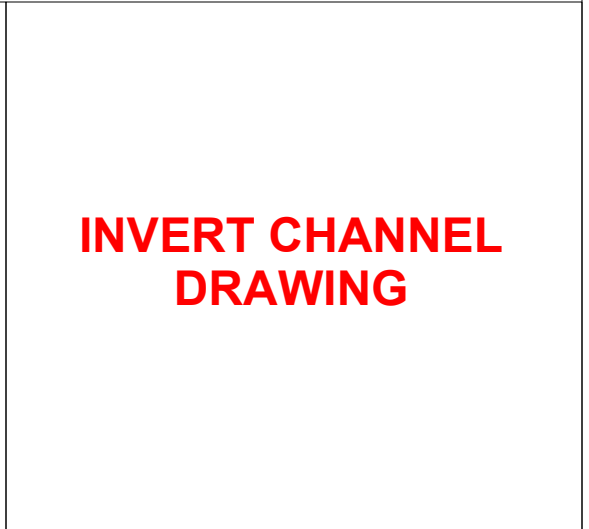
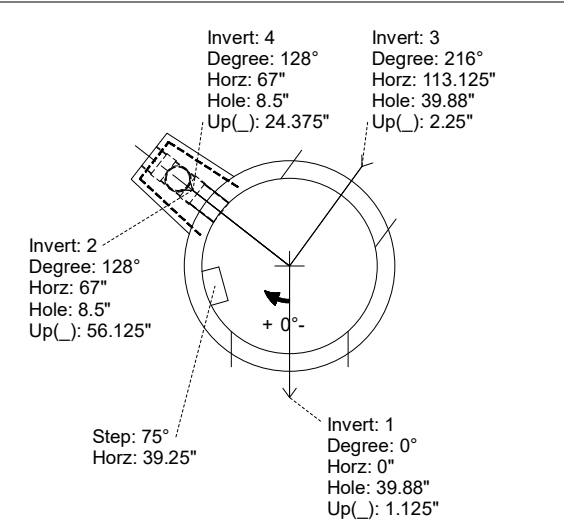
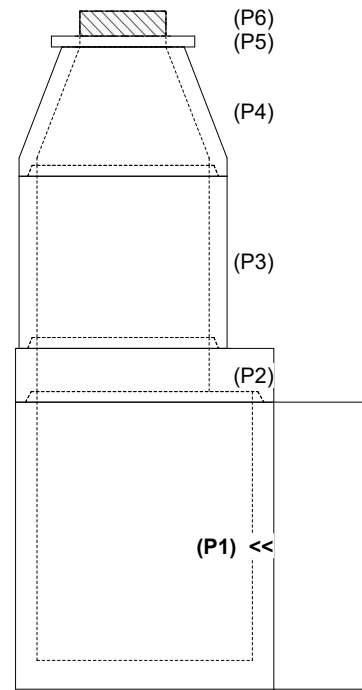
Structure Total: 22984 lb

Rim: 760.2' Rim to Invert: 14.96' Slack: 1.52" Sump: 3" Step Position: 75°

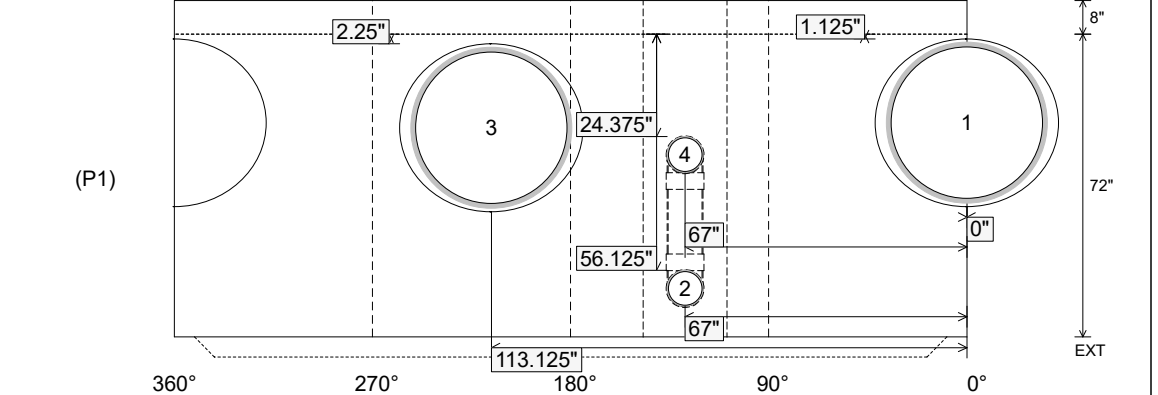
Position	Elev	Angle	Ext. (cw)	Pipe	Pipe OD	Connector	Hole	Horz Size	Up ()	Offset
Invert 1	745.24'	0°	0"	36" PVC SDR35/F679	38.3"	A-Lok 1235	39.88"	43.623"	1.125"	0"
Invert 2	749.69'	128°	80.375"	8" PVC SDR35	8.5"	Drop Tee 8" PVC	8.5"	8.529"	56.125"	0"
Invert 3	745.34'	216°	135.75"	36" PVC SDR35/F679	38.3"	A-Lok 1235	39.88"	43.623"	2.25"	0"
Invert 4	747.04'	128°	80.375"	8" PVC SDR35	8.5"	Drop Elbow 8" PVC	8.5"	8.529"	24.375"	0"
Invert 5										
Invert 6										
Invert 7										
Invert 8										

RIGHT-SIDE UP VIEW (int. dimensions)

UPSIDE-DOWN VIEW (int. dimenions)



INSIDE WALL DIMENSIONS



Coating (Int):
Coating (Ext):

Seam Up: Tongue
Seam Dn: n/a

Wall Thickness: 6"
Floor Height: 8"

Height (Int): 72"
Height (Ext): 80"

Weight (Net): 8838 lb
Volume (Net): 2.26cu.yd