

Job Name: 25-3118 - W6 Ph 2-C Force Main Improvements
 Job Location: Fort Mitchell, KY 41017
 Contractor: Lykins Contracting

Plant: 100

Tech: J. Horsley - A

3/20/2026 1:21:40 PM

PC: Celina Goff



Structure ID: 2301556

P1 MH072BA72

MH BASE T/n

- P5) 24" - CASTING HEIGHT - 7"
- P4) 48" - CON CONE w/24" HOLE F/G - 24"
- P3) 48" - MH RISER T/G - 36"
- P2) 72" - MH Transition Slab 48" Hole T/G - 15"
- P1) 72" - MH BASE T/n - 72"
- 1) 72" - MH INVERT CHANNEL - FULL HEIGHT
- 1) 72" - Conseal CS-102 1.00" (Double)
- 2) 48" - Conseal CS-102 1.00" (Double)
- 2) A-Lok - 1235
- 1) PSX - 12-08 NYLO
- 12) MH Step ML-10-TDS-NCR - 10"

0 lb
 2252 lb
 2515 lb
 3864 lb
 12788 lb
 5422 lb
 0 lb
 0 lb
 2 lb
 8 lb
 0 lb

 Structure Total: 26851 lb

Structure Notes:

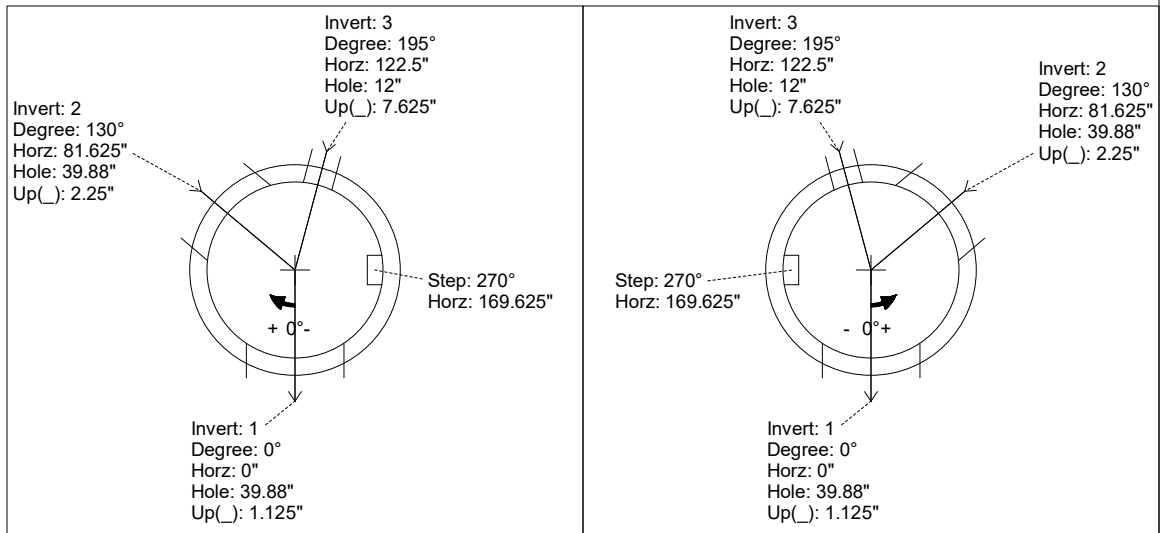
1. PER ASTM C-478 SPECIFICATIONS
2. CONCRETE: 4,000 PSI AT 28 DAYS
3. REINFORCEMENT:
 - WALLS: PER ASTM A615 - DOUBLE MAT
 - FLOOR: #5 BAR @ 12" C.C. E.W. (GRADE 60) - 2" MIN. REBAR CLEARANCE (TYP)
4. INVERT CHANNEL REQUIRED
5. STEPS AT 270 DEGREES
6. 7" CASTING SUPPLIED BY OTHERS

Rim: 752.74' Rim to Invert: 12.87' Slack: 3.44' Sump: 3' Step Position: 270°

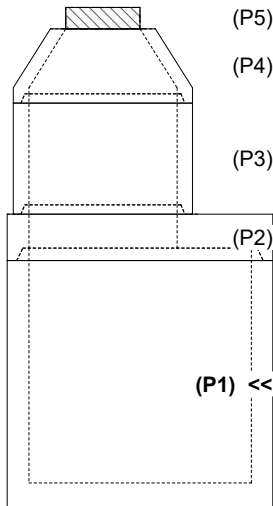
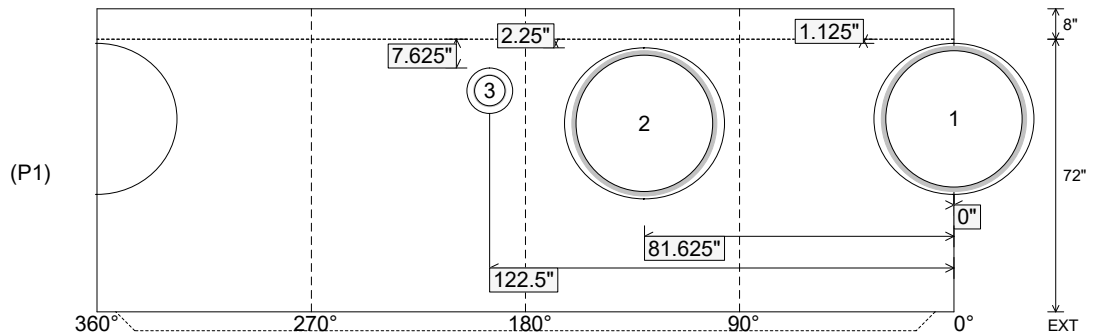
Position	Elev	Angle	Ext. (cw)	Pipe	Pipe OD	Connector	Hole	Horz Size	Up ()	Offset
Invert 1	739.87'	0°	0"	36" PVC SDR35/F679	38.3"	A-Lok 1235	39.88"	42.266"	1.125"	0"
Invert 2	739.97'	130°	97.625"	36" PVC SDR35/F679	38.3"	A-Lok 1235	39.88"	42.266"	2.25"	0"
Invert 3	740.42'	195°	146.375"	8" PVC SDR35	8.5"	PSX 12-08 NYLO	12"	12.056"	7.625"	0"
Invert 4										
Invert 5										
Invert 6										
Invert 7										
Invert 8										

RIGHT-SIDE UP VIEW (int. dimensions)

UPSIDE-DOWN VIEW (int. dimensions)



INSIDE WALL DIMENSIONS



Coating (Int):
 Coating (Ext):

Seam Up: Tongue
 Seam Dn: n/a

Wall Thickness: 7"
 Floor Height: 8"

Height (Int): 72"
 Height (Ext): 80"

Weight (Net): 12788 lb
 Volume (Net): 3.27cu.yd

Structure ID: 2301556

P1 MH072BA72

MH BASE T/n

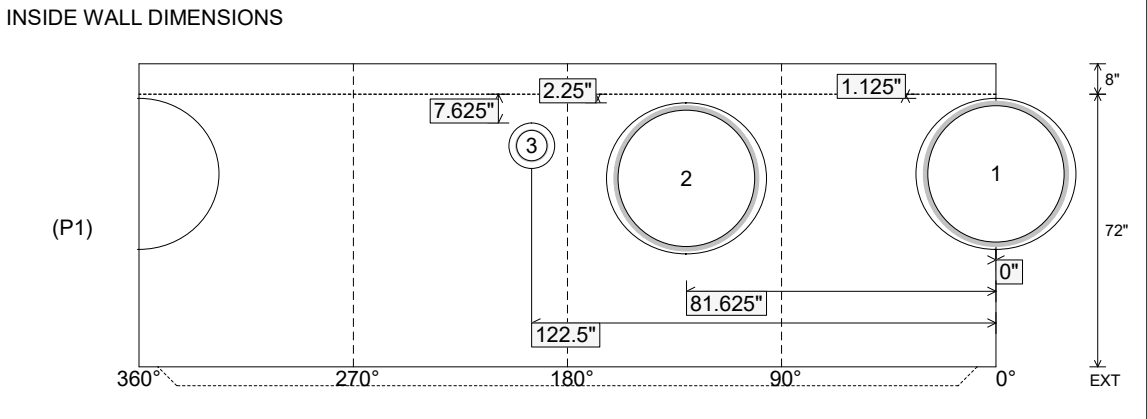
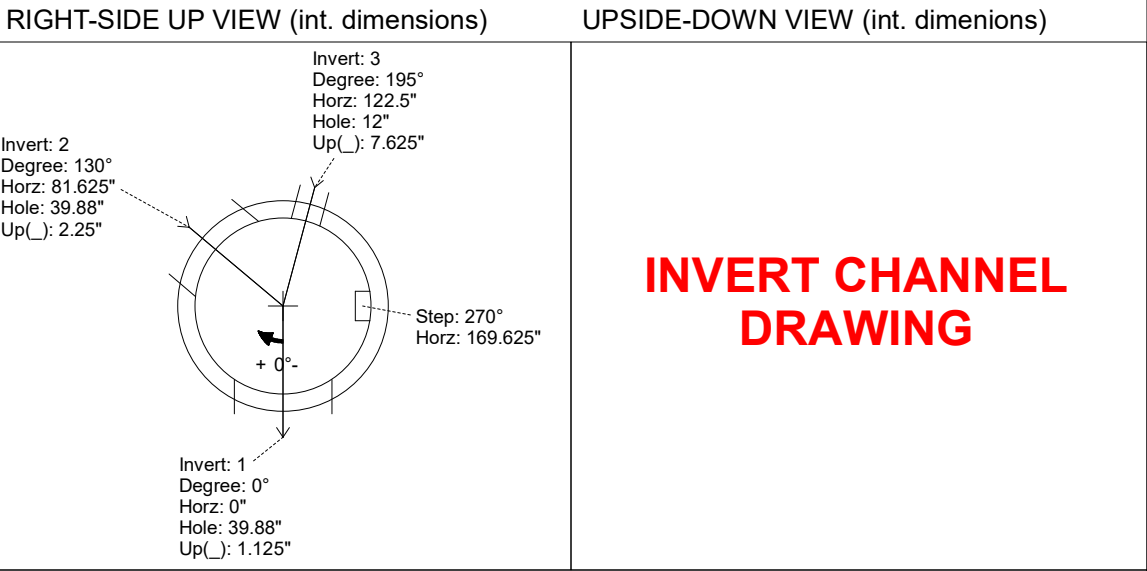
P5) 24" - CASTING HEIGHT - 7" P4) 48" - CON CONE w/24" HOLE F/G - 24" P3) 48" - MH RISER T/G - 36" P2) 72" - MH Transition Slab 48" Hole T/G - 15" P1) 72" - MH BASE T/n - 72" 1) 72" - MH INVERT CHANNEL - FULL HEIGHT 1) 72" - Conseal CS-102 1.00" (Double) 2) 48" - Conseal CS-102 1.00" (Double) 2) A-Lok - 1235 1) PSX - 12-08 NYLO 12) MH Step ML-10-TDS-NCR - 10"	0 lb 2252 lb 2515 lb 3864 lb 12788 lb 5422 lb 0 lb 0 lb 2 lb 8 lb 0 lb ----- Structure Total: 26851 lb
---	--

Structure Notes:

1. PER ASTM C-478 SPECIFICATIONS
2. CONCRETE: 4,000 PSI AT 28 DAYS
3. REINFORCEMENT:
 - WALLS: PER ASTM A615 - DOUBLE MAT
 - FLOOR: #5 BAR @ 12" C.C. E.W. (GRADE 60) - 2" MIN. REBAR CLEARANCE (TYP)
4. INVERT CHANNEL REQUIRED
5. STEPS AT 270 DEGREES
6. 7" CASTING SUPPLIED BY OTHERS

Rim: 752.74' Rim to Invert: 12.87' Slack: 3.44" Sump: 3" Step Position: 270°

Position	Elev	Angle	Ext. (cw)	Pipe	Pipe OD	Connector	Hole	Horz Size	Up (↓)	Offset
Invert 1	739.87'	0°	0"	36" PVC SDR35/F679	38.3"	A-Lok 1235	39.88"	42.266"	1.125"	0"
Invert 2	739.97'	130°	97.625"	36" PVC SDR35/F679	38.3"	A-Lok 1235	39.88"	42.266"	2.25"	0"
Invert 3	740.42'	195°	146.375"	8" PVC SDR35	8.5"	PSX 12-08 NYLO	12"	12.056"	7.625"	0"
Invert 4										
Invert 5										
Invert 6										
Invert 7										
Invert 8										



Coating (Int): Coating (Ext):	Seam Up: Tongue Seam Dn: n/a	Wall Thickness: 7" Floor Height: 8"	Height (Int): 72" Height (Ext): 80"	Weight (Net): 12788 lb Volume (Net): 3.27cu.yd
----------------------------------	---------------------------------	--	--	---