

Job Name: 25-3118 - W6 Ph 2-C Force Main Improvements
 Job Location: Fort Mitchell, KY 41017
 Contractor: Lykins Contracting

Plant: 100

Tech: J. Horsley - A

3/20/2026 1:21:29 PM

PC: Celina Goff



Structure ID: 2301547

P1 MH072DPVF

MH BASE (10" F) w/DROP Custom Ht T/n

- P6) 24" - CASTING HEIGHT - 7" 0 lb
- P5) 24" - GRADE RING F/F - 4" 270 lb
- P4) 48" - CON CONE w/24" HOLE F/G - 36" 2252 lb
- P3) 72" - MH Transition Slab 48" Hole T/G - 15" 3864 lb
- P2) 72" - MH RISER w/DROP Custom Ht T/G - 72" 10463 lb
- P1) 72" - MH BASE (10" F) w/DROP Custom Ht T/n - 72" 17336 lb
- 1) 72" - MH INVERT CHANNEL - FULL HEIGHT 5422 lb
- 1) SECONDARY POUR - Add Exterior Drop to Base (P1) 3526 lb
- 1) SECONDARY POUR - Add Exterior Drop to Riser (P2) 3096 lb
- 2) 72" - Conseal CS-102 1.00" (Double) 0 lb
- 1) 48" - Conseal CS-102 1.00" (Double) 0 lb
- 2) A-Lok - 1235 2 lb
- 1) Drop Tee - 8" PVC 0 lb
- 1) Drop Elbow - 8" PVC 0 lb
- 16) MH Step ML-10-TDS-NCR - 10" 0 lb

Structure Total: 46231 lb

Structure Notes:

1. PER ASTM C-478 SPECIFICATIONS
2. CONCRETE: 4,000 PSI AT 28 DAYS
3. EXTERIOR DROP REINFORCEMENT: DRILL & STUB #4 BAR @ 12" C.C. E.W. (GRADE 60) - 2" MIN. REBAR CLEARANCE (TYP)
4. INVERT CHANNEL REQUIRED
5. STEPS AT 270 DEGREES
6. 7" CASTING SUPPLIED BY OTHERS
7. EXTERIOR DROP AT INVERTS 3 & 4 SUPPLIED BY ICAST
8. ADD 8" SDR 35 DROP & ELBOW AT INVERT 4 (180°)

FIRST POUR (BASE): 17,336 LBS

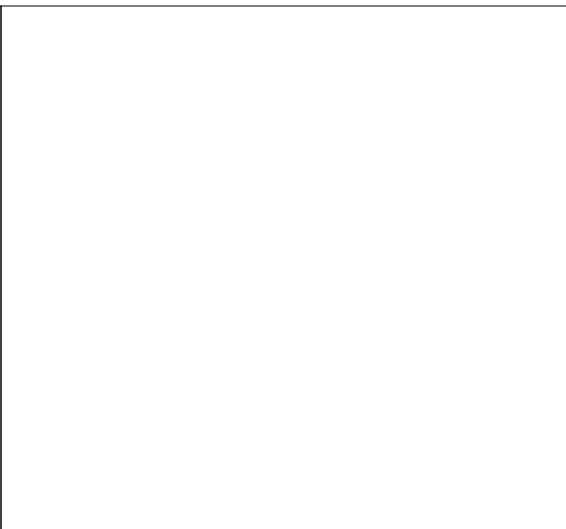
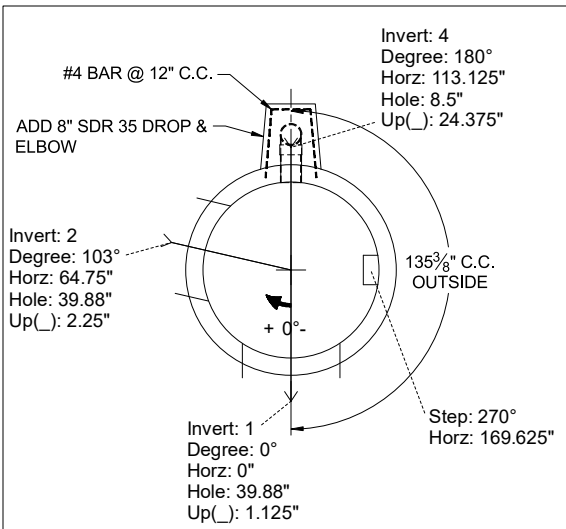
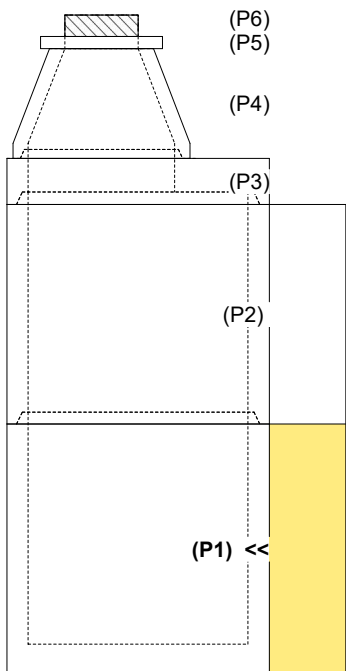
SECOND POUR (DROP): 3,526 LBS

Rim: 752.09' Rim to Invert: 17' Slack: 1" Sump: 3" Step Position: 270°

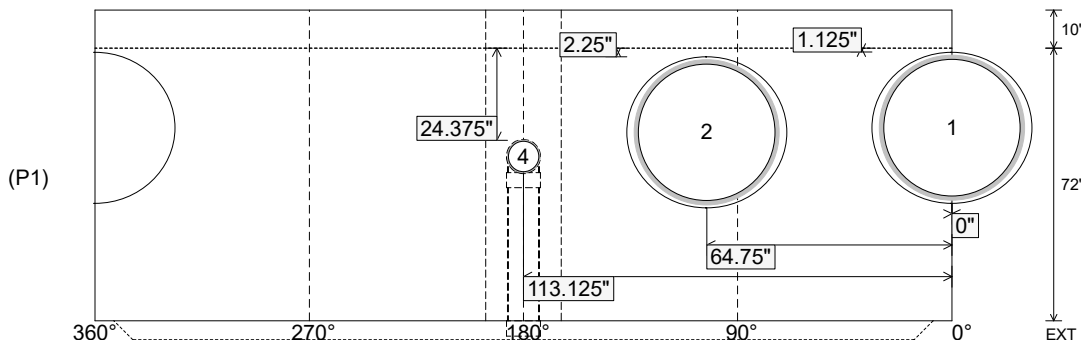
Position	Elev	Angle	Ext. (cw)	Pipe	Pipe OD	Connector	Hole	Horz Size	Up ()	Offset
Invert 1	735.09'	0°	0"	36" PVC SDR35/F679	38.3"	A-Lok 1235	39.88"	42.266"	1.125"	0"
Invert 2	735.19'	103°	77.25"	36" PVC SDR35/F679	38.3"	A-Lok 1235	39.88"	42.266"	2.25"	0"
Invert 3										
Invert 4	736.89'	180°	135.125"	8" PVC SDR35	8.5"	Drop Elbow 8" PVC	8.5"	8.52"	24.375"	0"
Invert 5										
Invert 6										
Invert 7										
Invert 8										

RIGHT-SIDE UP VIEW (int. dimensions)

UPSIDE-DOWN VIEW (int. dimensions)



INSIDE WALL DIMENSIONS



Coating (Int):
Coating (Ext):

Seam Up: Tongue
Seam Dn: n/a

Wall Thickness: 7"
Floor Height: 10"

Height (Int): 72"
Height (Ext): 82"

Weight (Net): 17336 lb
Volume (Net): 4.43cu.yd

Job Name: 25-3118 - W6 Ph 2-C Force Main Improvements
 Job Location: Fort Mitchell, KY 41017
 Contractor: Lykins Contracting

Plant: 100

Tech: J. Horsley - A

3/20/2026 1:21:29 PM

PC: Celina Goff



Structure ID: 2301547

P1 MH072DPVF

MH BASE (10" F) w/DROP Custom Ht T/n

P6) 24" - CASTING HEIGHT - 7"	0 lb
P5) 24" - GRADE RING F/F - 4"	270 lb
P4) 48" - CON CONE w/24" HOLE F/G - 36"	2252 lb
P3) 72" - MH Transition Slab 48" Hole T/G - 15"	3864 lb
P2) 72" - MH RISER w/DROP Custom Ht T/G - 72"	10463 lb
P1) 72" - MH BASE (10" F) w/DROP Custom Ht T/n - 72"	17336 lb
1) 72" - MH INVERT CHANNEL - FULL HEIGHT	5422 lb
1) SECONDARY POUR - Add Exterior Drop to Base (P1)	3526 lb
1) SECONDARY POUR - Add Exterior Drop to Riser (P2)	3096 lb
2) 72" - Conseal CS-102 1.00" (Double)	0 lb
1) 48" - Conseal CS-102 1.00" (Double)	0 lb
2) A-Lok - 1235	2 lb
1) Drop Tee - 8" PVC	0 lb
1) Drop Elbow - 8" PVC	0 lb
16) MH Step ML-10-TDS-NCR - 10"	0 lb
Structure Total:	46231 lb

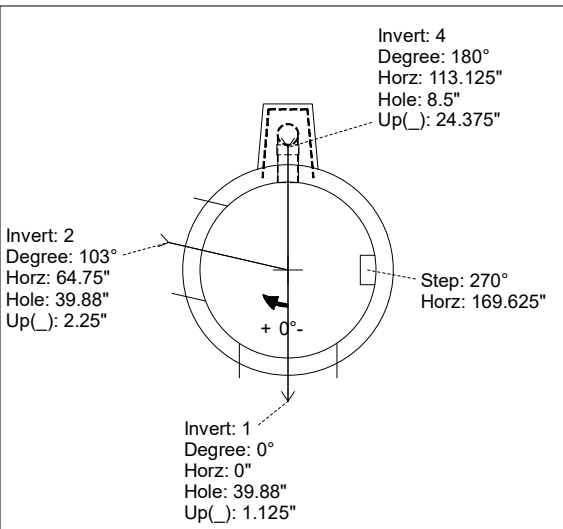
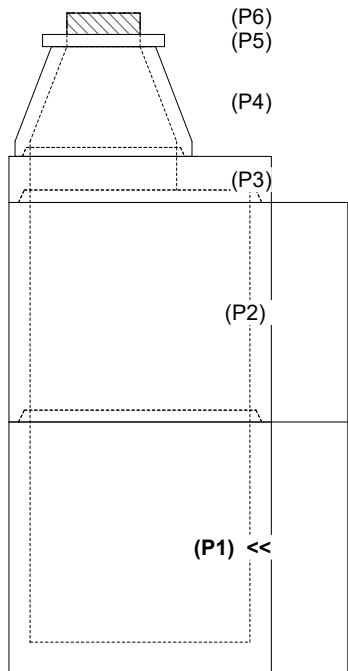
Structure Notes:
 1. PER ASTM C-478 SPECIFICATIONS
 2. CONCRETE: 4,000 PSI AT 28 DAYS
 3. REINFORCEMENT:
 - WALLS: PER ASTM A615 - DOUBLE MAT
 - FLOOR: #5 BAR @ 12" C.C. E.W. (GRADE 60) - 2" MIN. REBAR CLEARANCE (TYP)
 4. INVERT CHANNEL REQUIRED
 5. STEPS AT 270 DEGREES
 6. 7" CASTING SUPPLIED BY OTHERS
 7. EXTERIOR DROP AT INVERTS 3 & 4 SUPPLIED BY ICAST

Rim: 752.09' Rim to Invert: 17' Slack: 1" Sump: 3" Step Position: 270°

Position	Elev	Angle	Ext. (cw)	Pipe	Pipe OD	Connector	Hole	Horz Size	Up ()	Offset
Invert 1	735.09'	0°	0"	36" PVC SDR35/F679	38.3"	A-Lok 1235	39.88"	42.266"	1.125"	0"
Invert 2	735.19'	103°	77.25"	36" PVC SDR35/F679	38.3"	A-Lok 1235	39.88"	42.266"	2.25"	0"
Invert 3										
Invert 4	736.89'	180°	135.125"	8" PVC SDR35	8.5"	Drop Elbow 8" PVC	8.5"	8.52"	24.375"	0"
Invert 5										
Invert 6										
Invert 7										
Invert 8										

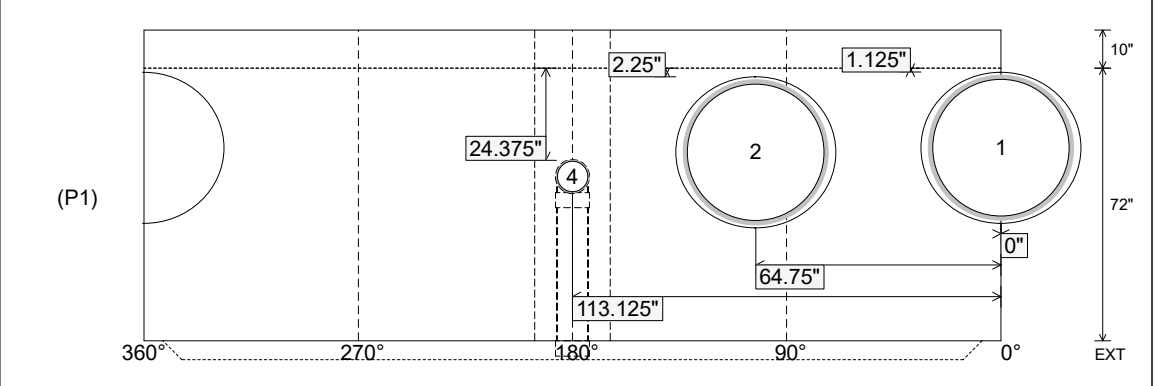
RIGHT-SIDE UP VIEW (int. dimensions)

UPSIDE-DOWN VIEW (int. dimenions)



INVERT CHANNEL DRAWING

INSIDE WALL DIMENSIONS



Coating (Int): Coating (Ext):	Seam Up: Tongue Seam Dn: n/a	Wall Thickness: 7" Floor Height: 10"	Height (Int): 72" Height (Ext): 82"	Weight (Net): 17336 lb Volume (Net): 4.43cu.yd
----------------------------------	---------------------------------	---	--	---