

**Job Name: 25-3118 - W6 Ph 2-C Force Main Improvements**  
**Job Location: Fort Mitchell, KY 41017**  
**Contractor: Lykins Contracting**

PC: Celina Goff  
 TECH: J. Horsley - A  
 Plant: 100



Structure ID: **2301546**  
 Spec: Sanitary  
 Type: SAN.MH Transition w/Ext. Drop  
 Size: 72"

Rim: 749.93'  
 Invert: 735.01'  
 Rim to Invert: 14.92'

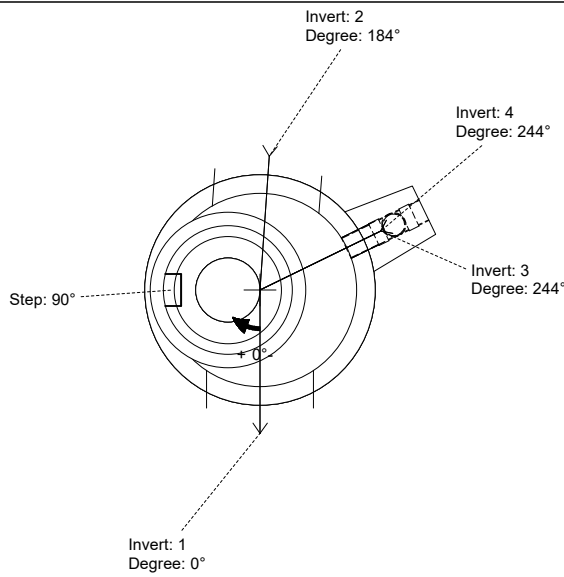
Sump: 3"  
 Floor (Top): 734.76'  
 Floor Height: 8"

Floor (Bot): 734.093'  
 Overall Height: 15.75'  
 Slack: 1.04"

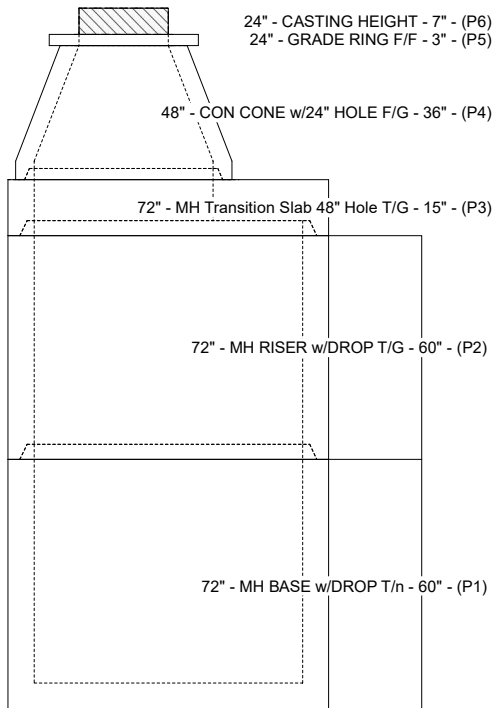
- Structure Notes:**
- PER ASTM C-478 SPECIFICATIONS
  - CONCRETE: 4,000 PSI AT 28 DAYS
  - REINFORCEMENT:
    - CONE & RISER: PER ASTM A615
    - TRANSITION SLAB: #5 BAR @ 6" C.C. E.W. (GRADE 60)
    - BASE WALLS: PER ASTM A615 - DOUBLE MAT
    - BASE FLOOR: #5 BAR @ 12" C.C. E.W. (GRADE 60)
  - INVERT CHANNEL REQUIRED
  - STEPS AT 90 DEGREES
  - 7" CASTING SUPPLIED BY OTHERS
  - EXTERIOR DROP AT INVERTS 3 & 4 SUPPLIED BY ICAST

**STRUCTURE SUMMARY:**

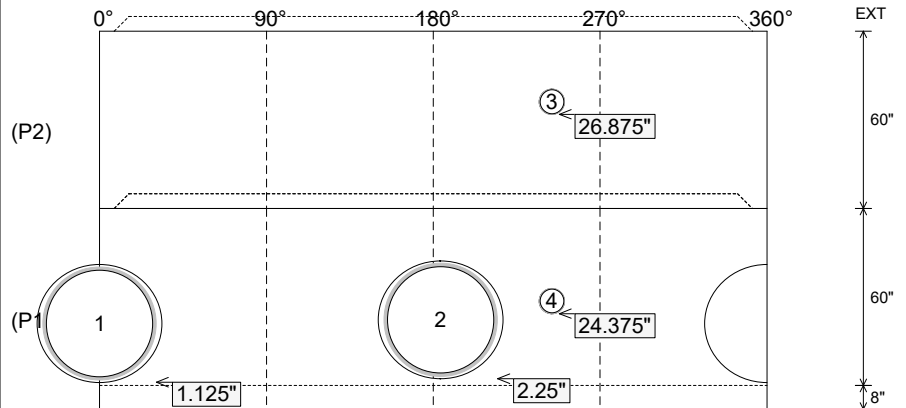
P6) 24" - CASTING HEIGHT - 7"	0 lb
P5) 24" - GRADE RING F/F - 3"	202 lb
P4) 48" - CON CONE w/24" HOLE F/G - 36"	2252 lb
P3) 72" - MH Transition Slab 48" Hole T/G - 15"	3864 lb
P2) 72" - MH RISER w/DROP T/G - 60"	8713 lb
P1) 72" - MH BASE w/DROP T/n - 60"	11072 lb
1) 72" - MH INVERT CHANNEL - FULL HEIGHT	5422 lb
1) SECONDARY POUR - Add Exterior Drop to Base (P1)	2924 lb
1) SECONDARY POUR - Add Exterior Drop to Riser (P2)	2580 lb
2) 72" - Conseal CS-102 1.00" (Double)	0 lb
1) 48" - Conseal CS-102 1.00" (Double)	0 lb
2) A-Lok - 1235	2 lb
1) Drop Tee - 8" PVC	0 lb
1) Drop Elbow - 8" PVC	0 lb
14) MH Step ML-10-TDS-NCR - 10"	0 lb
	-----
<b>Structure Total:</b>	<b>37033 lb</b>



Position	Elev	Angle	Pipe	Pipe OD	Hole	Connector	Up (L)	Ref
Rim	749.93'							
Reducer	744.76'							
Invert 1	735.01'	0°	36" PVC SDR35/F679	38.3"	39.88"	A-Lok 1235	1.125"	P1
Invert 2	735.11'	184°	36" PVC SDR35/F679	38.3"	39.88"	A-Lok 1235	2.25"	P1
Invert 3	742.44'	244°	8" PVC SDR35	8.5"	8.5"	Drop Tee 8" PVC	26.875"	P2
Invert 4	736.81'	244°	8" PVC SDR35	8.5"	8.5"	Drop Elbow 8" PVC	24.375"	P1
Invert 5								
Invert 6								
Invert 7								
Invert 8								



**Cast (Int. Dim.) - Interior Dimensions**



Submittal Drawing  
 3/17/2026 12:35:17 PM

SUBMITTAL  
 APPROVED BY: