

Job Name: 25-3118 - W6 Ph 2-C Force Main Improvements
 Job Location: Fort Mitchell, KY 41017
 Contractor: Lykins Contracting

Plant: 100

Tech: J. Horsley - A

3/20/2026 1:21:28 PM

PC: Celina Goff



Structure ID: 2301546

P1 MH072BA60

MH BASE w/DROP T/n

- P6) 24" - CASTING HEIGHT - 7"
- P5) 24" - GRADE RING F/F - 3"
- P4) 48" - CON CONE w/24" HOLE F/G - 36"
- P3) 72" - MH Transition Slab 48" Hole T/G - 15"
- P2) 72" - MH RISER w/DROP T/G - 60"
- P1) 72" - MH BASE w/DROP T/n - 60"
- 1) 72" - MH INVERT CHANNEL - FULL HEIGHT
- 1) SECONDARY POUR - Add Exterior Drop to Base (P1)
- 1) SECONDARY POUR - Add Exterior Drop to Riser (P2)
- 2) 72" - Conseal CS-102 1.00" (Double)
- 1) 48" - Conseal CS-102 1.00" (Double)
- 2) A-Lok - 1235
- 1) Drop Tee - 8" PVC
- 1) Drop Elbow - 8" PVC
- 14) MH Step ML-10-TDS-NCR - 10"

0 lb
 202 lb
 2252 lb
 3864 lb
 8713 lb
 11072 lb
 5422 lb
 2924 lb
 2580 lb
 0 lb
 0 lb
 2 lb
 0 lb
 0 lb
 0 lb
 0 lb
 0 lb
 0 lb
 Structure Total: 37033 lb

- Structure Notes:**
1. PER ASTM C-478 SPECIFICATIONS
 2. CONCRETE: 4,000 PSI AT 28 DAYS
 3. REINFORCEMENT:
 - WALLS: PER ASTM A615 - DOUBLE MAT
 - FLOOR: #5 BAR @ 12" C.C. E.W. (GRADE 60) - 2" MIN. REBAR CLEARANCE (TYP)
 4. INVERT CHANNEL REQUIRED
 5. STEPS AT 90 DEGREES
 6. 7" CASTING SUPPLIED BY OTHERS
 7. EXTERIOR DROP AT INVERTS 3 & 4 SUPPLIED BY ICAST

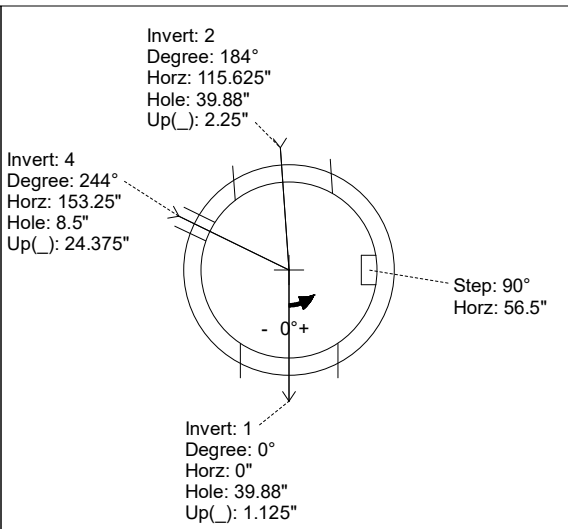
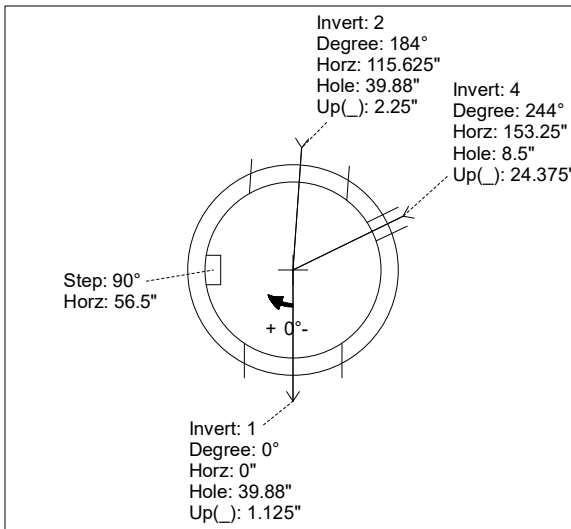
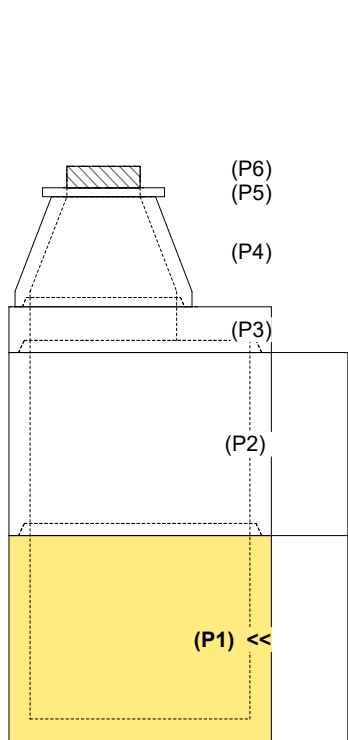
FIRST POUR (BASE): 11,072 LBS
SECOND POUR (DROP): 2,924 LBS

Rim: 749.93' Rim to Invert: 14.92' Slack: 1.04" Sump: 3" Step Position: 90°

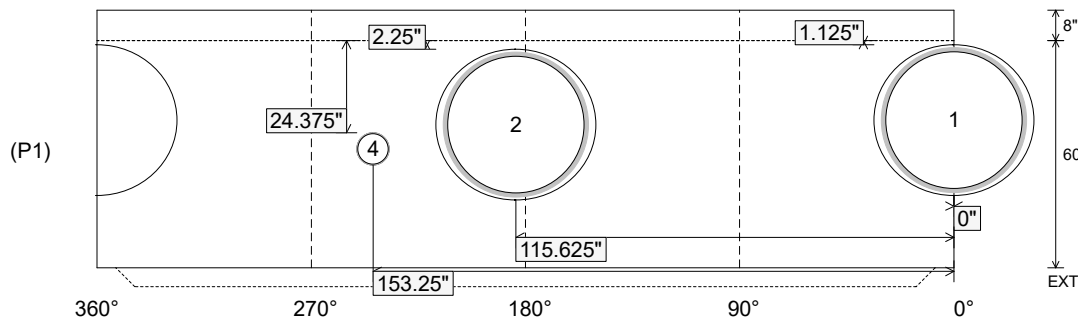
Position	Elev	Angle	Ext. (cw)	Pipe	Pipe OD	Connector	Hole	Horz Size	Up ()	Offset
Invert 1	735.01'	0°	0"	36" PVC SDR35/F679	38.3"	A-Lok 1235	39.88"	42.266"	1.125"	0"
Invert 2	735.11'	184°	138.125"	36" PVC SDR35/F679	38.3"	A-Lok 1235	39.88"	42.266"	2.25"	0"
Invert 3										
Invert 4	736.81'	244°	183.125"	8" PVC SDR35	8.5"	Drop Elbow 8" PVC	8.5"	8.52"	24.375"	0"
Invert 5										
Invert 6										
Invert 7										
Invert 8										

RIGHT-SIDE UP VIEW (int. dimensions)

UPSIDE-DOWN VIEW (int. dimensions)



INSIDE WALL DIMENSIONS



Coating (Int):
 Coating (Ext):

Seam Up: Tongue
 Seam Dn: n/a

Wall Thickness: 7"
 Floor Height: 8"

Height (Int): 60"
 Height (Ext): 68"

Weight (Net): 11072 lb
 Volume (Net): 2.83cu.yd

Job Name: 25-3118 - W6 Ph 2-C Force Main Improvements
 Job Location: Fort Mitchell, KY 41017
 Contractor: Lykins Contracting

Plant: 100

Tech: J. Horsley - A

3/20/2026 1:21:28 PM

PC: Celina Goff



Structure ID: 2301546

P1 MH072BA60

MH BASE w/DROP T/n

- P6) 24" - CASTING HEIGHT - 7"
- P5) 24" - GRADE RING F/F - 3"
- P4) 48" - CON CONE w/24" HOLE F/G - 36"
- P3) 72" - MH Transition Slab 48" Hole T/G - 15"
- P2) 72" - MH RISER w/DROP T/G - 60"
- P1) 72" - MH BASE w/DROP T/n - 60"
- 1) 72" - MH INVERT CHANNEL - FULL HEIGHT
- 1) SECONDARY POUR - Add Exterior Drop to Base (P1)
- 1) SECONDARY POUR - Add Exterior Drop to Riser (P2)
- 2) 72" - Conseal CS-102 1.00" (Double)
- 1) 48" - Conseal CS-102 1.00" (Double)
- 2) A-Lok - 1235
- 1) Drop Tee - 8" PVC
- 1) Drop Elbow - 8" PVC
- 14) MH Step ML-10-TDS-NCR - 10"

- 0 lb
- 202 lb
- 2252 lb
- 3864 lb
- 8713 lb
- 11072 lb
- 5422 lb
- 2924 lb
- 2580 lb
- 0 lb
- 0 lb
- 2 lb
- 0 lb
- 0 lb
- 0 lb
- 0 lb
- Structure Total: 37033 lb

- Structure Notes:**
1. PER ASTM C-478 SPECIFICATIONS
 2. CONCRETE: 4,000 PSI AT 28 DAYS
 3. EXTERIOR DROP REINFORCEMENT: DRILL & STUB #4 BAR @ 12" C.C. E.W. (GRADE 60) - 2" MIN. REBAR CLEARANCE (TYP)
 4. INVERT CHANNEL REQUIRED
 5. STEPS AT 90 DEGREES
 6. 7" CASTING SUPPLIED BY OTHERS
 7. EXTERIOR DROP AT INVERTS 3 & 4 SUPPLIED BY ICAST
 8. ADD 8" SDR 35 DROP & ELBOW AT INVERT 4 (244°)

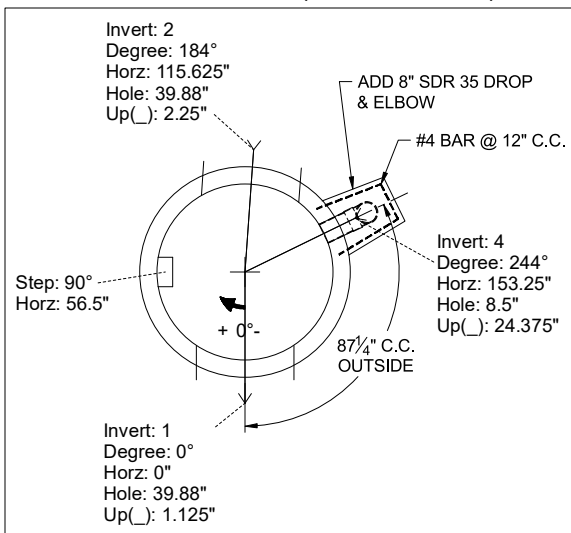
FIRST POUR (BASE): 11,072 LBS
SECOND POUR (DROP): 2,924 LBS

Rim: 749.93' Rim to Invert: 14.92' Slack: 1.04" Sump: 3" Step Position: 90°

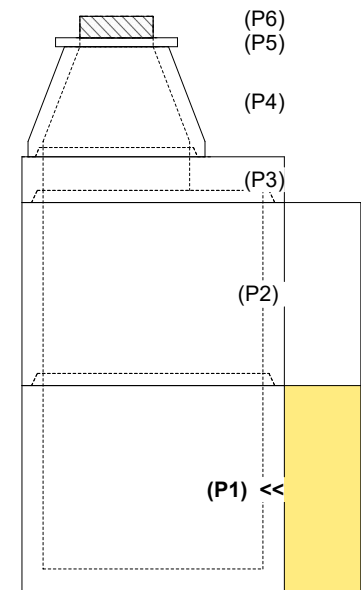
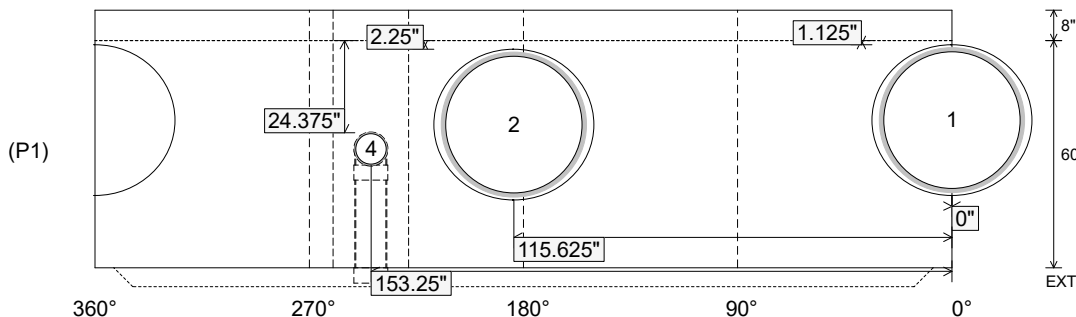
Position	Elev	Angle	Ext. (cw)	Pipe	Pipe OD	Connector	Hole	Horz Size	Up (L)	Offset
Invert 1	735.01'	0°	0"	36" PVC SDR35/F679	38.3"	A-Lok 1235	39.88"	42.266"	1.125"	0"
Invert 2	735.11'	184°	138.125"	36" PVC SDR35/F679	38.3"	A-Lok 1235	39.88"	42.266"	2.25"	0"
Invert 3										
Invert 4	736.81'	244°	183.125"	8" PVC SDR35	8.5"	Drop Elbow 8" PVC	8.5"	8.52"	24.375"	0"
Invert 5										
Invert 6										
Invert 7										
Invert 8										

RIGHT-SIDE UP VIEW (int. dimensions)

UPSIDE-DOWN VIEW (int. dimensions)



INSIDE WALL DIMENSIONS



Coating (Int):
 Coating (Ext):

Seam Up: Tongue
 Seam Dn: n/a

Wall Thickness: 7"
 Floor Height: 8"

Height (Int): 60"
 Height (Ext): 68"

Weight (Net): 11072 lb
 Volume (Net): 2.83cu.yd

Job Name: 25-3118 - W6 Ph 2-C Force Main Improvements
 Job Location: Fort Mitchell, KY 41017
 Contractor: Lykins Contracting

Plant: 100

Tech: J. Horsley - A

3/20/2026 1:21:28 PM

PC: Celina Goff



Structure ID: 2301546

P1 MH072BA60

MH BASE w/DROP T/n

P6) 24" - CASTING HEIGHT - 7"	0 lb
P5) 24" - GRADE RING F/F - 3"	202 lb
P4) 48" - CON CONE w/24" HOLE F/G - 36"	2252 lb
P3) 72" - MH Transition Slab 48" Hole T/G - 15"	3864 lb
P2) 72" - MH RISER w/DROP T/G - 60"	8713 lb
P1) 72" - MH BASE w/DROP T/n - 60"	11072 lb
1) 72" - MH INVERT CHANNEL - FULL HEIGHT	5422 lb
1) SECONDARY POUR - Add Exterior Drop to Base (P1)	2924 lb
1) SECONDARY POUR - Add Exterior Drop to Riser (P2)	2580 lb
2) 72" - Conseal CS-102 1.00" (Double)	0 lb
1) 48" - Conseal CS-102 1.00" (Double)	0 lb
2) A-Lok - 1235	2 lb
1) Drop Tee - 8" PVC	0 lb
1) Drop Elbow - 8" PVC	0 lb
14) MH Step ML-10-TDS-NCR - 10"	0 lb
Structure Total:	37033 lb

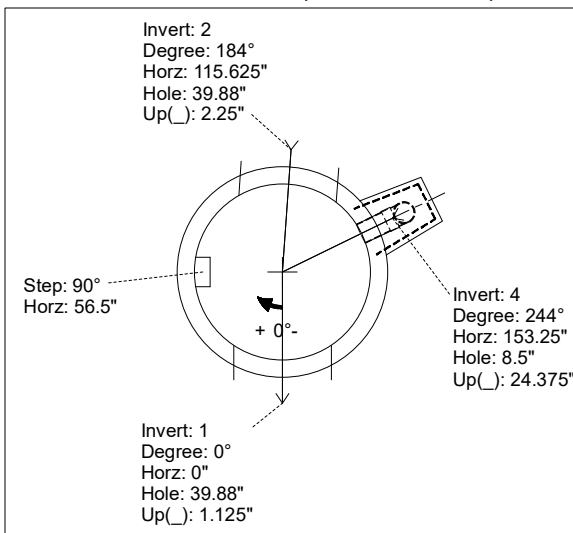
Structure Notes:
 1. PER ASTM C-478 SPECIFICATIONS
 2. CONCRETE: 4,000 PSI AT 28 DAYS
 3. REINFORCEMENT:
 - WALLS: PER ASTM A615 - DOUBLE MAT
 - FLOOR: #5 BAR @ 12" C.C. E.W. (GRADE 60) - 2" MIN. REBAR CLEARANCE (TYP)
 4. INVERT CHANNEL REQUIRED
 5. STEPS AT 90 DEGREES
 6. 7" CASTING SUPPLIED BY OTHERS
 7. EXTERIOR DROP AT INVERTS 3 & 4 SUPPLIED BY ICAST

Rim: 749.93' Rim to Invert: 14.92' Slack: 1.04" Sump: 3" Step Position: 90°

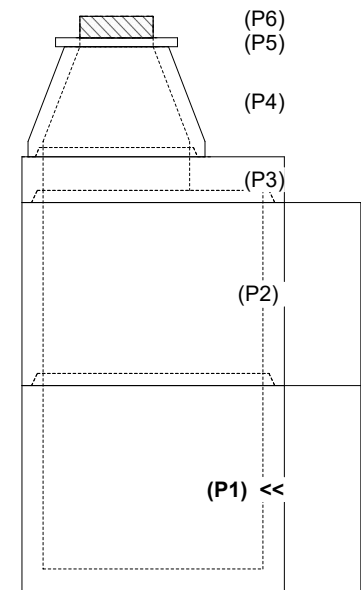
Position	Elev	Angle	Ext. (cw)	Pipe	Pipe OD	Connector	Hole	Horz Size	Up ()	Offset
Invert 1	735.01'	0°	0"	36" PVC SDR35/F679	38.3"	A-Lok 1235	39.88"	42.266"	1.125"	0"
Invert 2	735.11'	184°	138.125"	36" PVC SDR35/F679	38.3"	A-Lok 1235	39.88"	42.266"	2.25"	0"
Invert 3										
Invert 4	736.81'	244°	183.125"	8" PVC SDR35	8.5"	Drop Elbow 8" PVC	8.5"	8.52"	24.375"	0"
Invert 5										
Invert 6										
Invert 7										
Invert 8										

RIGHT-SIDE UP VIEW (int. dimensions)

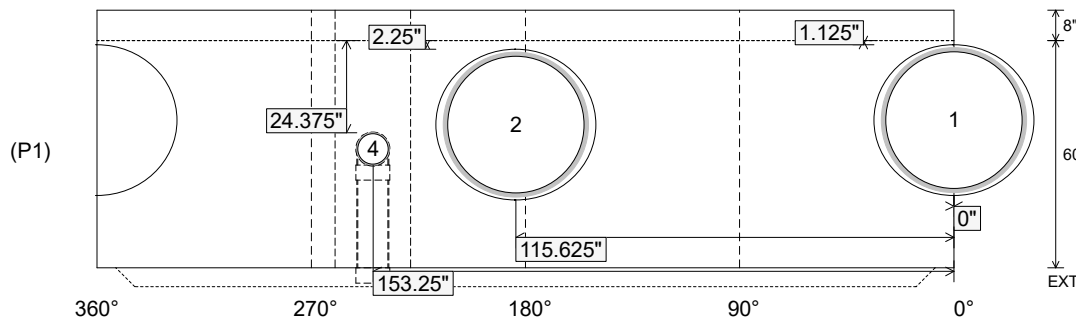
UPSIDE-DOWN VIEW (int. dimenions)



INVERT CHANNEL DRAWING



INSIDE WALL DIMENSIONS



Coating (Int):
 Coating (Ext):

Seam Up: Tongue
 Seam Dn: n/a

Wall Thickness: 7"
 Floor Height: 8"

Height (Int): 60"
 Height (Ext): 68"

Weight (Net): 11072 lb
 Volume (Net): 2.83cu.yd