

Job Name: 25-3118 - W6 Ph 2-C Force Main Improvements
Job Location: Fort Mitchell, KY 41017
Contractor: Lykins Contracting

PC: Celina Goff
 TECH: J. Horsley - A
 Plant: 100



Structure ID: **2301540**
 Spec: Sanitary
 Type: SAN.MH Transition w/Ext. Drop
 Size: 60"

Rim: 751.8'
 Invert: 733.59'
 Rim to Invert: 18.21'

Sump: 3"
 Floor (Top): 733.34'
 Floor Height: 10"

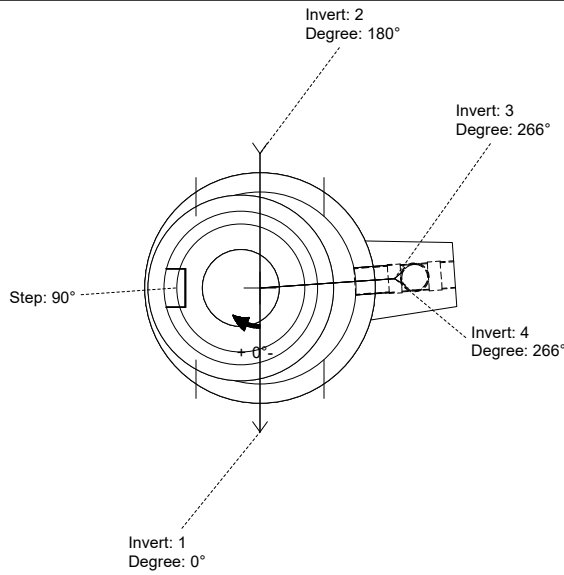
Floor (Bot): 732.507'
 Overall Height: 19.167'
 Slack: 1.52"

Structure Notes:

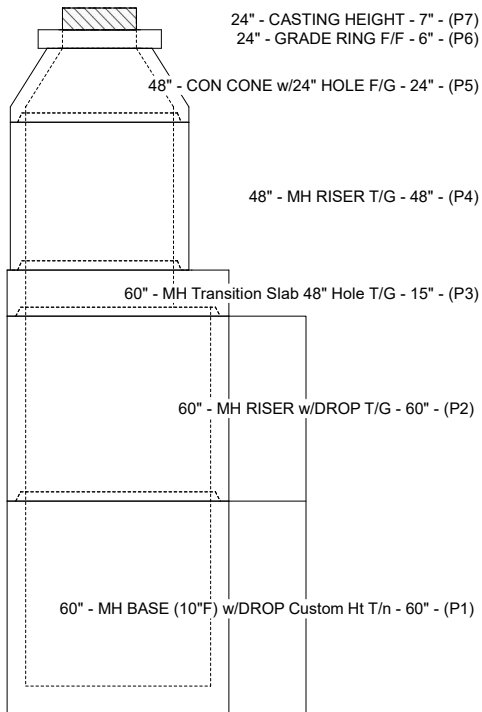
- PER ASTM C-478 SPECIFICATIONS
- CONCRETE: 4,000 PSI AT 28 DAYS
- REINFORCEMENT:
 - CONE & RISERS: PER ASTM A615
 - TRANSITION SLAB: #5 BAR @ 6" C.C. E.W. (GRADE 60)
 - BASE WALLS: PER ASTM A615 - DOUBLE MAT
 - BASE FLOOR: #5 BAR @ 12" C.C. E.W. (GRADE 60)
- INVERT CHANNEL REQUIRED
- STEPS AT 90 DEGREES
- 7" CASTING SUPPLIED BY OTHERS
- EXTERIOR DROP AT INVERTS 3 & 4 SUPPLIED BY ICAST

STRUCTURE SUMMARY:

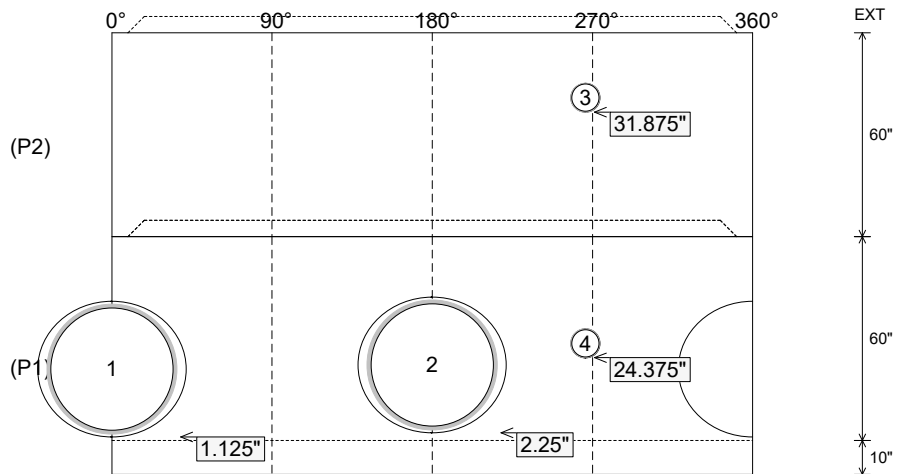
- P7) 24" - CASTING HEIGHT - 7" 0 lb
 - P6) 24" - GRADE RING F/F - 6" 405 lb
 - P5) 48" - CON CONE w/24" HOLE F/G - 24" 2252 lb
 - P4) 48" - MH RISER T/G - 48" 3353 lb
 - P3) 60" - MH Transition Slab 48" Hole T/G - 15" 2204 lb
 - P2) 60" - MH RISER w/DROP T/G - 60" 6235 lb
 - P1) 60" - MH BASE (10"F) w/DROP Custom Ht T/n - 60" 11306 lb
 - 1) 60" - MH INVERT CHANNEL - FULL HEIGHT 2692 lb
 - 1) SECONDARY POUR - Add Exterior Drop to Base (P1) 3010 lb
 - 1) SECONDARY POUR - Add Exterior Drop to Riser (P2) 2580 lb
 - 2) 60" - Conseal CS-102 1.00" (Double) 0 lb
 - 2) 48" - Conseal CS-102 1.00" (Double) 0 lb
 - 2) A-Lok - 1235 2 lb
 - 1) Drop Tee - 8" PVC 0 lb
 - 1) Drop Elbow - 8" PVC 0 lb
 - 16) MH Step ML-10-TDS-NCR - 10" 0 lb
- Structure Total: 34039 lb



Position	Elev	Angle	Pipe	Pipe OD	Hole	Connector	Up (L)	Ref
Rim	751.8'							
Reducer	743.34'							
Invert 1	733.59'	0°	36" PVC SDR35/F679	38.3"	39.88"	A-Lok 1235	1.125"	P1
Invert 2	733.69'	180°	36" PVC SDR35/F679	38.3"	39.88"	A-Lok 1235	2.25"	P1
Invert 3	741.41'	266°	8" PVC SDR35	8.5"	8.5"	Drop Tee 8" PVC	31.875"	P2
Invert 4	735.39'	266°	8" PVC SDR35	8.5"	8.5"	Drop Elbow 8" PVC	24.375"	P1
Invert 5								
Invert 6								
Invert 7								
Invert 8								



Cast (Int. Dim.) - Interior Dimensions



Submittal Drawing
 3/17/2026 12:35:06 PM

SUBMITTAL
 APPROVED BY: