

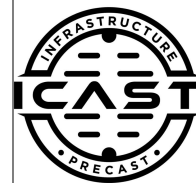
Job Name: 25-3118 - W6 Ph 2-C Force Main Improvements  
 Job Location: Fort Mitchell, KY 41017  
 Contractor: Lykins Contracting

Plant: 100

3/20/2026 1:21:20 PM

Tech: J. Horsley - A

PC: Celina Goff



**Structure ID: 2301540**

**P1 MH060DPVF**

**MH BASE (10"F) w/DROP Custom Ht T/n**

- P7) 24" - CASTING HEIGHT - 7"
- P6) 24" - GRADE RING F/F - 6"
- P5) 48" - CON CONE w/24" HOLE F/G - 24"
- P4) 48" - MH RISER T/G - 48"
- P3) 60" - MH Transition Slab 48" Hole T/G - 15"
- P2) 60" - MH RISER w/DROP T/G - 60"
- P1) 60" - MH BASE (10"F) w/DROP Custom Ht T/n - 60"
- 1) 60" - MH INVERT CHANNEL - FULL HEIGHT
- 1) SECONDARY POUR - Add Exterior Drop to Base (P1)
- 1) SECONDARY POUR - Add Exterior Drop to Riser (P2)
- 2) 60" - Conseal CS-102 1.00" (Double)
- 2) 48" - Conseal CS-102 1.00" (Double)
- 2) A-Lok - 1235
- 1) Drop Tee - 8" PVC
- 1) Drop Elbow - 8" PVC
- 16) MH Step ML-10-TDS-NCR - 10"

- 0 lb
- 405 lb
- 2252 lb
- 3353 lb
- 2204 lb
- 6235 lb
- 11306 lb
- 2692 lb
- 3010 lb
- 2580 lb
- 0 lb
- 0 lb
- 2 lb
- 0 lb
- 0 lb
- 0 lb
- 0 lb

Structure Total: 34039 lb

Structure Notes:

1. PER ASTM C-478 SPECIFICATIONS
2. CONCRETE: 4,000 PSI AT 28 DAYS
3. REINFORCEMENT:
  - WALLS: PER ASTM A615 - DOUBLE MAT
  - FLOOR: #5 BAR @ 12" C.C. E.W. (GRADE 60) - 2" MIN. REBAR CLEARANCE (TYP)
4. INVERT CHANNEL REQUIRED
5. STEPS AT 90 DEGREES
6. 7" CASTING SUPPLIED BY OTHERS
7. EXTERIOR DROP AT INVERTS 3 & 4 SUPPLIED BY ICAST

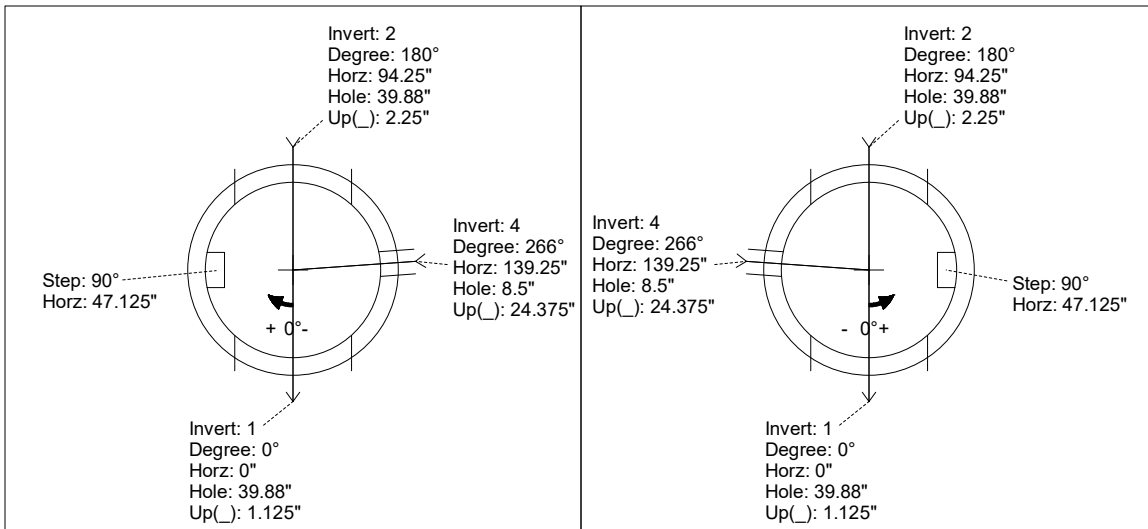
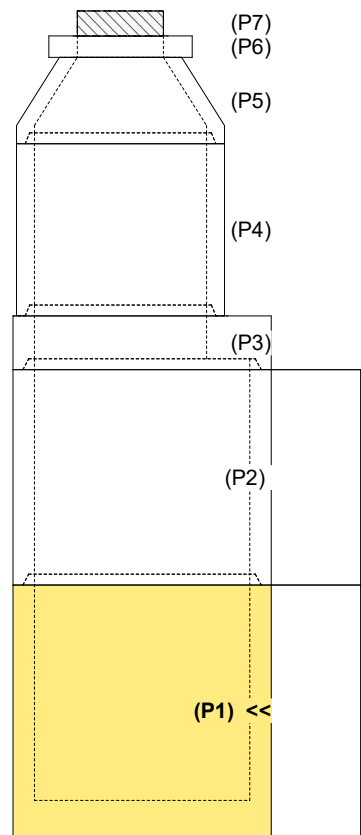
**FIRST POUR (BASE): 11,306 LBS**  
**SECOND POUR (DROP): 3,010 LBS**

Rim: 751.8' Rim to Invert: 18.21' Slack: 1.52" Sump: 3" Step Position: 90°

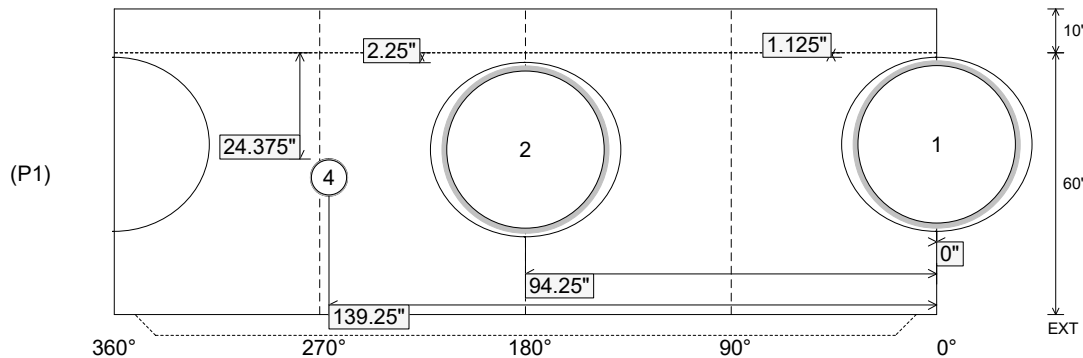
Position	Elev	Angle	Ext. (cw)	Pipe	Pipe OD	Connector	Hole	Horz Size	Up (↓)	Offset
Invert 1	733.59'	0°	0"	36" PVC SDR35/F679	38.3"	A-Lok 1235	39.88"	43.623"	1.125"	0"
Invert 2	733.69'	180°	113.125"	36" PVC SDR35/F679	38.3"	A-Lok 1235	39.88"	43.623"	2.25"	0"
Invert 3										
Invert 4	735.39'	266°	167.125"	8" PVC SDR35	8.5"	Drop Elbow 8" PVC	8.5"	8.529"	24.375"	0"
Invert 5										
Invert 6										
Invert 7										
Invert 8										

RIGHT-SIDE UP VIEW (int. dimensions)

UPSIDE-DOWN VIEW (int. dimensions)



INSIDE WALL DIMENSIONS



Coating (Int):  
Coating (Ext):

Seam Up: Tongue  
Seam Dn: n/a

Wall Thickness: 6"  
Floor Height: 10"

Height (Int): 60"  
Height (Ext): 70"

Weight (Net): 11306 lb  
Volume (Net): 2.89cu.yd

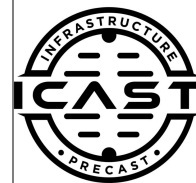
Job Name: 25-3118 - W6 Ph 2-C Force Main Improvements  
 Job Location: Fort Mitchell, KY 41017  
 Contractor: Lykins Contracting

Plant: 100

3/20/2026 1:21:20 PM

Tech: J. Horsley - A

PC: Celina Goff



**Structure ID: 2301540**

**P1 MH060DPVF**

**MH BASE (10" F) w/DROP Custom Ht T/n**

P7) 24" - CASTING HEIGHT - 7"	0 lb
P6) 24" - GRADE RING F/F - 6"	405 lb
P5) 48" - CON CONE w/24" HOLE F/G - 24"	2252 lb
P4) 48" - MH RISER T/G - 48"	3353 lb
P3) 60" - MH Transition Slab 48" Hole T/G - 15"	2204 lb
P2) 60" - MH RISER w/DROP T/G - 60"	6235 lb
P1) 60" - MH BASE (10" F) w/DROP Custom Ht T/n - 60"	11306 lb
1) 60" - MH INVERT CHANNEL - FULL HEIGHT	2692 lb
1) SECONDARY POUR - Add Exterior Drop to Base (P1)	3010 lb
1) SECONDARY POUR - Add Exterior Drop to Riser (P2)	2580 lb
2) 60" - Conseal CS-102 1.00" (Double)	0 lb
2) 48" - Conseal CS-102 1.00" (Double)	0 lb
2) A-Lok - 1235	0 lb
1) Drop Tee - 8" PVC	0 lb
1) Drop Elbow - 8" PVC	0 lb
16) MH Step ML-10-TDS-NCR - 10"	0 lb
<b>Structure Total:</b>	<b>34039 lb</b>

- Structure Notes:**
- PER ASTM C-478 SPECIFICATIONS
  - CONCRETE: 4,000 PSI AT 28 DAYS
  - EXTERIOR DROP REINFORCEMENT: DRILL & STUB #4 BAR @ 12" C.C. E.W. (GRADE 60) - 2" MIN. REBAR CLEARANCE (TYP)
  - INVERT CHANNEL REQUIRED
  - STEPS AT 90 DEGREES
  - 7" CASTING SUPPLIED BY OTHERS
  - EXTERIOR DROP AT INVERTS 3 & 4 SUPPLIED BY ICAST
  - ADD 8" SDR 35 DROP & ELBOW AT INVERT 4 (266°)

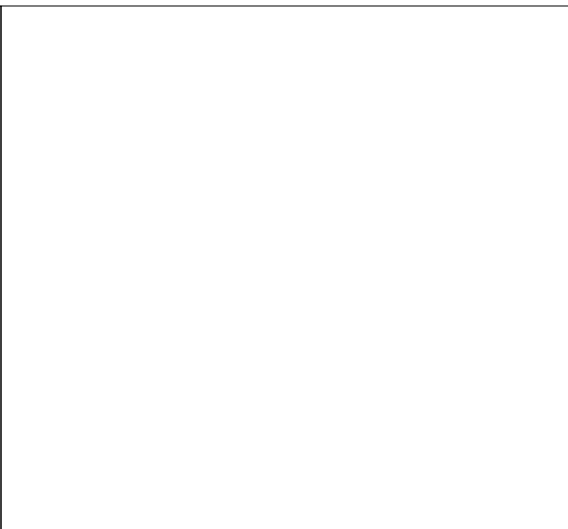
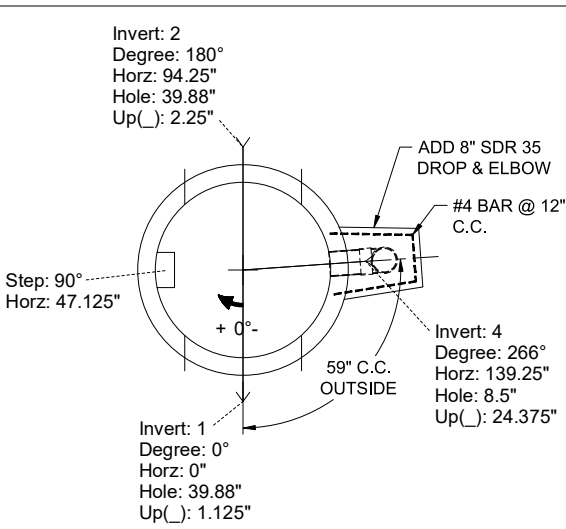
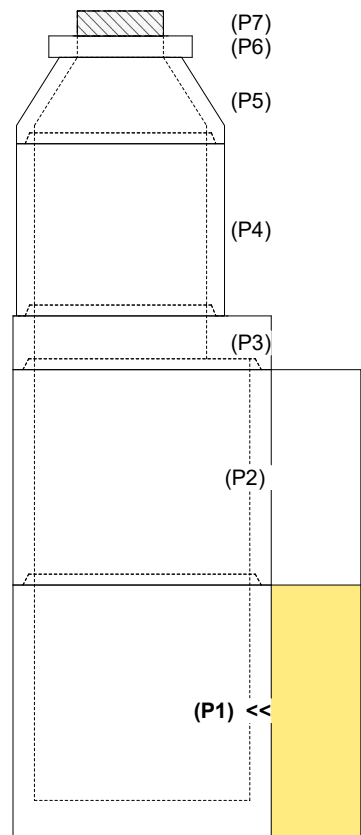
**FIRST POUR (BASE): 11,306 LBS**  
**SECOND POUR (DROP): 3,010 LBS**

Rim: 751.8' Rim to Invert: 18.21' Slack: 1.52" Sump: 3" Step Position: 90°

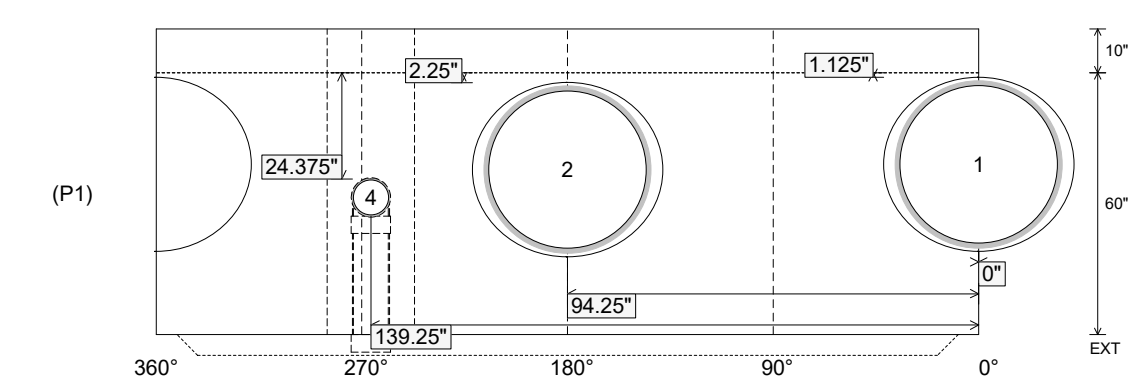
Position	Elev	Angle	Ext. (cw)	Pipe	Pipe OD	Connector	Hole	Horz Size	Up ( )	Offset
Invert 1	733.59'	0°	0"	36" PVC SDR35/F679	38.3"	A-Lok 1235	39.88"	43.623"	1.125"	0"
Invert 2	733.69'	180°	113.125"	36" PVC SDR35/F679	38.3"	A-Lok 1235	39.88"	43.623"	2.25"	0"
Invert 3										
Invert 4	735.39'	266°	167.125"	8" PVC SDR35	8.5"	Drop Elbow 8" PVC	8.5"	8.529"	24.375"	0"
Invert 5										
Invert 6										
Invert 7										
Invert 8										

RIGHT-SIDE UP VIEW (int. dimensions)

UPSIDE-DOWN VIEW (int. dimensions)



INSIDE WALL DIMENSIONS



Coating (Int): Coating (Ext):	Seam Up: Tongue Seam Dn: n/a	Wall Thickness: 6" Floor Height: 10"	Height (Int): 60" Height (Ext): 70"	Weight (Net): 11306 lb Volume (Net): 2.89cu.yd
----------------------------------	---------------------------------	---	--	---

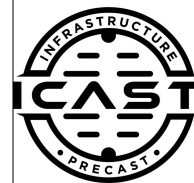
Job Name: 25-3118 - W6 Ph 2-C Force Main Improvements  
 Job Location: Fort Mitchell, KY 41017  
 Contractor: Lykins Contracting

Plant: 100

Tech: J. Horsley - A

3/20/2026 1:21:20 PM

PC: Celina Goff



**Structure ID: 2301540**

**P1 MH060DPVF**

**MH BASE (10" F) w/DROP Custom Ht T/n**

P7) 24" - CASTING HEIGHT - 7"	0 lb
P6) 24" - GRADE RING F/F - 6"	405 lb
P5) 48" - CON CONE w/24" HOLE F/G - 24"	2252 lb
P4) 48" - MH RISER T/G - 48"	3353 lb
P3) 60" - MH Transition Slab 48" Hole T/G - 15"	2204 lb
P2) 60" - MH RISER w/DROP T/G - 60"	6235 lb
P1) 60" - MH BASE (10" F) w/DROP Custom Ht T/n - 60"	11306 lb
1) 60" - MH INVERT CHANNEL - FULL HEIGHT	2692 lb
1) SECONDARY POUR - Add Exterior Drop to Base (P1)	3010 lb
1) SECONDARY POUR - Add Exterior Drop to Riser (P2)	2580 lb
2) 60" - Conseal CS-102 1.00" (Double)	0 lb
2) 48" - Conseal CS-102 1.00" (Double)	0 lb
2) A-Lok - 1235	0 lb
1) Drop Tee - 8" PVC	2 lb
1) Drop Elbow - 8" PVC	0 lb
1) Drop Elbow - 8" PVC	0 lb
16) MH Step ML-10-TDS-NCR - 10"	0 lb
<b>Structure Total:</b>	<b>34039 lb</b>

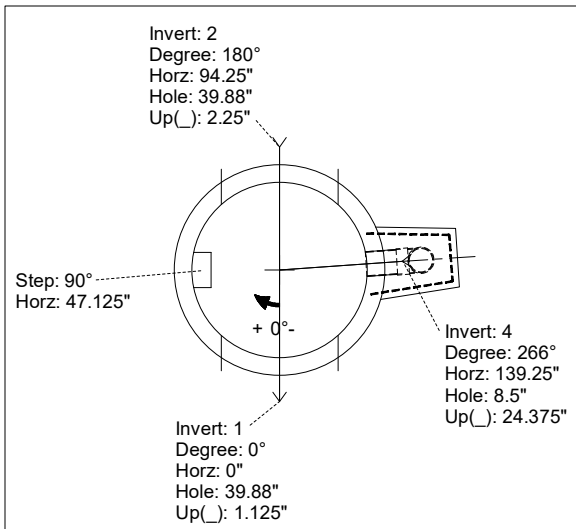
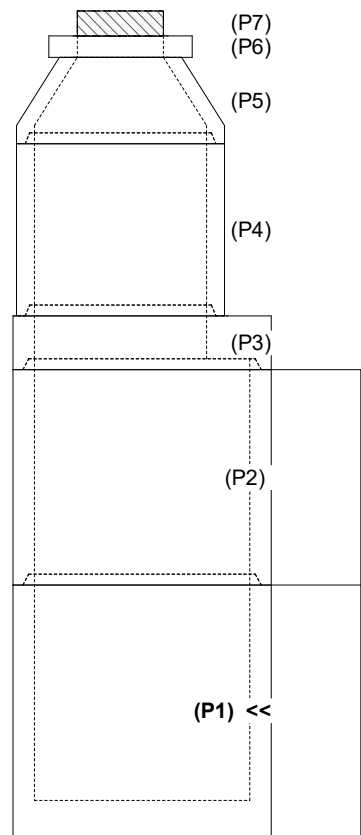
- Structure Notes:**
- PER ASTM C-478 SPECIFICATIONS
  - CONCRETE: 4,000 PSI AT 28 DAYS
  - REINFORCEMENT:
    - WALLS: PER ASTM A615 - DOUBLE MAT
    - FLOOR: #5 BAR @ 12" C.C. E.W. (GRADE 60) - 2" MIN. REBAR CLEARANCE (TYP)
  - INVERT CHANNEL REQUIRED
  - STEPS AT 90 DEGREES
  - 7" CASTING SUPPLIED BY OTHERS
  - EXTERIOR DROP AT INVERTS 3 & 4 SUPPLIED BY ICAST

Rim: 751.8' Rim to Invert: 18.21' Slack: 1.52" Sump: 3" Step Position: 90°

Position	Elev	Angle	Ext. (cw)	Pipe	Pipe OD	Connector	Hole	Horz Size	Up ( )	Offset
Invert 1	733.59'	0°	0"	36" PVC SDR35/F679	38.3"	A-Lok 1235	39.88"	43.623"	1.125"	0"
Invert 2	733.69'	180°	113.125"	36" PVC SDR35/F679	38.3"	A-Lok 1235	39.88"	43.623"	2.25"	0"
Invert 3										
Invert 4	735.39'	266°	167.125"	8" PVC SDR35	8.5"	Drop Elbow 8" PVC	8.5"	8.529"	24.375"	0"
Invert 5										
Invert 6										
Invert 7										
Invert 8										

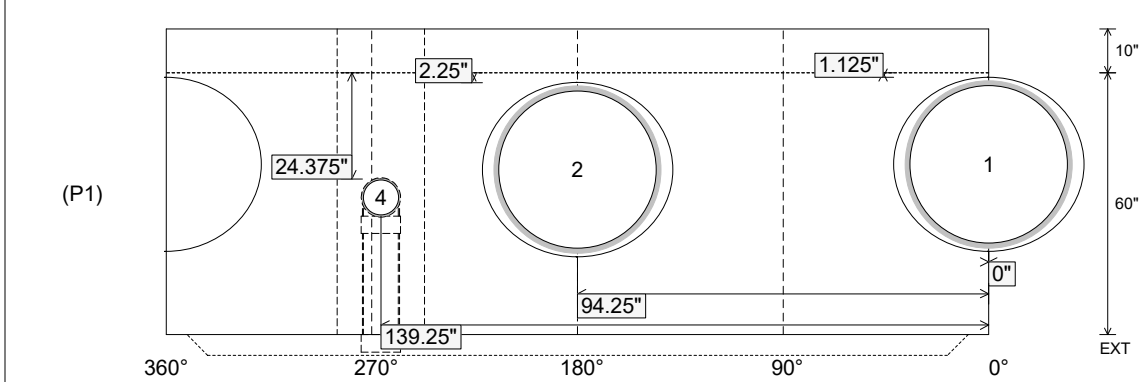
RIGHT-SIDE UP VIEW (int. dimensions)

UPSIDE-DOWN VIEW (int. dimenions)



INVERT CHANNEL DRAWING

INSIDE WALL DIMENSIONS



Coating (Int): Coating (Ext):	Seam Up: Tongue Seam Dn: n/a	Wall Thickness: 6" Floor Height: 10"	Height (Int): 60" Height (Ext): 70"	Weight (Net): 11306 lb Volume (Net): 2.89cu.yd
----------------------------------	---------------------------------	---	--	---