

Structure ID: 2301537

P1 MH072BAVF

MH BASE (10"F) Custom Ht T/n

P6) 24" - CASTING HEIGHT - 7" P5) 48" - CON CONE w/24" HOLE F/G - 24" P4) 48" - MH RISER T/G - 48" P3) 48" - MH RISER T/G - 60" P2) 72" - MH Transition Slab 48" Hole T/G - 15" P1) 72" - MH BASE (10"F) Custom Ht T/n - 76" 1) 72" - MH INVERT CHANNEL - FULL HEIGHT 1) 72" - Conseal CS-102 1.00" (Double) 3) 48" - Conseal CS-102 1.00" (Double) 2) A-Lok - 1235 1) PSX - 12-08 NYLO 18) MH Step ML-10-TDS-NCR - 10"	0 lb 2252 lb 3353 lb 4192 lb 3864 lb 14346 lb 5422 lb 0 lb 0 lb 2 lb 8 lb 0 lb ----- Structure Total: 33439 lb
--	---

Structure Notes:

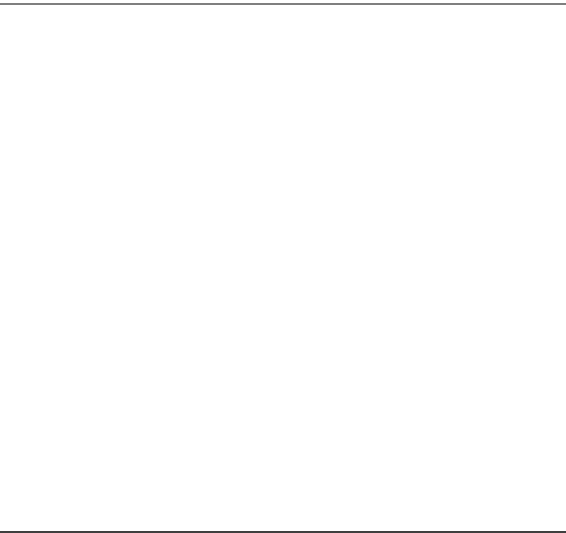
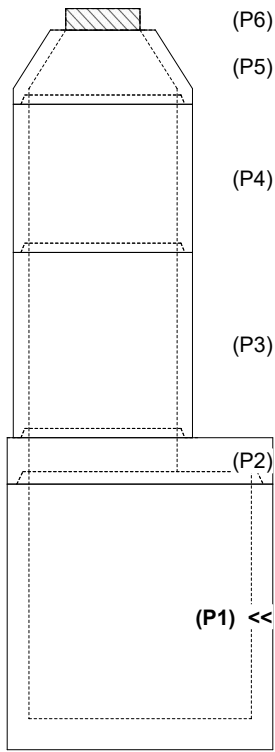
1. PER ASTM C-478 SPECIFICATIONS
2. CONCRETE: 4,000 PSI AT 28 DAYS
3. REINFORCEMENT:
 - WALLS: PER ASTM A615 - DOUBLE MAT
 - FLOOR: #5 BAR @ 12" C.C. E.W. (GRADE 60) - 2" MIN. REBAR CLEARANCE (TYP)
4. INVERT CHANNEL REQUIRED
5. STEPS AT 90 DEGREES
6. 7" CASTING SUPPLIED BY OTHERS

Rim: 750.63' Rim to Invert: 19.12' Slack: 2.44" Sump: 3" Step Position: 90°

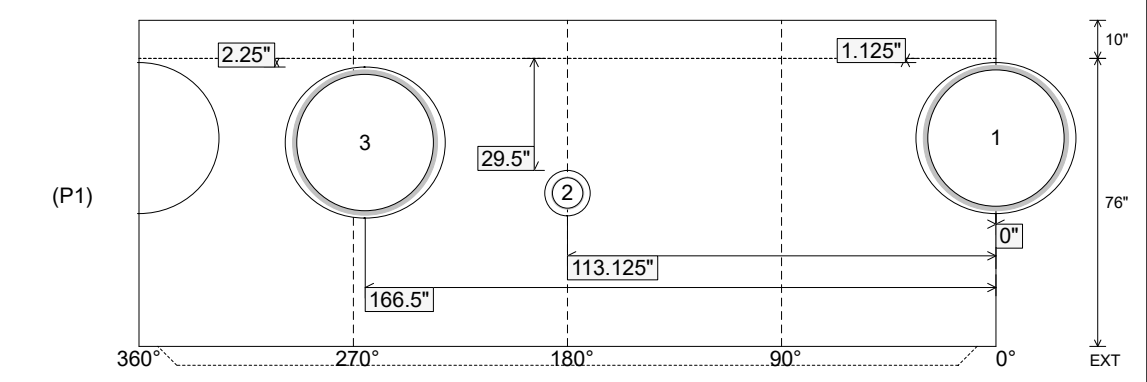
Position	Elev	Angle	Ext. (cw)	Pipe	Pipe OD	Connector	Hole	Horz Size	Up (↓)	Offset
Invert 1	731.51'	0°	0"	36" PVC SDR35/F679	38.3"	A-Lok 1235	39.88"	42.266"	1.125"	0"
Invert 2	733.89'	180°	135.125"	8" PVC SDR35	8.5"	PSX 12-08 NYLO	12"	12.056"	29.5"	0"
Invert 3	731.61'	265°	198.875"	36" PVC SDR35/F679	38.3"	A-Lok 1235	39.88"	42.266"	2.25"	0"
Invert 4										
Invert 5										
Invert 6										
Invert 7										
Invert 8										

RIGHT-SIDE UP VIEW (int. dimensions)

UPSIDE-DOWN VIEW (int. dimensions)



INSIDE WALL DIMENSIONS



Coating (Int): Coating (Ext):	Seam Up: Tongue Seam Dn: n/a	Wall Thickness: 7" Floor Height: 10"	Height (Int): 76" Height (Ext): 86"	Weight (Net): 14346 lb Volume (Net): 3.66cu.yd
----------------------------------	---------------------------------	---	--	---

Structure ID: 2301537

P1 MH072BAVF

MH BASE (10"F) Custom Ht T/n

P6) 24" - CASTING HEIGHT - 7" P5) 48" - CON CONE w/24" HOLE F/G - 24" P4) 48" - MH RISER T/G - 48" P3) 48" - MH RISER T/G - 60" P2) 72" - MH Transition Slab 48" Hole T/G - 15" P1) 72" - MH BASE (10"F) Custom Ht T/n - 76" 1) 72" - MH INVERT CHANNEL - FULL HEIGHT 1) 72" - Conseal CS-102 1.00" (Double) 3) 48" - Conseal CS-102 1.00" (Double) 2) A-Lok - 1235 1) PSX - 12-08 NYLO 18) MH Step ML-10-TDS-NCR - 10"	0 lb 2252 lb 3353 lb 4192 lb 3864 lb 14346 lb 5422 lb 0 lb 0 lb 2 lb 8 lb 0 lb ----- Structure Total: 33439 lb
--	---

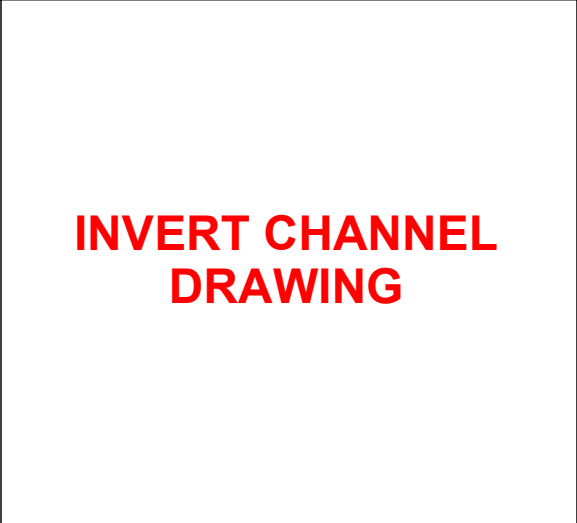
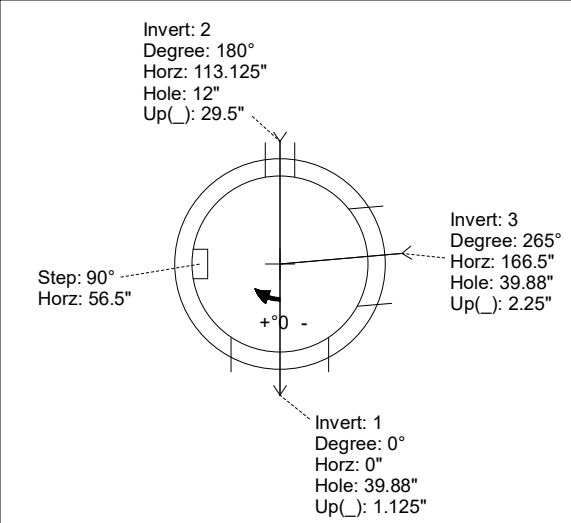
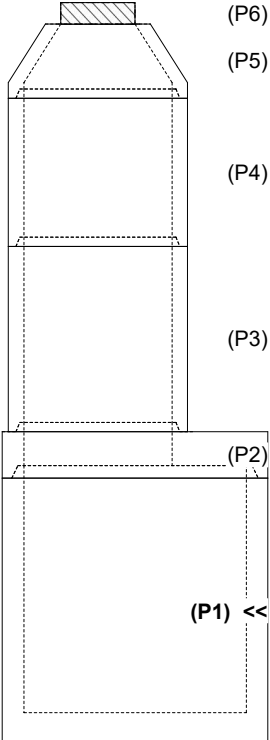
- Structure Notes:
1. PER ASTM C-478 SPECIFICATIONS
 2. CONCRETE: 4,000 PSI AT 28 DAYS
 3. REINFORCEMENT:
 - WALLS: PER ASTM A615 - DOUBLE MAT
 - FLOOR: #5 BAR @ 12" C.C. E.W. (GRADE 60) - 2" MIN. REBAR CLEARANCE (TYP)
 4. INVERT CHANNEL REQUIRED
 5. STEPS AT 90 DEGREES
 6. 7" CASTING SUPPLIED BY OTHERS

Rim: 750.63' Rim to Invert: 19.12' Slack: 2.44" Sump: 3" Step Position: 90°

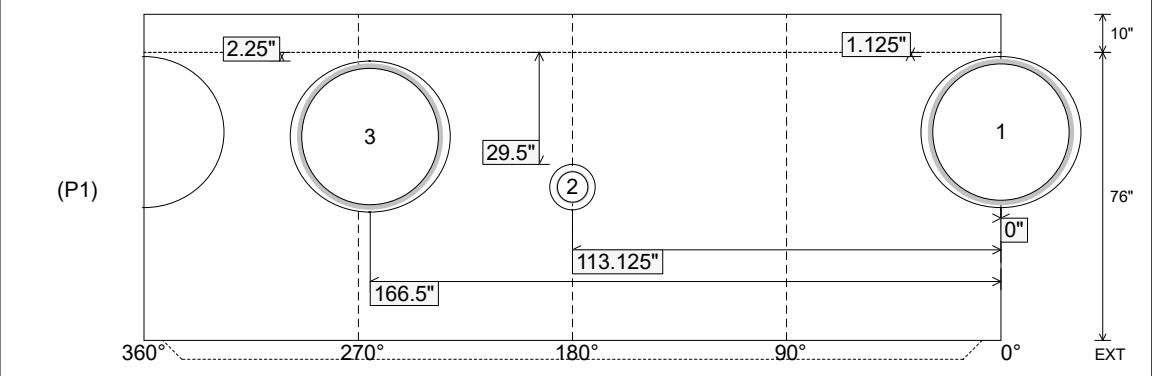
Position	Elev	Angle	Ext. (cw)	Pipe	Pipe OD	Connector	Hole	Horz Size	Up (↓)	Offset
Invert 1	731.51'	0°	0"	36" PVC SDR35/F679	38.3"	A-Lok 1235	39.88"	42.266"	1.125"	0"
Invert 2	733.89'	180°	135.125"	8" PVC SDR35	8.5"	PSX 12-08 NYLO	12"	12.056"	29.5"	0"
Invert 3	731.61'	265°	198.875"	36" PVC SDR35/F679	38.3"	A-Lok 1235	39.88"	42.266"	2.25"	0"
Invert 4										
Invert 5										
Invert 6										
Invert 7										
Invert 8										

RIGHT-SIDE UP VIEW (int. dimensions)

UPSIDE-DOWN VIEW (int. dimensions)



INSIDE WALL DIMENSIONS



Coating (Int): Coating (Ext):	Seam Up: Tongue Seam Dn: n/a	Wall Thickness: 7" Floor Height: 10"	Height (Int): 76" Height (Ext): 86"	Weight (Net): 14346 lb Volume (Net): 3.66cu.yd
----------------------------------	---------------------------------	---	--	---