

Job Name: 25-3118 - W6 Ph 2-C Force Main Improvements
Job Location: Fort Mitchell, KY 41017
Contractor: Lykins Contracting

PC: Celina Goff
 TECH: J. Horsley - A
 Plant: 100



Structure ID: **2301531**
 Spec: Sanitary
 Type: SAN.MH Transition
 Size: 60"

Rim: 739.2'
 Invert: 729.47'
 Rim to Invert: 9.73'

Sump: 3"
 Floor (Top): 729.22'
 Floor Height: 8"

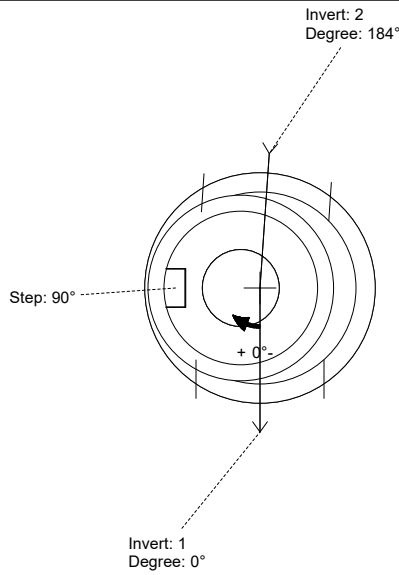
Floor (Bot): 728.553'
 Overall Height: 10.5'
 Slack: 1.76"

Structure Notes:

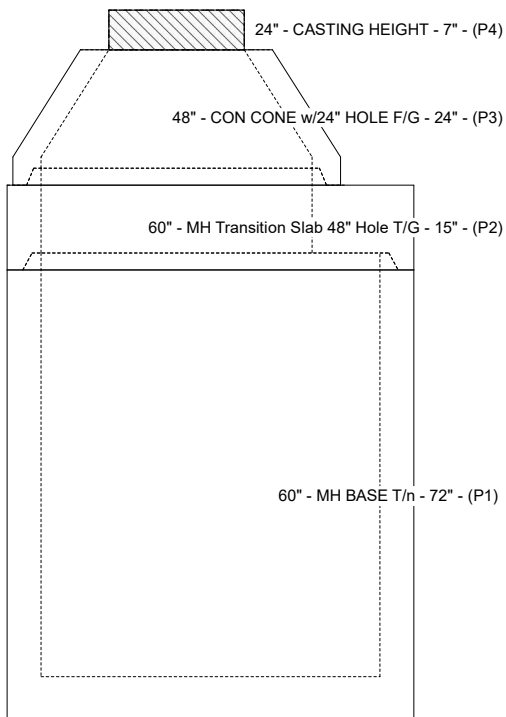
1. PER ASTM C-478 SPECIFICATIONS
2. CONCRETE: 4,000 PSI AT 28 DAYS
3. REINFORCEMENT:
 - CONE: PER ASTM A615
 - TRANSITION SLAB: #5 BAR @ 6" C.C. E.W. (GRADE 60)
 - BASE WALLS: PER ASTM A615 - DOUBLE MAT
 - BASE FLOOR: #5 BAR @ 12" C.C. E.W. (GRADE 60)
4. INVERT CHANNEL REQUIRED
5. STEPS AT 90 DEGREES
6. 7" CASTING SUPPLIED BY OTHERS

STRUCTURE SUMMARY:

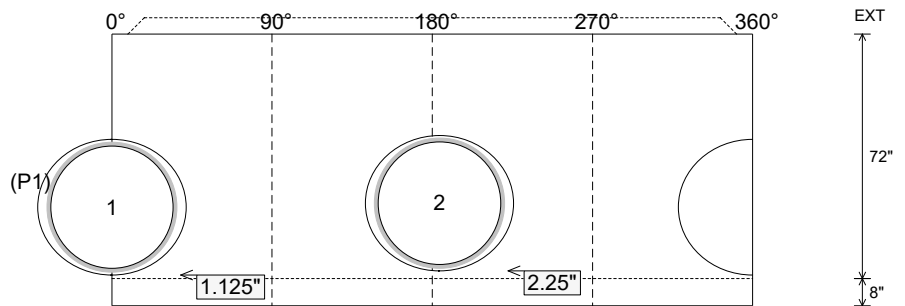
- P4) 24" - CASTING HEIGHT - 7" 0 lb
 - P3) 48" - CON CONE w/24" HOLE F/G - 24" 2252 lb
 - P2) 60" - MH Transition Slab 48" Hole T/G - 15" 2204 lb
 - P1) 60" - MH BASE T/n - 72" 8895 lb
 - 1) 60" - MH INVERT CHANNEL - FULL HEIGHT 2692 lb
 - 1) 60" - Conseal CS-102 1.00" (Double) 0 lb
 - 1) 48" - Conseal CS-102 1.00" (Double) 0 lb
 - 2) A-Lok - 1235 2 lb
 - 8) MH Step ML-10-TDS-NCR - 10" 0 lb
- Structure Total: **16045 lb**



Position	Elev	Angle	Pipe	Pipe OD	Hole	Connector	Up (")	Ref
Rim	739.2'							
Reducer	735.22'							
Invert 1	729.47'	0°	36" PVC SDR35/F679	38.3"	39.88"	A-Lok 1235	1.125"	P1
Invert 2	729.57'	184°	36" PVC SDR35/F679	38.3"	39.88"	A-Lok 1235	2.25"	P1
Invert 3								
Invert 4								
Invert 5								
Invert 6								
Invert 7								
Invert 8								



Cast (Int. Dim.) - Interior Dimensions



Submittal Drawing
 3/17/2026 12:34:48 PM

SUBMITTAL
 APPROVED BY: