

Job Name: 25-3118 - W6 Ph 2-C Force Main Improvements
 Job Location: Fort Mitchell, KY 41017
 Contractor: Lykins Contracting

Plant: 100

3/27/2026 11:41:33 AM

Tech: J. Horsley - A

PC: Celina Goff



Structure ID: 2301096

P4 MH060LD13

MH FLAT LID w/24in ECC Hole F/G

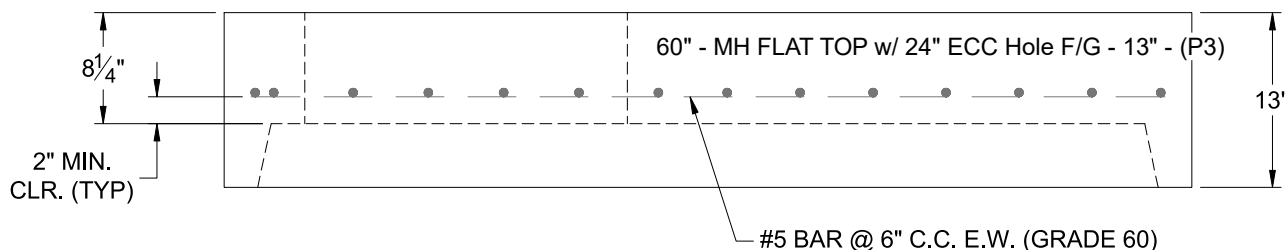
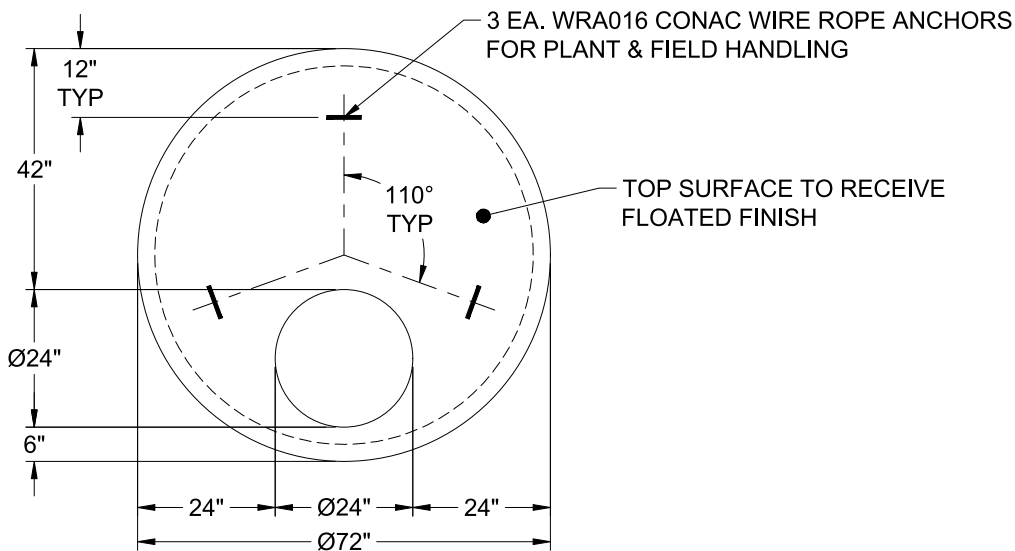
- P5) 24" - CASTING HEIGHT - 7"
- P4) 60" - MH FLAT LID w/24in ECC Hole F/G - 13"
- P3) 60" - MH RISER w/DROP Custom Ht T/G - 72"
- P2) 60" - MH RISER w/DROP Custom Ht T/G - 72"
- P1) 60" - MH BASE (10"F) w/DROP Custom Ht T/n - 46"
- 1) 60" - MH INVERT CHANNEL - FULL HEIGHT
- 1) SECONDARY POUR - Add Exterior Drop to Base (P1)
- 1) SECONDARY POUR - Add Exterior Drop to Riser (P2)
- 1) SECONDARY POUR - Add Exterior Drop to Riser (P3)
- 3) 60" - Conseal CS-102 1.00" (Double)
- 1) PSX - 16L NYLO
- 1) PSX - 12-08 NYLO
- 1) Drop Tee - 8" PVC
- 1) Drop Elbow - 8" PVC
- 16) MH Step ML-10-TDS-NCR - 10"

- 0 lb
- 2800 lb
- 7488 lb
- 7516 lb
- 10437 lb
- 2692 lb
- 2408 lb
- 3096 lb
- 3096 lb
- 0 lb
- 8 lb
- 8 lb
- 0 lb
- 0 lb
- 0 lb

Structure Total: 39549 lb

Structure Notes:

1. PER ASTM C-478 SPECIFICATIONS
2. CONCRETE: 4,000 PSI AT 28 DAYS
3. REINFORCEMENT: #5 BAR @ 6" C.C. E.W. (GRADE 60) - 2" MIN. REBAR CLEARANCE (TYP)
4. 7" CASTING SUPPLIED BY OTHERS
5. LIFTERS: 3 EA. WRA016 CONAC WIRE ROPE ANCHORS FOR PLANT & FIELD HANDLING
6. TOP SURFACE TO RECEIVE FLOATED FINISH



Coating (Int):
 Coating (Ext):

Seam Up: Flat
 Seam Dn: Groove

Wall Thickness: 6"

Height (Ext): 13"

Weight (Net): 2800 lb
 Volume (Net): 0.69cu.yd