

Job Name: 25-3118 - W6 Ph 2-C Force Main Improvements
 Job Location: Fort Mitchell, KY 41017
 Contractor: Lykins Contracting

Plant: 100

Tech: J. Horsley - A

3/26/2026 2:15:57 PM

PC: Celina Goff



Structure ID: 2301096

P2 MH060RSVF-D

MH RISER w/DROP Custom Ht T/G

- P5) 24" - CASTING HEIGHT - 7"
- P4) 60" - MH FLAT LID w/24in ECC Hole F/G - 13"
- P3) 60" - MH RISER w/DROP Custom Ht T/G - 72"
- P2) 60" - MH RISER w/DROP Custom Ht T/G - 72"
- P1) 60" - MH BASE (10"F) w/DROP Custom Ht T/n - 46"
- 1) 60" - MH INVERT CHANNEL - FULL HEIGHT
- 1) SECONDARY POUR - Add Exterior Drop to Base (P1)
- 1) SECONDARY POUR - Add Exterior Drop to Riser (P2)
- 1) SECONDARY POUR - Add Exterior Drop to Riser (P3)
- 3) 60" - Conseal CS-102 1.00" (Double)
- 1) PSX - 16L NYLO
- 1) PSX - 12-08 NYLO
- 1) Drop Tee - 8" PVC
- 1) Drop Elbow - 8" PVC
- 16) MH Step ML-10-TDS-NCR - 10"

- 0 lb
- 2800 lb
- 7488 lb
- 7516 lb
- 10437 lb
- 2692 lb
- 2408 lb
- 3096 lb
- 3096 lb
- 0 lb
- 8 lb
- 8 lb
- 0 lb
- 0 lb
- 0 lb
-

Structure Total: 39549 lb

Structure Notes:

1. PER ASTM C-478 SPECIFICATIONS
2. CONCRETE: 4,000 PSI AT 28 DAYS
3. REINFORCEMENT: PER ASTM A615
4. STEPS AT 287 DEGREES
5. 7" CASTING SUPPLIED BY OTHERS
6. EXTERIOR DROP AT INVERTS 3 & 4 SUPPLIED BY ICAST

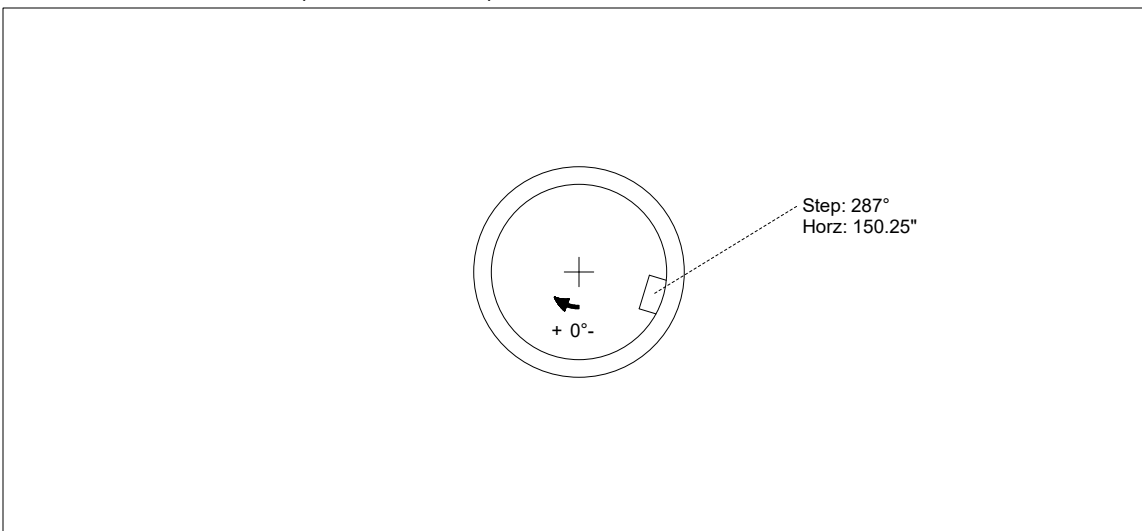
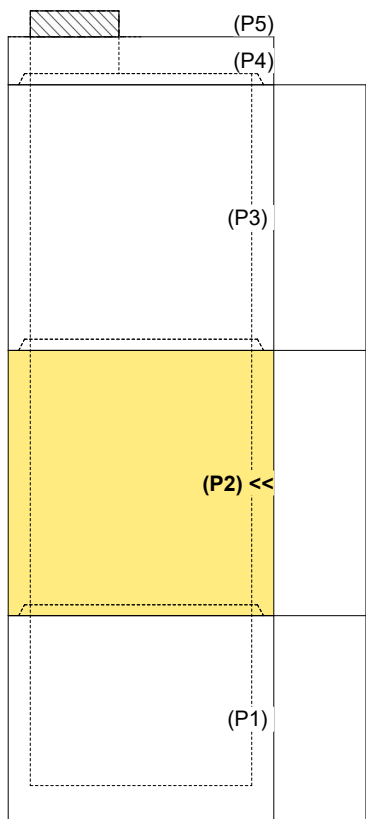
FIRST POUR (RISER): 7,516 LBS

SECOND POUR (DROP): 3,096 LBS

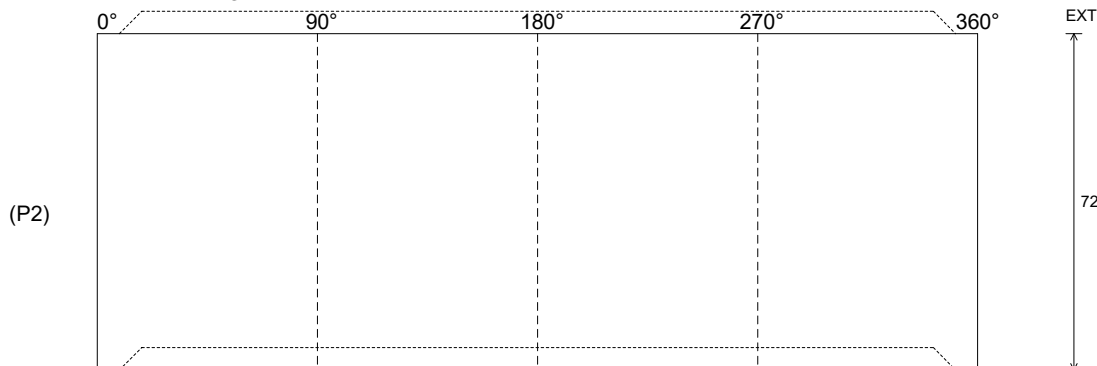
Rim: 748.88' Rim to Invert: 17.5' Slack: 2" Sump: 2" Step Position: 287°

Position	Elev	Angle	Ext. (cw)	Pipe	Pipe OD	Connector	Hole	Horz Size	Up ()	Offset
Invert 1										
Invert 2										
Invert 3										
Invert 4										
Invert 5										
Invert 6										
Invert 7										
Invert 8										

RIGHT-SIDE UP VIEW (int. dimensions)



INSIDE WALL DIMENSIONS



Coating (Int):
Coating (Ext):

Seam Up: Tongue
Seam Dn: Groove

Wall Thickness: 6"
Floor Height: 0"

Height (Int): 72"
Height (Ext): 72"

Weight (Net): 7516 lb
Volume (Net): 1.92cu.yd

Job Name: 25-3118 - W6 Ph 2-C Force Main Improvements
 Job Location: Fort Mitchell, KY 41017
 Contractor: Lykins Contracting

Plant: 100

Tech: J. Horsley - A

3/26/2026 2:15:57 PM

PC: Celina Goff



Structure ID: 2301096

P2 MH060RSVF-D

MH RISER w/DROP Custom Ht T/G

- P5) 24" - CASTING HEIGHT - 7"
- P4) 60" - MH FLAT LID w/24in ECC Hole F/G - 13"
- P3) 60" - MH RISER w/DROP Custom Ht T/G - 72"
- P2) 60" - MH RISER w/DROP Custom Ht T/G - 72"
- P1) 60" - MH BASE (10"F) w/DROP Custom Ht T/n - 46"
- 1) 60" - MH INVERT CHANNEL - FULL HEIGHT
- 1) SECONDARY POUR - Add Exterior Drop to Base (P1)
- 1) SECONDARY POUR - Add Exterior Drop to Riser (P2)
- 1) SECONDARY POUR - Add Exterior Drop to Riser (P3)
- 3) 60" - Conseal CS-102 1.00" (Double)
- 1) PSX - 16L NYLO
- 1) PSX - 12-08 NYLO
- 1) Drop Tee - 8" PVC
- 1) Drop Elbow - 8" PVC
- 16) MH Step ML-10-TDS-NCR - 10"

- 0 lb
- 2800 lb
- 7488 lb
- 7516 lb
- 10437 lb
- 2692 lb
- 2408 lb
- 3096 lb
- 3096 lb
- 0 lb
- 8 lb
- 8 lb
- 0 lb
- 0 lb
- 0 lb
- 0 lb
-
- Structure Total: 39549 lb

Structure Notes:

1. PER ASTM C-478 SPECIFICATIONS
2. CONCRETE: 4,000 PSI AT 28 DAYS
3. EXTERIOR DROP REINFORCEMENT: DRILL & STUB #4 BAR @ 12" C.C. E.W. (GRADE 60) - 2" MIN. REBAR CLEARANCE (TYP)
4. STEPS AT 287 DEGREES
5. 7" CASTING SUPPLIED BY OTHERS
6. EXTERIOR DROP AT INVERTS 3 & 4 SUPPLIED BY ICAST
7. ADD 8" SDR 35 DROP AT 214°

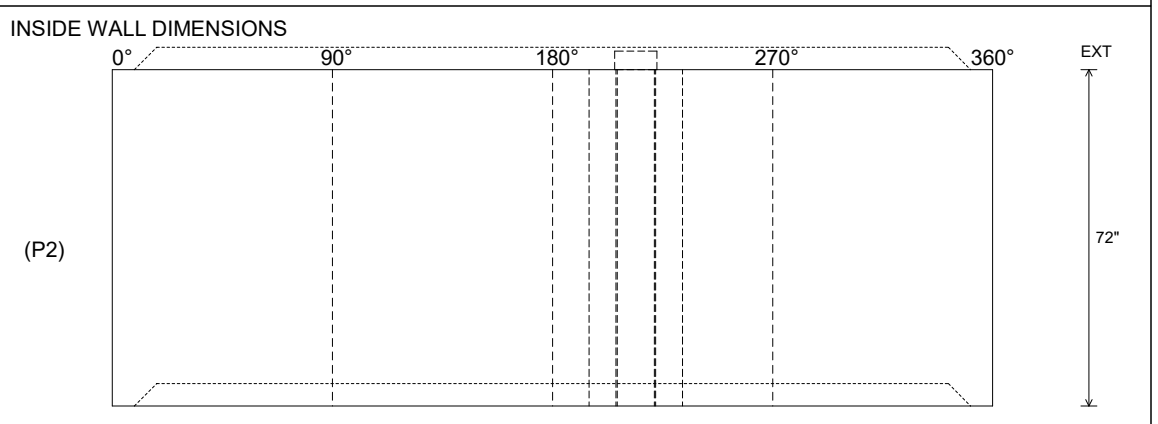
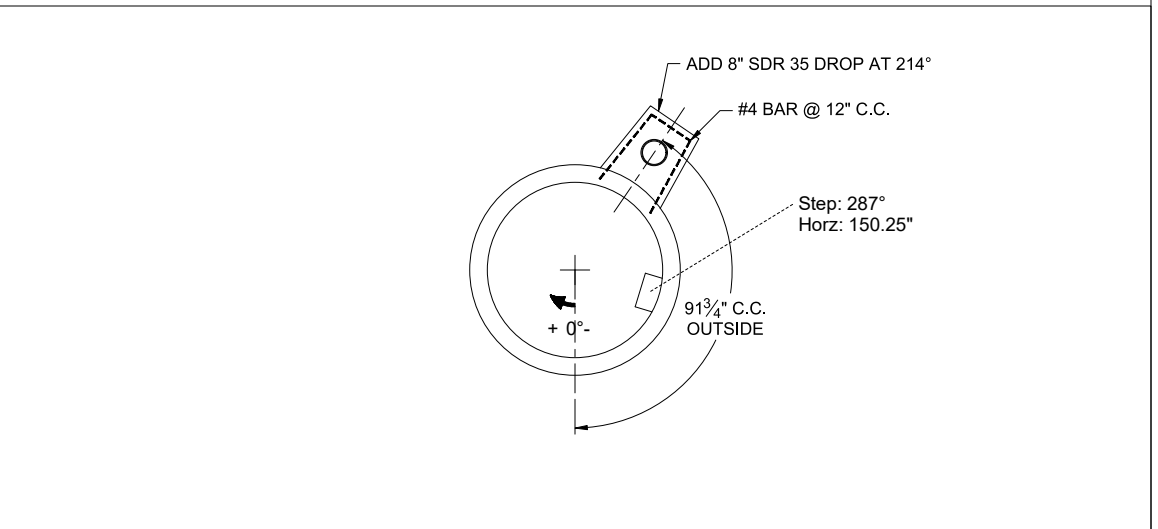
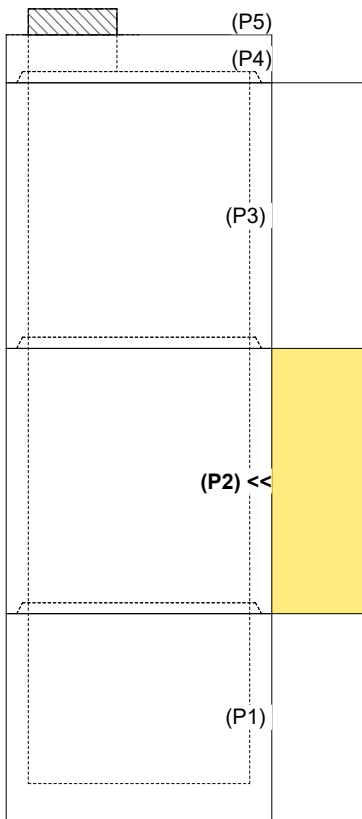
FIRST POUR (RISER): 7,516 LBS
SECOND POUR (DROP): 3,096 LBS

Structure Total: 39549 lb

Rim: 748.88' Rim to Invert: 17.5' Slack: 2" Sump: 2" Step Position: 287°

Position	Elev	Angle	Ext. (cw)	Pipe	Pipe OD	Connector	Hole	Horz Size	Up ()	Offset
Invert 1										
Invert 2										
Invert 3										
Invert 4										
Invert 5										
Invert 6										
Invert 7										
Invert 8										

RIGHT-SIDE UP VIEW (int. dimensions)



Coating (Int): Coating (Ext):	Seam Up: Tongue Seam Dn: Groove	Wall Thickness: 6" Floor Height: 0"	Height (Int): 72" Height (Ext): 72"	Weight (Net): 7516 lb Volume (Net): 1.92cu.yd
----------------------------------	------------------------------------	--	--	--