

Job Name: 25-3118 - W6 Ph 2-C Force Main Improvements
Job Location: Fort Mitchell, KY 41017
Contractor: Lykins Contracting

PC: Celina Goff
 TECH: J. Horsley - A
 Plant: 100



Structure ID: **2280823**
 Spec: Sanitary
 Type: SAN.MH
 Size: 48"

Rim: 771.03'
 Invert: 764.37'
 Rim to Invert: 6.66'

Sump: 2.309"
 Floor (Top): 764.178'
 Floor Height: 8"

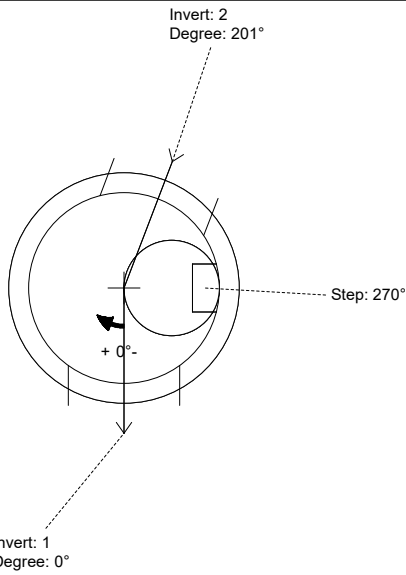
Floor (Bot): 763.511'
 Overall Height: 7.25'
 Slack: 3.23"

Structure Notes:

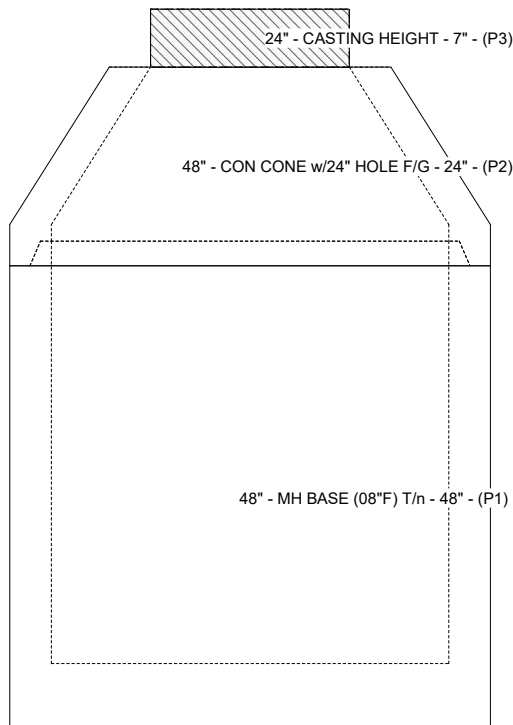
1. PER ASTM C-478 SPECIFICATIONS
2. CONCRETE: 4,000 PSI AT 28 DAYS
3. REINFORCEMENT:
 - CONE: PER ASTM A615
 - BASE WALLS: PER ASTM A615 - DOUBLE MAT
 - BASE FLOOR: #5 BAR @ 12" C.C. E.W. (GRADE 60)
4. INVERT CHANNEL REQUIRED
5. STEPS AT 270 DEGREES
6. 7" CASTING SUPPLIED BY OTHERS

STRUCTURE SUMMARY:

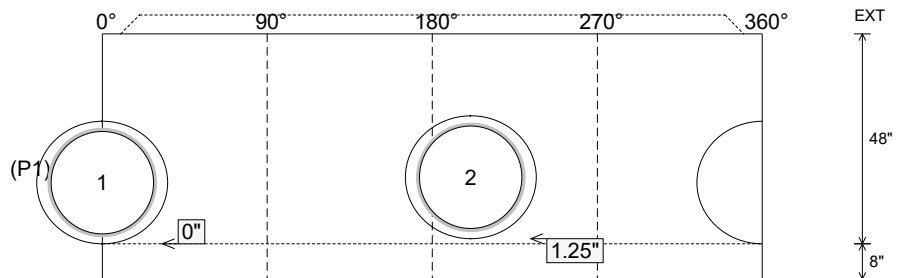
- P3) 24" - CASTING HEIGHT - 7" 0 lb
 - P2) 48" - CON CONE w/24" HOLE F/G - 24" 2252 lb
 - P1) 48" - MH BASE (08"F) T/n - 48" 4581 lb
 - 1) 48" - MH INVERT CHANNEL - FULL HEIGHT 1440 lb
 - 1) 48" - Conseal CS-102 1.00" (Double) 0 lb
 - 2) Kor-N-Seal2 - S206-28 13 lb
 - 4) MH Step ML-10-TDS-NCR - 10" 0 lb
- Structure Total: **8286 lb**



Position	Elev	Angle	Pipe	Pipe OD	Hole	Connector	Up ()	Ref
Rim	771.03'							
Reducer								
Invert 1	764.37'	0°	24" PVC SDR35/F679	24.803"	28"	Kor-N-Seal2 S206-28	0"	P1
Invert 2	764.47'	201°	24" PVC SDR35/F679	24.803"	28"	Kor-N-Seal2 S206-28	1.25"	P1
Invert 3								
Invert 4								
Invert 5								
Invert 6								
Invert 7								
Invert 8								



Cast (Int. Dim.) - Interior Dimensions



Submittal Drawing
 3/17/2026 12:36:28 PM

SUBMITTAL
 APPROVED BY: