

**Job Name: 25-3118 - W6 Ph 2-C Force Main Improvements**  
**Job Location: Fort Mitchell, KY 41017**  
**Contractor: Lykins Contracting**

PC: Celina Goff  
 TECH: J. Horsley - A  
 Plant: 100

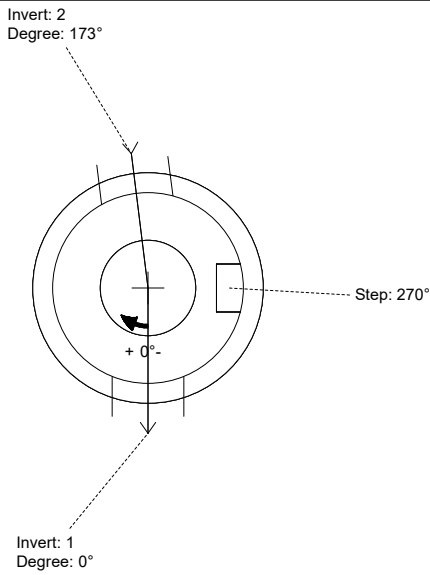


Structure ID: **1750297**  
 Spec: Sanitary Rim: 769.12'  
 Type: SAN.MH Invert: 759.62'  
 Size: 48" Rim to Invert: 9.5' Sump: 2"  
 Floor (Top): 759.453'  
 Floor Height: 8' Floor (Bot): 758.786'  
 Overall Height: 10.083'  
 Slack: 3"

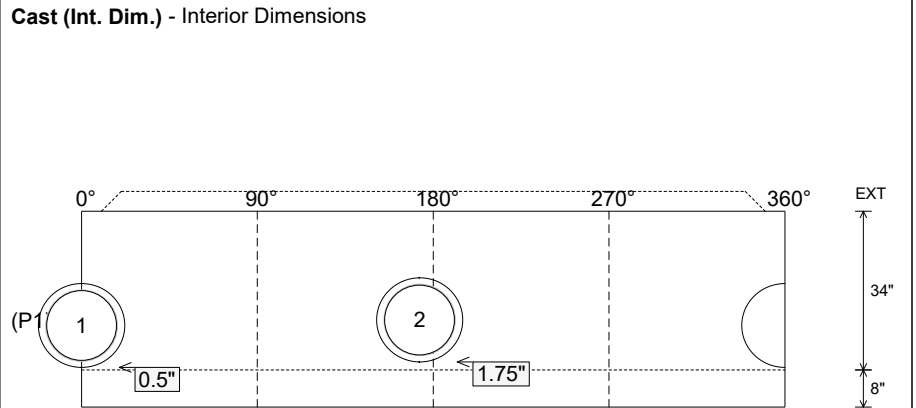
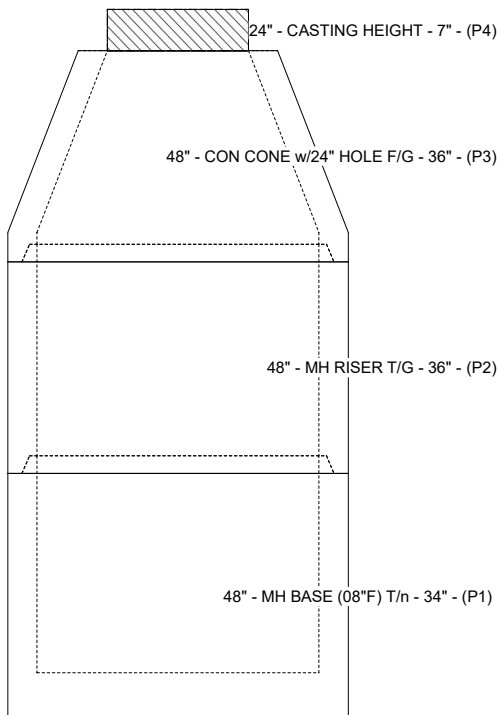
- Structure Notes:**
- PER ASTM C-478 SPECIFICATIONS
  - CONCRETE: 4,000 PSI AT 28 DAYS
  - REINFORCEMENT:
    - CONE & RISER: PER ASTM A615
    - BASE WALLS: PER ASTM A615 - DOUBLE MAT
    - BASE FLOOR: #5 BAR @ 12" C.C. E.W. (GRADE 60)
  - INVERT CHANNEL REQUIRED
  - STEPS AT 270 DEGREES
  - 7" CASTING SUPPLIED BY OTHERS

**STRUCTURE SUMMARY:**

P4) 24" - CASTING HEIGHT - 7"	0 lb
P3) 48" - CON CONE w/24" HOLE F/G - 36"	2252 lb
P2) 48" - MH RISER T/G - 36"	2515 lb
P1) 48" - MH BASE (08°F) T/n - 34"	3931 lb
1) 48" - MH INVERT CHANNEL - FULL HEIGHT	1440 lb
2) 48" - Conseal CS-102 1.00" (Double)	0 lb
2) Kor-N-Seal2 - S206-18L	12 lb
7) MH Step ML-10-TDS-NCR - 10"	0 lb
<b>Structure Total:</b>	<b>10150 lb</b>



Position	Elev	Angle	Pipe	Pipe OD	Hole	Connector	Up (L)	Ref
Rim	769.12'							
Reducer								
Invert 1	759.62'	0°	15" PVC SDR35	15.3"	18"	Kor-N-Seal2 S206-18L	0.5"	P1
Invert 2	759.72'	173°	15" PVC SDR35	15.3"	18"	Kor-N-Seal2 S206-18L	1.75"	P1
Invert 3								
Invert 4								
Invert 5								
Invert 6								
Invert 7								
Invert 8								



Submittal Drawing  
 3/17/2026 12:36:44 PM

SUBMITTAL  
 APPROVED BY: