

Job Name: 25-3118 - W6 Ph 2-C Force Main Improvements
 Job Location: Fort Mitchell, KY 41017
 Contractor: Lykins Contracting

Plant: 100

Tech: J. Horsley - A

3/20/2026 1:22:24 PM

PC: Celina Goff



Structure ID: 1750296

P1 MH048BAVF-D

MH BASE (08"F) w/DROP Custom Ht T/n

- P3) 24" - CASTING HEIGHT - 7"
- P2) 48" - CON CONE w/24" HOLE F/G - 24"
- P1) 48" - MH BASE (08"F) w/DROP Custom Ht T/n - 70"
- 1) 48" - MH INVERT CHANNEL - FULL HEIGHT
- 1) 48" - Conseal CS-102 1.00" (Double)
- 2) Kor-N-Seal2 - S206-18L
- 1) Drop Tee - 12" PVC
- 1) Drop Elbow - 12" PVC
- 8) MH Step ML-10-TDS-NCR - 10"

0 lb
 2252 lb
 13059 lb
 1440 lb
 0 lb
 12 lb
 0 lb
 0 lb
 0 lb
 0 lb

 Structure Total: 16763 lb

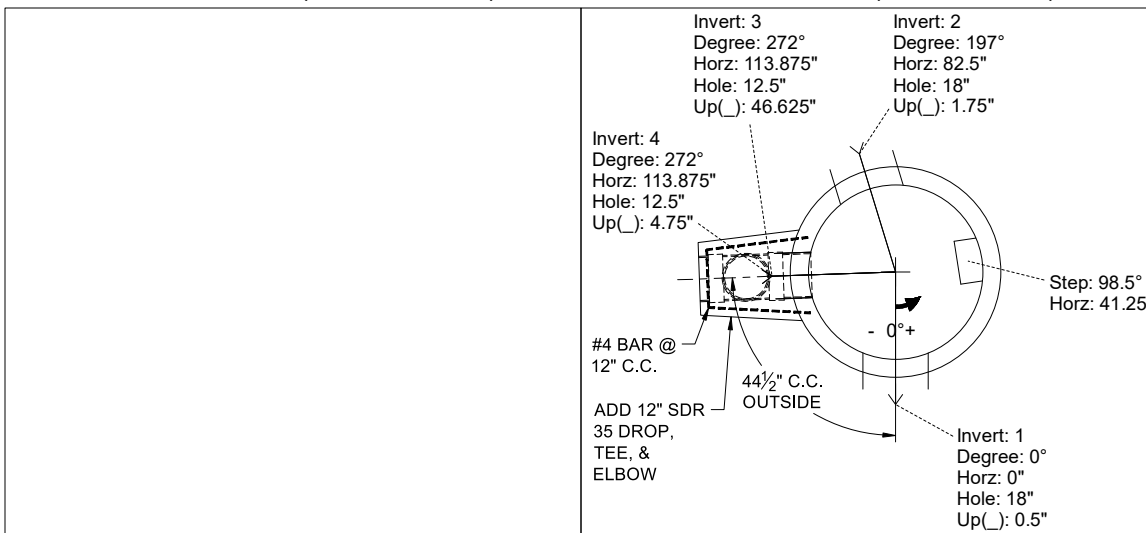
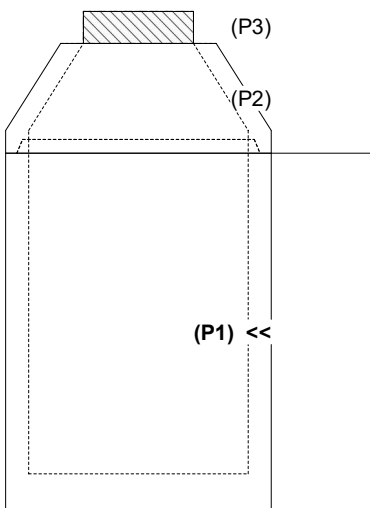
- Structure Notes:**
1. PER ASTM C-478 SPECIFICATIONS
 2. CONCRETE: 4,000 PSI AT 28 DAYS
 3. BASE REINFORCEMENT:
 - WALLS: PER ASTM A615 - DOUBLE MAT
 - FLOOR: #5 BAR @ 12" C.C. E.W. (GRADE 60) - 2" MIN. REBAR CLEARANCE (TYP)
 4. EXTERIOR DROP REINFORCEMENT: #4 BAR @ 12" C.C. E.W. (GRADE 60) - 2" MIN. REBAR CLEARANCE (TYP)
 5. INVERT CHANNEL REQUIRED
 6. STEPS AT 98.5 DEGREES
 7. 7" CASTING SUPPLIED BY OTHERS
 8. EXTERIOR DROP AT INVERTS 3 & 4 SUPPLIED BY ICAST
 9. ADD 12" SDR 35 DROP, TEE AT INVERT 3 (272°), & DROP AT INVERT 4 (272°)

Rim: 766.03' Rim to Invert: 8.3' Slack: 0.6" Sump: 2" Step Position: 98.5°

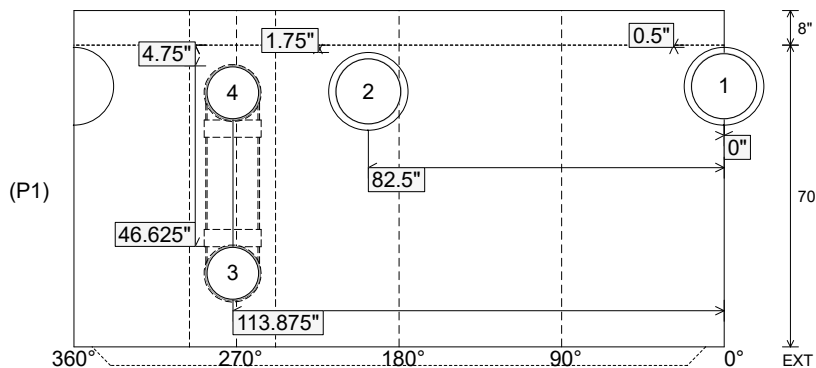
Position	Elev	Angle	Ext. (cw)	Pipe	Pipe OD	Connector	Hole	Horz Size	Up ()	Offset
Invert 1	757.73'	0°	0"	15" PVC SDR35	15.3"	Kor-N-Seal2 S206-18L	18"	18.451"	0.5"	0"
Invert 2	757.83'	197°	99.75"	15" PVC SDR35	15.3"	Kor-N-Seal2 S206-18L	18"	18.451"	1.75"	0"
Invert 3	761.47'	272°	137.625"	12" PVC SDR35	12.5"	Drop Tee 12" PVC	12.5"	12.646"	46.625"	0"
Invert 4	757.98'	272°	137.625"	12" PVC SDR35	12.5"	Drop Elbow 12" PVC	12.5"	12.646"	4.75"	0"
Invert 5										
Invert 6										
Invert 7										
Invert 8										

RIGHT-SIDE UP VIEW (int. dimensions)

UPSIDE-DOWN VIEW (int. dimensions)



INSIDE WALL DIMENSIONS



Coating (Int):
 Coating (Ext):

Seam Up: Tongue
 Seam Dn: n/a

Wall Thickness: 5"
 Floor Height: 8"

Height (Int): 70"
 Height (Ext): 78"

Weight (Net): 9705 lb
 Volume (Net): 2.48cu.yd

Structure ID: 1750296

P1 MH048BAVF-D

MH BASE (08"F) w/DROP Custom Ht T/n

P3) 24" - CASTING HEIGHT - 7" P2) 48" - CON CONE w/24" HOLE F/G - 24" P1) 48" - MH BASE (08"F) w/DROP Custom Ht T/n - 70" 1) 48" - MH INVERT CHANNEL - FULL HEIGHT 1) 48" - Conseal CS-102 1.00" (Double) 2) Kor-N-Seal2 - S206-18L 1) Drop Tee - 12" PVC 1) Drop Elbow - 12" PVC 8) MH Step ML-10-TDS-NCR - 10"	0 lb 2252 lb 13059 lb 1440 lb 0 lb 12 lb 0 lb 0 lb 0 lb 0 lb ----- Structure Total: 16763 lb
--	---

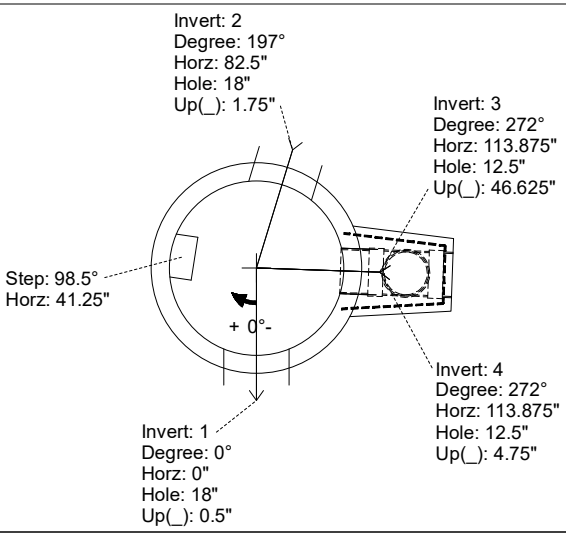
- Structure Notes:**
1. PER ASTM C-478 SPECIFICATIONS
 2. CONCRETE: 4,000 PSI AT 28 DAYS
 3. REINFORCEMENT:
 - WALLS: PER ASTM A615 - DOUBLE MAT
 - FLOOR: #5 BAR @ 12" C.C. E.W. (GRADE 60) - 2" MIN. REBAR CLEARANCE (TYP)
 4. INVERT CHANNEL REQUIRED
 5. STEPS AT 98.5 DEGREES
 6. 7" CASTING SUPPLIED BY OTHERS
 7. EXTERIOR DROP AT INVERTS 3 & 4 SUPPLIED BY ICAST

Rim: 766.03' Rim to Invert: 8.3' Slack: 0.6" Sump: 2" Step Position: 98.5°

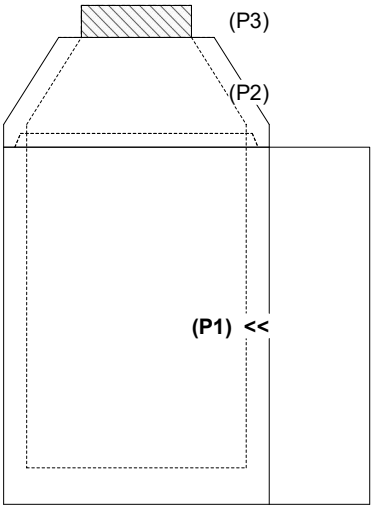
Position	Elev	Angle	Ext. (cw)	Pipe	Pipe OD	Connector	Hole	Horz Size	Up ()	Offset
Invert 1	757.73'	0°	0"	15" PVC SDR35	15.3"	Kor-N-Seal2 S206-18L	18"	18.451"	0.5"	0"
Invert 2	757.83'	197°	99.75"	15" PVC SDR35	15.3"	Kor-N-Seal2 S206-18L	18"	18.451"	1.75"	0"
Invert 3	761.47'	272°	137.625"	12" PVC SDR35	12.5"	Drop Tee 12" PVC	12.5"	12.646"	46.625"	0"
Invert 4	757.98'	272°	137.625"	12" PVC SDR35	12.5"	Drop Elbow 12" PVC	12.5"	12.646"	4.75"	0"
Invert 5										
Invert 6										
Invert 7										
Invert 8										

RIGHT-SIDE UP VIEW (int. dimensions)

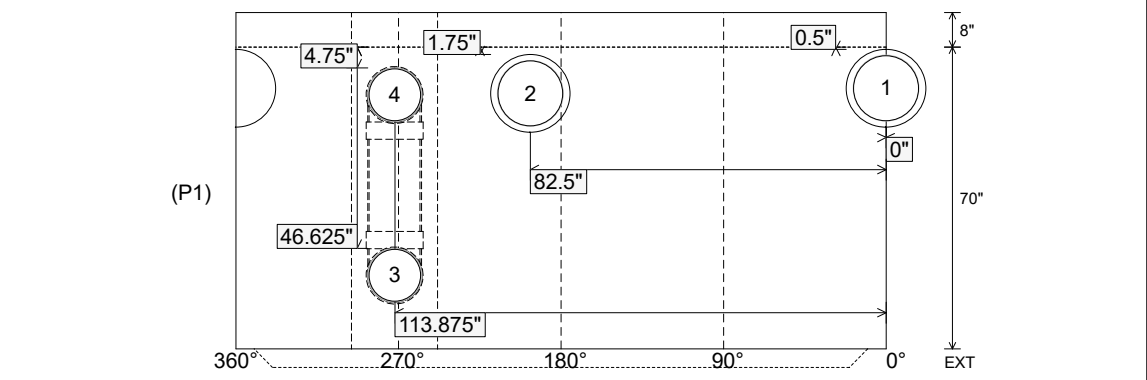
UPSIDE-DOWN VIEW (int. dimenions)



INVERT CHANNEL DRAWING



INSIDE WALL DIMENSIONS



Coating (Int): Coating (Ext):	Seam Up: Tongue Seam Dn: n/a	Wall Thickness: 5" Floor Height: 8"	Height (Int): 70" Height (Ext): 78"	Weight (Net): 9705 lb Volume (Net): 2.48cu.yd
----------------------------------	---------------------------------	--	--	--