

Job Name: 25-3113 ADS Project Smash
 Job Location: Nashville, TN
 Contractor: ADS Advances Drainage Systems, Inc.

Plant: Beaver Dam
 11/10/2025 2:18:48 PM

Tech: J. Coppage
 PC: C. Goff



Structure ID: WQU-2

P6 MH120LD18

MH FLAT LID w/24in CON Hole

- P7) 24" - CASTING HEIGHT - 7"
- P6) 120" - MH FLAT LID w/24in CON Hole - 18"
- P5) 120" - MH RISER NO STEPS - 66"
- P4) 120" - MH RISER NO STEPS - 96"
- P3) 120" - MH RISER NO STEPS - 96"
- P2) 120" - MH RISER NO STEPS - 24"
- P1) 120" - MH MONOBASE 14F, Custom Ht - 27"
- 1) ASSEMBLY REQUIRED
- 1) SECONDARY POUR
- 5) 120" - SGL 1"x14.5' Butyl (3x)
- 2) Hole - 40

0 lb
 16678 lb
 25072 lb
 34109 lb
 36468 lb
 9117 lb
 28861 lb
 0 lb
 0 lb
 0 lb
 0 lb

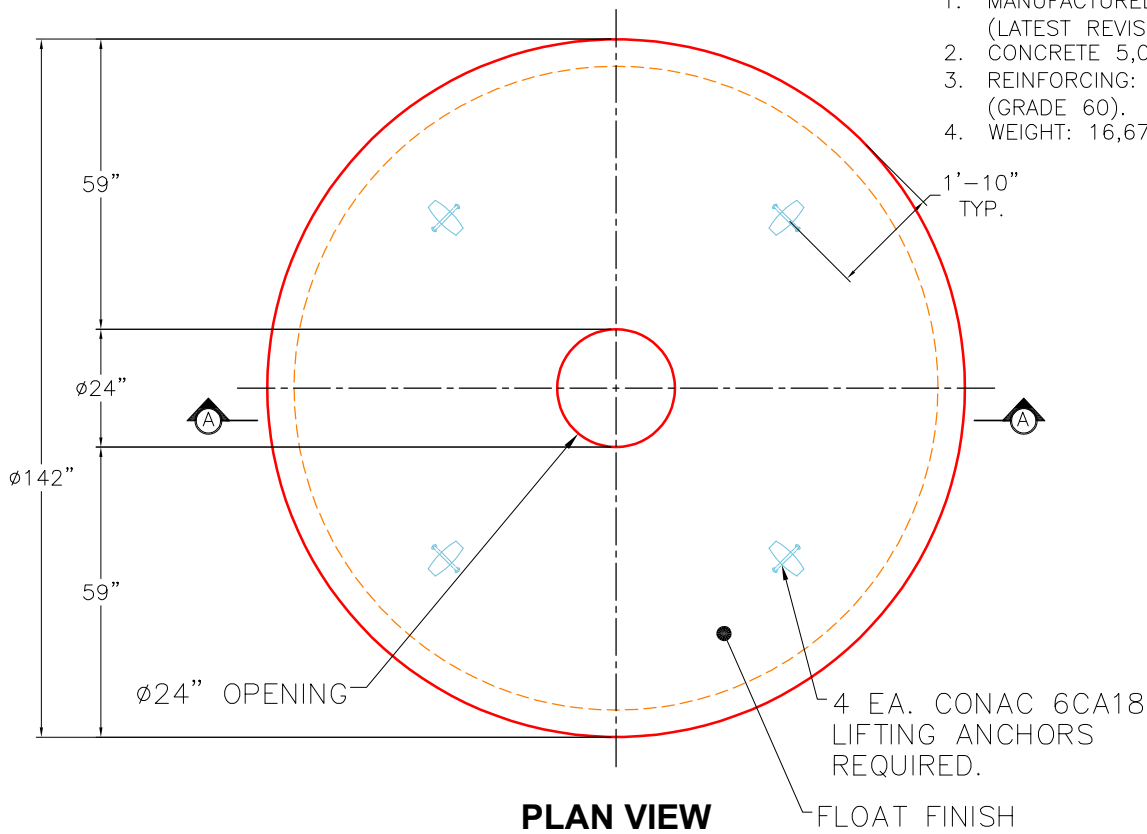
 Structure Total: 150305 lb

Structure Notes:

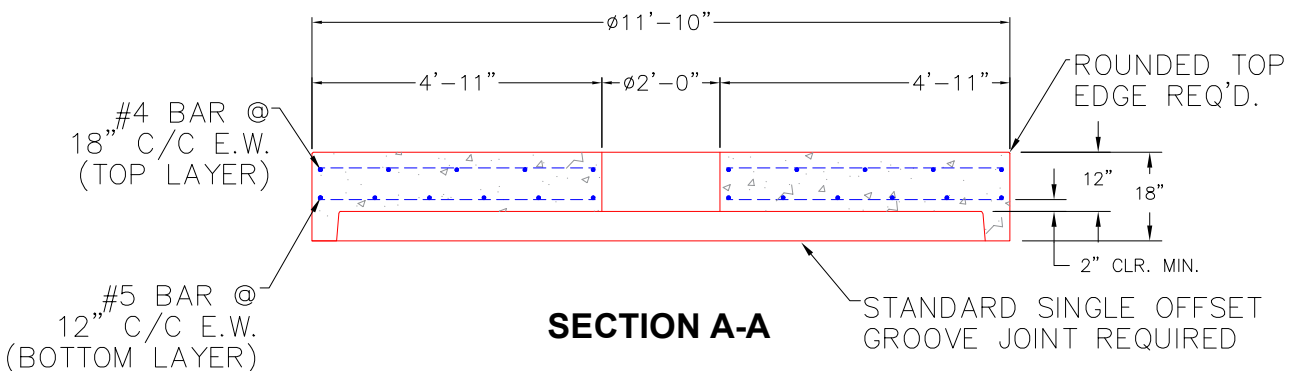
1. JR HOE MC-375 STORM PROVIDED BY ICAST.
2. PER ASTM C478 SPECIFICATIONS.
3. CONCRETE = 4,000 PSI AT 28 DAYS.
4. REINFORCING PER ASTM A615 (GRADE 60).
 - RISER/WALLS (As .36)
 - FLOOR (As .47) #5 BARS AT 8" C.C.E.W.
5. LIFTING ANCHORS TO BE INSTALLED ON THE OUTSIDE OF THE STRUCTURE.
6. INTERNAL COMPONENTS TO BE INSTALLED IN THE FIELD.

GENERAL NOTES:

1. MANUFACTURED TO ASTM C-478 (LATEST REVISION).
2. CONCRETE 5,000 PSI AT 28 DAYS.
3. REINFORCING: #4 & #5 BAR AS SHOWN (GRADE 60).
4. WEIGHT: 16,678 LBS.



PLAN VIEW



SECTION A-A

Coating (Int):
 Coating (Ext):

Seam Up: Flat
 Seam Dn: Groove

Wall Thickness: 11"

Height (Ext): 18"

Weight (Net): 16678 lb
 Volume (Net): 4.26cu.yd