

Job Name: 25-3113 ADS Project Smash
 Job Location: Nashville, TN
 Contractor: ADS Advances Drainage Systems, Inc.

Plant: Beaver Dam
 11/10/2025 1:53:34 PM

Tech: J. Coppage
 PC: C. Goff



Structure ID: WQU-2

P1 MH120BVF

MH MONOBASE 14F, Custom Ht

- P7) 24" - CASTING HEIGHT - 7"
- P6) 120" - MH FLAT LID w/24in CON Hole - 18"
- P5) 120" - MH RISER NO STEPS - 66"
- P4) 120" - MH RISER NO STEPS - 96"
- P3) 120" - MH RISER NO STEPS - 96"
- P2) 120" - MH RISER NO STEPS - 24"
- P1) 120" - MH MONOBASE 14F, Custom Ht - 27"
- 1) ASSEMBLY REQUIRED
- 1) SECONDARY POUR
- 5) 120" - SGL 1"x14.5' Butyl (3x)
- 2) Hole - 40

0 lb
 16678 lb
 25072 lb
 34109 lb
 36468 lb
 9117 lb
 28861 lb
 0 lb
 0 lb
 0 lb
 0 lb

 Structure Total: 150305 lb

Structure Notes:

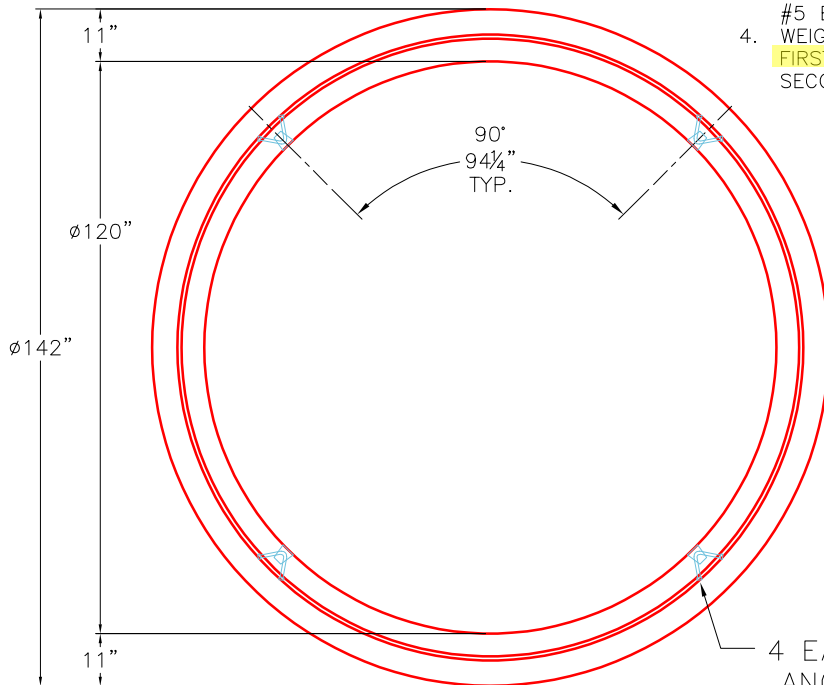
1. JR HOE MC-375 STORM PROVIDED BY ICAST.
2. PER ASTM C478 SPECIFICATIONS.
3. CONCRETE = 4,000 PSI AT 28 DAYS.
4. REINFORCING PER ASTM A615 (GRADE 60).
 - TOP SLAB (As .62) #5 BARS AT 6" C.C.E.W..
 - RISER/WALLS (As .36)
5. LIFTING ANCHORS TO BE INSTALLED ON THE OUTSIDE OF THE STRUCTURE.
6. INTERNAL COMPONENTS TO BE INSTALLED IN THE FIELD.

Rim: 564.87' Rim to Invert: 14.54' Slack: 2.48" Sump: 162" Step Position:

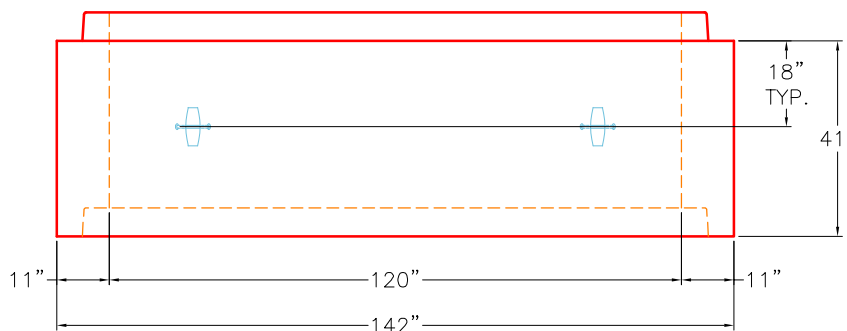
FIRST POUR DRAWING

GENERAL NOTES:

1. MANUFACTURED TO ASTM C-478 (LATEST REVISION).
2. CONCRETE 5,000 PSI AT 28 DAYS.
3. REINFORCING: TOP AND BOTTOM MAT #5 BAR @ 8" C-C E.W. (GRADE 60).
4. WEIGHT: 28,861 LBS TOTAL
FIRST POUR: 15,575 LBS
 SECOND POUR: 13,286 LBS



TOP VIEW



FRONT VIEW

Coating (Int):
 Coating (Ext):

Seam Up: Tongue
 Seam Dn: n/a

Wall Thickness: 11"
 Floor Height: 14"

Height (Int): 27"
 Height (Ext): 41"

Weight (Net): 28861 lb
 Volume (Net): 7.37cu.yd

Job Name: 25-3113 ADS Project Smash
 Job Location: Nashville, TN
 Contractor: ADS Advances Drainage Systems, Inc.

Plant: Beaver Dam
 11/10/2025 1:53:34 PM

Tech: J. Coppage
 PC: C. Goff



Structure ID: WQU-2

P1 MH120BVF

MH MONOBASE 14F, Custom Ht

- P7) 24" - CASTING HEIGHT - 7"
- P6) 120" - MH FLAT LID w/24in CON Hole - 18"
- P5) 120" - MH RISER NO STEPS - 66"
- P4) 120" - MH RISER NO STEPS - 96"
- P3) 120" - MH RISER NO STEPS - 96"
- P2) 120" - MH RISER NO STEPS - 24"
- P1) 120" - MH MONOBASE 14F, Custom Ht - 27"
- 1) ASSEMBLY REQUIRED
- 1) SECONDARY POUR
- 5) 120" - SGL 1"x14.5' Butyl (3x)
- 2) Hole - 40

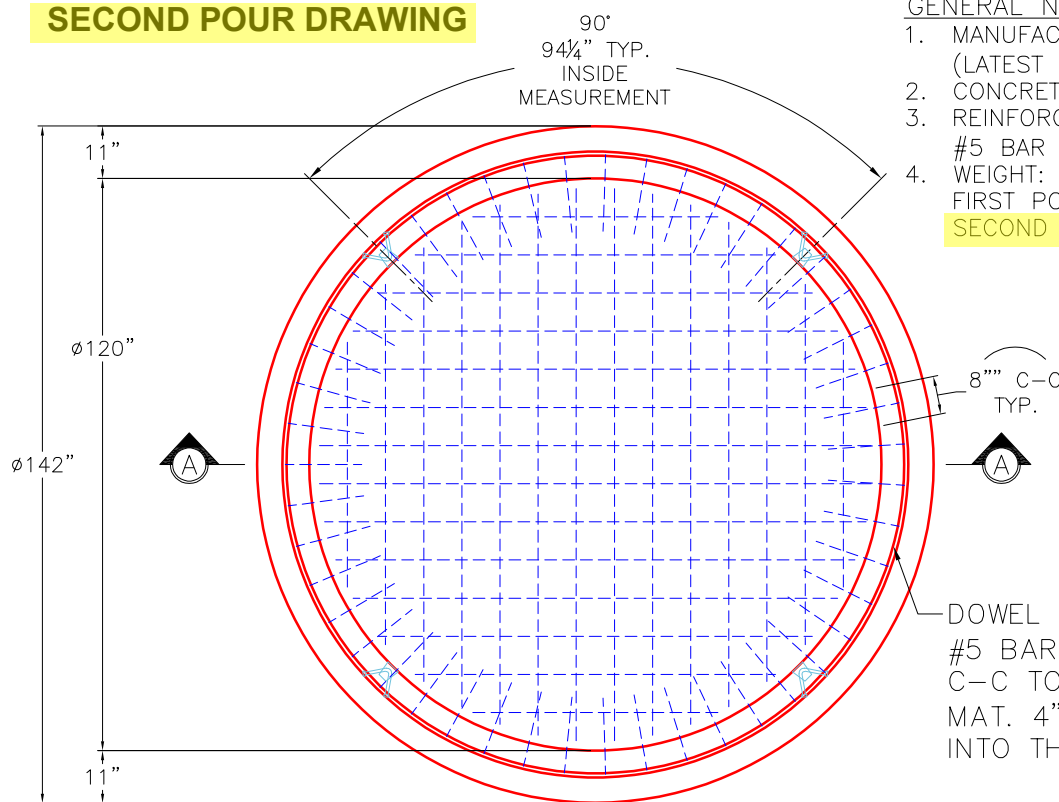
0 lb
 16678 lb
 25072 lb
 34109 lb
 36468 lb
 9117 lb
 28861 lb
 0 lb
 0 lb
 0 lb
 0 lb

 Structure Total: 150305 lb

- Structure Notes:**
1. JR HOE MC-375 STORM PROVIDED BY ICAST.
 2. PER ASTM C478 SPECIFICATIONS.
 3. CONCRETE = 4,000 PSI AT 28 DAYS.
 4. REINFORCING PER ASTM A615 (GRADE 60).
 - TOP SLAB (As .62) #5 BARS AT 6" C.C.E.W..
 - RISER/WALLS (As .36)
 5. LIFTING ANCHORS TO BE INSTALLED ON THE OUTSIDE OF THE STRUCTURE.
 6. INTERNAL COMPONENTS TO BE INSTALLED IN THE FIELD.

Rim: 564.87' Rim to Invert: 14.54' Slack: 2.48" Sump: 162" Step Position:

SECOND POUR DRAWING



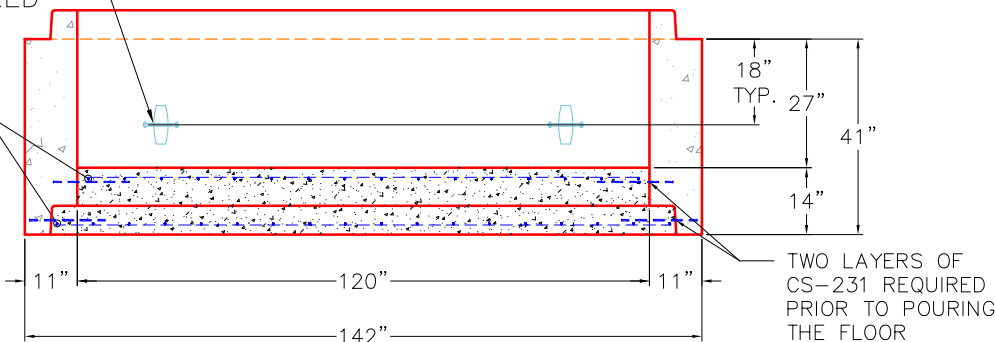
- GENERAL NOTES:**
1. MANUFACTURED TO ASTM C-478 (LATEST REVISION).
 2. CONCRETE 5,000 PSI AT 28 DAYS.
 3. REINFORCING: TOP AND BOTTOM MAT #5 BAR @ 8" C-C E.W. (GRADE 60).
 4. WEIGHT: 28,861 LBS TOTAL
 FIRST POUR: 15,575 LBS
 SECOND POUR: 13,286 LBS

DOWEL IN (94) 16" LONG #5 BAR (GRADE 60) 8" C-C TOP AND BOTTOM MAT. 4" MIN. PENETRATION INTO THE WALLS REQUIRED.

TOP VIEW

4 EA. CONAC 8CA18 ANCHORS REQUIRED FOR HANDLING.

#5 BAR @ 8" C/C E.W. TOP AND BOTTOM MAT



SECTION A-A

Coating (Int):
 Coating (Ext):

Seam Up: Tongue
 Seam Dn: n/a

Wall Thickness: 11"
 Floor Height: 14"

Height (Int): 27"
 Height (Ext): 41"

Weight (Net): 28861 lb
 Volume (Net): 7.37cu.yd