

Job Name: 25-3109 Heartland Meadows Ph.1
 Job Location: Dry Ridge, KY
 Contractor: Winsupply

Plant: Beaver Dam

11/19/2025 1:56:52 PM

Tech: C.Russ

PC: A.Chambers



Structure ID: STMH 9

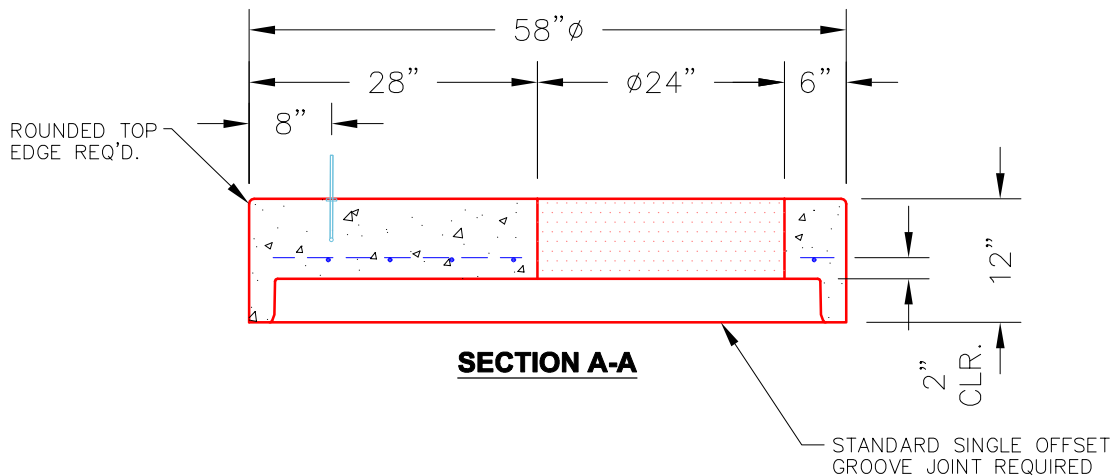
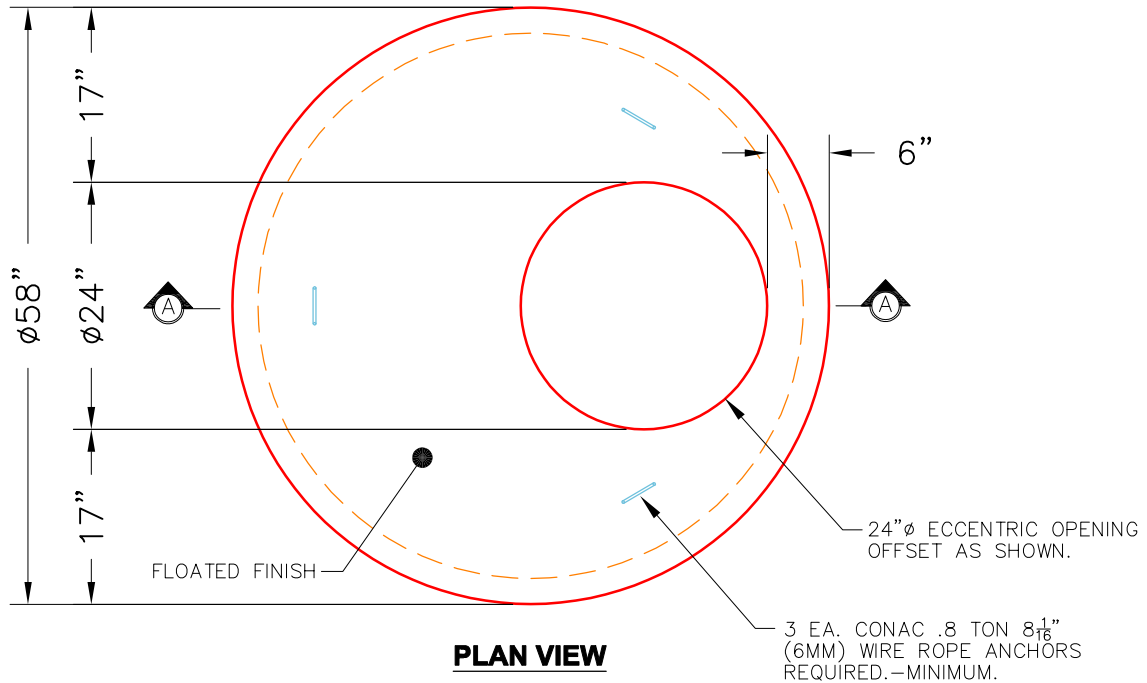
P2 MH048LD12ECC

MH FLAT TOP w/ 24" ECC Hole

- P4) 24" - CASTING HEIGHT - 7"
- P3) 24" - GRADE RING - 4"
- P2) 48" - MH FLAT TOP w/ 24" ECC Hole - 12"
- P1) 48" - MH BASE - 30"
- 1) 48" - SGL 1"x14.5' Butyl (2x)
- 3) Hole - 20
- 3) MH Step ML-10-TDS-NCR - 10"

- Structure Notes:**
1. PER ASTM C478 SPECIFICATIONS.
 2. CONCRETE = 4,000 PSI AT 28 DAYS.
 3. NO INVERT CHANNEL.
 4. REINFORCING PER ASTM A615 (GRADE 60).
 5. CASTING BY OTHERS.

Structure Total: 4851 lb



Coating (Int): Coating (Ext):	Seam Up: Flat Seam Dn: Groove	Wall Thickness: 5"	Height (Ext): 12"	Weight (Net): 1561 lb Volume (Net): 0.42cu.yd
----------------------------------	----------------------------------	--------------------	-------------------	--