

Job Name: 25-3109 Heartland Meadows Ph.1  
 Job Location: Dry Ridge, KY  
 Contractor: Winsupply

Plant: Beaver Dam  
 11/19/2025 2:16:06 PM

Tech: C.Russ  
 PC: A.Chambers



**Structure ID: STMH 9**

**P1 MH048BA30**

**MH BASE**

- P4) 24" - CASTING HEIGHT - 7"
- P3) 24" - GRADE RING - 4"
- P2) 48" - MH FLAT TOP w/ 24" ECC Hole - 12"
- P1) 48" - MH BASE - 30"
- 1) 48" - SGL 1"x14.5' Butyl (2x)
- 3) Hole - 20
- 3) MH Step ML-10-TDS-NCR - 10"

0 lb  
 270 lb  
 1561 lb  
 3020 lb  
 0 lb  
 0 lb  
 0 lb  
 -----  
 Structure Total: 4851 lb

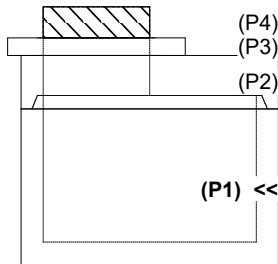
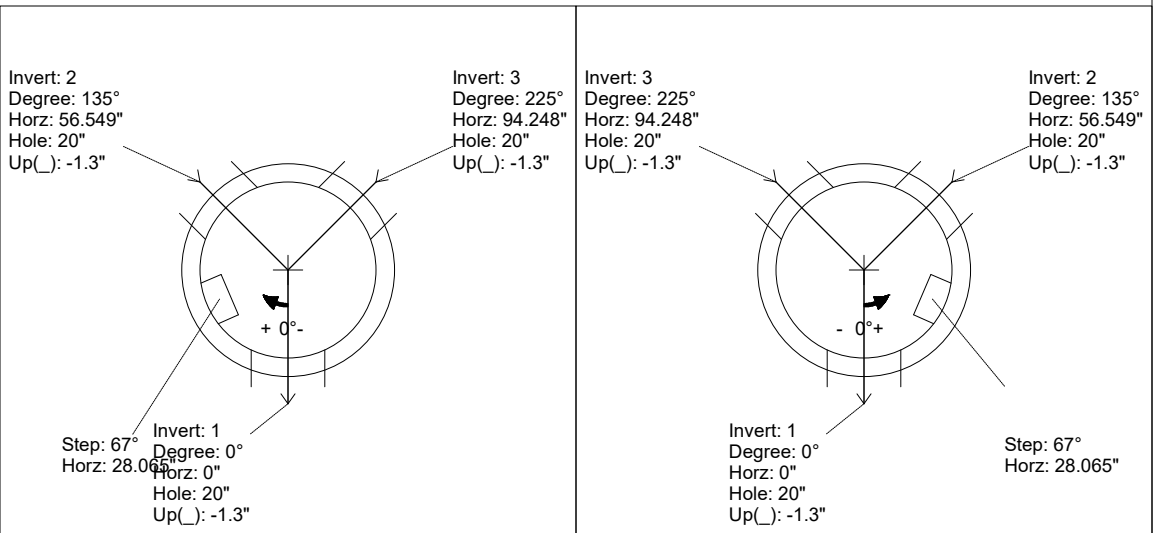
- Structure Notes:**
1. PER ASTM C478 SPECIFICATIONS.
  2. CONCRETE = 4,000 PSI AT 28 DAYS.
  3. NO INVERT CHANNEL.
  4. REINFORCING PER ASTM A615 (GRADE 60).
  5. CASTING BY OTHERS.

Rim: 919' Rim to Invert: 4.5' Slack: 1" Sump: 0" Step Position: 67

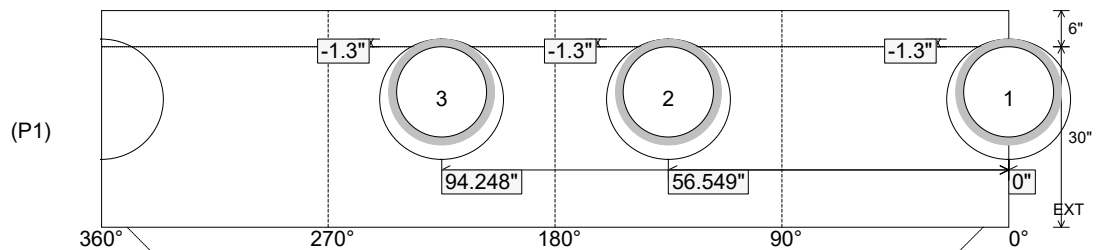
Position	Elev	Angle	Ext. (cw)	Pipe	Pipe OD	Connector	Hole	Horz Size	Up ( )	Offset
Invert 1	914.5'	0°	0"	15" HDPE	17.6"	Hole 20	20"	20.629"	-1.3"	0"
Invert 2	914.5'	135°	68.33"	15" HDPE	17.6"	Hole 20	20"	20.629"	-1.3"	0"
Invert 3	914.5'	225°	113.883"	15" HDPE	17.6"	Hole 20	20"	20.629"	-1.3"	0"
Invert 4										
Invert 5										
Invert 6										
Invert 7										
Invert 8										

RIGHT-SIDE UP VIEW (int. dimensions)

UPSIDE-DOWN VIEW (int. dimensions)



INSIDE WALL DIMENSIONS



Coating (Int):  
 Coating (Ext):

Seam Up: Tongue  
 Seam Dn: n/a

Wall Thickness: 5"  
 Floor Height: 6"

Height (Int): 30"  
 Height (Ext): 36"

Weight (Net): 3020 lb  
 Volume (Net): 0.77cu.yd