

Job Name: 25-3109 Heartland Meadows Ph.1  
 Job Location: Dry Ridge, KY  
 Contractor: Winsupply

Plant: Beaver Dam

11/19/2025 1:57:08 PM

Tech: C.Russ

PC: A.Chambers



**Structure ID: OCS 19**

**P2 BX363608R-VF**

**BOX RISER 8inW, Variable Ht**

- P3) 36" x 36" - CASTING HEIGHT - 0"
- P2) 36" x 36" - BOX RISER 8inW, Variable Ht - 44"
- P1) 36" x 36" - BOX BASE 8inW, 8inF, Variable Ht - 34"
- 2) 36" x 36" - SGL 1"x14.5' Butyl (2x)
- 1) Hole - 32
- 1) Horiz Slot - 24"x30"

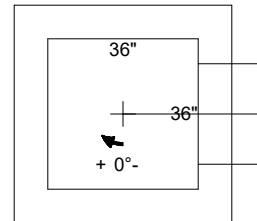
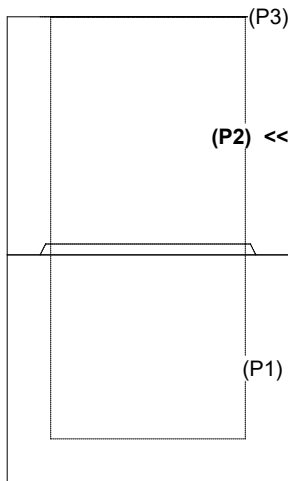
- 0 lb Structure Notes:  
 4715 lb 1. PER ASTM C913 SPECIFICATIONS.  
 5292 lb 2. CONCRETE = 4,000 PSI AT 28 DAYS.  
 0 lb 3. NO INVERT CHANNEL.  
 0 lb 4. TRASH RACK BY OTHERS  
 0 lb

Structure Total: 10008 lb  
 REINFORCING PER ASTM A615 (GRADE 60).  
 - WALLS (As .12) #5 BARS AT 12" C.C.E.W.  
 - FLOOR (As .12) #5 BARS AT 12" C.C.E.W.

Rim: 888' Rim to Invert: 6.5' Slack: -0.002" Sump: 0" Step Position: 180°

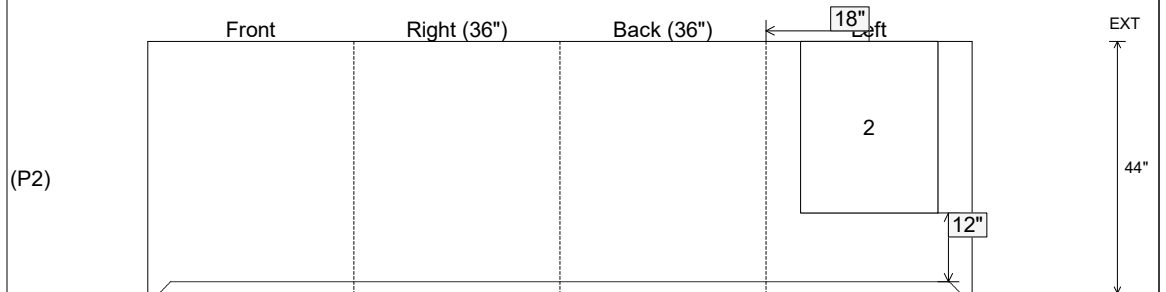
| Position | Elev   | Angle | Ext. (cw) | Pipe                 | Pipe OD   | Connector          | Hole      | Horz Size | Up ( ) | Offset |
|----------|--------|-------|-----------|----------------------|-----------|--------------------|-----------|-----------|--------|--------|
| Invert 1 |        |       |           |                      |           |                    |           |           |        |        |
| Invert 2 | 885.5' | 270°  | 26"       | 24" x 30" Horiz Slot | 24" x 30" | Horiz Slot 24"x30" | 24" x 30" | 24"       | 12"    | 0"     |
| Invert 3 |        |       |           |                      |           |                    |           |           |        |        |
| Invert 4 |        |       |           |                      |           |                    |           |           |        |        |
| Invert 5 |        |       |           |                      |           |                    |           |           |        |        |
| Invert 6 |        |       |           |                      |           |                    |           |           |        |        |
| Invert 7 |        |       |           |                      |           |                    |           |           |        |        |
| Invert 8 |        |       |           |                      |           |                    |           |           |        |        |

**RIGHT-SIDE UP VIEW (int. dimensions)**



Invert: 2  
 Degree: 270°  
 Horz: 18"  
 Hole: 24" x 30"  
 Up( ): 12"

**INSIDE WALL DIMENSIONS**



Coating (Int):  
 Coating (Ext):

Seam Up: Flat  
 Seam Dn: Groove

Wall Thickness: 8"  
 Floor Height: 0"

Height (Int): 44"  
 Height (Ext): 44"

Weight (Net): 4715 lb  
 Volume (Net): 1.2cu.yd