

Job Name: 25-3094 First Avenue Storm Sewer Replacement Project  
 Job Location: Evansville, IN  
 Contractor: Blankenberger Brothers, Inc.

Plant: 100

10/3/2025 9:36:38 AM

Tech: J. Harsley

PC: A. Chambers



**Structure ID: Str 6**

**P2 BX060060-08LD06-S**

**CB FLAT TOP 6"W w/30"x30" HOLE F/F**

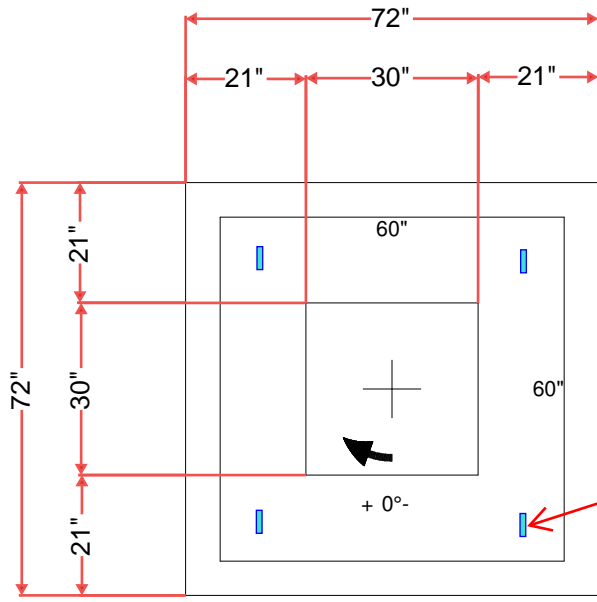
- P3) 30" x 30" - CASTING HEIGHT - 4"
- P2) 60" x 60" - CB FLAT TOP 6"W w/30"x30" HOLE F/F - 8"
- P1) 60" x 60" - BOX BASE 6inW, 6inF, Variable Ht F/n - 58"
- 1) CASTING - HOE 468 F/G
- 1) 60" x 60" - Conseal CS-102 1.00"
- 1) 30" x 30" - Conseal CS-102 1.00"
- 2) Hole - 48

0 lb  
 2878 lb  
 8497 lb  
 489 lb  
 0 lb  
 0 lb  
 0 lb  
 -----  
 Structure Total: 11864 lb

Structure Notes:

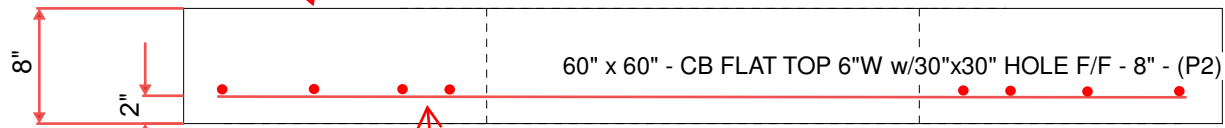
1. PER ASTM C913 SPECIFICATIONS.
2. CONCRETE = 4,000 PSI AT 28 DAYS.
3. NO INVERT CHANNEL.
4. CASTING BY ICAST (HOE 468 F/G).

REINFORCING PER ASTM A615 (GRADE 60).  
 - TOP SLAB (As .62) #5 BARS AT 6" C.C.E.W.  
 - WALLS (As 31) #5 BARS AT 12" C.C.E.W.  
 - FLOOR (As 31) #5 BARS AT 12" C.C.E.W.



4 EA. CONAC WRA016 WIRE LOOP LIFTERS IN 14" FROM EACH SIDE

SMOOTH FINISH ON TOP SURFACE



(2) #5 BARS AT 3" C/C EACH SIDE OF HOLE TYP. SPACING = #5 BARS AT 6" C.C.E.W.

Coating (Int): Coating (Ext):	Seam Up: Flat Seam Dn: Flat	Wall Thickness: 6"	Height (Ext): 8"	Weight (Net): 2878 lb Volume (Net): 0.74cu.yd
----------------------------------	--------------------------------	--------------------	------------------	--