

Job Name: 25-3094 First Avenue Storm Sewer Replacement Project
 Job Location: Evansville, IN
 Contractor: Blankenberger Brothers, Inc.

Plant: 100

10/3/2025 7:46:21 AM

Tech: J. Harsley

PC: A. Chambers



Structure ID: Str 4

P2 BX060060-08LD06-S

CB FLAT TOP 6"W w/30"x30" HOLE F/F

- P3) 30" x 30" - CASTING HEIGHT - 4"
- P2) 60" x 60" - CB FLAT TOP 6"W w/30"x30" HOLE F/F - 8"
- P1) 60" x 60" - BOX BASE 6inW, 6inF, Variable Ht F/n - 55"
- 1) CASTING - HOE 468 F/G
- 1) 60" x 60" - Conseal CS-102 1.00"
- 1) 30" x 30" - Conseal CS-102 1.00"
- 2) Hole - 48

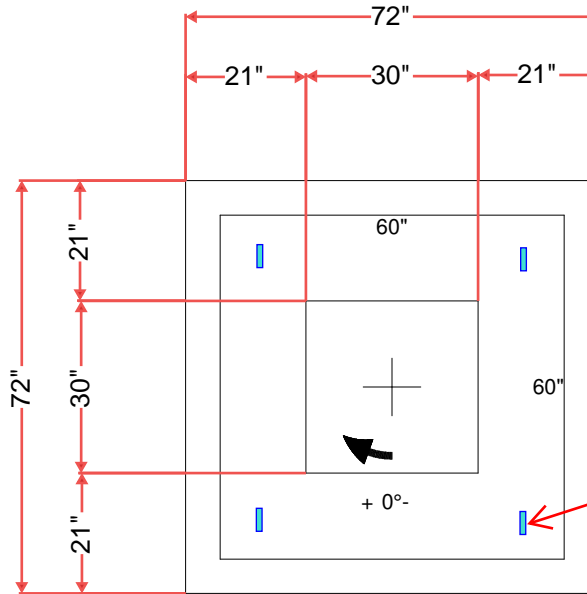
0 lb
 2878 lb
 8098 lb
 489 lb
 0 lb
 0 lb
 0 lb

 Structure Total: 11465 lb

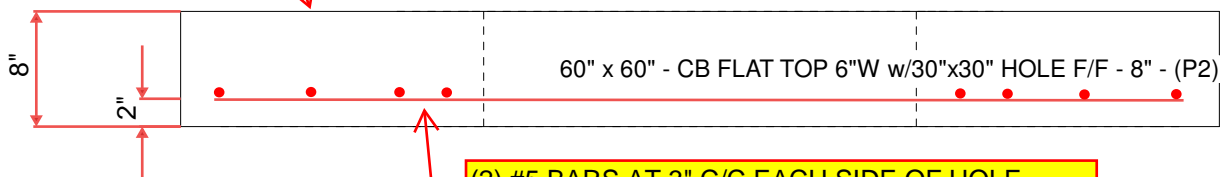
Structure Notes:

1. PER ASTM C913 SPECIFICATIONS.
2. CONCRETE = 4,000 PSI AT 28 DAYS.
3. NO INVERT CHANNEL.
4. CASTING BY ICAST (HOE 468 F/G).

REINFORCING PER ASTM A615 (GRADE 60).
 - TOP SLAB (As .62) #5 BARS AT 6" C.C.E.W.
 - WALLS (As 31) #5 BARS AT 12" C.C.E.W.
 - FLOOR (As 31) #5 BARS AT 12" C.C.E.W.



SMOOTH FINISH ON TOP SURFACE



Coating (Int):
 Coating (Ext):

Seam Up: Flat
 Seam Dn: Flat

Wall Thickness: 6"

Height (Ext): 8"

Weight (Net): 2878 lb
 Volume (Net): 0.74cu.yd