

Job Name: 25-3094 First Avenue Storm Sewer Replacement Project
 Job Location: Evansville, IN
 Contractor: Blankenberger Brothers, Inc.

Plant: 100
 10/3/2025 7:45:45 AM

Tech: J. Harsley
 PC: A. Chambers



Structure ID: Str 2

P2 BX060060-06LD06-S

CB FLAT TOP 6"W w/30"x30" HOLE F/F

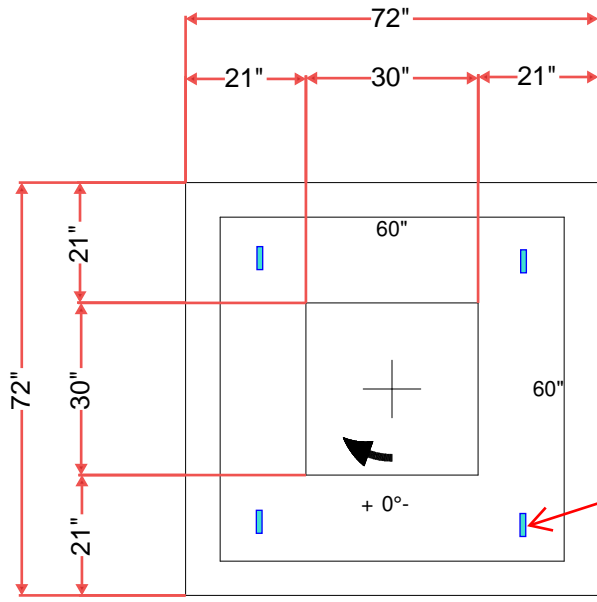
- P3) 30" x 30" - CASTING HEIGHT - 4"
- P2) 60" x 60" - CB FLAT TOP 6"W w/30"x30" HOLE F/F - 6"
- P1) 60" x 60" - BOX BASE 6inW, 6inF, Variable Ht F/n - 48"
- 1) CASTING - HOE 468 F/G
- 1) 60" x 60" - Conseal CS-102 1.00"
- 1) 30" x 30" - Conseal CS-102 1.00"
- 1) DOGHOUSE INVRTD - 48"x47"
- 1) DOGHOUSE INVRTD - 48"x45.50"

0 lb
 2100 lb
 6968 lb
 489 lb
 0 lb
 0 lb
 0 lb
 0 lb
 0 lb

 Structure Total: 9557 lb

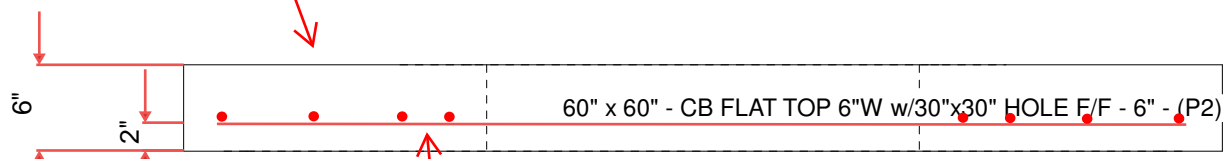
Structure Notes:
 1. PER ASTM C913 SPECIFICATIONS.
 2. CONCRETE = 4,000 PSI AT 28 DAYS.
 3. NO INVERT CHANNEL.
 4. CASTING BY ICAST (HOE 468 F/G).

 REINFORCING PER ASTM A615 (GRADE 60).
 - TOP SLAB (As .62) #5 BARS AT 6" C.C.E.W.
 - WALLS (As 31) #5 BARS AT 12" C.C.E.W.
 - FLOOR (As 31) #5 BARS AT 12" C.C.E.W.



4 EA. CONAC WRA016
 WIRE LOOP LIFTERS
 IN 14" FROM EACH SIDE

SMOOTH FINISH
 ON TOP SURFACE



(2) #5 BARS AT 3" C/C EACH SIDE OF HOLE
 TYP. SPACING = #5 BARS AT 6" C.C.E.W.

Coating (Int): Coating (Ext):	Seam Up: Flat Seam Dn: Flat	Wall Thickness: 6"	Height (Ext): 6"	Weight (Net): 2100 lb Volume (Net): 0.52cu.yd
----------------------------------	--------------------------------	--------------------	------------------	--