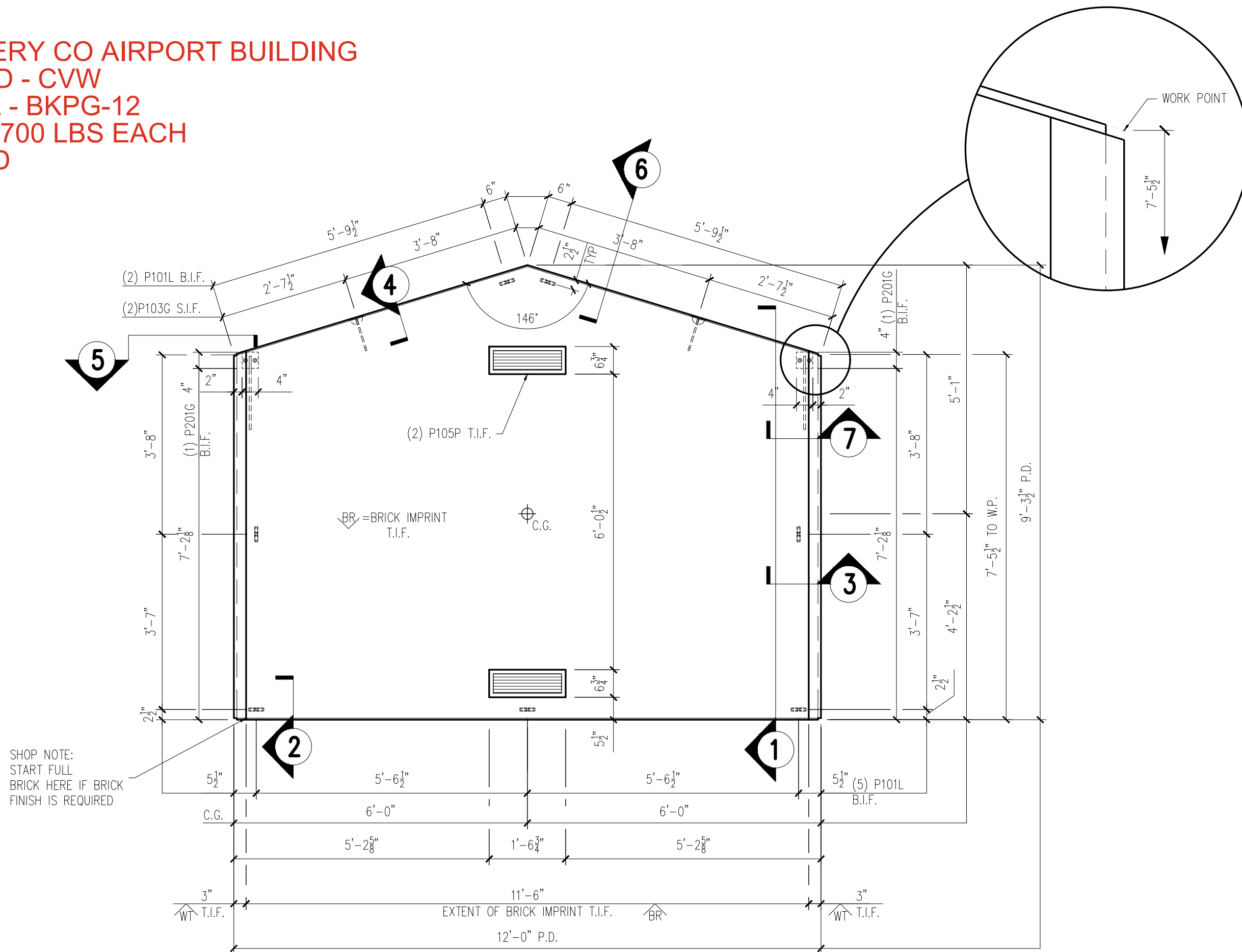
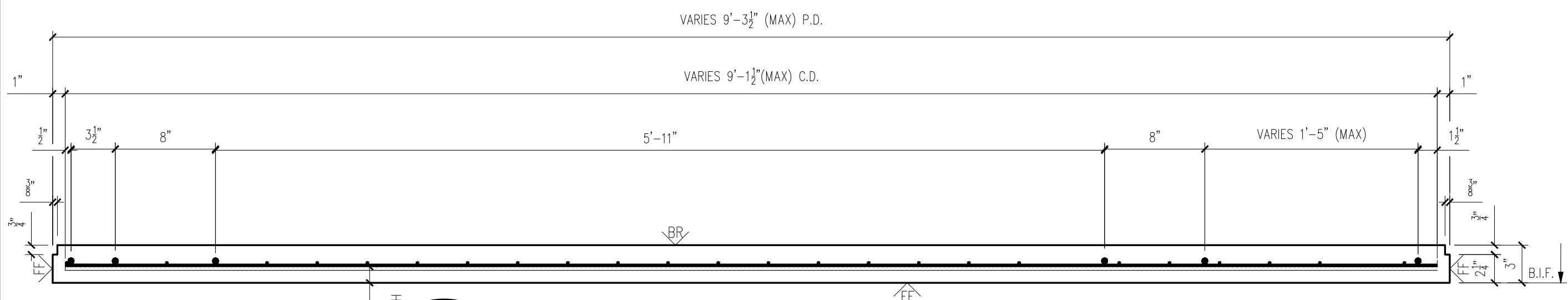


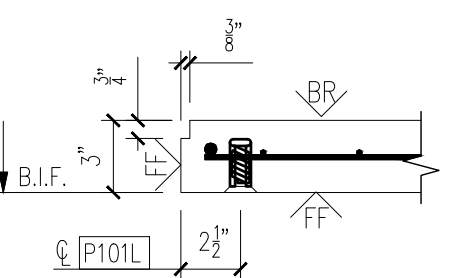
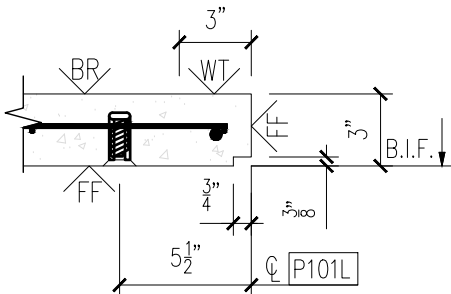
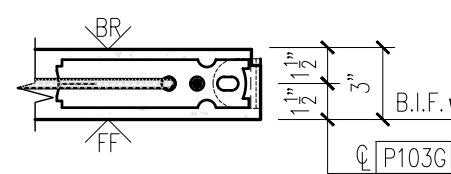
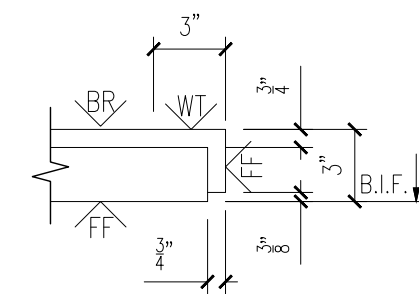
25-3077
 MONTGOMERY CO AIRPORT BUILDING
 PRODUCT ID - CVW
 REAR WALL - BKPG-12
 WEIGHT - 3,700 LBS EACH
 1 REQUIRED



BACK WALL FORM VIEW
 SCALE: 1/2" = 1'-0"



NOTE: ADJUST CLEARANCE (CLR.) AS REQUIRED FOR DIFFERENT FINISHES TO MAINTAIN ADEQUATE CONCRETE COVER ON TOP AND BOTTOM OF REBAR MAT



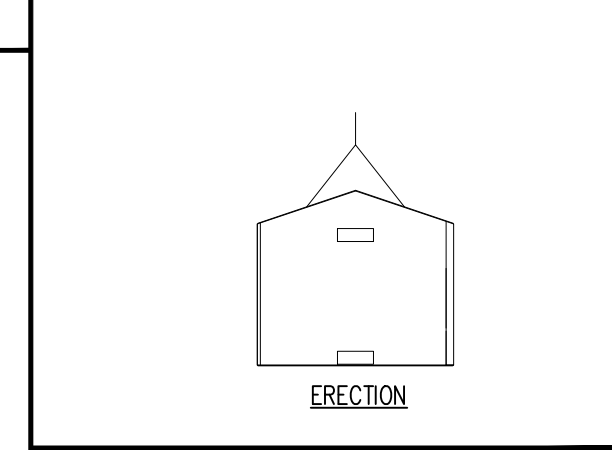
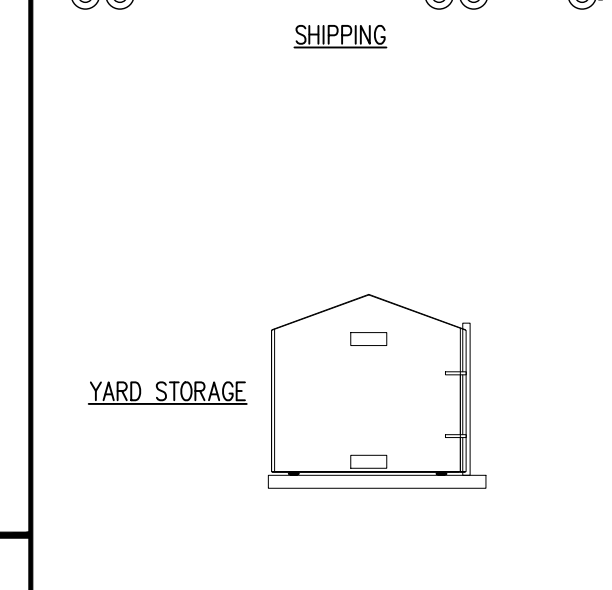
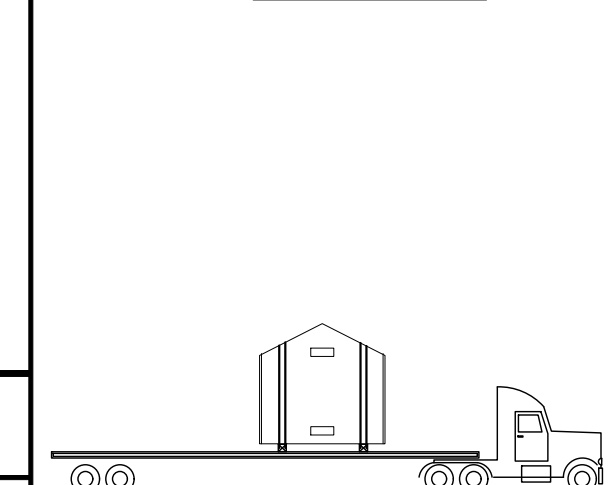
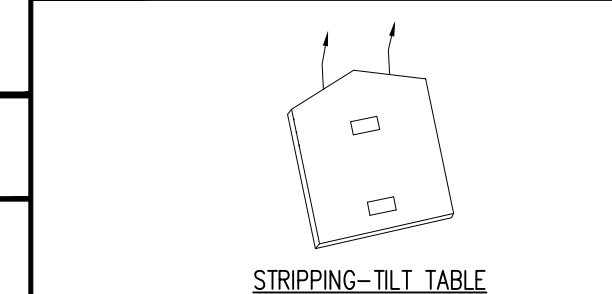
MESSAGE CENTER

- REFER TO DETAILS AND SECTION FOR REINFORCEMENT PLACEMENT
- SHOP TICKET SHOWS EXTERIOR FINISH CAST FACE UP

CHECKED BY: DATE:
 APPROVED BY: DATE:

BILL OF MATERIALS		
MARK #	DESCRIPTION	QTY
P101L	1/2" Ø X 1 1/2" F-63 FLARED THIN SLAB COIL INSERT (ELECTROPLATED)	7
P201G	4" X 4" X 3/8" W/(2) 1/2" Ø X 1 1/2" H.A.S. W/ 1'-4" BENT REBAR (GALV.)	2
P103G	2 TON TECH ERECTION ANCHOR (GALV.)	2
P105P	4 1/2" X 1'-4 1/2" FL-164 VENT SUN VENT INDUSTRIES (ALUMINUM)	2

HANDLING INSTRUCTIONS



CONCRETE INSTRUCTIONS	
CONCRETE RELEASE @	2,000 P.S.I.
CONCRETE @ 28 DAYS:	5,000 P.S.I.
CONCRETE MIXES	
CONCRETE - GRAY	VOLUME = 0.91 C.Y.
CONCRETE - MIX 1	VOLUME = - C.Y.
CONCRETE - MIX 2	VOLUME = - C.Y.
SOFT SOUND	VOLUME = - C.Y.
TOTALS	VOLUME = 0.91 C.Y.
WEIGHT:	3,700 LBS.

FINISHING INSTRUCTIONS

BR = BRICK IMPRINT	
FF = FORM FINISH	
WT = WET TROWEL FINISH	
9'-3 1/2"	SQ.FT.(T.I.F.) = 100.0
W = 12'-0"	SQ.FT.(T.I.F.) = -
D = 3"	SQ.FT.(T.I.F.) = -
CONTROL NUMBERS:	
-	-

PRODUCT	SALES ORDER NUMBER
BUILDING	STANDARD
SHEET NUMBER	NUMBER REQUIRED
1 OF 2	1

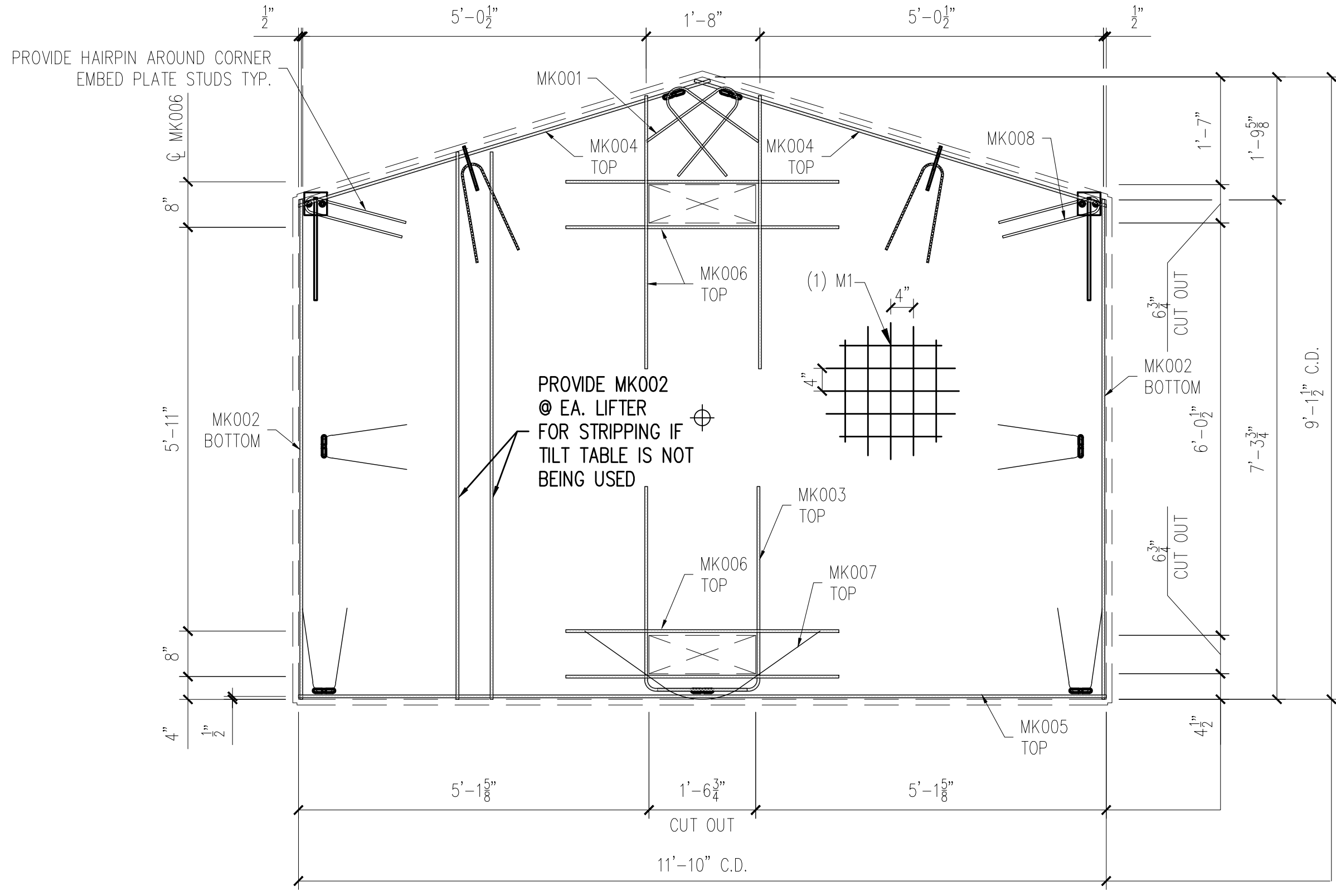
EASI-SET® WORLDWIDE
 5119 Cattlett Rd. • Midland, VA 22728 • info@EasiSet.com
 www.EasiSet.com • 800-547-4045 • Fax 540-439-2541

REV	INI.	DESCRIPTION	DATE
1	-	-	-
2	-	-	-
3	-	-	-
4	-	-	-
5	-	-	-

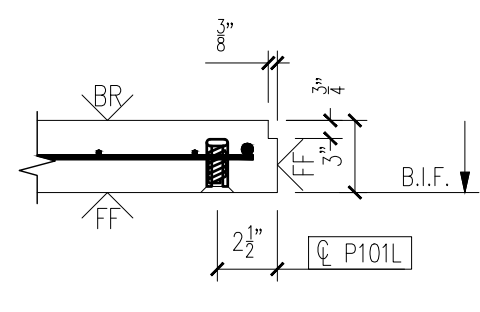
PROJECT: STANDARD 10' GABLED FLOOR 10X12 GABLED BUILDING
 CONTRACTOR: INFRASTRUCTURE PRECAST

SCALE	NTS
DRAWN BY	WCR
CHECK BY	JAD
ISSUE DATE	10.15.25
PIECE MARK	BKPG-12

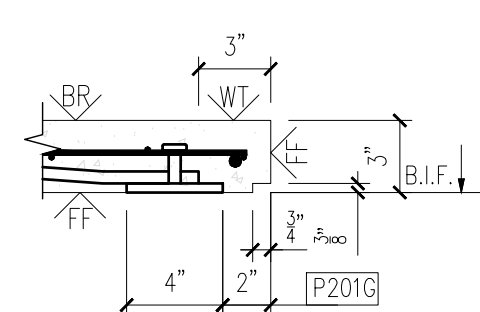
25-3077
 MONTGOMERY CO AIRPORT BUILDING
 PRODUCT ID - CVW
 REAR WALL - BKPG-12
 WEIGHT - 3,700 LBS EACH
 1 REQUIRED



BACK WALL REINFORCING
 SCALE: 1/2" = 1'-0"



6



7

MESSAGE CENTER

- REFER TO DETAILS AND SECTION FOR REINFORCEMENT PLACEMENT
- SUPPLEMENTAL STEEL FOR STRIPPING AND HANDLING MAY BE ADDED AS REQUIRED.

CHECKED BY: DATE:
 APPROVED BY: DATE:

NOTE:
 1. CONSTRUCT REBAR-MESH CAGE ACCORDING TO THE DRAWINGS. SECURE LIFTING APPARATUS TO FORM AND ADD PROPER REINFORCEMENT. PLACE REBAR-MESH CAGE AND HAIRPINS AT INSERTS WITH PROPER CLEARANCES (PER DRAWINGS).

PRODUCT BUILDING	SALES ORDER NUMBER STANDARD
SHEET NUMBER 2 OF 2	NUMBER REQUIRED 1

REINFORCING SCHEDULE		
MARK #	DESCRIPTION	QTY
MK001	#3 X 3'-0"	8
MK002	#3 X 7'-3 3/4"	2
MK003	#3 X 4'-4 1/2"	2
MK004	#3 X 6'-2"	2
MK005	#3 X 11'-10"	1
MK006	#3 X 4'-0"	6
MK007	#3 X 4'-0"	1
MK008	#3 X 3'-1"	2

MESH SCHEDULE		
MARK #	DESCRIPTION	QTY
M1	W4XW4 4"X4" WWF 11'-10" X 9'-1 1/2"	1

REV	INI	DATE	DESCRIPTION
1			
2			
3			
4			
5			

PROJECT: STANDARD 10' GABLED FLOOR
 10X12 GABLED BUILDING
 CONTRACTOR: INFRASTRUCTURE PRECAST

SCALE NTS
DRAWN BY WCR
CHECK BY JAD
ISSUE DATE 10.15.25
PIECE MARK BKPG-12

EASI-SET® WORLDWIDE
 5119 Callett Rd. • Midland, VA 22728 • info@EasiSet.com
 www.EasiSet.com • 800-547-4045 • Fax 540-439-2541