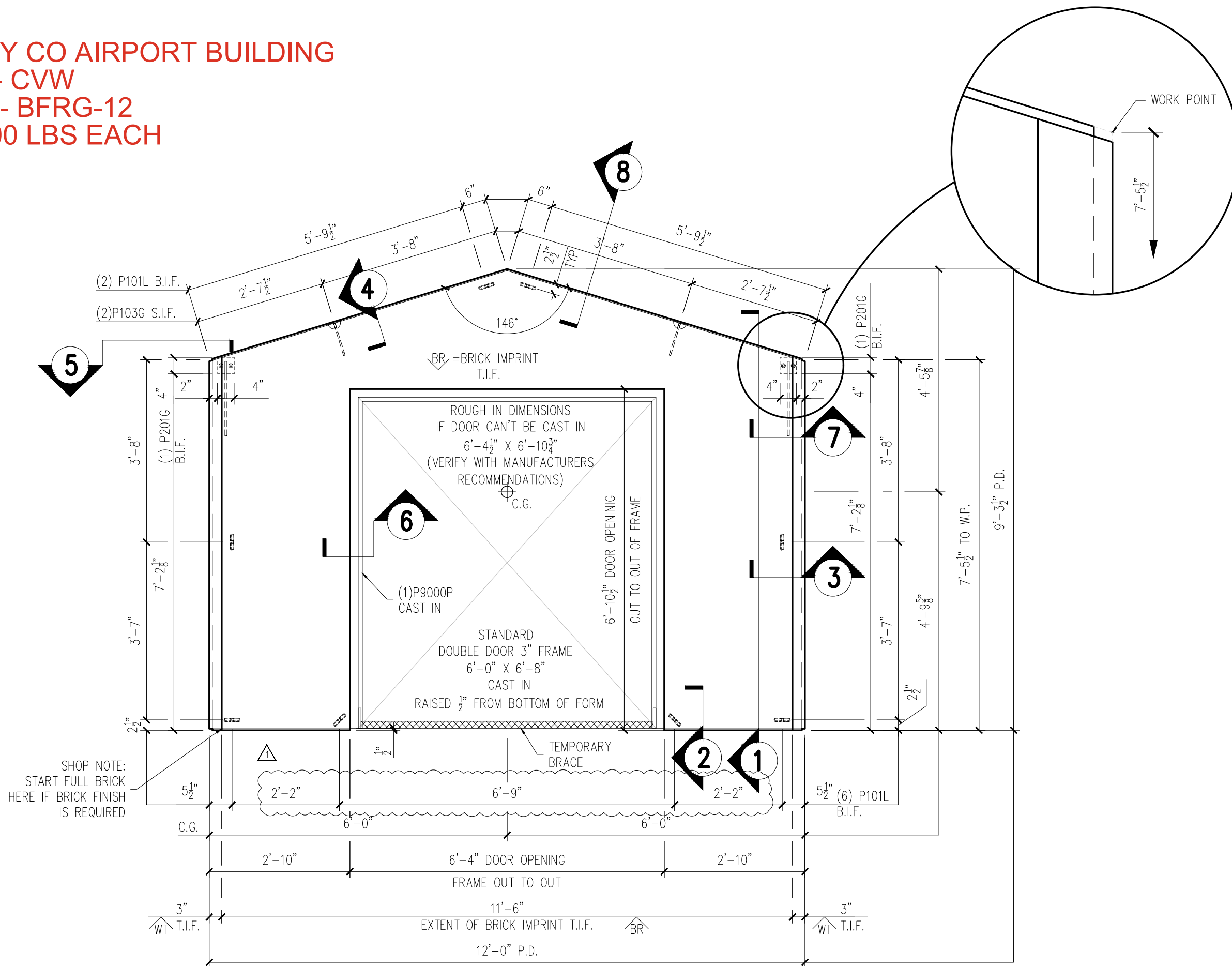
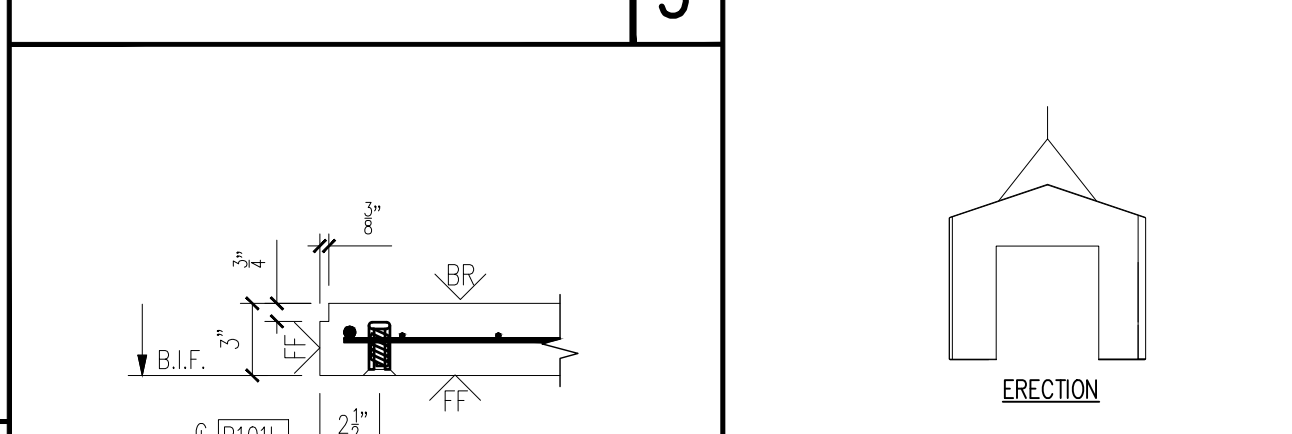
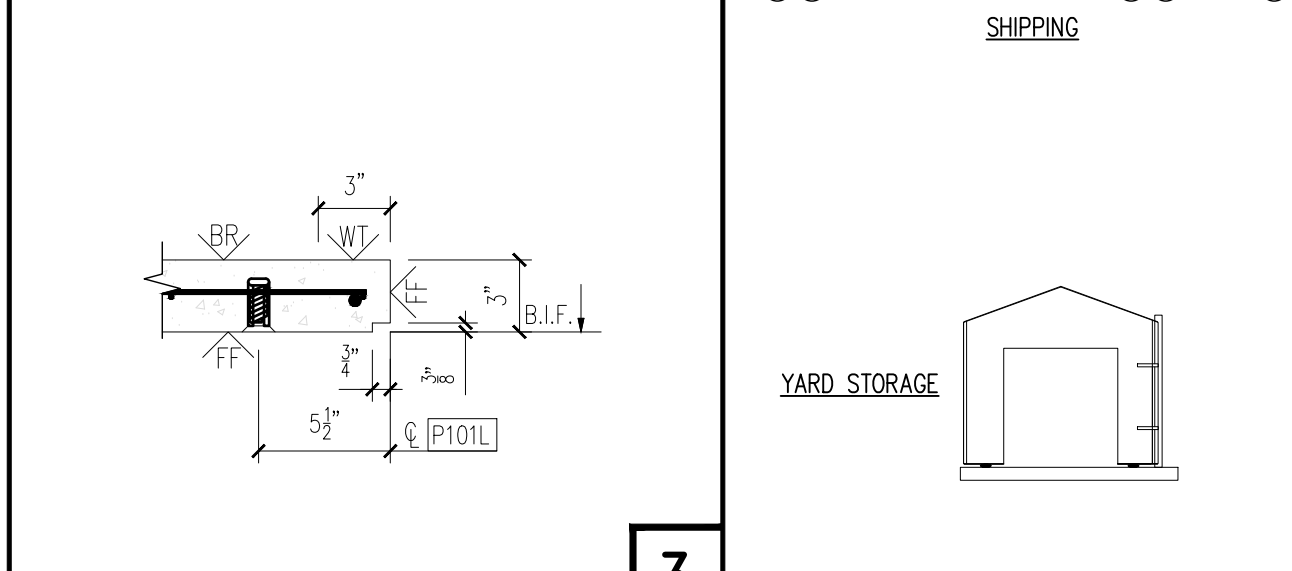
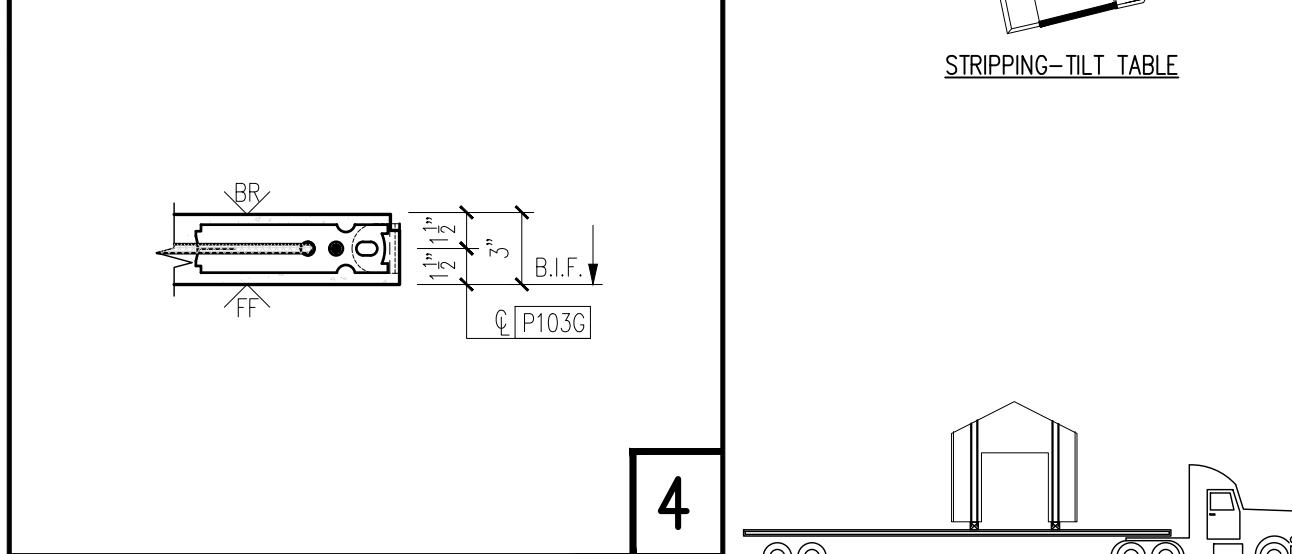
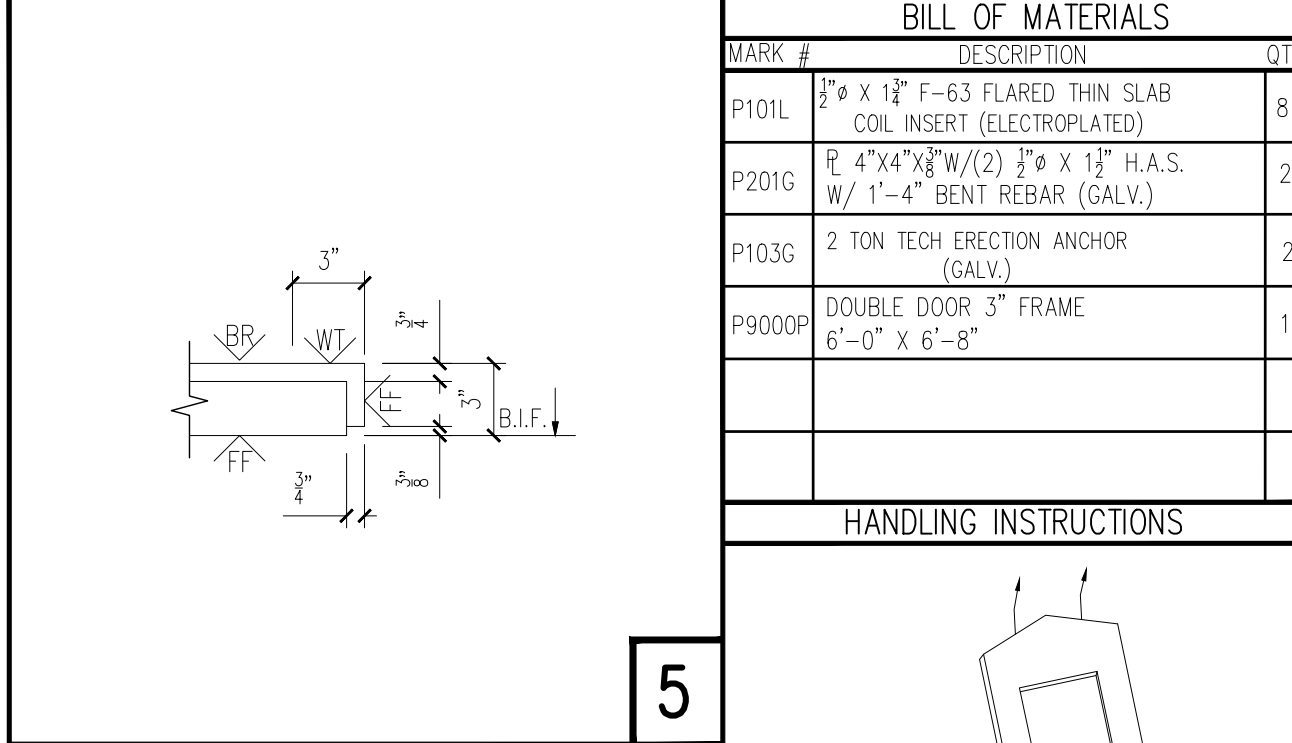
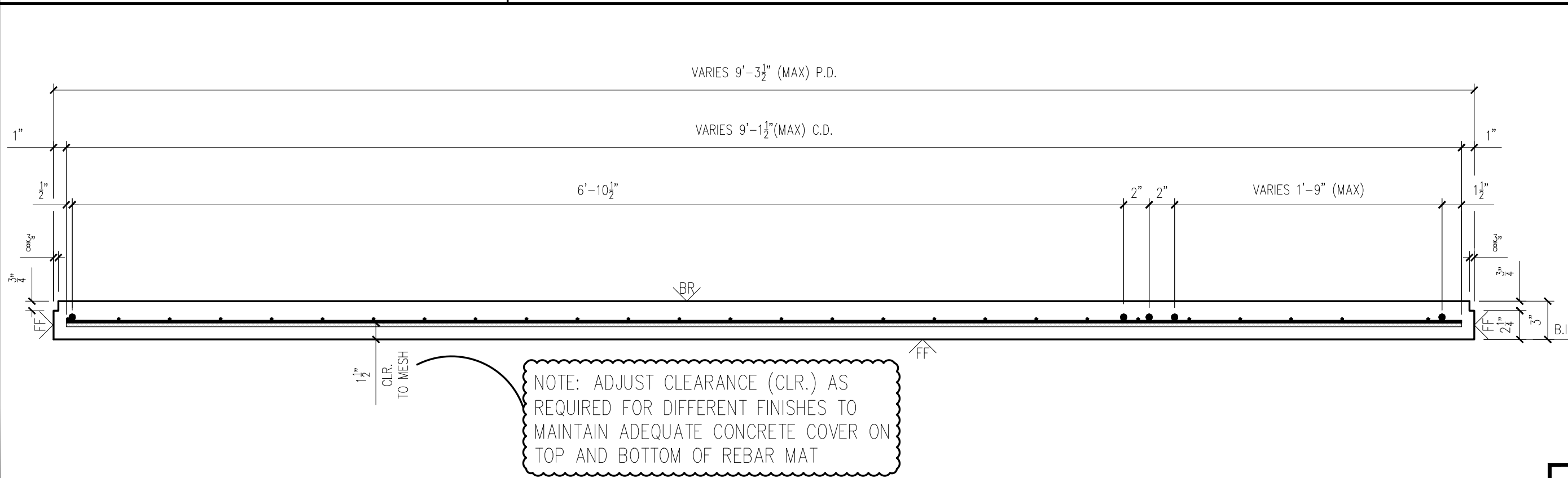


25-3077
MONTGOMERY CO AIRPORT BUILDING
PRODUCT ID - CVW
FRONT WALL - BFRG-12
WEIGHT - 2,200 LBS EACH
1 REQUIRED



NOTES:
 1. PROTECT FRAME DURING CASTING W/TAPE OR PROTECTIVE COVERING
 2. DOUBLE DOOR SHOWN-TEMPORARY BRACE MADE FROM PIPE/REBAR WITH TABS WELDED AT EACH END FOR BOLTING TO DOOR FRAME BY PLACING PLASTIC INSERTS ON INSIDE OF FRAME CHANNEL.



MESSAGE CENTER

1. REFER TO DETAILS AND SECTION FOR REINFORCEMENT PLACEMENT

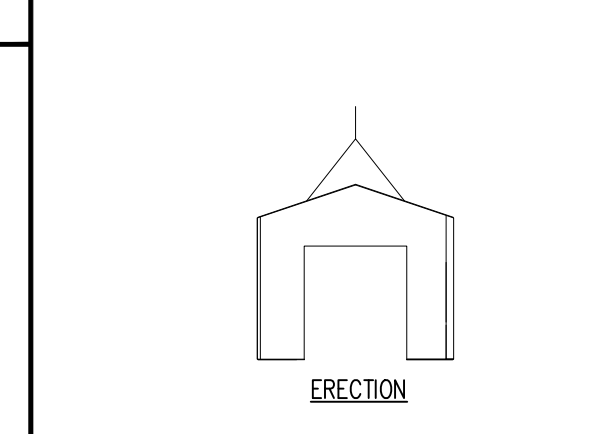
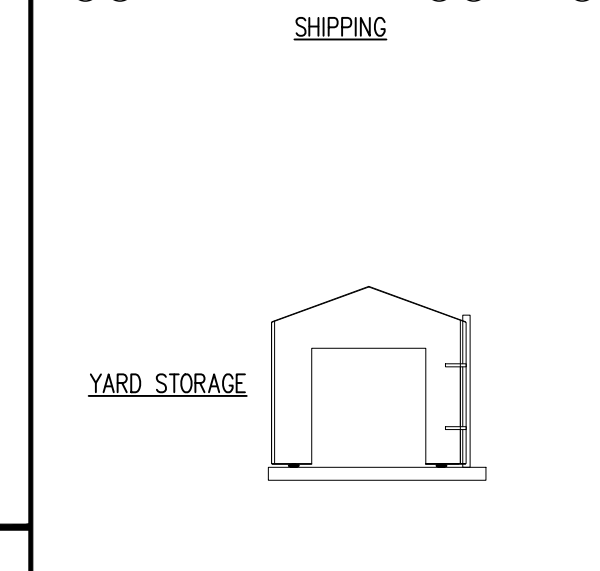
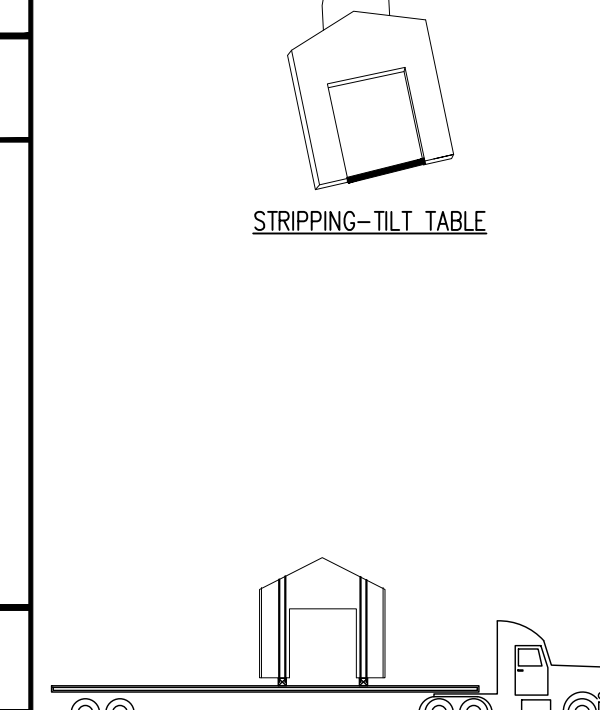
2. SHOP TICKET SHOWS EXTERIOR FINISH CAST FACE UP

CHECKED BY: DATE: APPROVED BY: DATE:

BILL OF MATERIALS

MARK #	DESCRIPTION	QTY
P101L	1/2" Ø X 12" F-63 FLARED THIN SLAB COIL INSERT (ELECTROPLATED)	8
P201G	4" X 4" X 3/8" W / (2) 1/2" Ø X 1 1/2" H.A.S. W / 1'-4" BENT REBAR (GALV.)	2
P103G	2 TON TECH ERECTION ANCHOR (GALV.)	2
P9000P	DOUBLE DOOR 3" FRAME 6'-0" X 6'-8"	1

HANDLING INSTRUCTIONS



CONCRETE INSTRUCTIONS

CONCRETE RELEASE @ 2,000 P.S.I.

CONCRETE @ 28 DAYS: 5,000 P.S.I.

CONCRETE MIXES

MIX	VOLUME	UNIT
CONCRETE - GRAY	0.54	C.Y.
CONCRETE - MIX 1	-	C.Y.
CONCRETE - MIX 2	-	C.Y.
SOFT SOUND	-	C.Y.
TOTALS	0.54	C.Y.

WEIGHT: 2,200 LBS.

FINISHING INSTRUCTIONS

BR = BRICK IMPRINT
 FF = FORM FINISH
 WT = WET TROWEL FINISH

FINISH	SQ.FT.(T.I.F.)
H = 9'-3 1/2"	57.0
W = 12'-0"	-
D = 3"	-

CONTROL NUMBERS:

PRODUCT
 BUILDING

SALES ORDER NUMBER
 STANDARD

SHEET NUMBER
 1 OF 2

EASI-SET WORLDWIDE

5119 Cattle Rd. • Midland, VA 22728 • info@EasiSet.com
 www.EasiSet.com • 800-547-4045 • Fax 540-439-2541

REV	INI.	DESCRIPTION	DATE
1	WCR	ADJUSTED CONNECTION INSERTS AT BASE	11.03.25
2			
3			
4			

PROJECT: STANDARD 12' GABLE WALL
 10X12 GABLE BUILDING

CONTRACTOR: INFRASTRUCTURE PRECAST

SCALE: NTS

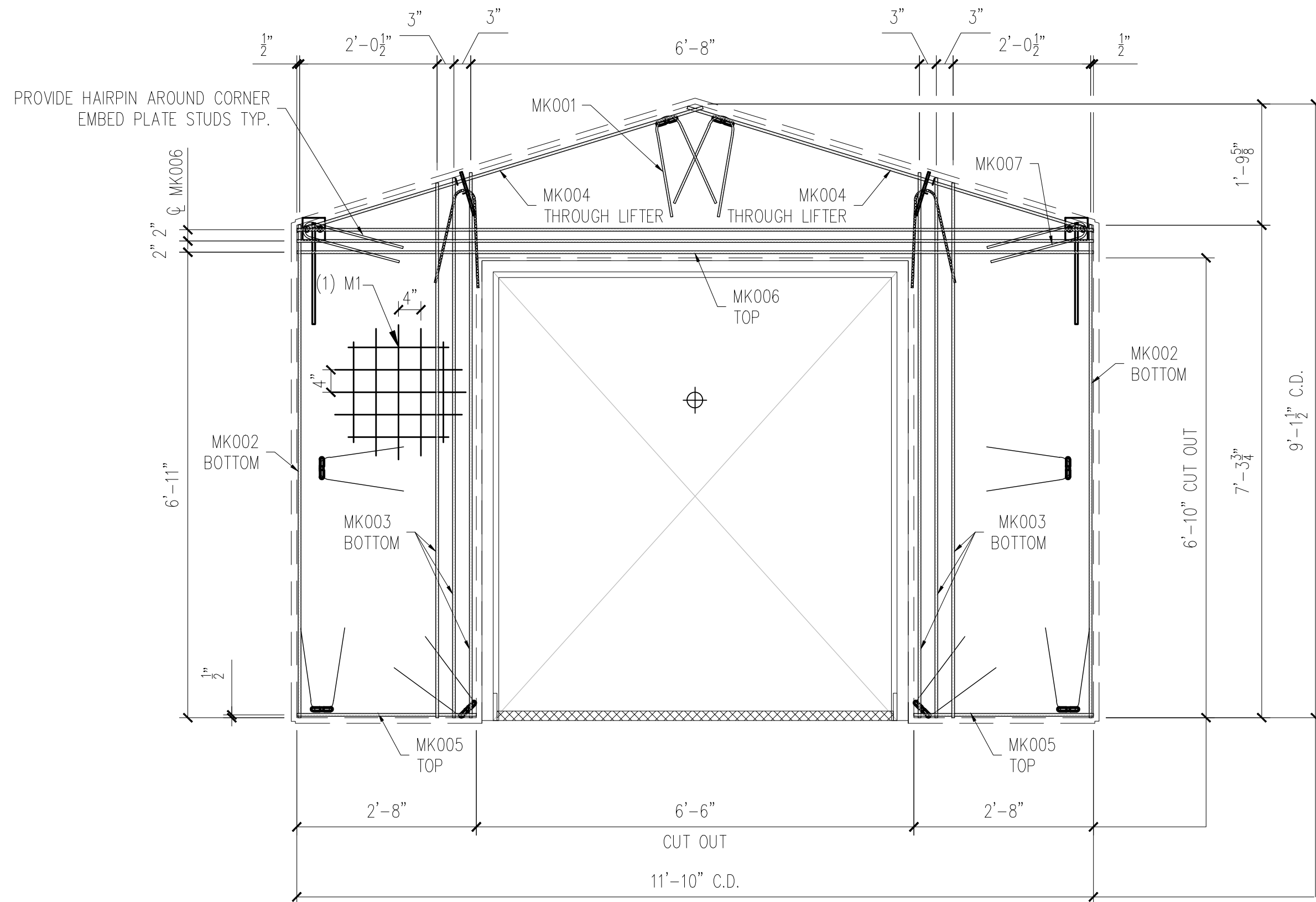
DRAWN BY: WCR

CHECK BY: JAD

ISSUE DATE: 10.15.25

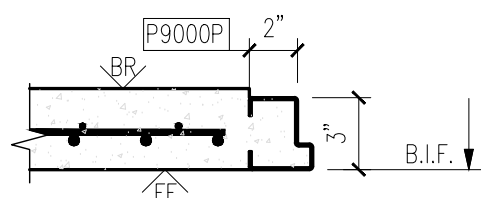
PIECE MARK: BFRG-12

25-3077
 MONTGOMERY CO AIRPORT BUILDING
 PRODUCT ID - CVW
 FRONT WALL - BFRG-12
 WEIGHT - 2,200 LBS EACH
 1 REQUIRED

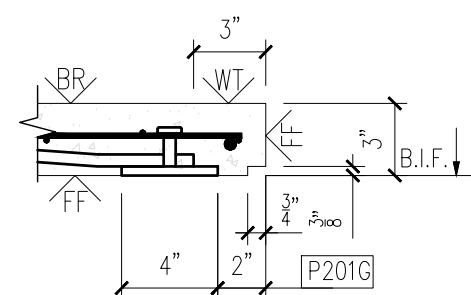


FRONT WALL REINFORCING

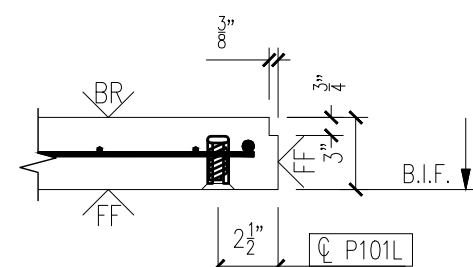
SCALE: 1/2" = 1'-0"



6



7



8

MESSAGE CENTER

- REFER TO DETAILS AND SECTION FOR REINFORCEMENT PLACEMENT
- SUPPLEMENTAL STEEL FOR STRIPPING AND HANDLING MAY BE ADDED AS REQUIRED.

CHECKED BY: DATE:
 APPROVED BY: DATE:

NOTE:
 1. CONSTRUCT REBAR-MESH CAGE ACCORDING TO THE DRAWINGS. SECURE LIFTING APPARATUS TO FORM AND ADD PROPER REINFORCEMENT. PLACE REBAR-MESH CAGE AND HAIRPINS AT INSERTS WITH PROPER CLEARANCES (PER DRAWINGS).

PRODUCT BUILDING	SALES ORDER NUMBER STANDARD
SHEET NUMBER 2 OF 2	NUMBER REQUIRED 1

REINFORCING SCHEDULE		
MARK #	DESCRIPTION	QTY
MK001	#3 X 3'-0"	10
MK002	#3 X 7'-3 3/4"	2
MK003	#3 X 8'-0"	6
MK004	#3 X 6'-2"	2
MK005	#3 X 2'-8"	2
MK006	#3 X 11'-10"	3
MK007	#3 X 3'-1"	2

MESH SCHEDULE		
MARK #	DESCRIPTION	QTY
M1	W4XW4 4"X4" WWF 11'-10" X 9'-1 1/2"	1

REV	INI	DATE	DESCRIPTION
1			
2			
3			
4			
5			

PROJECT: STANDARD 12' GABLED WALL
 10X12 GABLED BUILDING
 CONTRACTOR: INFRASTRUCTURE PRECAST

SCALE NTS
DRAWN BY WCR
CHECK BY JAD
ISSUE DATE 10.15.25
PIECE MARK BFRG-12

EASI-SET® WORLDWIDE
 5119 Callett Rd. • Midland, VA 22728 • info@EasiSet.com
 www.EasiSet.com • 800-547-4045 • Fax 540-439-2541